

# Alteia

R2022.35

R2022.35- Deployment on August 30th, 2022

Knowledge base publication

Alteia 2022

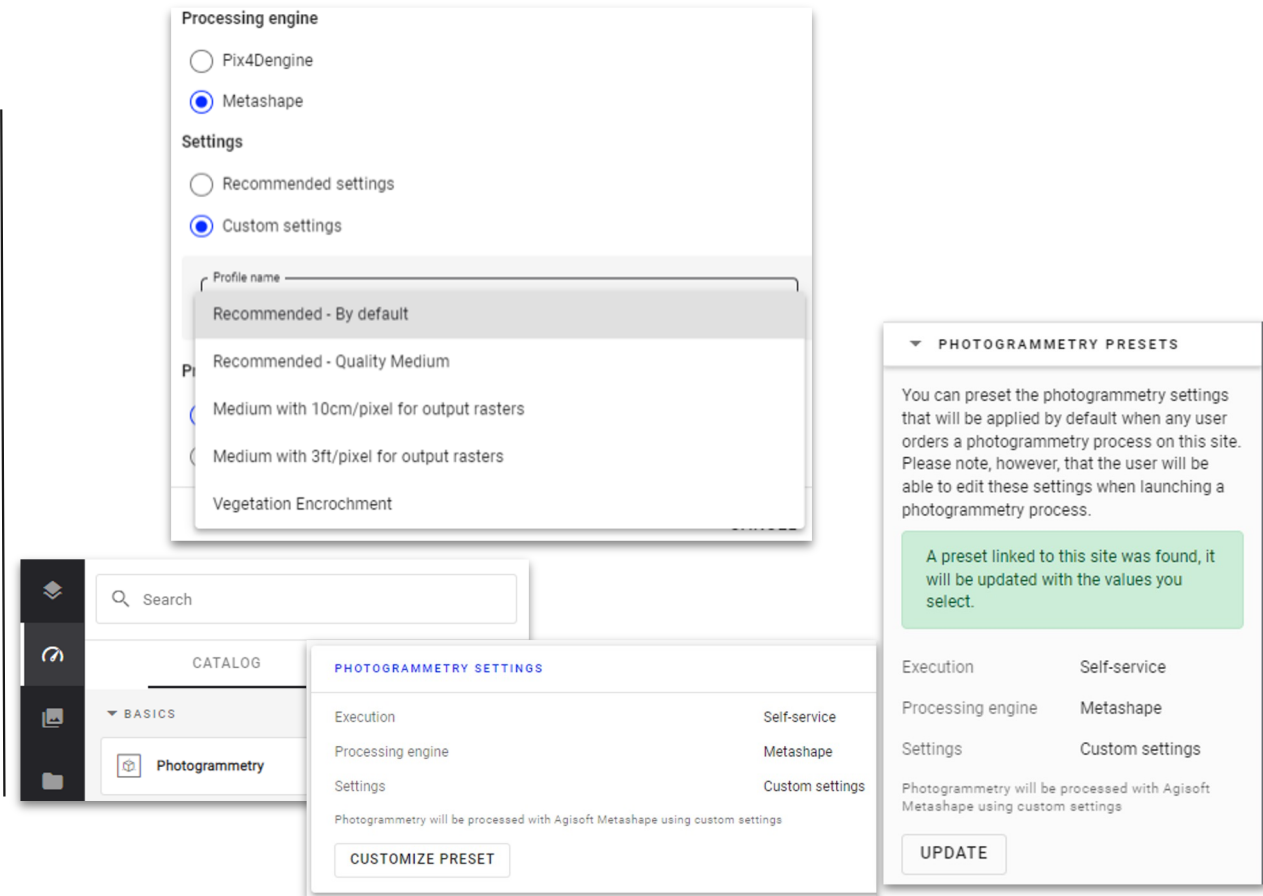
**Impacted User Experience  
& Visual Changes**

## Custom Settings on Metashape Engine

Industry : All

Module : Your sites

- Before improvement, it was only possible to launch Metashape processing with Recommended Settings
- After improvement, Custom Settings for metashape are available in a variety of well optimized processing profiles
- New custom settings on Metashape engine:
  - Recommended - By default
  - Recommended - Quality Medium
  - Medium with 10cm/pixel for output rasters
  - Medium with 3ft/pixel for output rasters
  - Vegetation Encroachment
- Custom settings on Metashape are available when:
  - Ordering Photogrammetry
  - Establishing Site presets
  - Defining Company presets



Impacted user experience and visible changes

R2022.35

Alteia - 2022

---

## Batch Function for *Pin to Site*

---

Industry : All

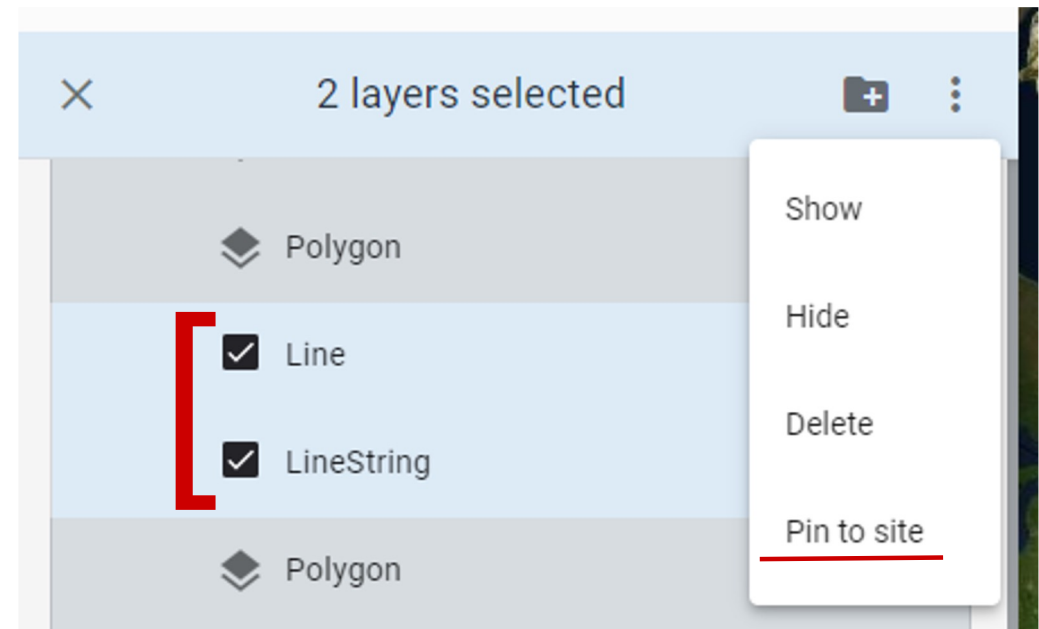
Module : Your sites

Before Improvement:

- The User could pin one annotation to the site allowing that annotation to be visible within any survey of that project.

After Improvement:

- The user can pin several annotations to the site at one time. The action can be performed in batch regardless of annotation type.
- You can also unpin multiple annotations from the site at one time.



Impacted user experience and visible changes

R2022.35

Alteia - 2022

---

## Survey Selector Callout

---

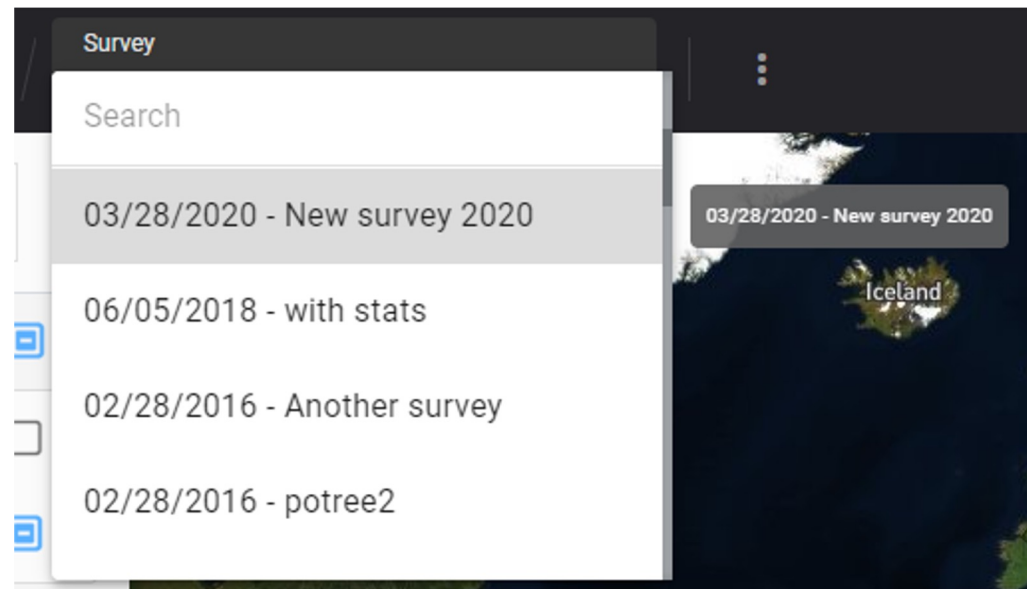
Industry : All

Module : Your sites

- Survey names in the survey dropdown have a visibility limitation due to the fixed date prefix.

Alteia will display the full survey name to the right of the tooltip after hovering for a few seconds.

This gives the user access to more information without blocking other survey names in the list.



Impacted user experience and visible changes

R2022.35

Alteia - 2022

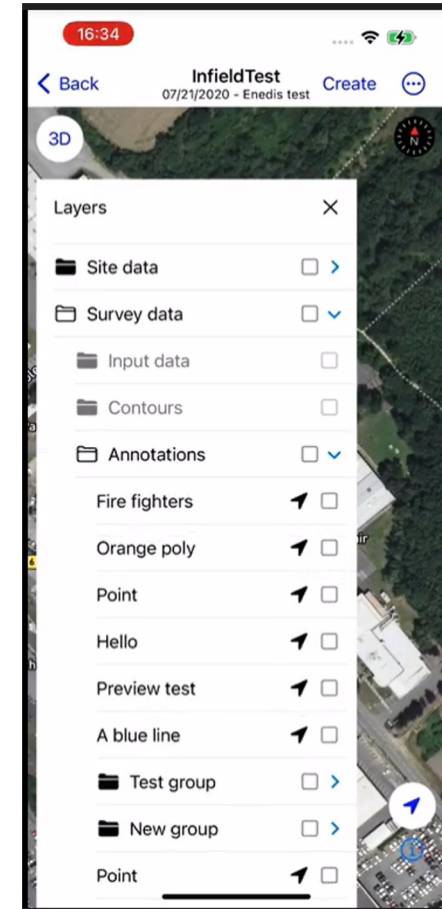
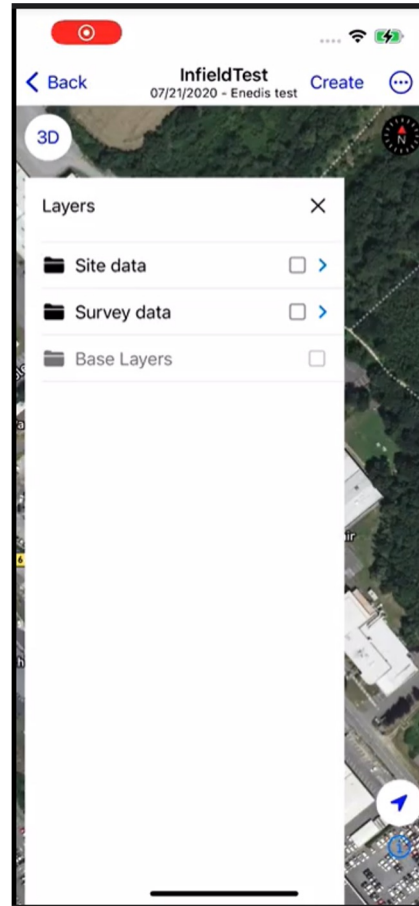
**Alteia Capture Mobile app**

# Info Panel/Layers

Industry : All

Module : Altea InField for IOS

- InField for iOS will see new data exploration features and an improved layering structure
- Users can now access layer groups and individual annotations at the bottom of the application
- Layer group naming structure in the InField app will match the Altea web application (Site Data, Survey Data, Base Layers, etc.)



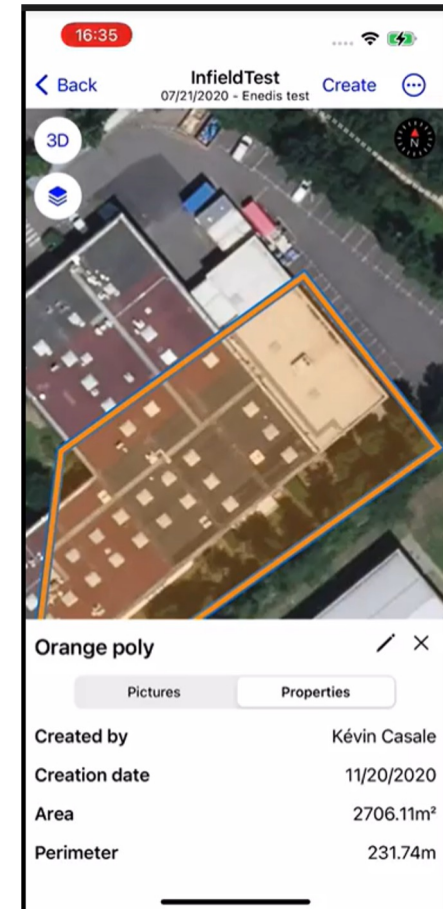
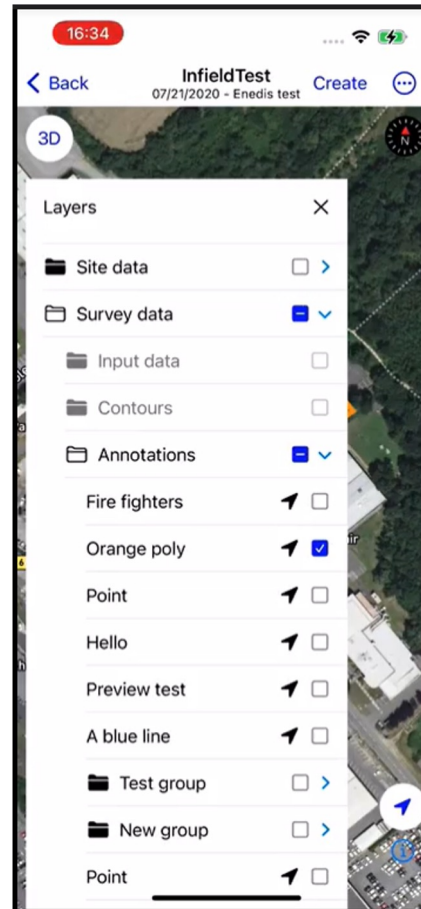
Altea Capture Mobile app	
R2022.35	Altea - 2022

# Explore Annotations

Industry : All

Module : Altea InField for IOS

- Annotation viewing in the latest release is much more powerful and robust
- Annotation groups can be expanded and individual annotations or separate subgroups can be toggled for review
- A selected 2D annotation will be denoted on the screen with a **blue halo** and the associated metadata for the individual feature is made available for user review



Altea Capture Mobile app

R2022.35

Altea - 2022

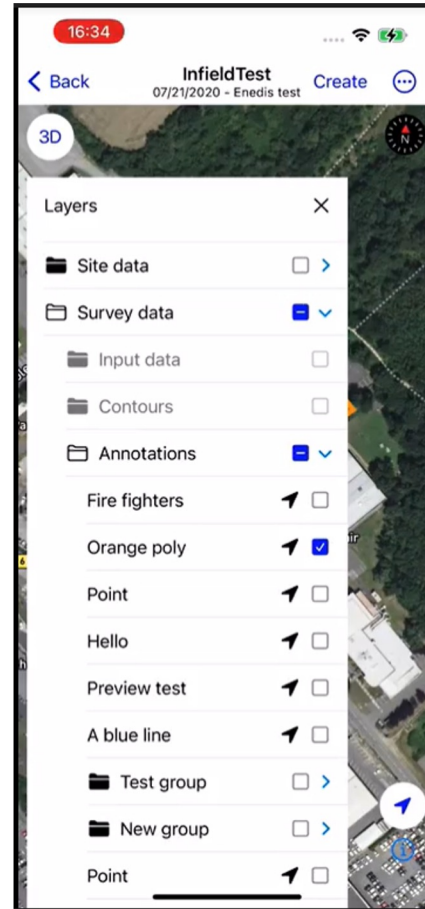
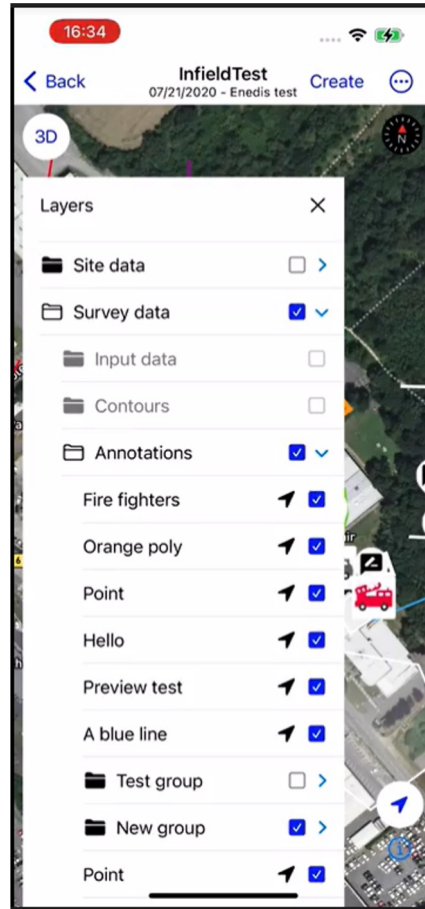


# Explore Annotations

Industry : All

Module : Alteia InField for IOS

- Within groups, individual annotations can be toggled on and off as well as selected and located individually
- Annotation style, including color and icon type, will match the Alteia web application



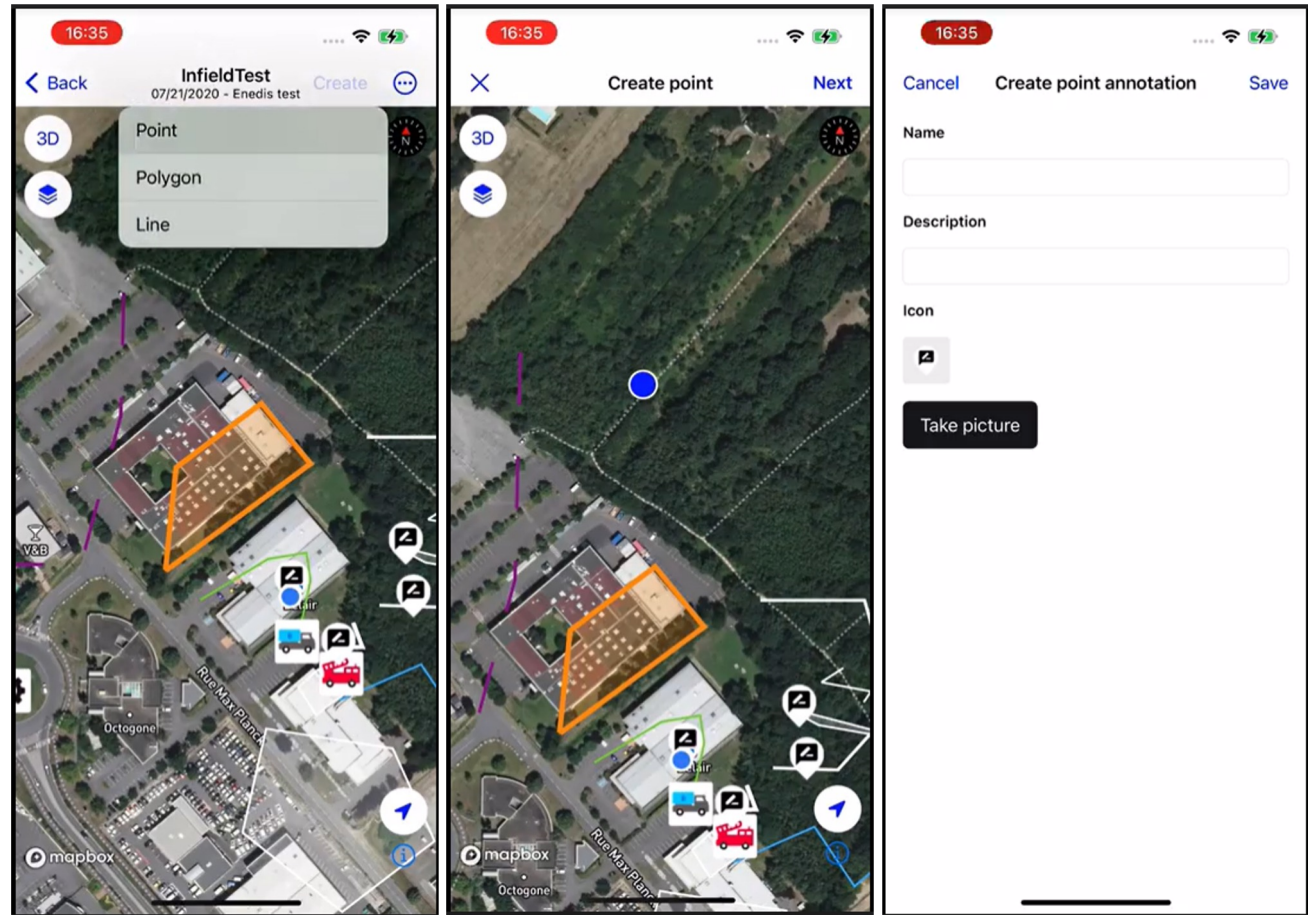
Alteia Capture Mobile app	
R2022.35	Alteia - 2022

# Create Point

Industry : All

Module : Alteia InField for IOS

- Before improvement, a User could generate a point annotation only by using their current GPS location to specify the point position
- After improvement, a User can select “Create > Point” and generate a point annotation at any desired location using the mapping interface



Alteia Capture Mobile app	
R2022.35	Alteia - 2022

# Alteia

SUPPORT <a href="mailto:support@alteia.com">support@alteia.com</a>	PRESS INQUIRY <a href="mailto:press@alteia.com">press@alteia.com</a>	SALES <a href="mailto:sales@alteia.com">sales@alteia.com</a>	EVERYTHING ELSE <a href="mailto:contact@alteia.com">contact@alteia.com</a>
---	---	---	---

[alteia.com](http://alteia.com)