

# Alteia

R2023.07

## New features

## Your sites > All industries

It is now possible to take **measurements** based on the **SRTM database** (1):

- **Point:** Elevation
- **Line:** 3D distance, Slope, Delta Z

The SRTM is **automatically selected** when no DSM(2) or DTM(3) is available in the area.

### Limitations:

- *Less precise than a DSM or DTM*
- *The SRTM resolution will depend on the area of interest*
- *Currently not available:*
  - *SRTM display on a map*
  - *Area, Volume, elevation profile*

### Value for the customer:

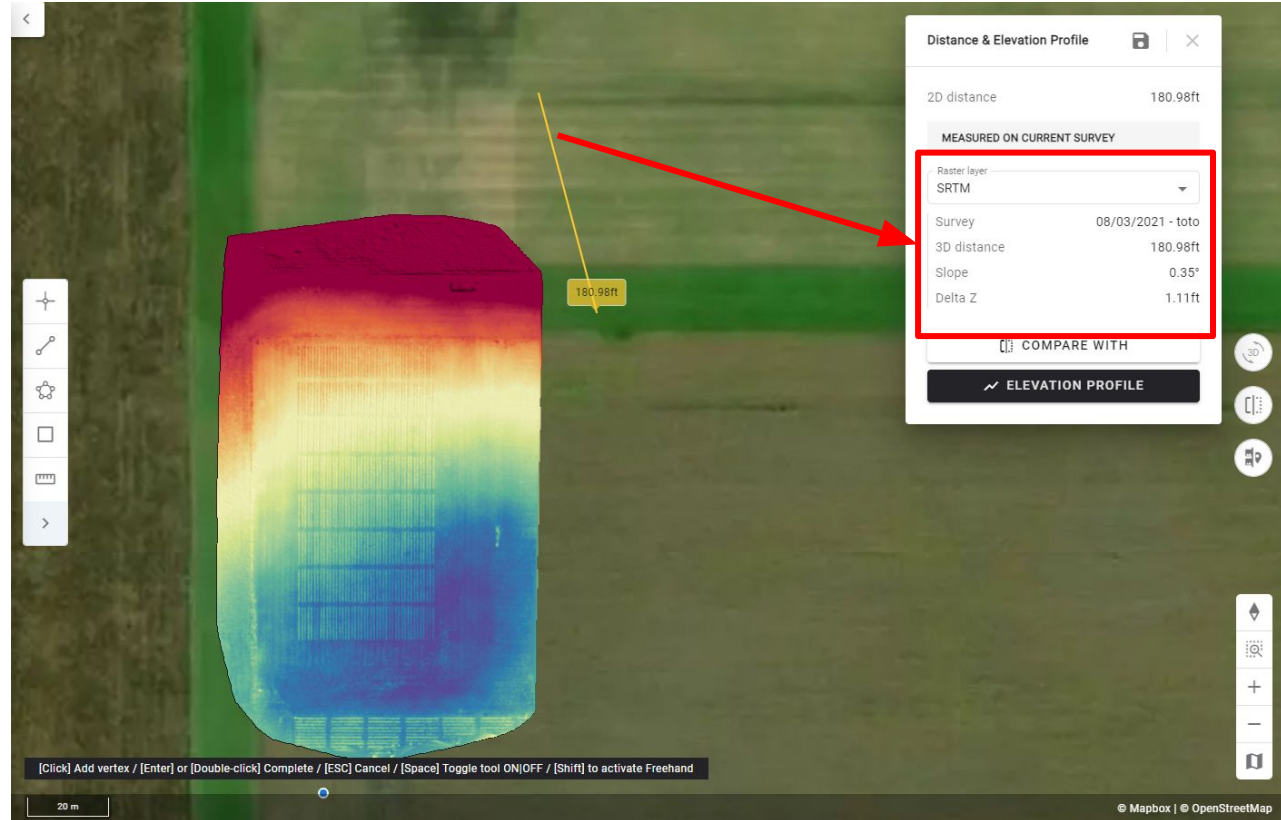
**Elevation measurements are now possible even when the user has not supplied elevation data (DSM, DTM).**

**Ex: users working with satellite images only.**

(1)SRTM: Shuttle Radar Topography Mission

(2)DSM: Digital Surface Model

(3)DTM: Digital Terrain Model



[Click] Add vertex / [Enter] or [Double-click] Complete / [ESC] Cancel / [Space] Toggle tool ON/OFF / [Shift] to activate Freehand

20 m

[Knowledge base article](#)

Your sites > All industries

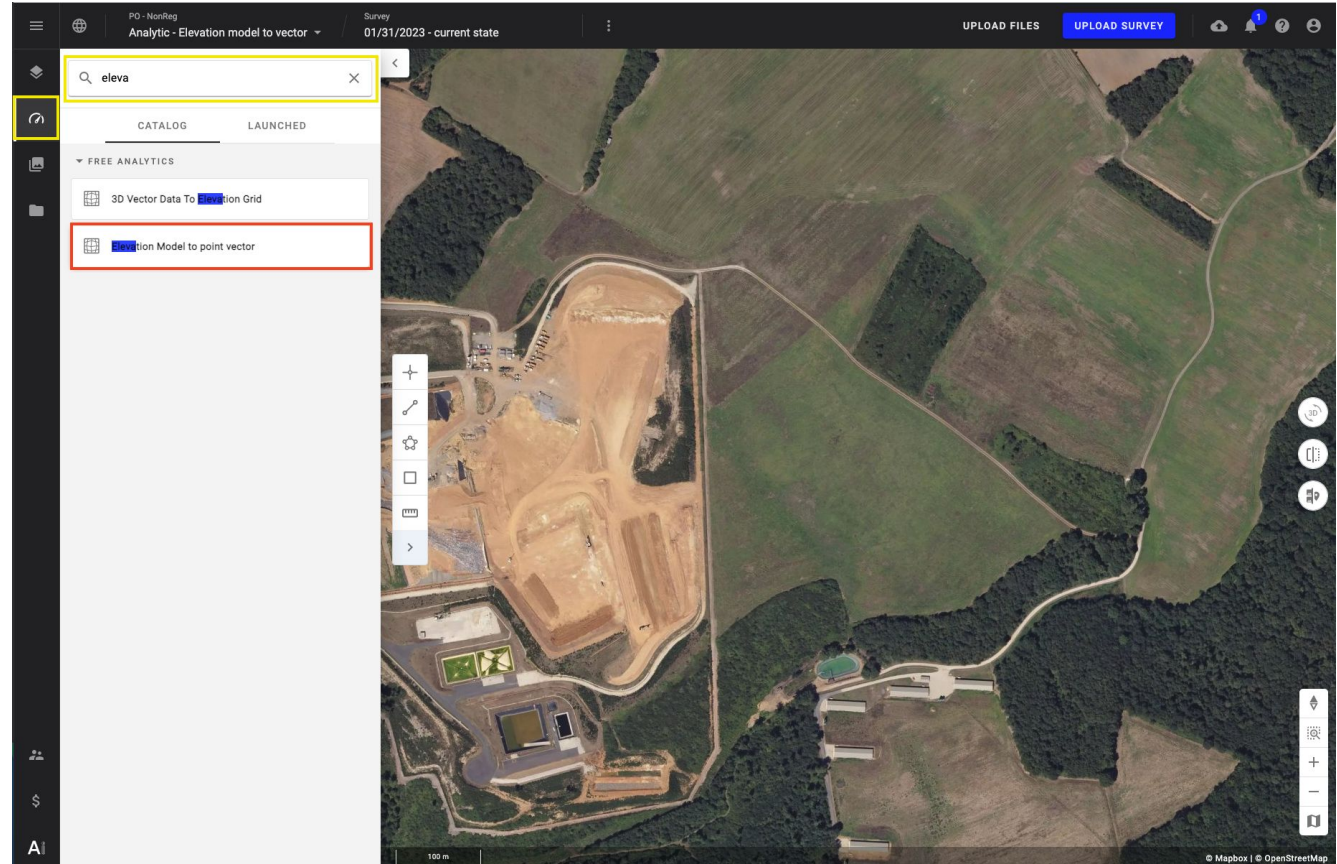
The **Elevation Model to Point Vector** analytic is now available to all users as a free tool.

This tool converts surface files, such as DSMs or DTMs, to point vector files in DXF format. The new DXF file is then available in the download section at the user specified resolution.

*\*File is not visualized. Download only.*

Value for the customer:

**Allows the user to convert their large surface files to a point file in a common DXF format so they can be easily ingested into their CAD, Planning, GIS, other software.**



## Bug Fixes

Vertical	Module impacted	Bug fix description	Sharing
ALL	Your sites	<p><u>Before Release:</u> “convert to field boundaries” task didn’t work for annotations linked to the site</p> <p><u>After Release:</u> the task is now working for annotations linked to the site</p>	Internal Customer: All

# Alteia.com

2023

Release Notes