

Alteia

2023.11

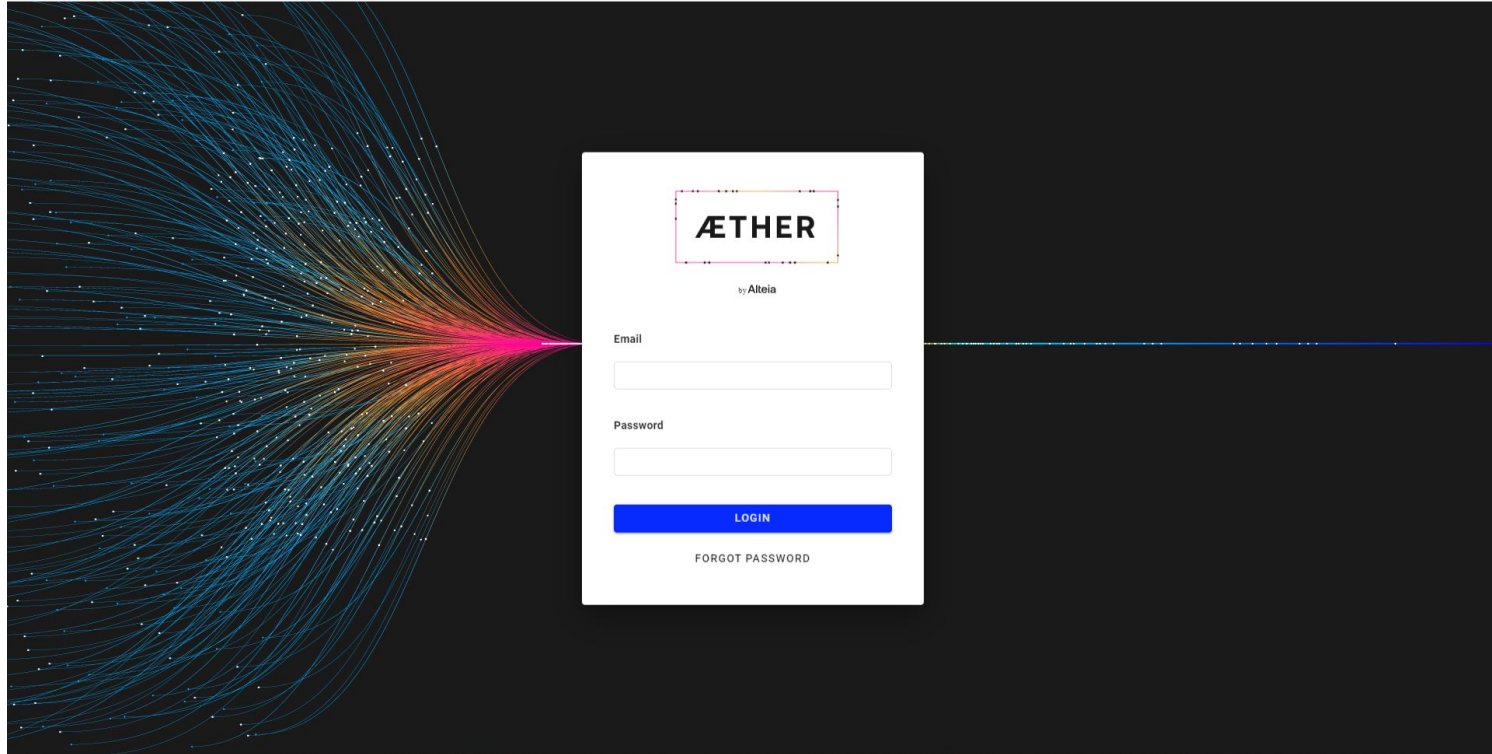
Deployment date 14-March-2023

The Alteia platform is now called ÆTHER

The login page and icon have been redesigned

Customer accounts on Alteia domain will benefit from this new display

Customers accounts on a specific domain (white label) will keep their existing branding



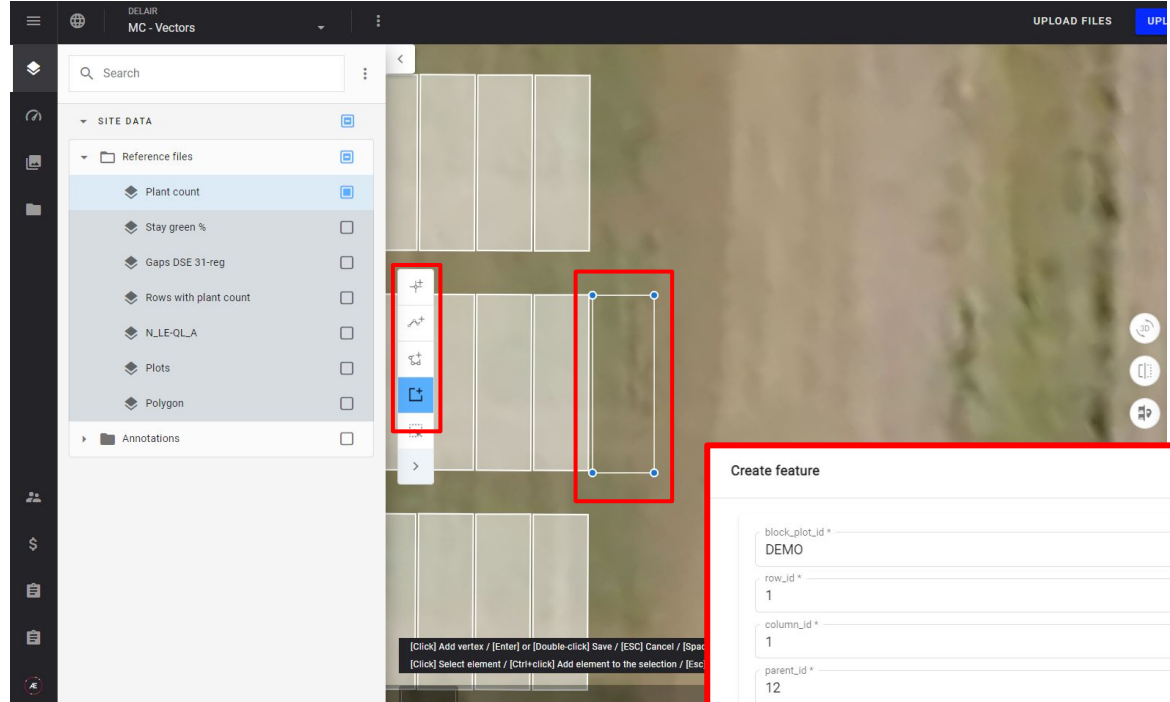
Your Sites

Agriculture & Forestry

It is now possible to add features to an existing vector file (in geometry edition mode)

Main capabilities:

- Add points, lines, polygons (free shape), rectangles to existing vector
- Add the attribute values to the new features



Value for the customer: possibility to fully edit vectors on the platform.

Example of use cases:

- Add new microplot to a microplot file.
- Annotate analytic outputs to retrain Deep Learning models.
- Complete any vectors uploaded or generated in the platform with missing polygons, lines, points....

Mines & Quarries

It is now possible to add features to an existing vector file (in geometry edition mode)

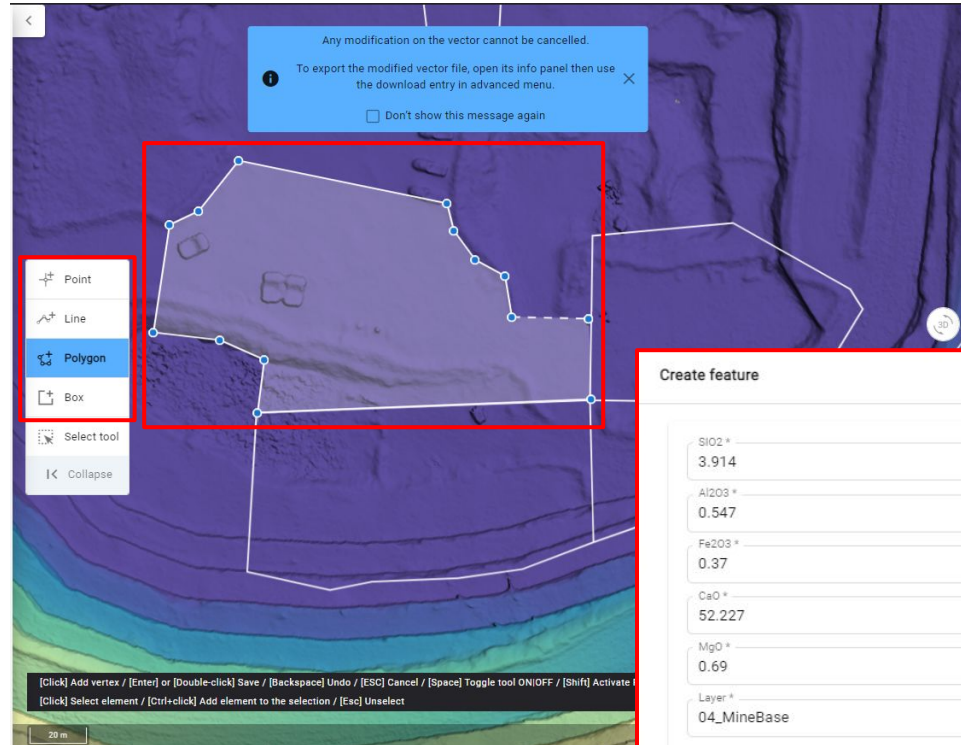
Main capabilities:

- Add points, lines, polygons (free shape), rectangles to existing vector
- Add the attribute values to the new features

Value for the customer: possibility to fully edit vectors on the platform.

Example of use cases:

- Add new microplot to a microplot file.
- Annotate analytic outputs to retrain Deep Learning models.
- Complete any vectors uploaded or generated in the platform with missing polygons, lines, points....
- **Add new exploration zone to mine plan**



Agriculture & Forestry

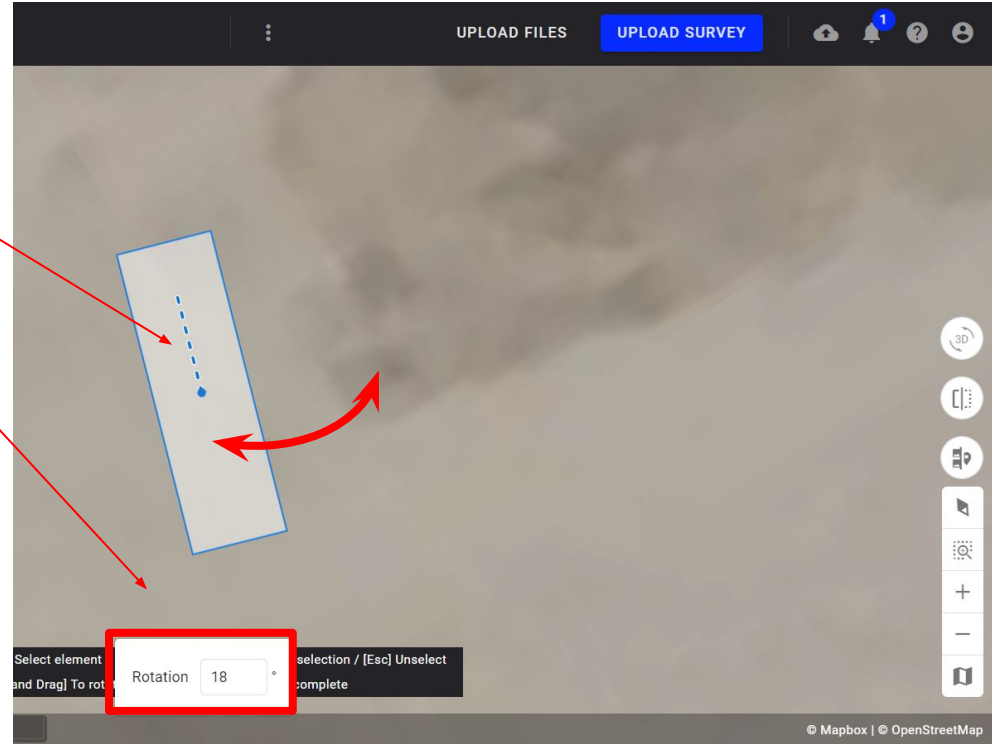
Rotation tool has been redesigned: it is now possible to rotate a selection using the mouse or entering a value in the corresponding field.

The rotation degree is now displayed when using hand rotation

Note: before the release, the rotation by hand and the rotation from a value were separated into 2 different tools.

Value for the customer:

UI / UX improvement



Mines & Quarries

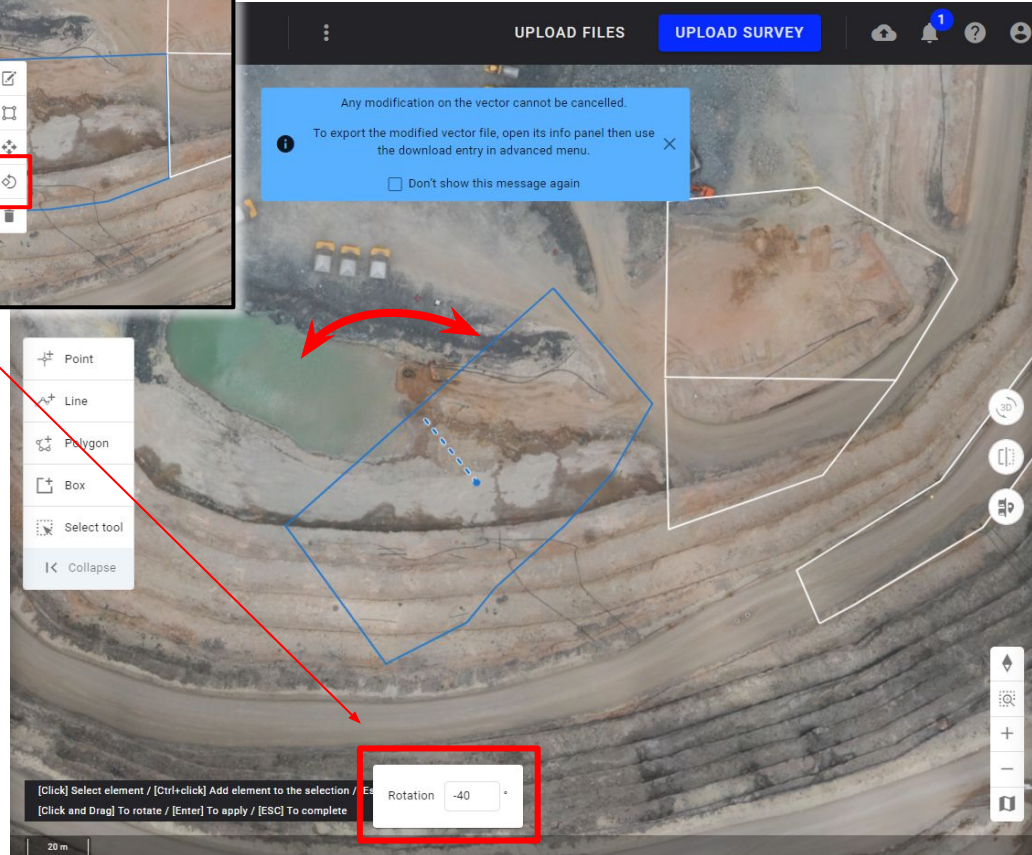
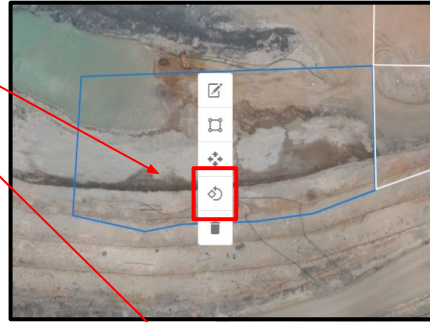
Rotation tool has been redesigned: it is now possible to rotate a selection using the mouse or entering a value in the corresponding field.

The rotation degree is now displayed when using hand rotation

Note: before the release, the rotation by hand and the rotation from a value were separated into 2 different tools.

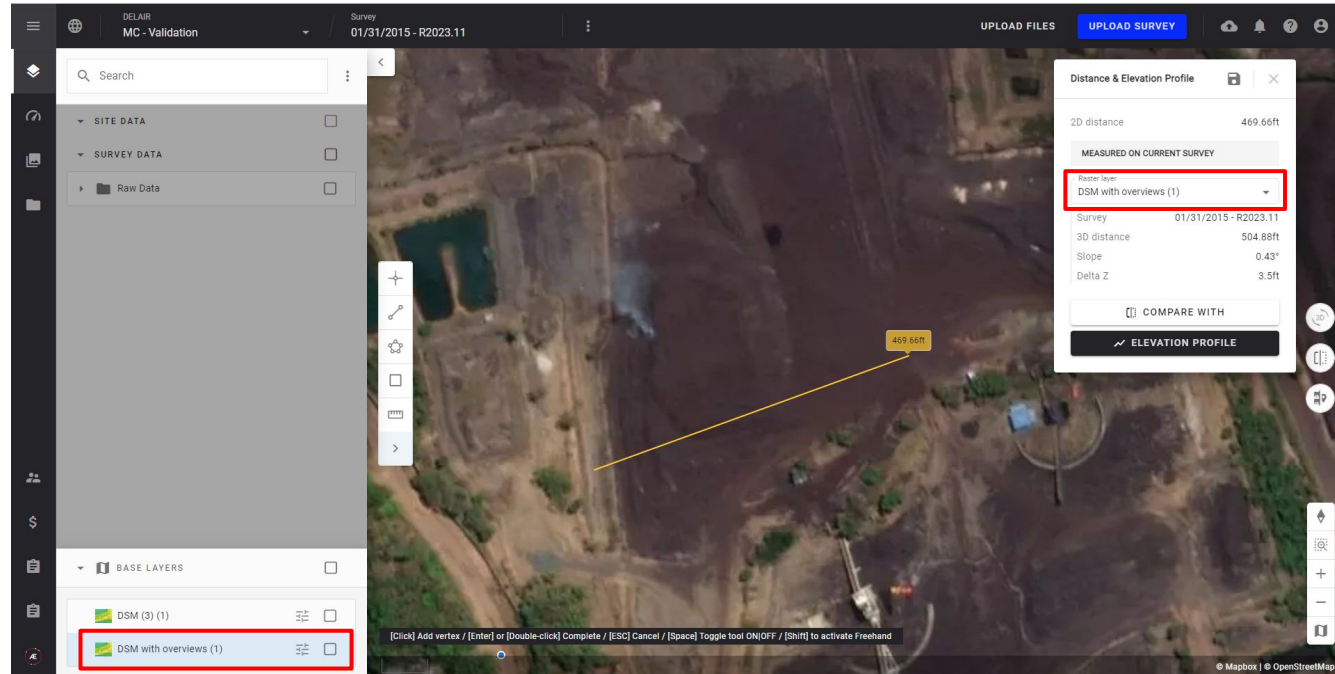
Value for the customer:

UI / UX improvement



Improvement for 2D elevation measurement tools:

- If a DSM or DTM is actively displayed, it will be automatically selected to compute the measurement.
- If a DSM or DTM in the survey matches the location of the measurement, it will be automatically selected to compute the measurement.
- If no DSM or elevation raster is present, the SRTM background elevation layer will be automatically selected to compute the measurement.

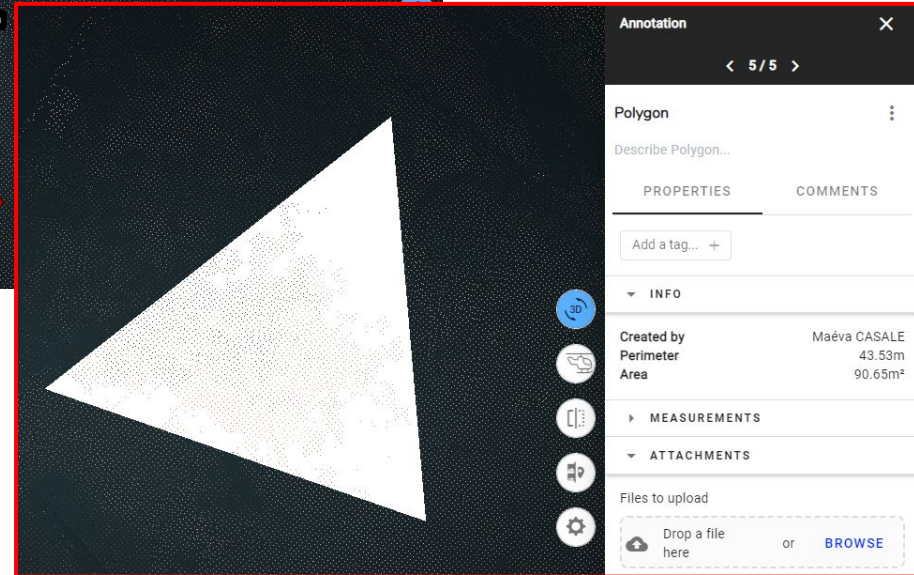
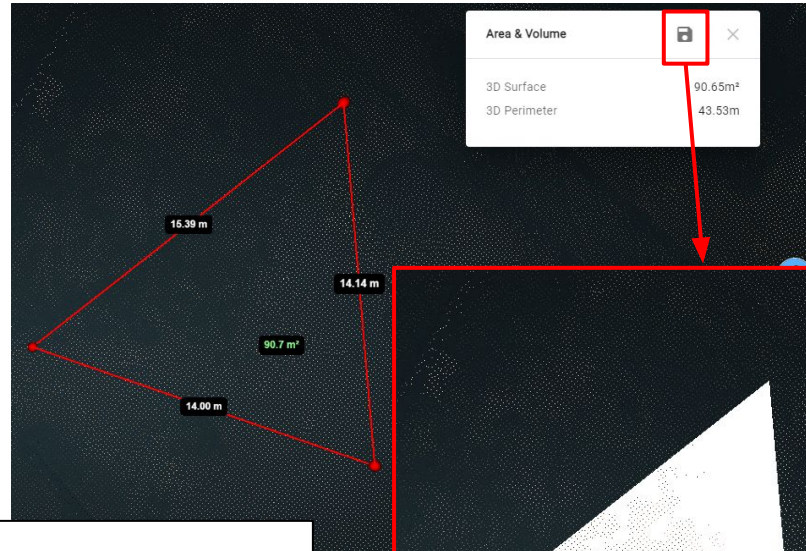


Value for the customer:

This improvement makes the platform's measurement tools more intuitive and predictable for the user by auto populating the most logical source for elevation data.

Convert 3D Measurements to Annotations

A new improvement to the 3D measurement tools allows the user to convert their 3D measurements to annotations.



Value for the customer:

Users are able to test several measurements in the 3D viewer and convert any desired measurement to a saved annotation for future use or collaboration. This creates a streamlined user journey that is equivalent to how the 2D tools operate.

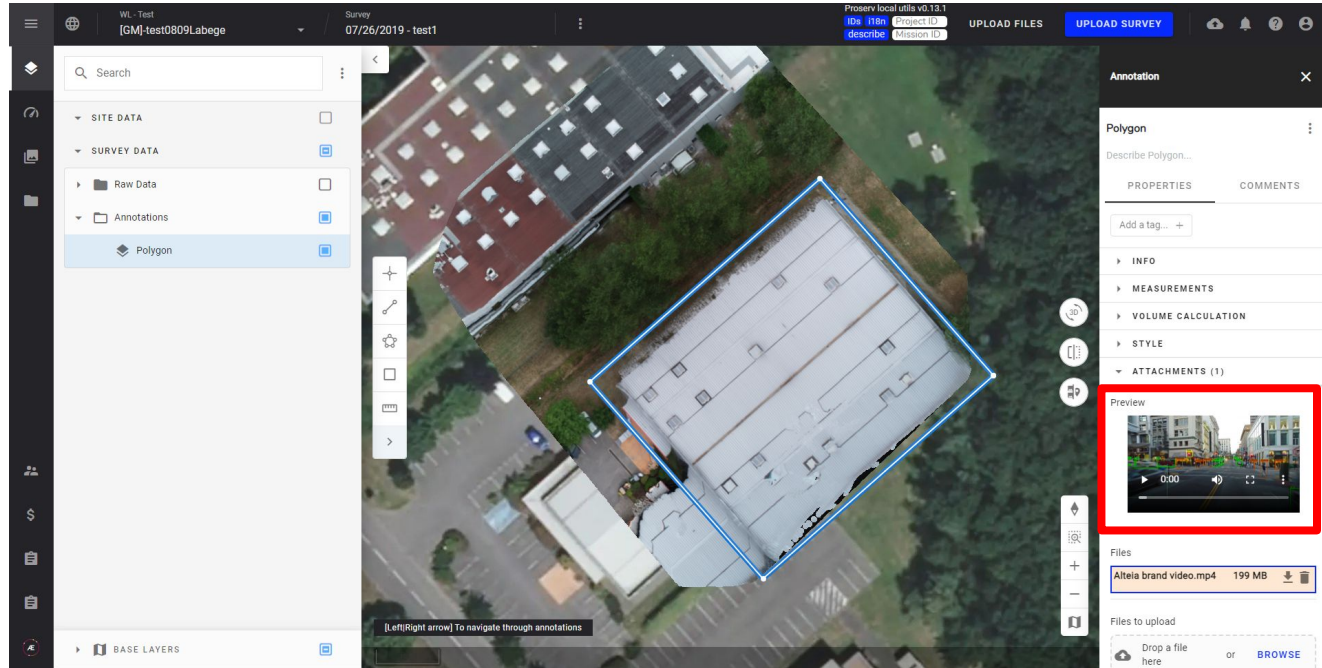
A video viewer is available for video files attached to annotations.

The video file/s can be extended to full screen.

Value for the customer Capability to visualize and share videos related to customer assets

Example of use cases:

- **Construction:** Monitor construction progress and share it to stakeholders
- **Mines:** Store and Monitor recorded blasting operations
- **Asset Inspection:** Visualize videos of asset inspections
- **Agriculture:** record videos related to plant observations and attach them to corresponding areas of interest



Notes: At the moment, videos can't be taken or visualized with the Infield mobile App

Quick Access to File Downloads:

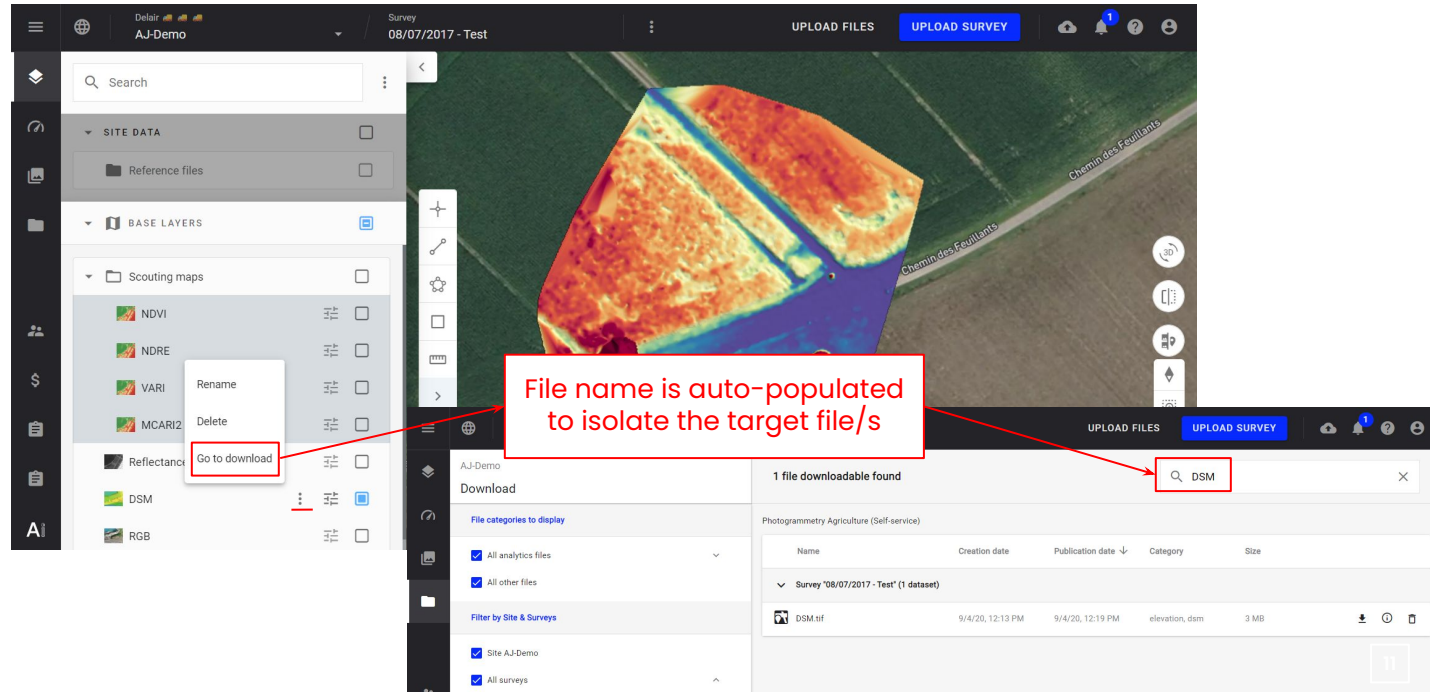
A new layer management improvement provides the user with quick access to download their data.

For raster, point cloud, and mesh files the “Go to download” function is available in the menu for each layer and will direct the user to a pre-filter download menu to isolate the target file for Download or Export.

**A file with a generic name will yield all results with a matching file name*

Value for the customer:

This feature improves data management for complex sites and allows for a much smoother experience when preparing data for integration with external softwares and workflows.



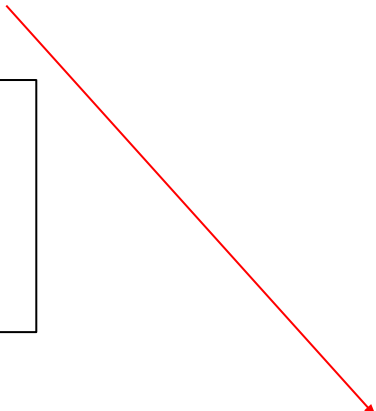
**User and company
management**

Other Domains

Domain managers will be able to manage a new property: “company tag”

Value for the customer:

reseller can automatically link their usage per company to their customer account in their ERP



Administration

Edit company

INTERNAL SETTINGS

Internal settings description

Company type

Internal company

ERP ID *

9991112233

Digits only

Other properties

Credit Tracking enabled for managers

R&D usage allowed

Marketing usage allowed

Custom T&C

PROPERTIES

Set up the basic information of your new company

Company name *

compagnietest2kac

Company short name

4 to 30 lowercase, alphanumeric characters only

Vertical Market *

CONSTRUCTION

Trial company

Company tag

comapy_tag_test

Bug Fixes

Module impacted	Bug fix description
Your Site - 2D	Annotation deletion issue: user can now delete annotations using the right-click + trash bin icon or using the layer panel.
Your Site	When deleting last style available on a vector, it is effectively deleted from the vector itself (before, it was remaining visible)
Your Site	When ordering a photogrammetry, GCP coordinated tagging has been adapted to portrait pictures. There was a shift before.
Your Site - 2D	In raster styling options, "Hide out of range data" checkbox wasn't checked whether it was activated or not. It has been fixed.
Data Capture	<p>In "New sensor" form, the "Firmware" label was missing.</p> <p>In "New carrier" form, a key was displayed instead of the correct name in the "Carrier model" field</p>
User & company manager	<p>Domain managers could not see the user's companies from the list of users (their companies were hidden in this view even if the domain manager has the right to have all information related to the domain)</p> <p>Domain manager could only export the list of users belonging to the same company as him (not the same domain)</p> <p>→ Fixed: Domain manager can see and export users of all companies of its domain</p>
User & company manager	Domain managers had to logout then login to see his newly created company
Season Planner	The status was not updated in the Estimations tab after triggering an action
Season Planner	The statuses were not updated in live in the Estimations tab

Alteia.com

2023

Release Notes