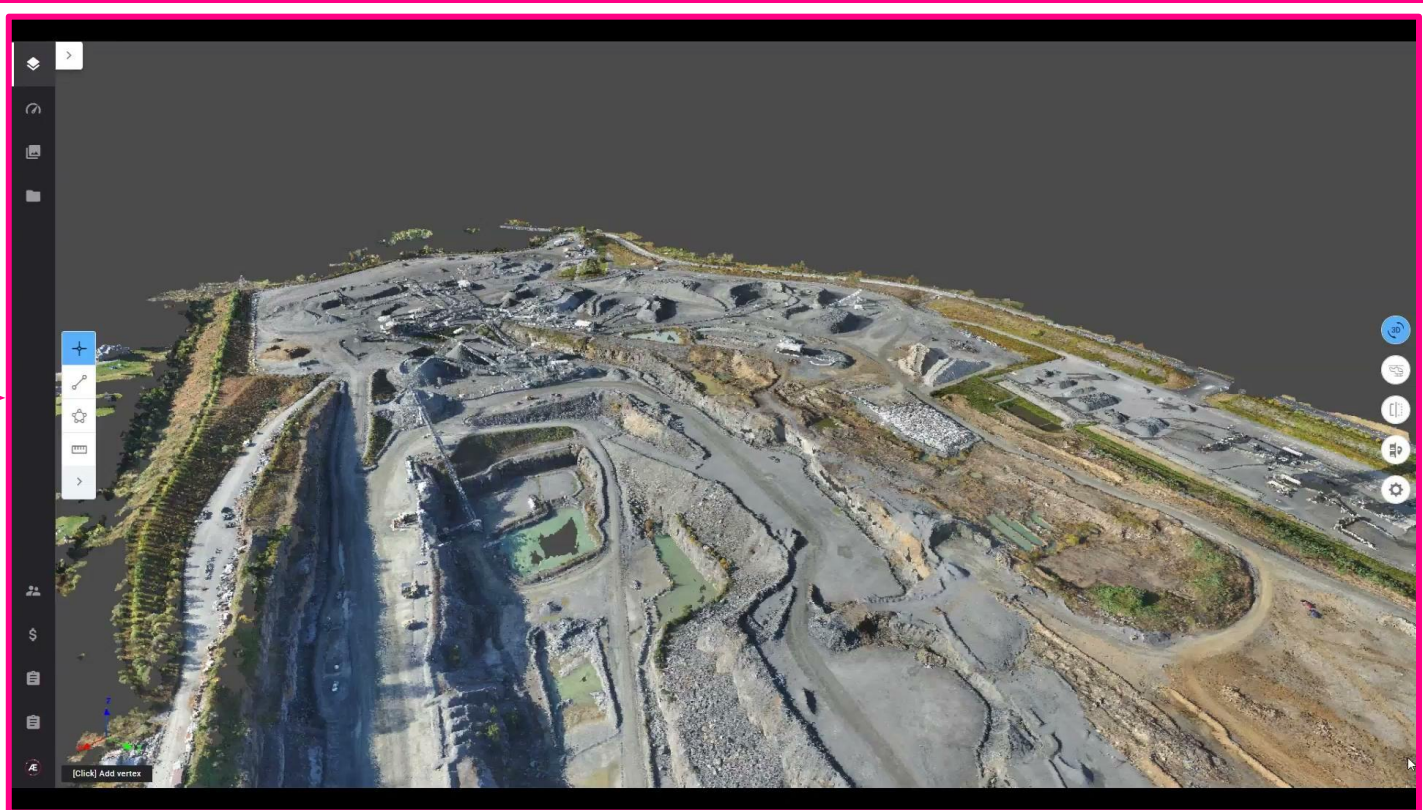
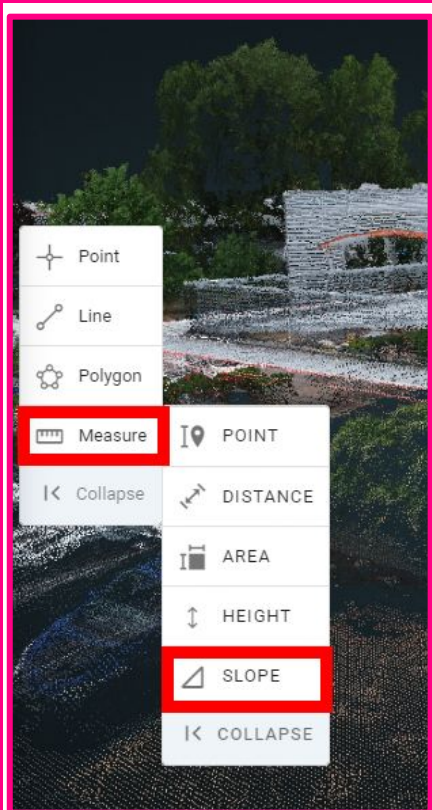


The word "AETHER" is written in a bold, white, sans-serif font. It is centered within a rectangular frame. The frame is composed of a thin line that is primarily pink, with a yellow-to-orange gradient at the top and bottom edges. Small white dots are placed at regular intervals along the perimeter of the frame.

AETHER

2023.23 Release scope

Deployment date 06th-June-2023



Your Sites – Measurement Tools – 3D slopes

Users can now measure in 3D the slope of some objects

Data Capture (last synchronization: 1 minute)

KAC - DEMO MISSION - ms [SPL] Scheduled

TASK PROGRESS

- ✓ Pending on 05/16/2023
- ✓ Ready on 05/16/2023
- ✓ Assigned on 05/16/2023
- ✓ Scheduled on 05/16/2023
- 5 Data captured**
To perform the capture operation
- 6 Data submitted
To upload data
- 7 Completed
Data uploaded and waiting for photogrammetry results

1 To perform the capture operation

CHECK DATA QUALITY

OFFLINE MODE: You can check the quality of the data acquired but an Internet connection is required to upload it to Altea

REPORTING	DATASETS
<p>Field report Required ADD</p>	

TASK PROPERTIES	LOCATION & CONTACT
<p>Identifiers</p> <p>Task name: KAC - DEMO MISSION - ms [SPL]</p> <p>Purpose: Mapping</p> <p>Trial: [REDACTED]</p> <p>Field: [REDACTED]</p> <p>Altea site</p> <p>Company: [REDACTED]</p> <p>Site: [REDACTED]</p> <p>Survey: [REDACTED]</p>	<p>Address</p> <p>Mission area</p> <p>no mission area</p> <p>Contact info</p>

SCHEDULING	ASSIGNMENT

Quality Check

Check images quality

QUALITY CHECK REPORT

Images

Camera(s): DJI_FC300X_ (5)
Number of Images selected: 5 (426 KB)

Check details 3 Passes, 5 Warnings, 2 Failures

Date of acquisition ⚠️

Check datetime-acquisition status: warning ⚠️

Flight values ❌

Orientation of some images are out of range ❌
No RTK available —
RTK horizontal positions not available —
GSD ratio not available —

Sensor values ✓

ISO value is lower than 400 for all images ✓
Aperture not available —

Additional checks ❌

Sun light is not high enough during this acquisition ❌
Image collection axes seem to be complete ✓
No missing bands detected ✓

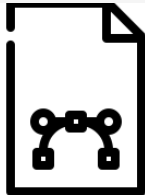
BACK **QUIT**

New quality checks in Data capture desktop application

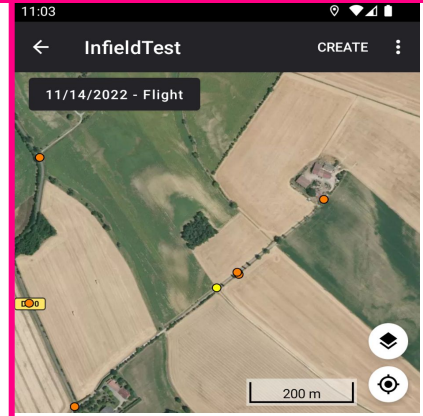
RTK accuracy, RTK horizontal deviation, ISO, Aperture, Blur risk can now be controlled directly in the field without internet connection.

To access the new version please download it from the [knowledge base](#).

[Link to kb](#)

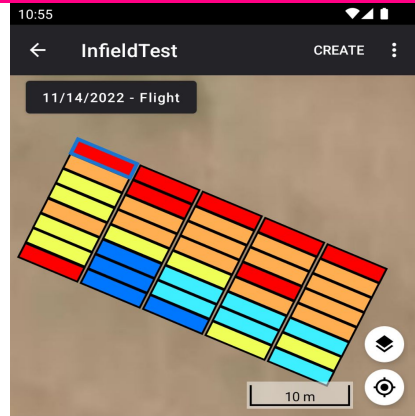


vectors



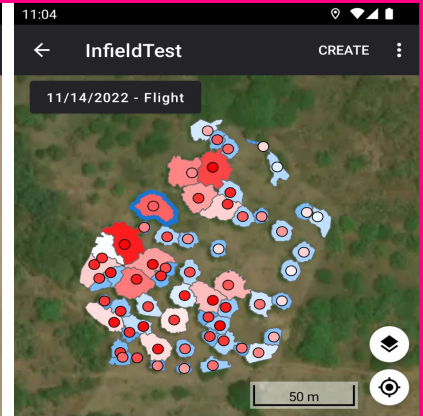
GCP ×

id	gcp8
x	400185.068
y	4810939.668
z	222.5427



Plant height statistics ×

Properties	Pictures
block_col_id	5.0
block_plot_id	008005
block_row_id	8.0
count	4375.0
decile_1	0.0
decile_2	0.023681640625
decile_3	0.06123046875



Tree Crowns ×

Properties	Pictures
tree_crown_surface	240.68240451068513
tree_crown_surface_unit	m2
tree_id	12.0
tree_id_unit	
treetop_height	6.0527801513671875
treetop_height_unit	m

Infield Mobile (Android) – UI review and vector map display

Enhanced viewing capability thanks to a brand new feature supporting vector files (possibility to view attributes)

New supported Drones and multispectral sensors



- DJI Mavic 3M and Micasense RedEdge-P multispectral sensors are now supported for photogrammetry (Pix4D Engine)

[Link to KB](#),
[Link to KB](#)
[Link to KB](#)