

The word "AETHER" is written in a bold, white, sans-serif font. It is centered within a rectangular frame. The frame is composed of a thin line that is primarily pink, with a yellow-to-orange gradient at the top and bottom edges. Small white dots are placed at regular intervals along the perimeter of the frame.

AETHER

2023.27 Release scope

Deployment date 4th-July-2023

Your Sites - Upload CSV Points File to Generate Vector Layer

Uploading a CSV file containing bulk points data allows the user create a new vector layer containing all point features.

CSV settings are defined during the upload process

- Easily upload data from traditional field surveys collected by Base & Rover
- Integrate IoT and sensor array data into your surveys by uploading as CSV
- Leverage attribute search and styling capabilities to perform complex analysis

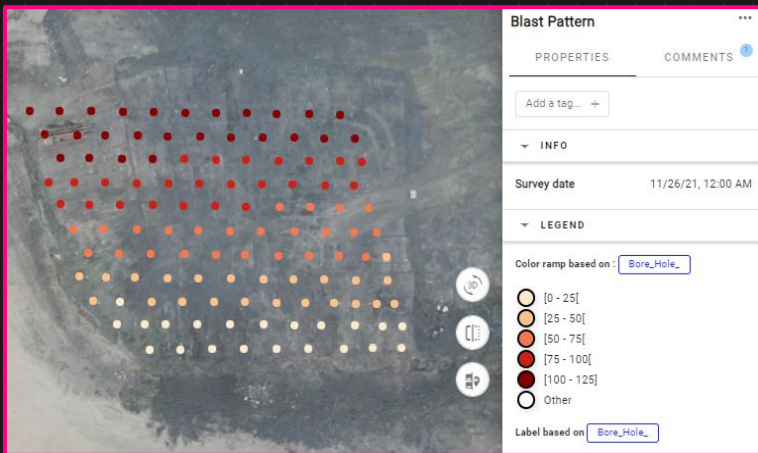
Point vector layer is displayed on the map view and CSV attributes are available in the properties panel

Your Sites - Upload CSV Points File to Generate Vector Layer - [Benefits and Use Cases](#)

Integrate and visualize static data from a wide variety of sources. User benefits and interesting use cases are described below.

Use Case: [Blast Pattern Survey](#)

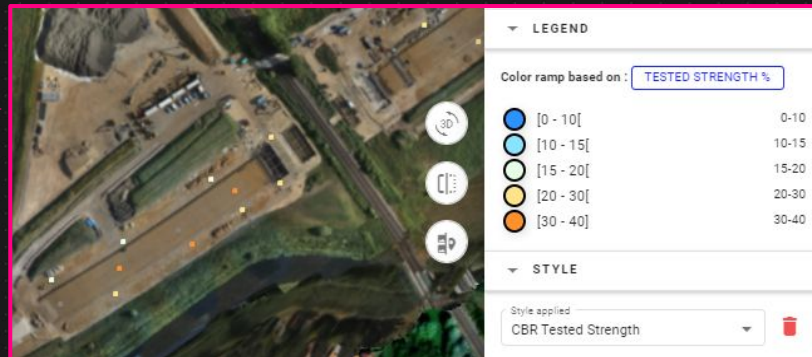
A mining blast pattern is plotted by a Base & Rover ground survey before drilling begins. The data is visualized for critical mine planning and borehole comparison.



Use Case: [CBR Testing](#)

A soil compaction sensor tests the force required to penetrate soil at various locations.

The results are integrated into the project to easily map the distribution of soil class and hardness across the worksite



Benefits to Users:

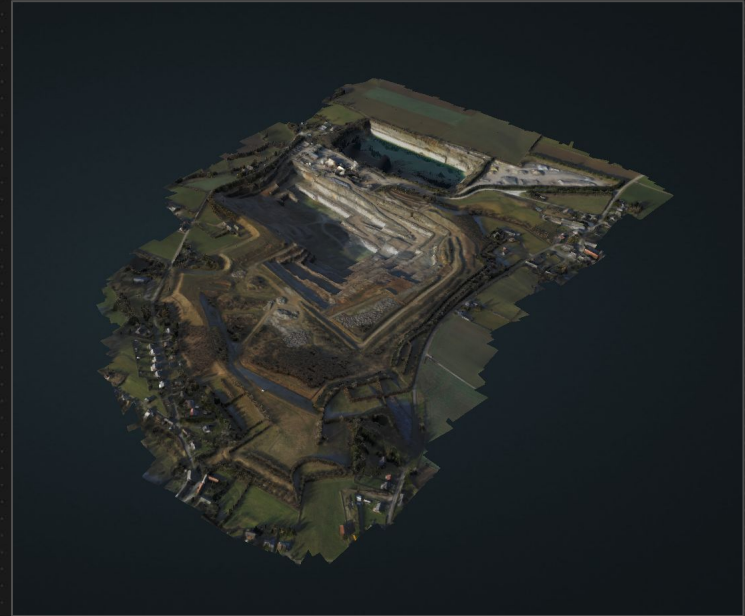
- A single upload easily contextualizes large point data sets
- Expanded device integration possibilities such as base and rover, unique sensors, IoT devices and more
- CSV visualizations can be customized and vector tools allow the user to add, delete, edit, and filter the dataset

Your Sites - 3D Viewer Improvement for 3D Models

A new 3D Viewer improvement for 3D Models improves mesh brightness and clarity based on the file's native properties



Before



After

Benefit to Users:

-A backend platform improvement automatically improves the 3D mesh rendering clarity within the Aether 3D viewer. This especially benefits mesh files that appeared too dark once uploaded in the past.

Solved issues

MAIN TOPICS	MODULE
DTM creation from a vector -	Your Sites
Content Section not updated after switch to 3D -	Your Sites
Geometry edition: issue of background layers being unintentionally edited now fixed -	Your Sites
Ability to delete Local CRS file -	High Level User Features
Season Planner - Incorrect trial filtering on seasons is fixed Data Capture - Incorrect task filtering on dates is fixed -	Season Planner / Data Capture
Failed quality checks on images having same latitude or longitude -	Data Capture

Alteia.com

SUPPORT
support@alteia.com

PRESS INQUIRY
press@alteia.com

JOB OPPORTUNITIES
hr@alteia.com

EVERYTHING ELSE
contact@alteia.com

Our clients

