

The word "AETHER" is written in a bold, white, sans-serif font. It is centered within a rectangular frame. The frame is composed of a thin line that is primarily pink, with a yellow-to-orange gradient at the top and bottom edges. Small white dots are placed at regular intervals along the perimeter of the frame.

AETHER

2023.31 Release Scope

Deployment Date: 1st-August-2023

Summary

MAIN TOPICS	MODULE
Upload Files – Upload DXF with colors	Your Sites
3D Viewer – Data Clipping	Your Sites
Administration – Cold storage	Administration
2D and 3D Annotation Notifications – Email Template Update	Your Sites
Your Sites – Value at point tool improvements	Your Sites


Your Sites - Upload Files - Parse DXF Style

[Link to kb](#)

The new "Parse DXF style" option is available in the file uploader. When enabled, Aether platform will automatically assign the appropriate style to each layer based on the style the layer in the source file.

Upload a file

Dataset properties

Name*
Demo R2023,31 epsg27700 

Type*
Vector ▼ Category ▼

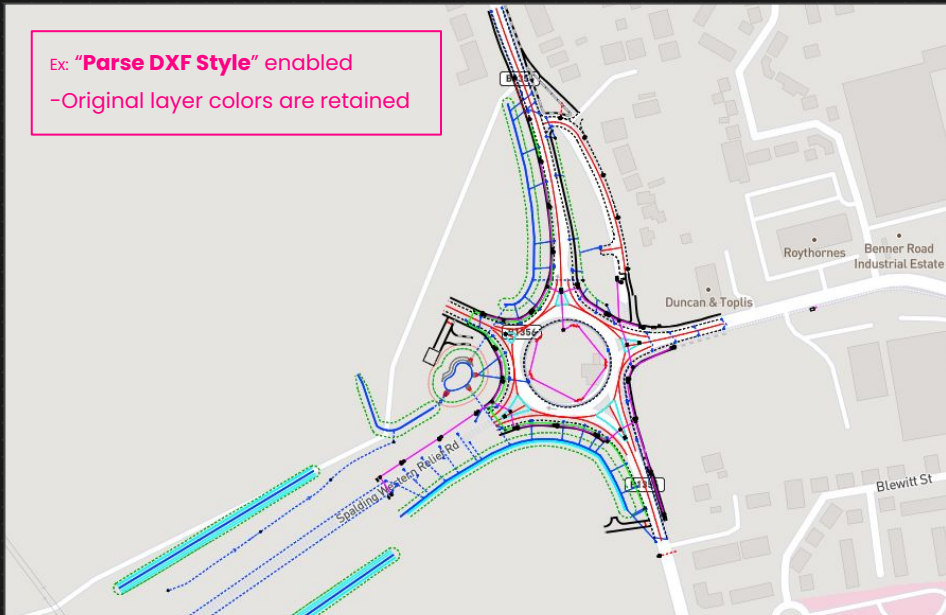
Parse DXF style

Global Coordinate Reference System (CRS) APPLY SITE CRS

Horizontal CRS (x,y)
EPSG:27700 - OSGB 1936 / British National Grid (Meters) ×

Vertical CRS (z) ▼

← BACK CANCEL UPLOAD



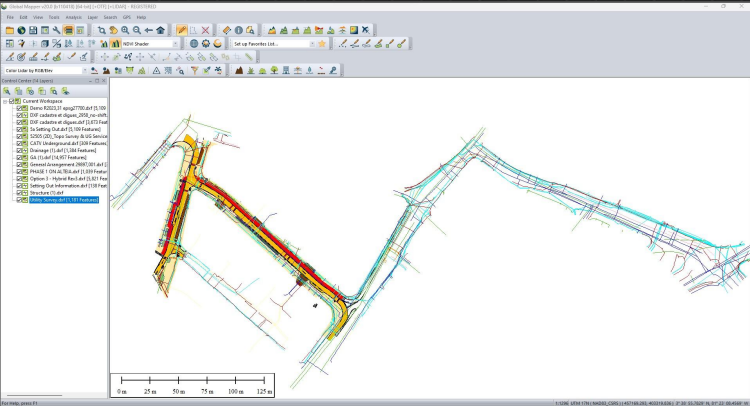
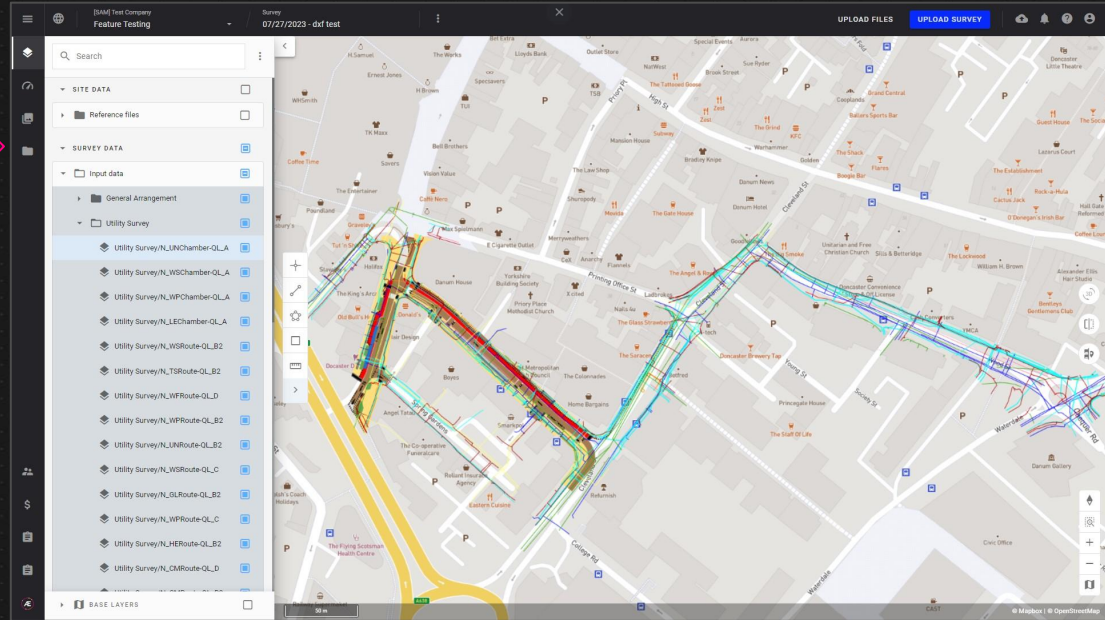
Note: Aether assigns one color per DXF layer

Your Sites - Upload Files - Parse DXF Style

[Link to kb](#)

“Parse DXF style” automates the difficult manual task of making an uploaded DXF file match its original style and format. Now, complex and color-coded design files from external solutions such as CAD, GIS, or design software are Drag & Drop, saving significant time and effort for the user.

- **Construction:** Color-coded underground utility surveys will automatically match the company's style standards
- **Engineering:** Complex civil design files can be leveraged by multiple stakeholders without manual work
- **Mining:** Large scale, long range mine plans can be easily integrated for reference against all surveys



Ex: Common in the industry, a third party GIS software is used to color code surveyed objects by layer

“Parse DXF style” automatically manages all object styles by layer and matches the external solution

Your Sites - 3D Viewer - Data Clipping

[Link to kb](#)

The new **Data Clipping** feature expands data exploration capabilities within the 3D Viewer. It is available as a standard 3D Viewer feature and can be activated once 3D data is available in a survey allowing for a new type of visibility filtering.

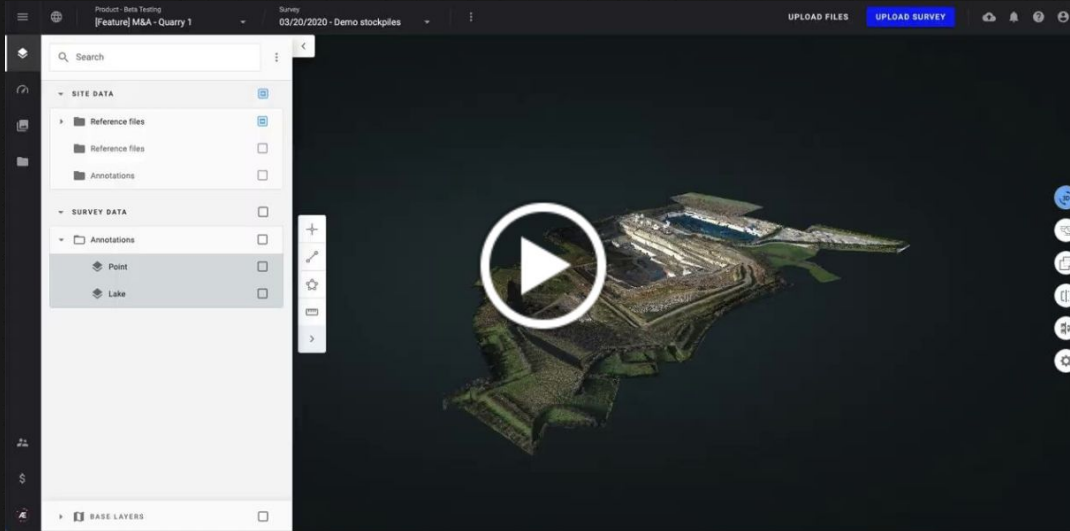
Achieve New Views:

→ Interior views from BIM data or SLAM lidar scans

→ Complex data with blocked views or hard angles

→ Transect views of narrow spaces

→ Cutaway views of vertical objects



Video example

“Data Clipping” is shown applied to a lidar scan in an underground gold mine.

The user is able to view the stope structure and ore body from various angles and is also able to view the narrow mineshaft.

Note: Data Clipping is available for “Your Sites” module only, the current version of Data Clipping limits the use of all other tooling while the feature is activated. Toggling the feature off will return 3D files to their full extents.

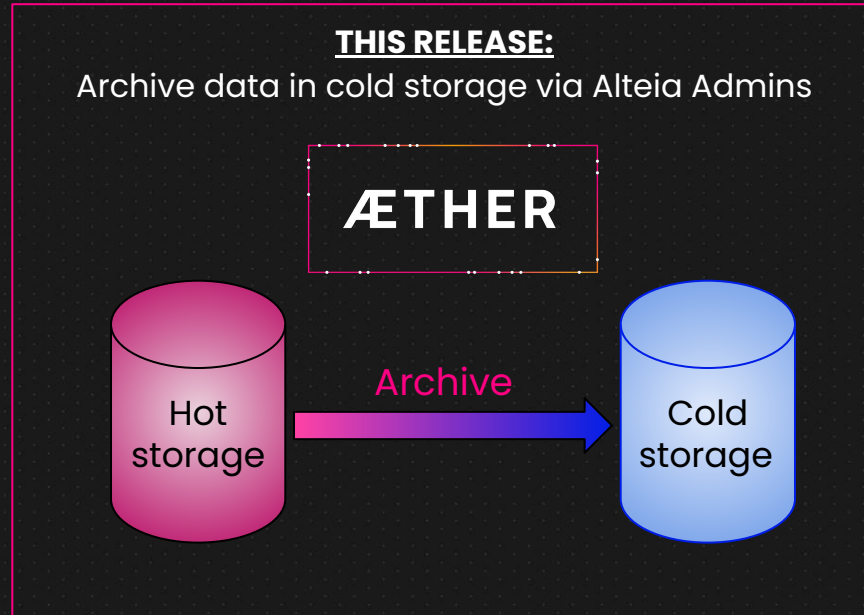
Administration – Cold Storage

With this release, **Alteia Administrators** will have the capability to archive customer data in **Cold Storage** on demand for customers.

This is a limited release that marks the **initial rollout of cold storage** features which will continue to arrive in upcoming release.

Cold Storage Benefits

- **Low cost** storage option
- More data control



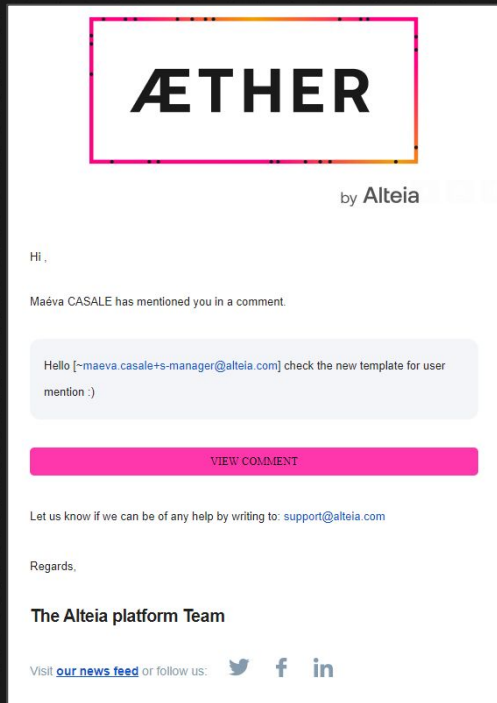
Goals for Upcoming Releases:

- *Customers to be autonomous*
- *Archival, retrieval, and deletion tools available within UI*
- *Deploy monitoring tools for storage operations*
- *Batch archiving, retrieval, and deletion via UI and SDK*

Your Sites - Annotation Notifications - Email Template Update

[Link to kb](#)

A new email template launches and will be received by the user when they're mentioned on a layer or annotation comment.

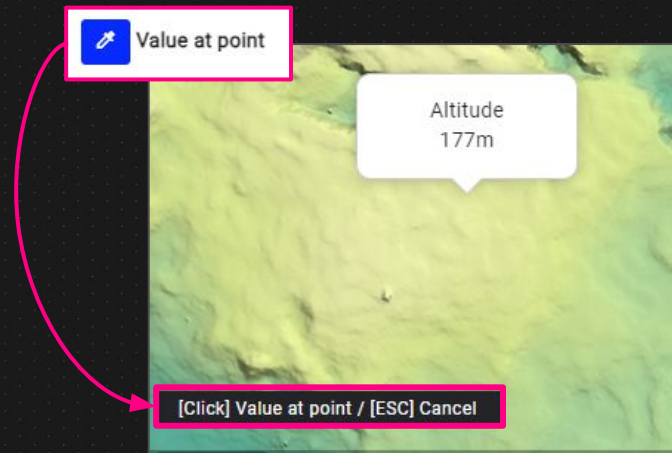


Your Sites - Value at point tool improvements

[Link to kb](#)

2D point measurement tool usability improvements

- Possibility to unselect the tool by pressing ESCAPE key or by using the info panel
- New tooltip indicating how to use the tool



Alteia.com

SUPPORT
support@alteia.com

PRESS INQUIRY
press@alteia.com

JOB OPPORTUNITIES
hr@alteia.com

EVERYTHING ELSE
contact@alteia.com

Our clients

