

The word "AETHER" is written in a bold, white, sans-serif font. It is centered within a rectangular frame. The frame is composed of a solid line that transitions from pink on the left and right sides to orange on the top and bottom sides. Small white dots are placed at regular intervals along the perimeter of the frame.

AETHER

2023.50 Release scope

Deployment date 12th-December-2023

Summary

MAIN TOPICS	MODULE
Data studio - Advanced 3D viewer	Data Studio
Data Studio - Annotation Report enables rasters export	Data Studio
Data Studio - Vectors labels improvements	Data Studio
New supported multispectral sensor	Data Studio
Aether rebranding - "Site" is now called "project"	Aether
Season planner - "Contributor" users can now access Season planner with custom role	Season Planner
Administration - Archive and retrieve datasets in/from the Cold Storage (for enterprise customers only)	Administration

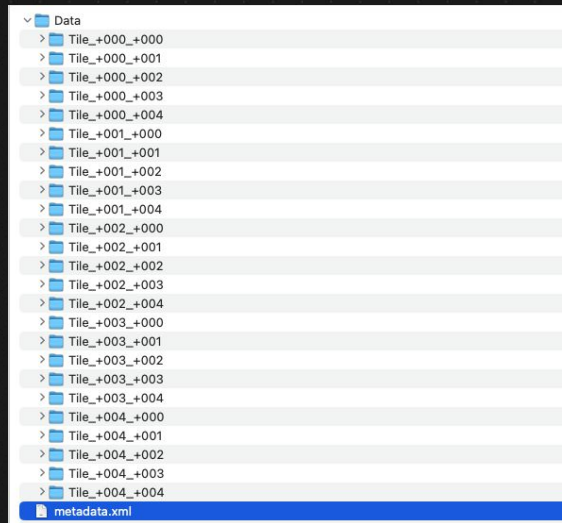
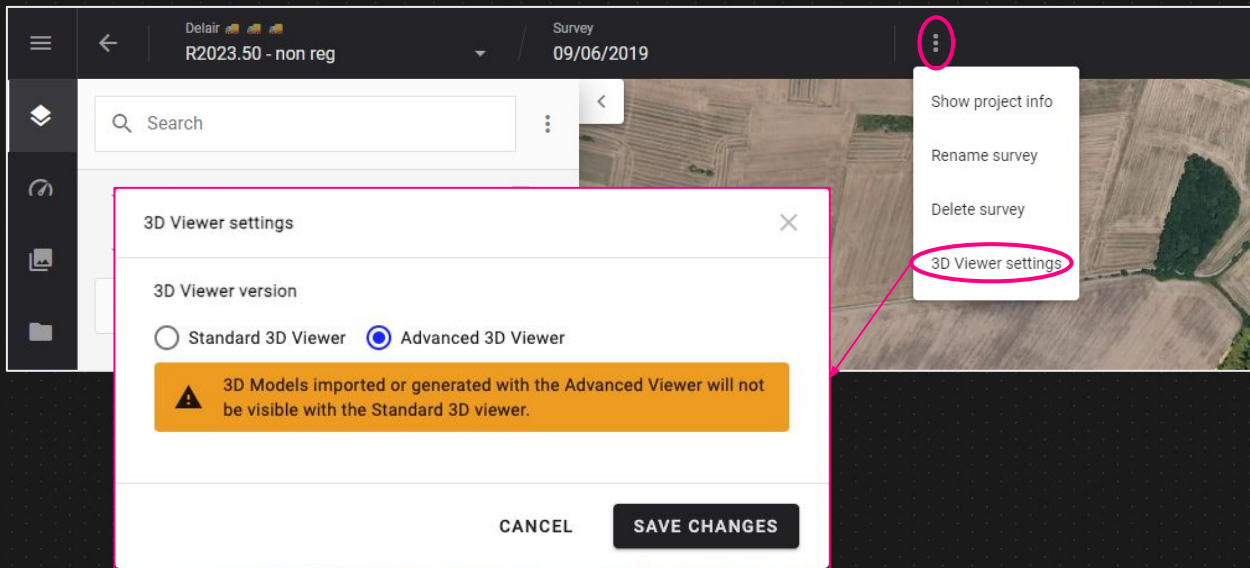
Data studio - Advanced 3D viewer major update

[Advanced 3D viewer](#)

This update includes the **point cloud support** and the **massive 3D Model support**. This is a major upgrade of Aether platform in terms of 3D capabilities and technology

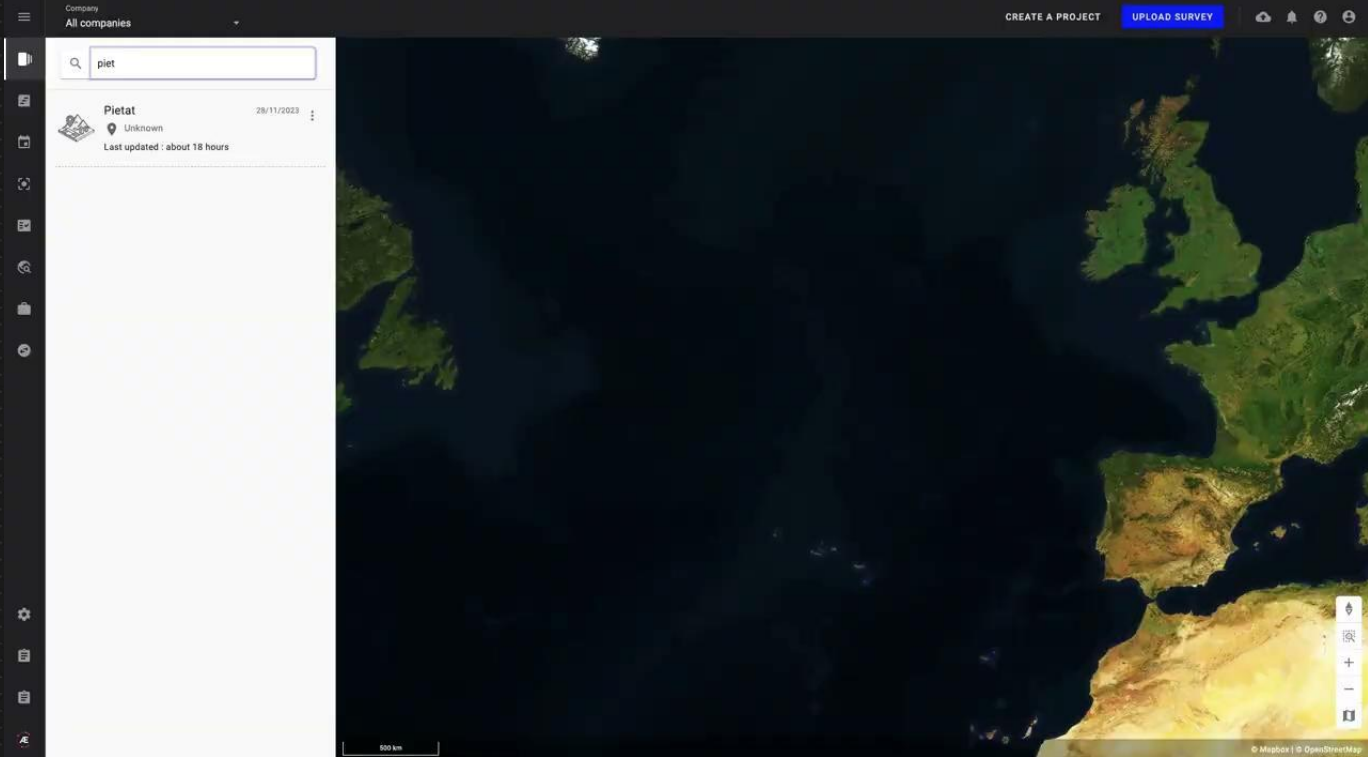
- Option to switch from standard to advanced 3D viewer easily on existing projects
- Support of tiled 3D Models (obj format only), uploaded from a zip archive

Demo on next slide



Data studio - **Advanced 3D viewer**

Massive 3D Model demo



VIDEO →
(click-on link)

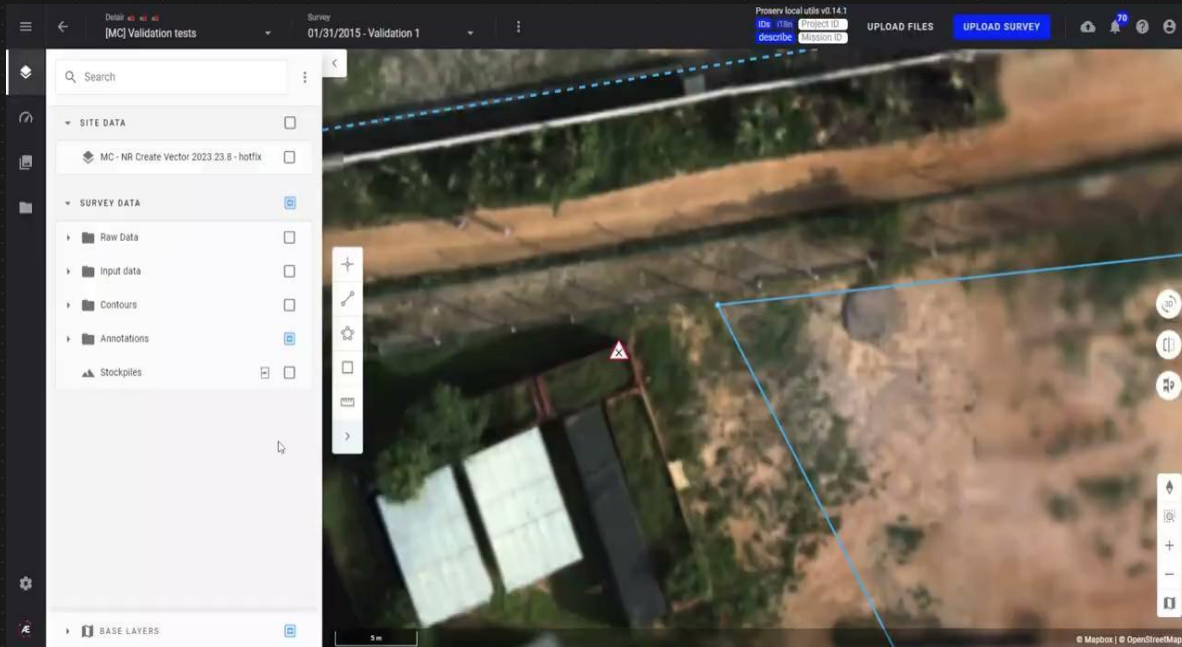
Data Studio - Rasters in Annotation Report

[Annotation report](#)

Annotation report can now include:

- any rasters in background (rasters managed by the platform such as DSM, Scouting maps...).
- annotation description

New footer with additional info such as company, project, survey names, survey date, author, and pagination.



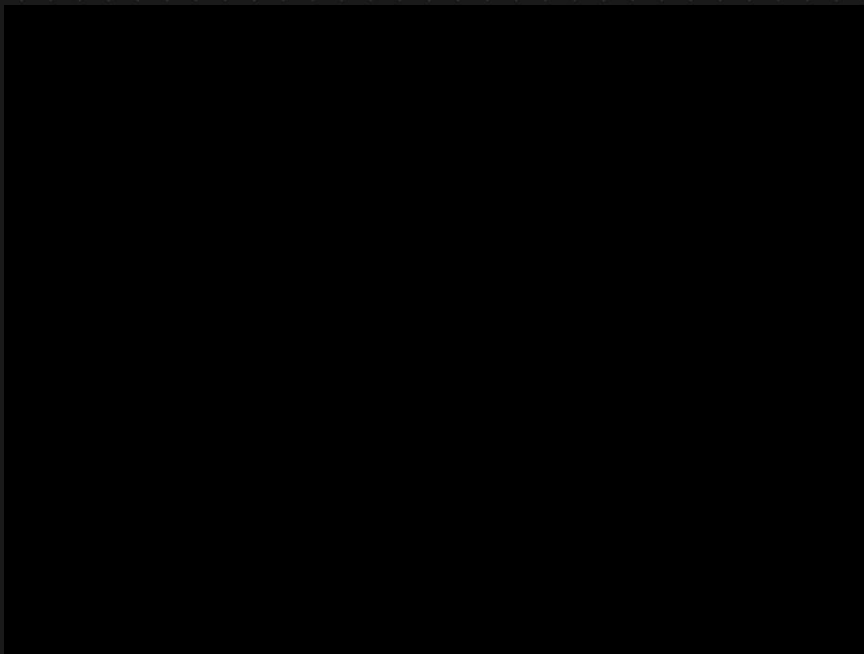
VIDEO →
(click-on link)

Data Studio - **Vectors labels improvements**

[Vector layers styling](#)

- Capability to see labels when zooming out as long as they don't overlap each other.
- Better visibility of point features by displaying their label on top instead of above the feature.
- Capability to create a style with labels only (without color scale)

VIDEO →
(click-on link)



Data Studio - **New supported multispectral sensor**

Micasense Altum-PT sensor is now supported for photogrammetry (Pix4D Engine)
Only Multispectral bands are compatible (thermal out of scope)

[Supported drones and devices](#)

[Supported sensors for photogrammetry](#)

[Compatible Sensors for Agriculture and their Settings](#)



Micasense Altum-PT

Aether rebranding – “Site” is now called “project”

In the frame of Aether rebranding activities, new wordings are applied on the platform.

A “site” is now called a “project”

The impacted modules were updated (Data Studio, Data Acquisition, Season planner, Administration).

The image displays three overlapping screenshots from the Data Studio interface, illustrating the rebranding of 'site' to 'project'. The top screenshot shows a navigation bar with buttons for 'CREATE A PROJECT' and 'UPLOAD SURVEY', and a dropdown menu for 'Project'. The middle screenshot shows a list of projects with a context menu open over one item, containing options like 'Locate on map', 'Show project info', 'Upload a survey', 'Manage project access', and 'Delete the project'. The bottom screenshot shows a 'Project Settings' panel with sections for 'Global project CRS', 'Local project CRS', and 'UNITS'.

screenshots from Data Studio showing that “site” is by replaced by “project”

Season planner – “Contributor” users can now access Season planner with a custom role

[User roles management](#)

Is it now possible to access Season planner by using a Contributor account (+a specific custom role for this module)
These users can consult Season planner resources, trials, missions, estimation methods without edition capabilities

The screenshot displays the 'Season Planner' interface for Contributors. The main content area shows a list of trials under the 'TRIALS' tab. The table has columns for year, trial name, number of capture tasks, and associated resources (DTM and Plots). The interface includes a sidebar with navigation options and a top navigation bar with tabs for TRIALS and ESTIMATIONS.

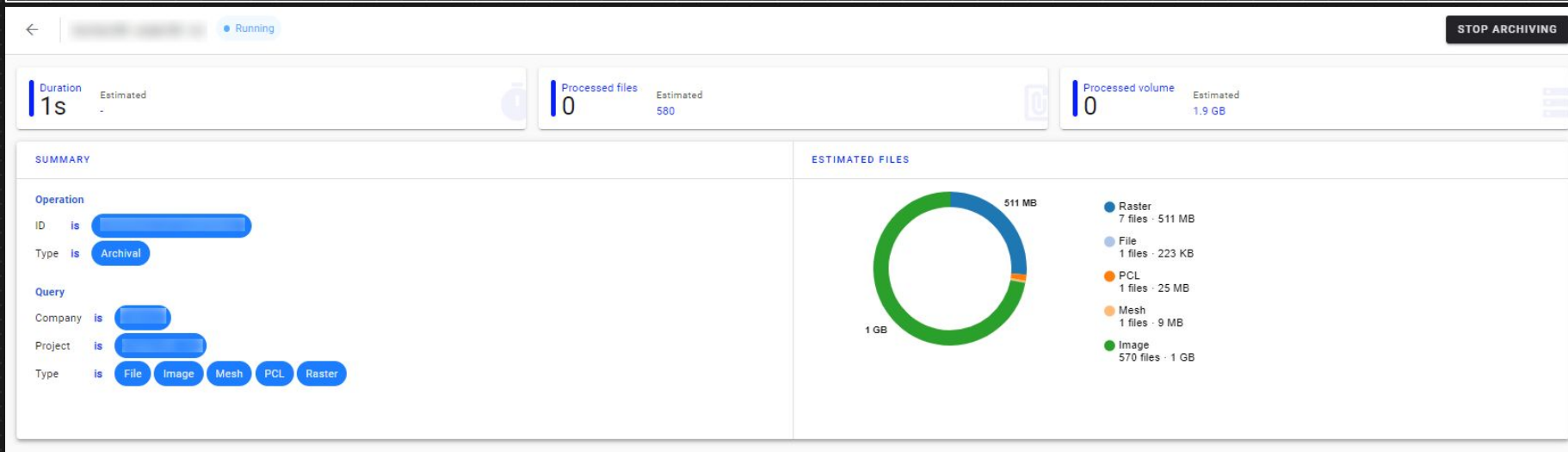
Year	Trial Name	Number of Capture Tasks	DTM	Plots
2024	[Blurred]	1 capture task	DTM	Plots
2023	[Blurred]	1 capture task	DTM	Plots
2023	[Blurred]	1 capture task	DTM	Plots
2023	[Blurred]	1 capture task	DTM	Plots
2022	[Blurred]	1 capture task	DTM	Plots
2022	[Blurred]	3 capture tasks	DTM	Plots
2022	[Blurred]	1 capture task	DTM	Plots
2021	[Blurred]	1 capture task	DTM	Plots
2021	[Blurred]	4 capture tasks	DTM	Plots
2021	[Blurred]	4 capture tasks	DTM	Plots
2021	[Blurred]	2 capture tasks	DTM	Plots
2021	[Blurred]	2 capture tasks	DTM	Plots
2021	[Blurred]	2 capture tasks	DTM	Plots
2021	[Blurred]	3 capture tasks	DTM	Plots
2021	[Blurred]	5 capture tasks	DTM	Plots
2021	[Blurred]	4 capture tasks	DTM	Plots

Season planner interface for Contributors

Administration – Archive and retrieve datasets in/from the Cold Storage (for enterprise customers only)

[Cold storage](#)

Capability to archive any data (except vectors) in the Cold Storage to optimize storage costs.
Capability to retrieve data from the Cold Storage to make them available again on the platform.
The feature is available for enterprise customers only



Example of cold storage operation

Alteia.com

SUPPORT
support@alteia.com

PRESS INQUIRY
press@alteia.com

JOB OPPORTUNITIES
hr@alteia.com

EVERYTHING ELSE
contact@alteia.com

Our clients

