

The word "AETHER" is written in a bold, white, sans-serif font. It is centered within a rectangular frame. The frame is composed of a thin line that is primarily pink, with a yellow-to-orange gradient at the top and bottom edges. Small white dots are placed at regular intervals along the perimeter of the frame.

AETHER

R2410 Release scope

Deployment date 05th-March-2024

Summary

MAIN TOPICS	MODULE
New Usage monitoring dashboard - LINK	Administration
3D Viewer - UX/UI improvements- LINK	Data Studio
3D Viewer - 3D model offset management - LINK	Data Studio
3D Viewer - Advanced 3D Viewer full deployment - LINK	Data Studio
Stockpiles module - UX/UI improvements - LINK	Data Studio

Administration | Usage monitoring dashboard | For Enterprise customer

[Link to kb article](#)

New dashboard for monitoring and exporting products (analytics) computed within a domain.

Access to the tool can be configured for existing roles or in new roles (e.g. usage supervisor) – *to be defined with the customers*

The screenshot displays the 'Usage Monitoring' dashboard. The left sidebar contains the 'Administration' menu with 'Usage Monitoring' selected. The main content area shows a table of 'Ordered products' with the following data:

Analytic	Version	Company	Project	Survey	Requester	Request date	Delivery date	State
Photogrammetry	1.4.0	[3D] - Tests	Cell tower	Ce 01		2/27/24, 11:24 AM	2/27/24, 1:16 PM	Available
Photogrammetry	1.4.0	Product - Data...	data studio - an...	Vi 05		2/26/24, 5:21 PM	2/26/24, 8:17 PM	Available
Photogrammetry	1.4.0	Product - Data...	data studio - an...	AF 06		2/26/24, 5:21 PM	2/26/24, 6:36 PM	Available
Photogrammetry	1.4.0	Product - Data...	data studio - an...	AF 06		2/26/24, 1:12 PM	2/26/24, 2:22 PM	Available
Photogrammetry	1.4.0	Product - Data...	Data Studio - An...	Vd 10		2/25/24, 8:52 PM	2/25/24, 9:12 PM	Available
Photogrammetry	1.4.0	Product - Data...	data studio - an...	Vi 05		2/23/24, 4:52 PM	2/23/24, 9:16 PM	Available
Photogrammetry	1.4.0	[3D] - Tests	R2410.2	te 02		2/23/24, 9:40 AM	2/23/24, 9:49 AM	Available
Photogrammetry	1.4.0	Product Owne...	SU_ELC1	06		2/22/24, 7:26 PM	2/22/24, 8:01 PM	Available
Photogrammetry	1.4.0	Product Owne...	Kalispell Lidar D...	01		2/22/24, 7:20 PM	2/22/24, 8:07 PM	Available
Photogrammetry	1.3.0	Proserv Test S...	Mitry-Mory	11		2/22/24, 3:26 PM	2/22/24, 4:21 PM	Available

The dashboard includes a 'FILTERS' button, a 'Sort by last requested' dropdown, an 'Analytic: 1 filter' indicator, and an 'EXPORT PRODUCTS' button. The 'CLEAR ALL' button is also present. The bottom of the table shows 'Items per page: 10' and '1 - 10 of 224'.

Administration | Usage monitoring dashboard | For Enterprise customer

[Link to kb article](#)

The analytic detail page allows you to access the related survey or project and to consult metrics (computed pixels for photogrammetry)

Photogrammetry@1.4.0 ● Available

ANALYTIC		ORDER	
Nom	Photogrammetry	Requester	<input type="text"/>
Version	1.4.0	Request date	02/20/2024
		State	● Available
		Delivery date	02/20/2024

CONTEXT	
Company	Team 3D
Project	Ventaron
Survey	02/07/2024 - Test Goeid

Shortcut to the survey ➤ OPEN

METRICS	
Pixel count	12,281,955,840
Number of pixels processed	

Note : this info has also been added on the Task Manager menu.

Pixel count

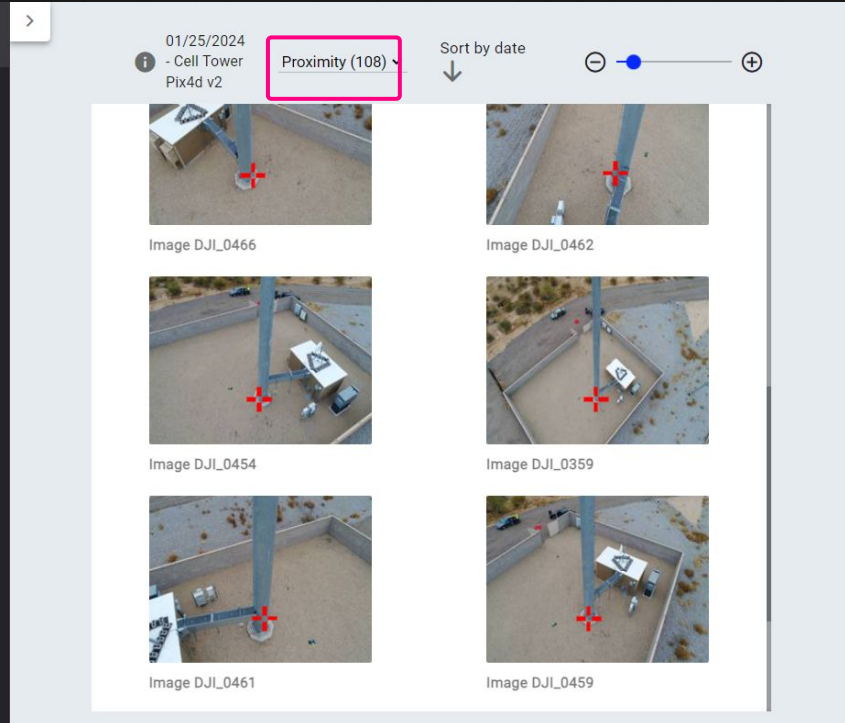
Data Studio | 3D Viewer - Proximity filter

- Filter image gallery based on a 3D position (from double click in 3D)
- Project a 3D position (red cross) on related images (from double click in 3D)

Compatible with **new (after R2410)** and **old pix4D photogrammetry** outputs

[Link to kb article](#)

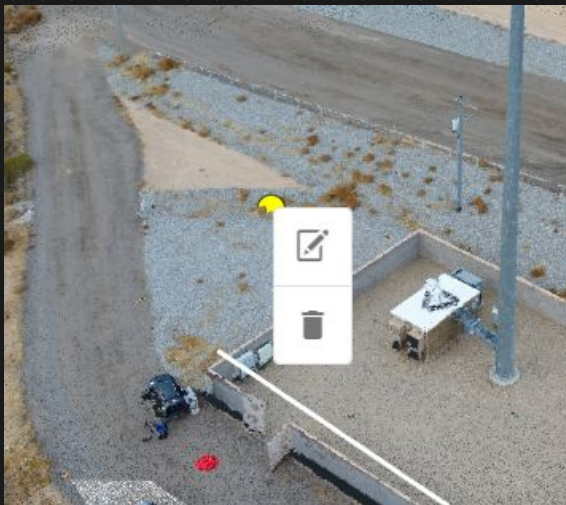
Compatible with **new (after R2410) metashape** photogrammetry outputs **only**



Data Studio | 3D Viewer - Annotation improvements

[Link to kb article](#)

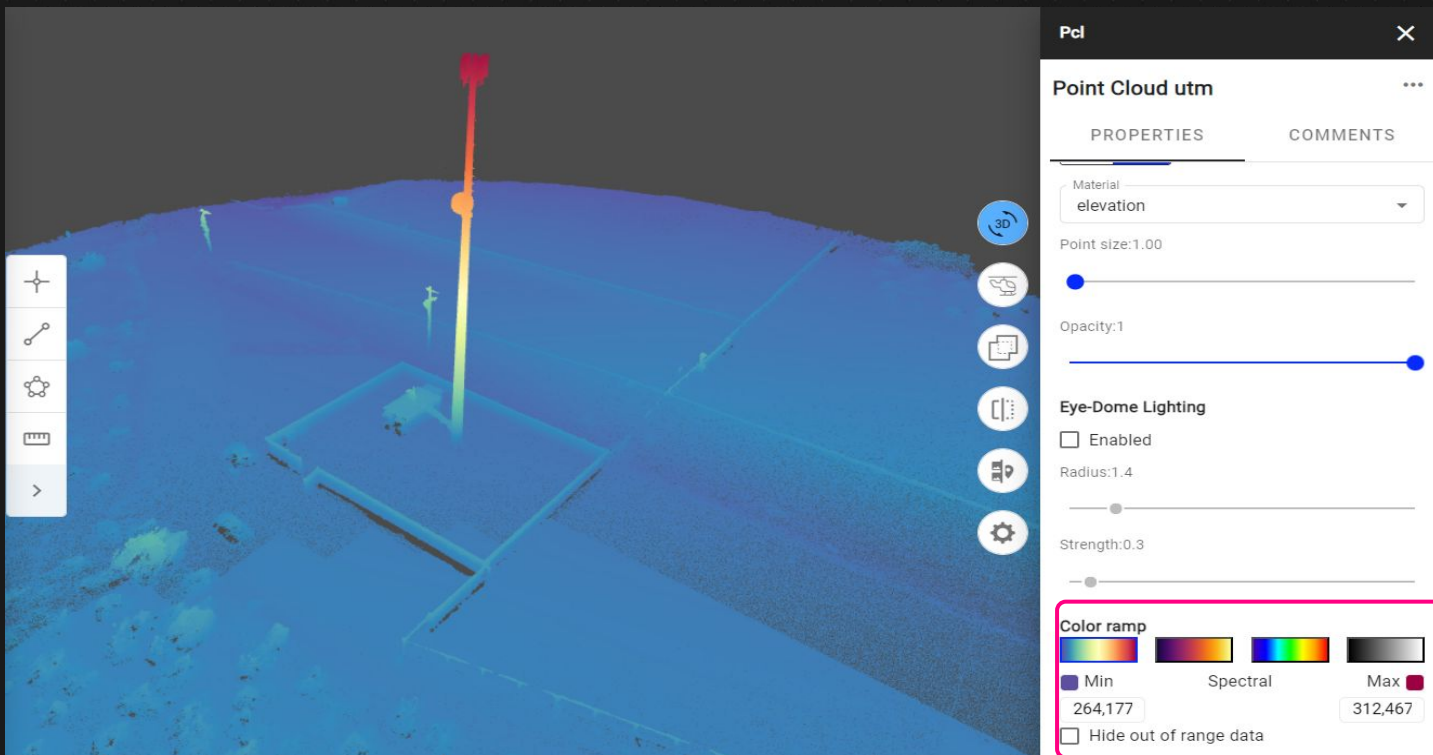
- **Shape edition:** Annotation shape can now be edited (“right click” and “edit” button)
- **Improved annotation visibility:** lines and polygons are now displayed above the model and points have a fixed size regardless of the zoom level.
- **Consistent behavior between 3D and 2D:** the annotation creation tool is disabled once an annotation is created (like in 2D).



Data Studio | 3D Viewer - Point Cloud styling

[Link to kb article](#)

A color ramp for point clouds can now be selected and displayed for a given attribute.



The image displays a 3D viewer interface with a point cloud visualization on the left and a settings panel on the right. The point cloud is rendered in a color gradient, with a prominent vertical structure colored in red and orange, and the surrounding ground plane in shades of blue and green. The settings panel, titled "Pcl", shows the "Point Cloud utm" configuration. The "Material" is set to "elevation". The "Point size" is 1.00, and the "Opacity" is 1. The "Eye-Dome Lighting" is disabled, with a radius of 1.4 and a strength of 0.3. The "Color ramp" section is highlighted with a pink border and shows a color gradient from blue to red, with "Min" set to 264,177 and "Max" set to 312,467. The "Spectral" and "Min" options are selected, and the "Hide out of range data" checkbox is unchecked.

Pcl ✕

Point Cloud utm ⋮

PROPERTIES COMMENTS

Material: elevation

Point size: 1.00

Opacity: 1

Eye-Dome Lighting

Enabled

Radius: 1.4

Strength: 0.3

Color ramp

Min Spectral Max

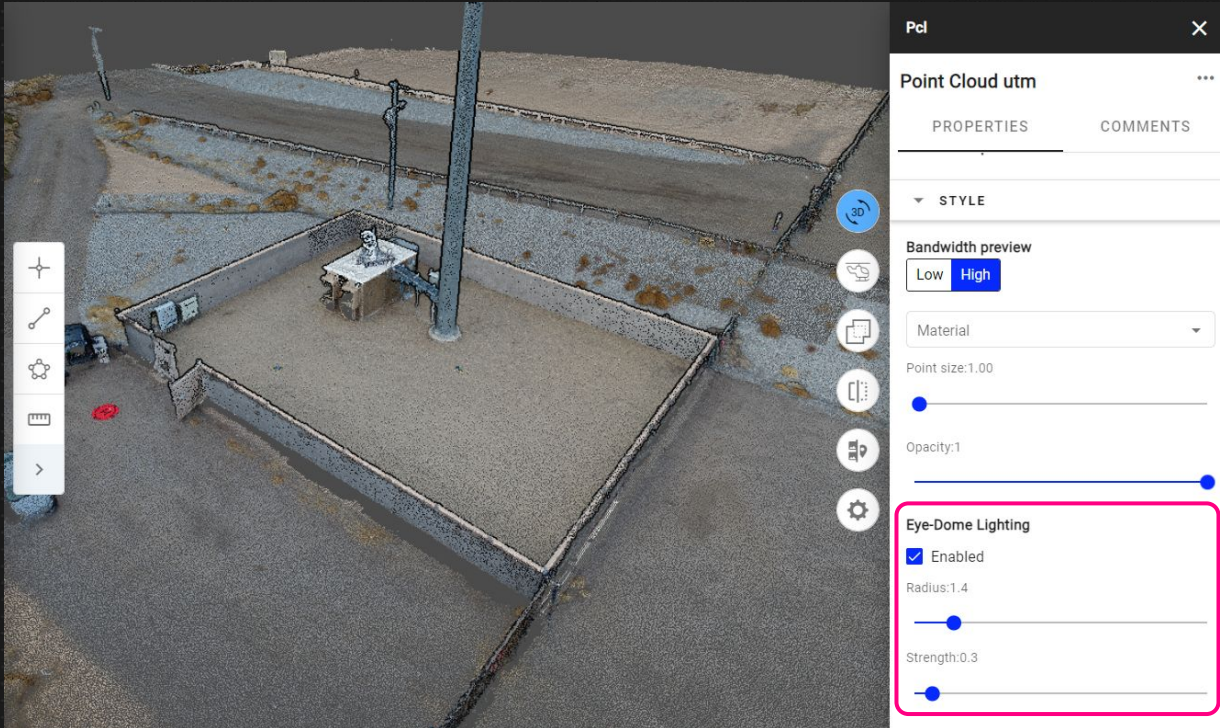
264,177 312,467

Hide out of range data

Data Studio | 3D Viewer - Eye Dome Lighting

[Link to kb article](#)

Eye Dome Lighting is now available for Point Cloud on the advanced 3D-viewer.



Data Studio | 3D Viewer - 3D model offset management

[Link to kb article](#)

Offset of imported mesh files can now be specified on upload

This offset is required if the mesh you are uploading was created using a coordinate system centered on the model.

It represents the offset between this coordinate system and the geographic coordinate system of the project.

It's an output of the photogrammetry tool that was used to generate the mesh.

Upload a file

Dataset properties

Name*
model

Type*
Mesh

Category

Warning: This file type can contain a Coordinates Reference System, please fill the associated field only if there is no Coordinate Reference System in your file.

Global Coordinate Reference System (CRS) APPLY PROJECT CRS

Horizontal CRS (x, y)

Vertical CRS (z)

Mesh coordinate offset ⓘ

X*	Y*	Z*
0	0	0

Published

< BACK CANCEL UPLOAD

Data Studio | 3D Viewer – Advanced 3D Viewer full deployment

[Link to kb article](#)

3D-advanced viewer selected by default

PROJECT PROPERTIES

Attach to company

Select company
Wldemo management

Name

Type a name *
DEMO

Accessible to all users of the company ⓘ

Project CRS (Coordinate Reference System)

Optional: you can add them later in the Project Settings.

DEFINE GLOBAL CRS

DEFINE LOCAL CRS

3D Viewer

Advanced 3D Viewer
This viewer improves rendering speed and visualization of 3D models (meshes)

Standard 3D Viewer
Standard 3D Viewer for Aether platform

CREATE PROJECT

- All new projects are now created with the “Advanced 3D Viewer” selected by default
 - All existing data sets remain visible in the Advanced 3D viewer
 - All features from Standard viewer are now implemented in Advanced 3D viewer
 - It’s still possible to come back to Standard viewer through the option “3D viewer” settings at the project level.

Data Studio | Stockpiles module - UX/UI improvements

[Link to kb article](#)

The stockpiles material type, volume and weight are now displayed when hovering the stockpiles
The stockpile names or material types can be displayed as labels



Data Studio | Stockpiles module - UX/UI improvements

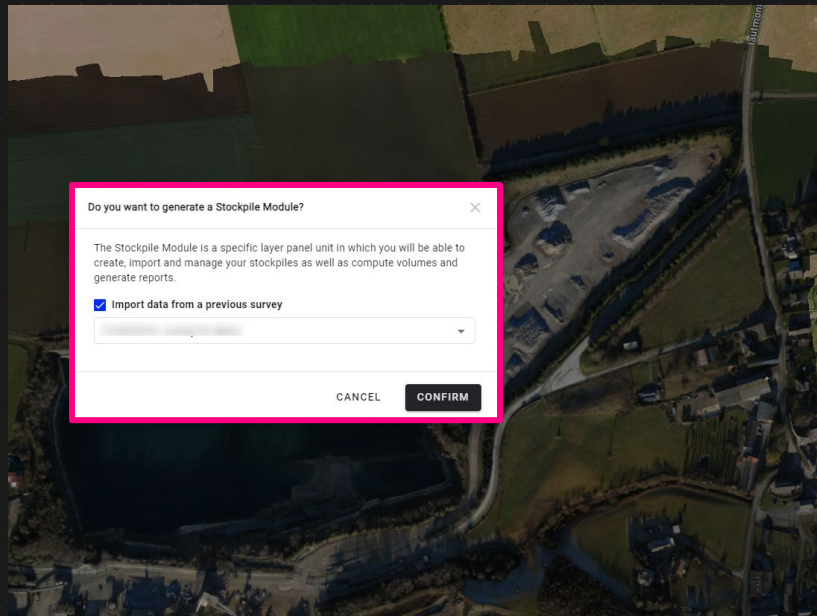
[Link to kb article](#)

It is now possible to set a material type on several stockpiles at a time



Data Studio | Stockpiles module - UX/UI improvements

It is now possible to import stockpiles from a previous survey into another one, when activating the Stockpile Module



Alteia.com

SUPPORT
support@alteia.com

PRESS INQUIRY
press@alteia.com

JOB OPPORTUNITIES
hr@alteia.com

EVERYTHING ELSE
contact@alteia.com

Our clients

