



R.2438 – Release Notes

Deployment September 17th, 2024

Summary



MAIN TOPICS	MODULE
Proximity filter from an annotation - LINK	Data Studio - 3D mode
Thermal photogrammetry - LINK	Data Studio
Other improvements - LINK	All

3D Viewer – Proximity filter from an annotation

CONTEXT

Use case: Visualize all images where a defect has been identified in 3D.

Target Audience: asset inspection users

PROBLEM SOLVED

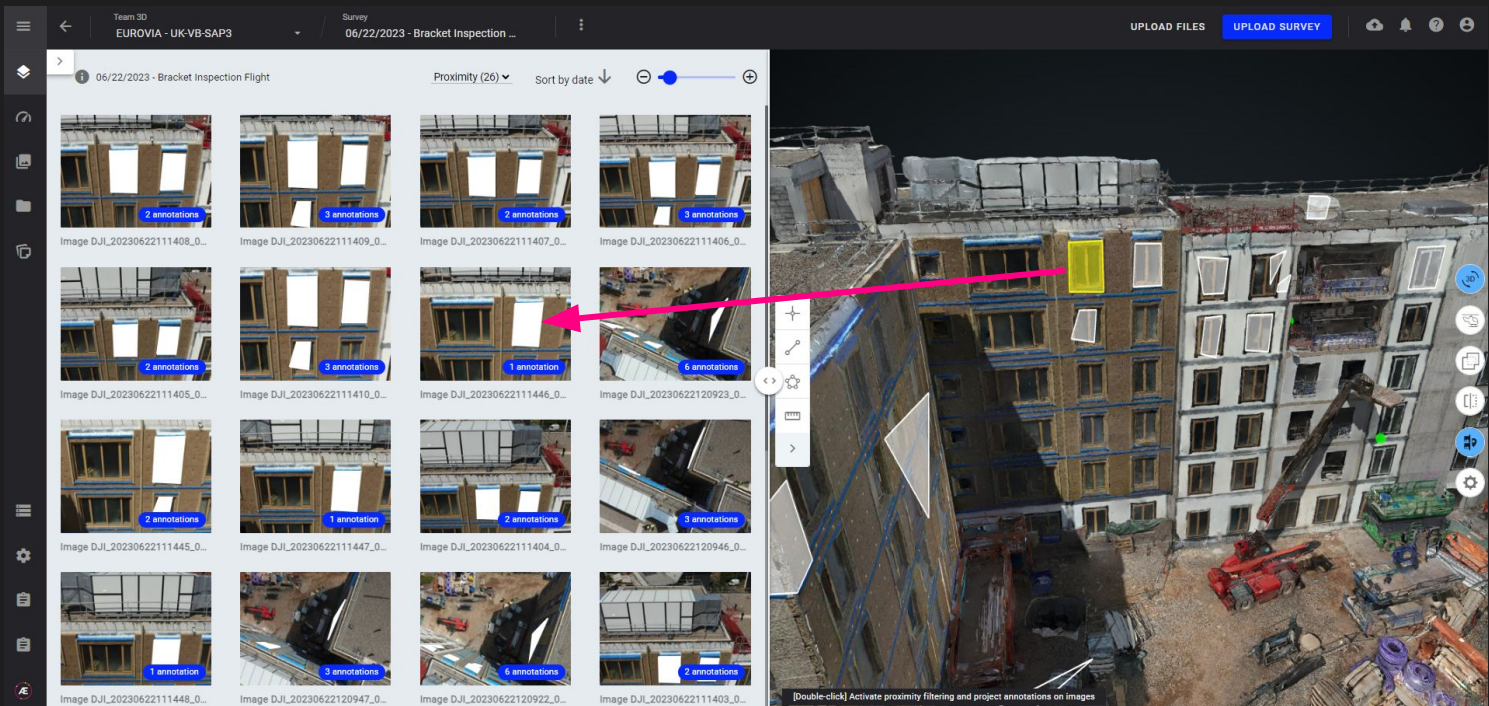
3D models are very useful to contextualize all defects during an asset inspection.

However, users may need to inspect details on the related raw images and need a way to quickly access all the images that show the defect.

That's now possible thanks to the "proximity filter" from an annotation.

3D Viewer | Proximity filter from an annotation

To activate proximity filter from an annotation, open the "split view", and double click on an annotation. It filters the gallery and show only images where the selected annotation is fully visible.



Analytics – Thermal photogrammetry

CONTEXT

Use case: Launch thermal photogrammetry to detect defects on solar panels.

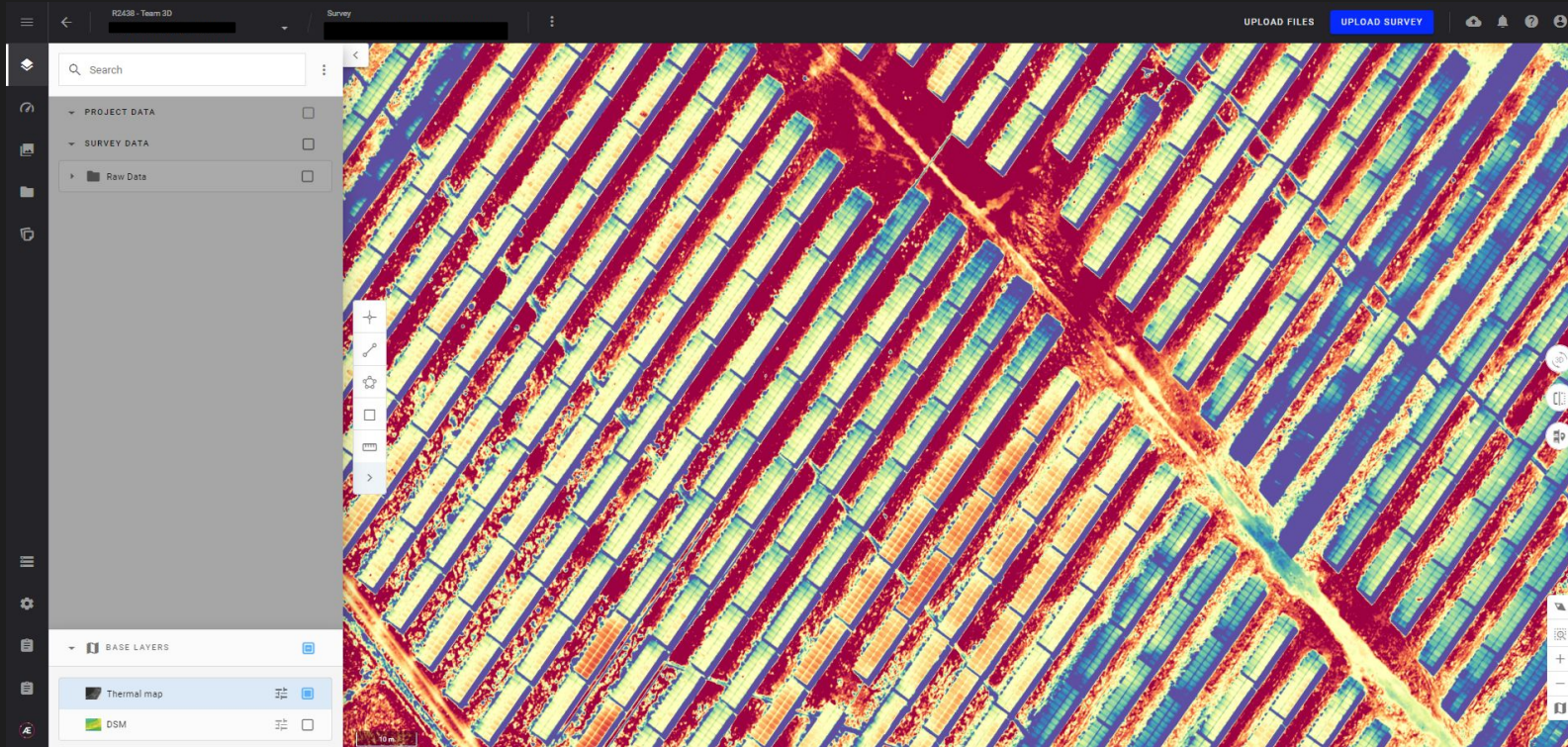
Target Audience: solar plant maintenance staff

PROBLEM SOLVED

Produce a thermal map from thermal images taken by DJI thermal sensor.

Analytics | Thermal photogrammetry

To launch a thermal photogrammetry, select the “photogrammetry” analytic on a survey with thermal images. 3 specific parameters are needed: distance, humidity and emissivity. The outputs are a thermal map and a DSM.



Analytics - Thermal photogrammetry

CURRENT LIMITATIONS

- Only working for DJI thermal sensors compatible with DJI Thermal SDK
- Photogrammetry engine: Metashape only.

NEXT STEPS

N/A

DEPLOYMENT

The photogrammetry analytic shall be available on the company.

Other improvements

Photogrammetry

Ground Control Points: the system now automatically detects coordinates in degrees and in this case applies the CRS in WGS 84 by default.

Photogrammetry report: Addition of the processing date on top of the report.

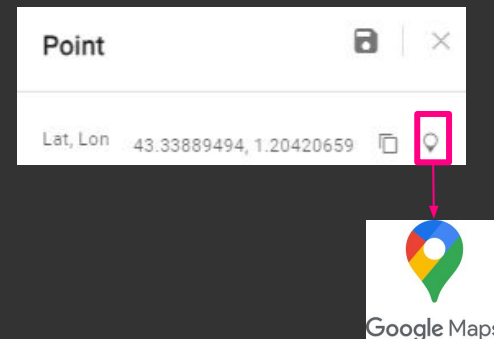
Photogrammetry update for sensors M3M (RGB) / M3E / Zenmuse P1

These sensors are now supported for Pix4D mapper without any pre-processing (no need to delete EXIF anymore).

For these sensors, the "roll" is forced to "0" to avoid outliers.

Measure tool and google Maps

Users can access to a google maps location from a point measure



Alteia.com

SUPPORT
support@alteia.com

PRESS INQUIRY
press@alteia.com

JOB OPPORTUNITIES
hr@alteia.com

EVERYTHING ELSE
contact@alteia.com

Our clients

