

# Alteia

R2022.47

R2022.47- Deployment on November 22, 2022

Alteia 2022

**Impacted User Experience  
& Visible Changes**

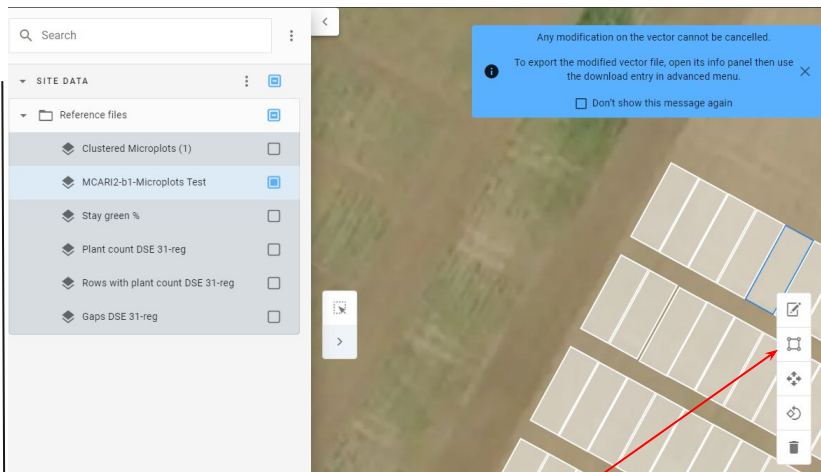
# Vector Editing

3

Industry: All

Module: Your Sites

- **Change feature dimensions** (one or several features)  
The width and height of a shape can be specified using input values.
  - For rectangles only, the dimensions will keep the shape and all selected rectangles will take the exact dimension specified.
  - For any other shape (not rectangular), the resizing will be done on the theoretical “bounding box” around all the shapes.
  - If there's several shapes selected, input fields will be empty.



Impacted user experience and visible changes

R2022.47

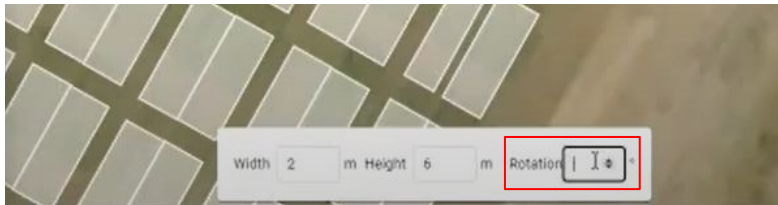
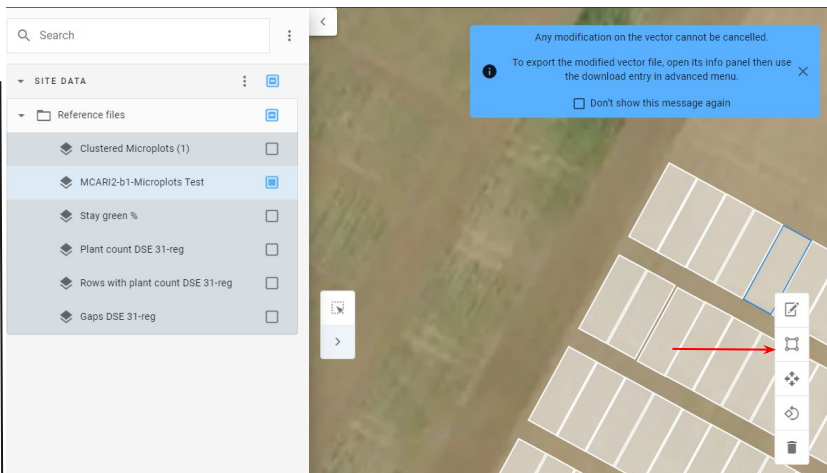
Alteia - 2022

# Vector Editing

Industry: All

Module: Your Sites

- **Change feature rotation** (one or several features)  
The rotation can now be done by specifying an input value.
  - By default, the input value is empty
  - The degrees that are indicated will add an offset to the initial rotation (ie the degrees selected are not based on the real orientation)
  - The value added by the user will add an offset to any rotation that is already existing



Impacted user experience and visible changes

R2022.47

Alteia - 2022

## Microplot Designer Tool

# Microplot Designer Analytic

Industry: Agriculture & Forestry

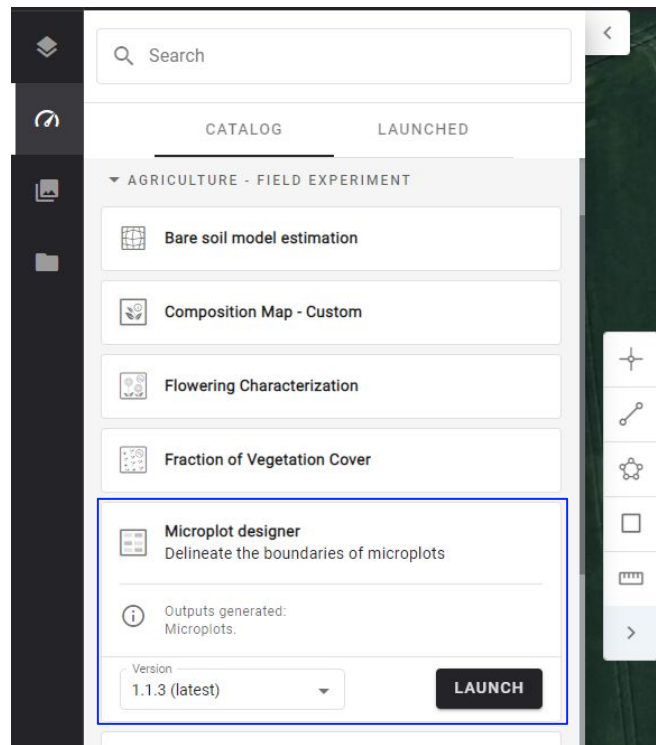
Module: Your Sites

- Two attributes were renamed:
  - `block_plot_id` will be: **`md_plot_id`**
  - `parent_id` will be: **`md_trial_id`**

md stands for **m**icroplot **d**esigner to indicate that the microplot vector comes from the Microplot Designer (and not imported)

/!\ This modification may have an impact on the APIs used to extract files containing these attributes

*\*No migration initiated, previously generated layers shall keep the old names*



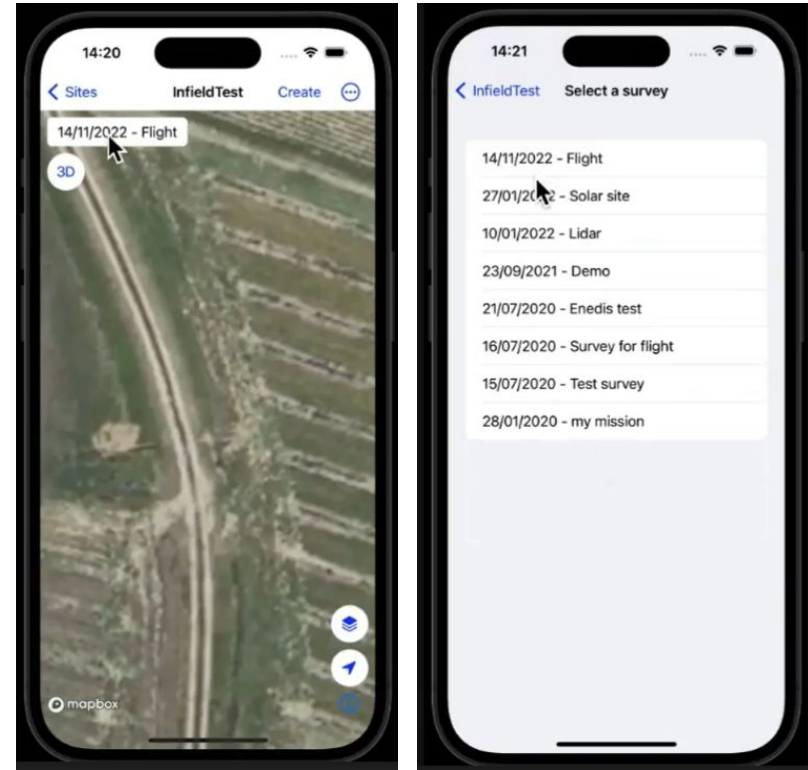
**InField iOS Mobile app**

## Surveys and Survey Dates

Industry: All

Module: iOS Mobile App

- A dedicated “surveys” button has been developed
  - Click to view all surveys for a given site
- The survey data for each survey is now taken from the device settings
  - This allows for the user to view dates in the regionally preferred format





# Layer Management

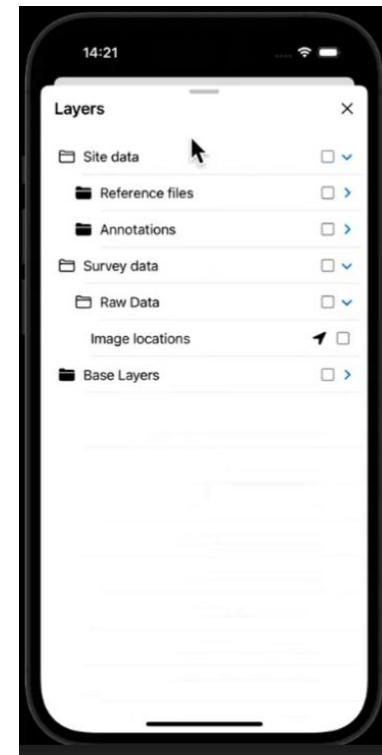
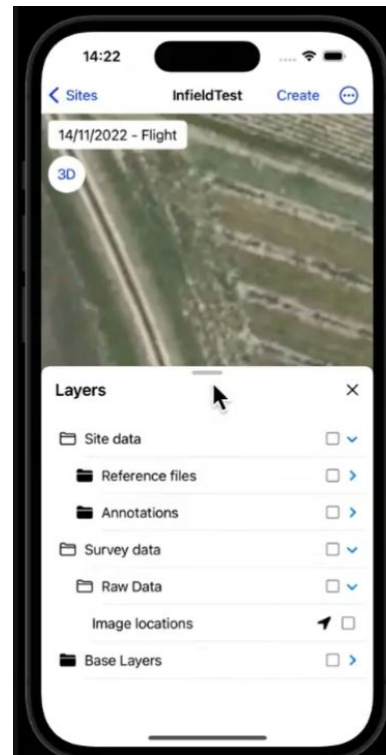
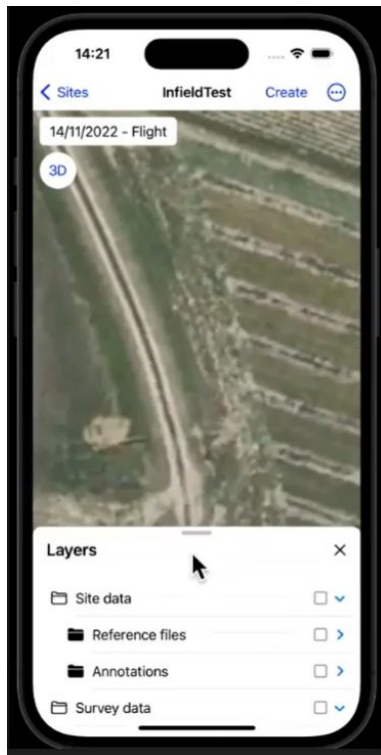
9

Industry: All

Module: iOS Mobile App

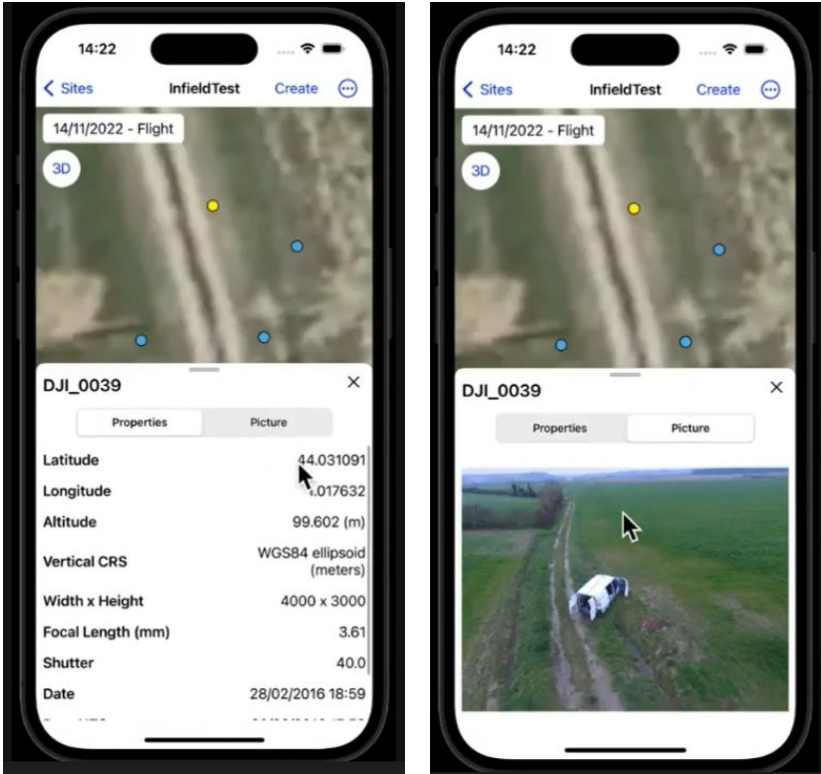
## New Layer Panel

- The layers button now launches the layer panel from the bottom of the screen
- Layer panel can be resized to full screen for improved layer management
- Layer panel can be cleared or hidden with a swipe down gesture



Industry: All  
Module: iOS Mobile App

- The user can visualize all flight layers
- Clicking on an image location allows the user to view image properties as well as the image
- Clicking on a GCP allows the user to view the target location details



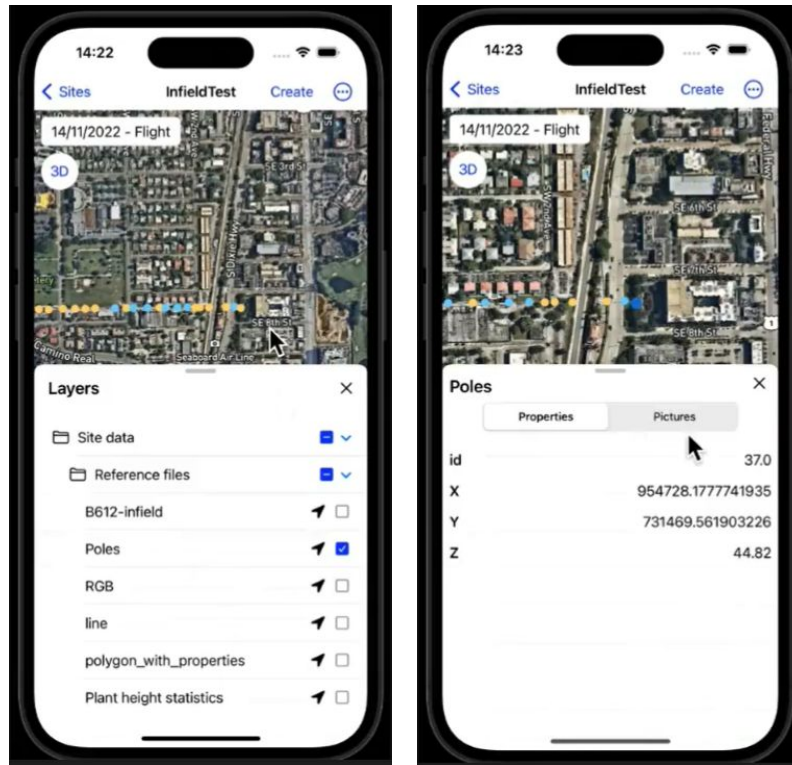
## Vector Viewing

Industry: All

Module: iOS Mobile App

Vector Viewing Improvement:

- Vector styles will match the web platform
- Properties can be viewed for any vector feature by clicking on the feature
- Associated images can be viewed by clicking on the “Pictures” sub category
- For now, feature layer legend is not visible due to screen size constraints



**Data Capture  
& Season Planner**

## Data Capture - Review of Naming Structure

### Industry: Agriculture & Forestry

#### Module: Data capture

- When creating a survey from a mission **generated by the Season planner**, the survey name is now the following by default:

→ **mission name - sensor type [SPL] [CT]**

- When creating a survey from a capture task generated in the **Data Capture directly**, the survey name is now the following by default:

→ **mission name [CT]**

Old Tasks and Surveys created before the release keep their name

SPL: means **Season PLanner**

CT: means **Capture Task**

The screenshot shows a dialog box titled "Create a new survey" with a close button (X) in the top right corner. It contains two input fields: "Name" and "Date (UTC) \*". The "Name" field contains the text "Demo - ms [SPL] [CT]" and the "Date (UTC) \*" field contains "11/18/2022". At the bottom right, there are two buttons: "CANCEL" and "OK". An arrow points from the text "mission name - sensor type [SPL] [CT]" to the "Name" field.

The screenshot shows a dialog box titled "Create a new survey" with a close button (X) in the top right corner. It contains two input fields: "Name" and "Date (UTC) \*". The "Name" field contains the text "Demo [CT]" and the "Date (UTC) \*" field contains "11/18/2022". At the bottom right, there are two buttons: "CANCEL" and "OK". An arrow points from the text "mission name [CT]" to the "Name" field.

**Bug Fixes**

## Bug Fixes

### Season Planner

- In the trial dashboard, it is possible to filter trials on years by clicking in the calendar icon. However when setting the year manually (as text form e.g. “2023”), then the filter was not applied.
  - It is now possible to filter on the year using either the calendar or manual values.
- In the assets dashboard, when switching the tabs (e.g. from assets to crops), the default sorting was not properly applied (e.g. “Sort by name”).
  - This behavior has been corrected.
- When refreshing estimation methods (in details or edition), some field contents could become cleared.
  - This behavior has been corrected.

### Season Planner Cont'd

- The column headers of the Bands tab (of an estimation method details page), was not properly displayed (some keys may be displayed instead of the expected text).
  - This behavior has been corrected.

### Data Capture

- Tasks were not displayed properly in calendar view, by month.
  - This behavior has been corrected.

# Alteia

|  |  |  |  |
|--|--|--|--|
| SUPPORT  | PRESS INQUIRY  | SALES  | EVERYTHING ELSE  |
| <a href="mailto:support@alteia.com">support@alteia.com</a> | <a href="mailto:press@alteia.com">press@alteia.com</a> | <a href="mailto:sales@alteia.com">sales@alteia.com</a> | <a href="mailto:contact@alteia.com">contact@alteia.com</a> |