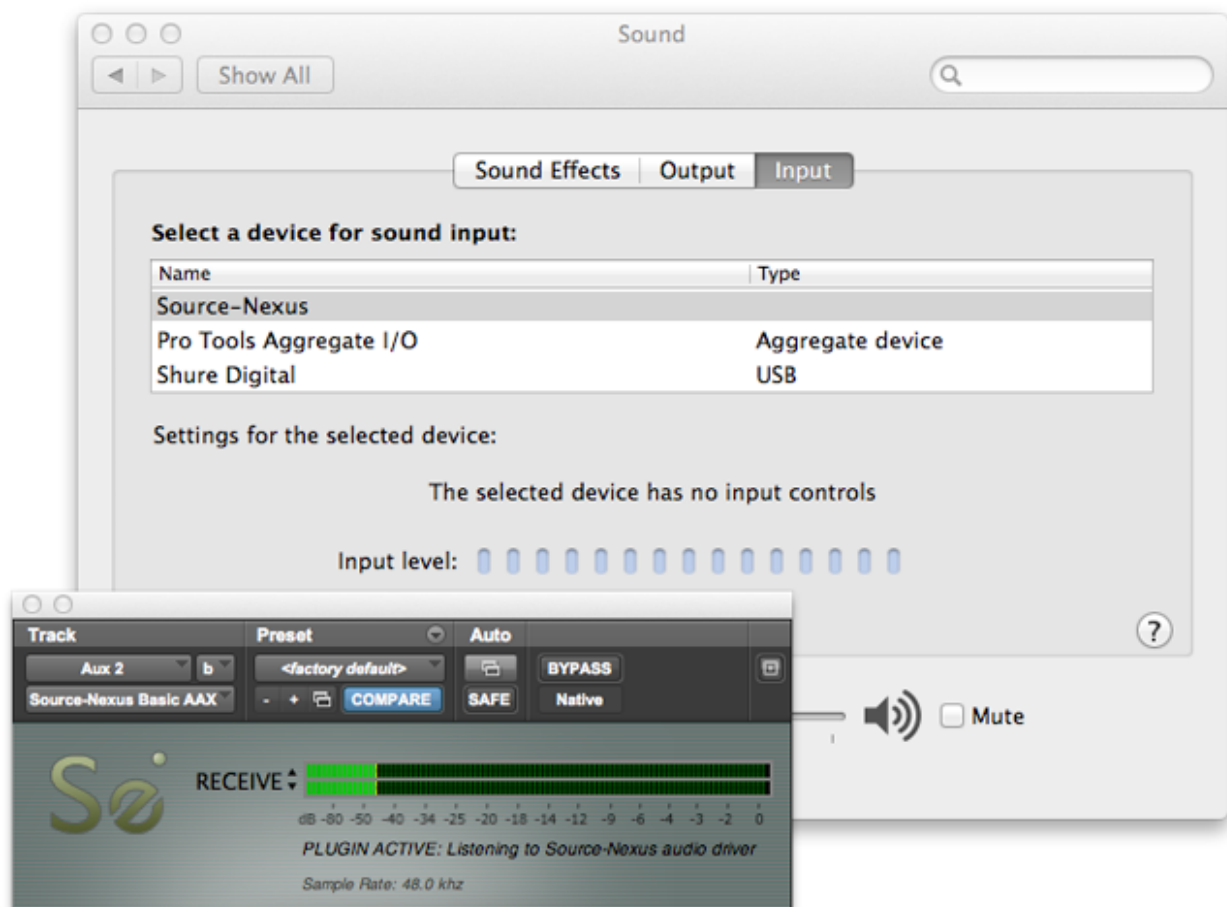


# Source-Nexus Basic 1.1 User Guide



# 1. Introducing Source–Nexus Basic 1.1

Source–Nexus Basic is an audio application router for AAX, VST and Audio Units hosts: Record remote voiceover from Source–Connect directly in Final Cut or Media Composer, playback iTunes to Pro Tools, even patch Pro Tools to and from Nuendo, Logic, Reaper and more. All at the same time!

The possibilities are endless: opens an entire new world for application integration with Pro audio users and their studio environment.

You can now "patch in" any software such as phone applications, metering, encoders, decoders, external processors, other audio workstations, video editors, even a browser web page!

Supports any CoreAudio application that can send or receive audio on channels one or two of your selected audio device, such as iTunes or QuickTime, or Advanced audio applications where you can specify your channel I/O to send/receive on the first two channels.

## 2. System compatibility

Requires OSX 10.6 or higher.

Compatible with Pro Tools 10 32-bit and 11/12 64-bit AAX.

Compatible with many VST 64-bit DAW (see exception list)

Compatible with many AudioUnits 64-bit DAW (see exception list)

### 3. Why do I need Source–Nexus?

Source–Nexus allows you to directly integrate any application that sends audio out channels one and/or two without using external cables using the AAX/VST and AU plug–ins, and allows all CoreAudio audio applications to record and be recorded from your timeline.

VO artists: Allows you to consolidate all your external apps into one clean template where everything you need is a button push or mouse click away.

Post production: Anyone looking to set up an integrated template where various applications feed in and out of your DAW like a cable free virtual studio within their computer. Makes setups cleaner, simpler, less expensive and more mobile.

### 4. Getting Started

For basic use, to get audio into your DAW from with the application whose audio you wish to send, you will configure the Audio out to use Source–Nexus. To receive that application’s audio in your DAW simply put the Source–Nexus plug–in on an Auxiliary–type track and select whether you wish to Send or Receive audio.

If your application doesn't allow you to set the device, like iTunes or QuickTime, set your System Preferences to use Source–Nexus for the output and monitor in Pro Tools.

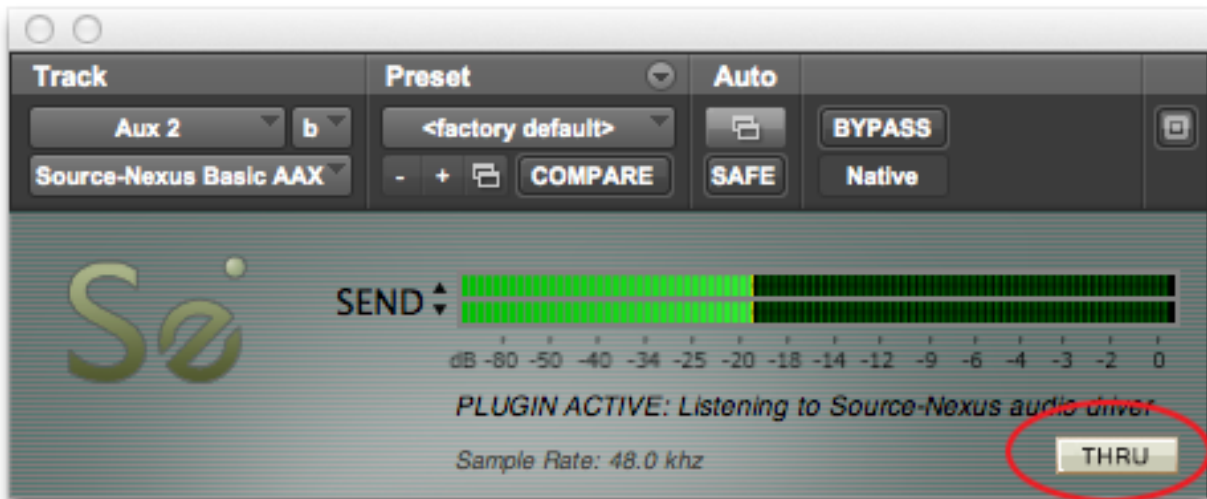
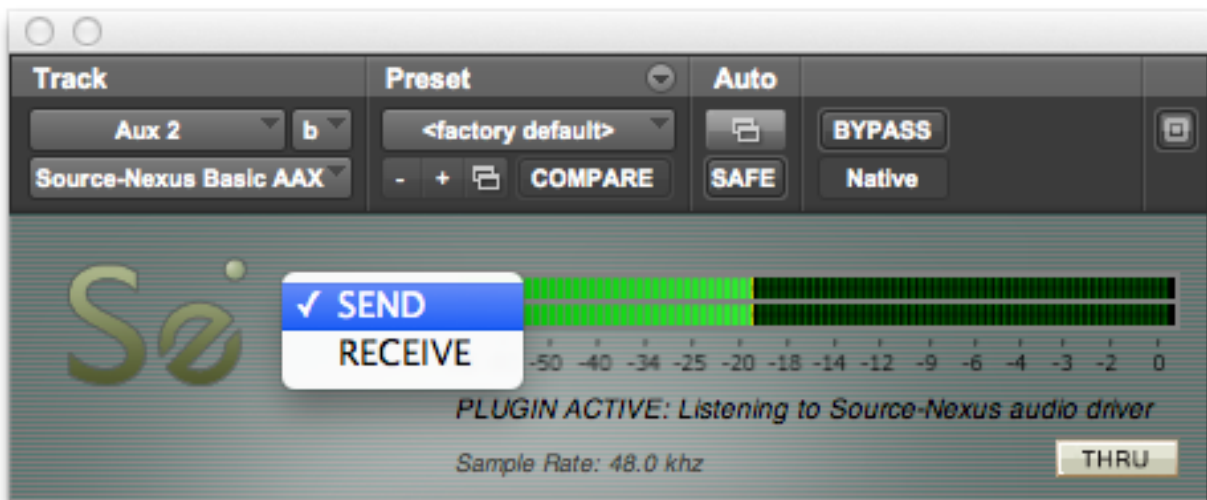
If your application doesn't allow you to set the output, set your System Preferences to use Source–Nexus for the output so you can monitor and record in your DAW.

Make sure that you don’t route signal into itself: you **must not** set the input and output of your Application to be Source–Nexus (see Pro options for more flexibility).

## 5. Basic routing

Source-Nexus has two modes: Send and Receive. If you wish to send a signal from your DAW to another Application, select Send. If you wish to receive a signal from another Application to your DAW, select Receive.

You also have the 'THRU' option on Send, so you can put this on your Master Fader.



See the next section on Example Workflows for ideas and concepts.

## 6. Example workflows

The following examples should guide you towards using Source-Nexus Basic with all compatible applications. If you're not sure, send an email to Support with information about what you are trying to achieve so we can advise you.

6.1 Source-Connect Pro and Pro Tools

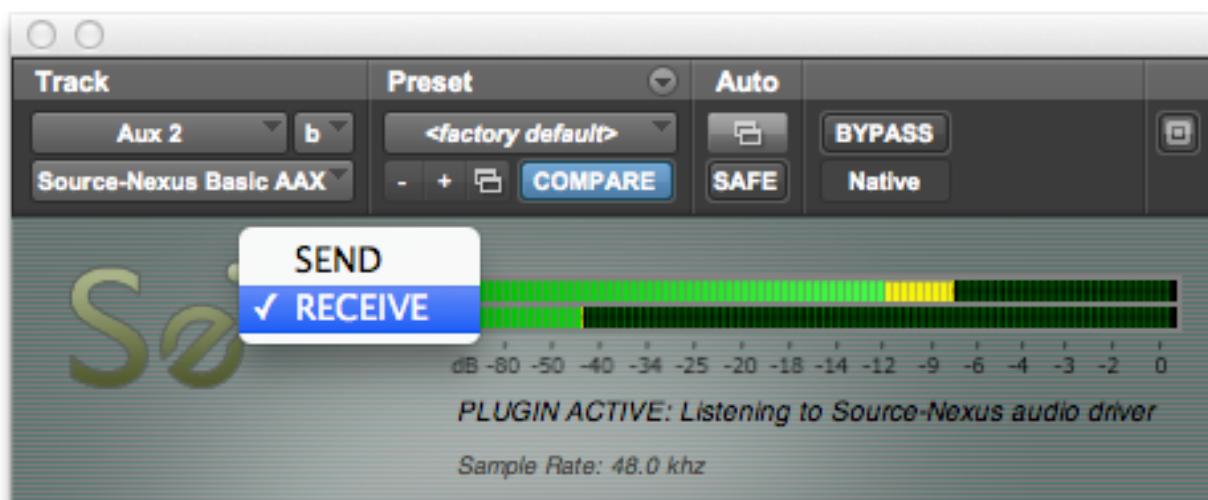
6.2 Chrome / Source-Connect Now and Pro Tools

6.3 Record from any application into Pro Tools using System Audio

6.4 Record from Source-Connect to Final Cut Pro X

6.5 Recording out of Pro Tools

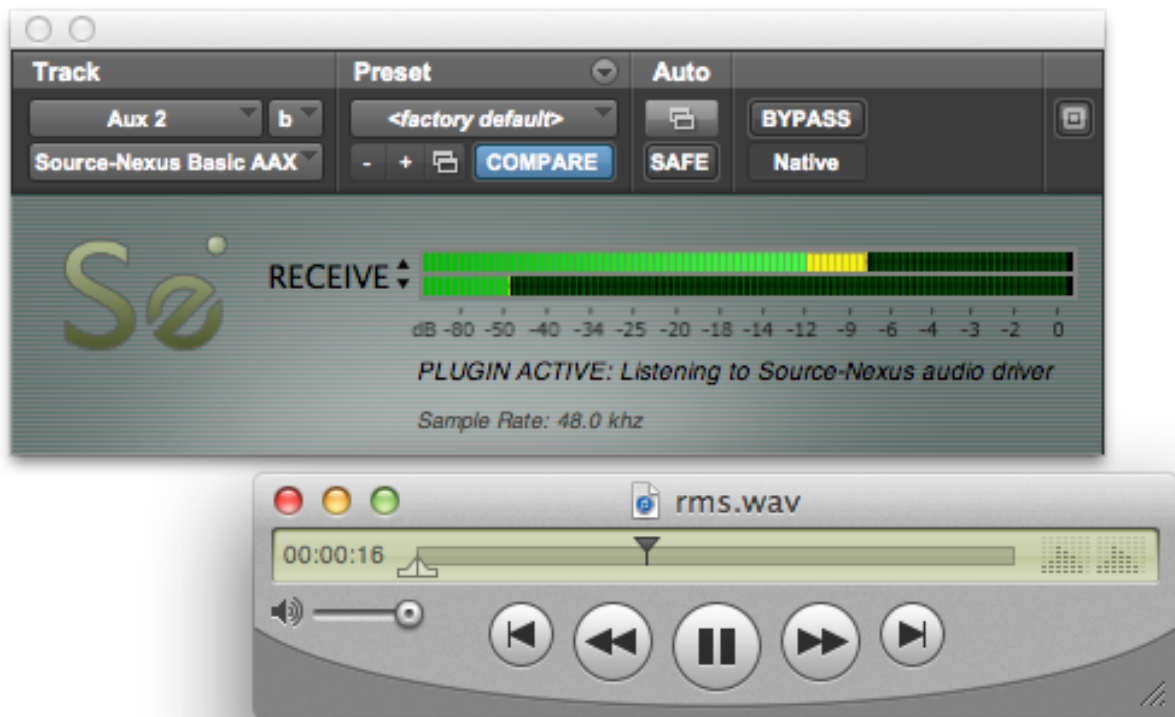
6.6 Using Aggregate Devices



We will use Pro Tools as the example DAW in the following guides, however the same principles apply to all other compatible DAWs.

## 6.1 Record from any application into Pro Tools using System Audio

1. In your System Preferences, set your Output device to Source-Nexus
2. Open the audio application you wish to play from.
3. Place Source-Nexus Basic AAX on a track and choose Receive mode.
4. The input will come from Channel 1 (mono), 1&2 (stereo).
5. In the example below we are receiving audio from QuickTime Player.

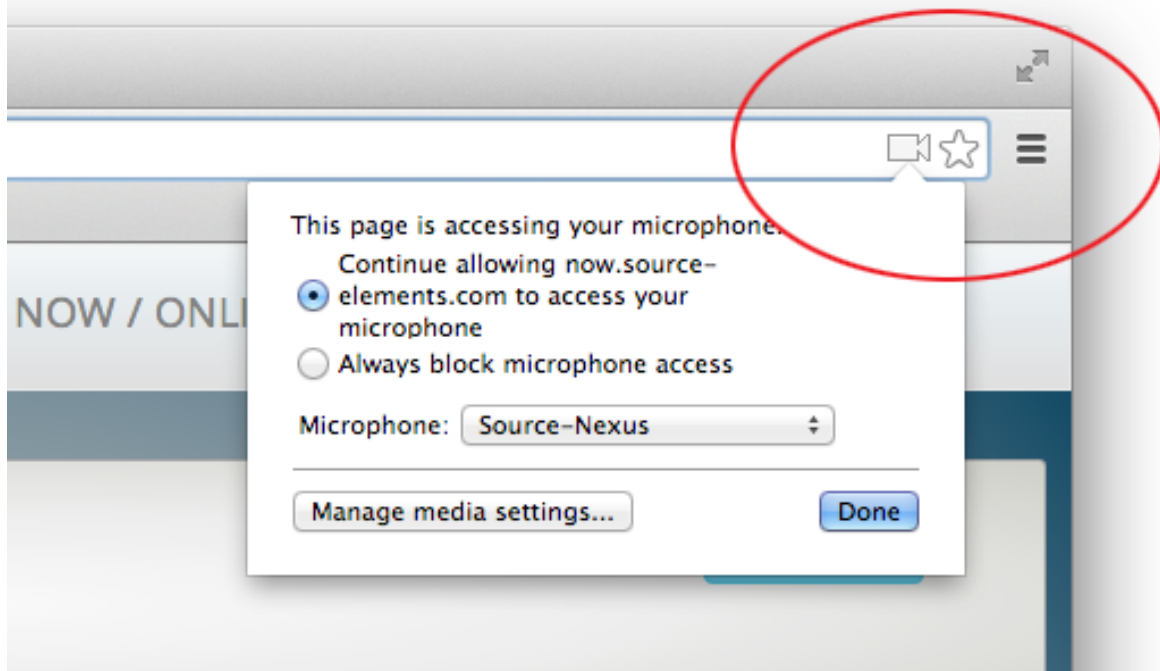


## 6.2 Send or Receive from Chrome and Source-Connect Now

First, decide if you want to send or receive audio. Chrome only supports channels one and two of any audio device, so it is not possible to both unless you are working strictly in mono.

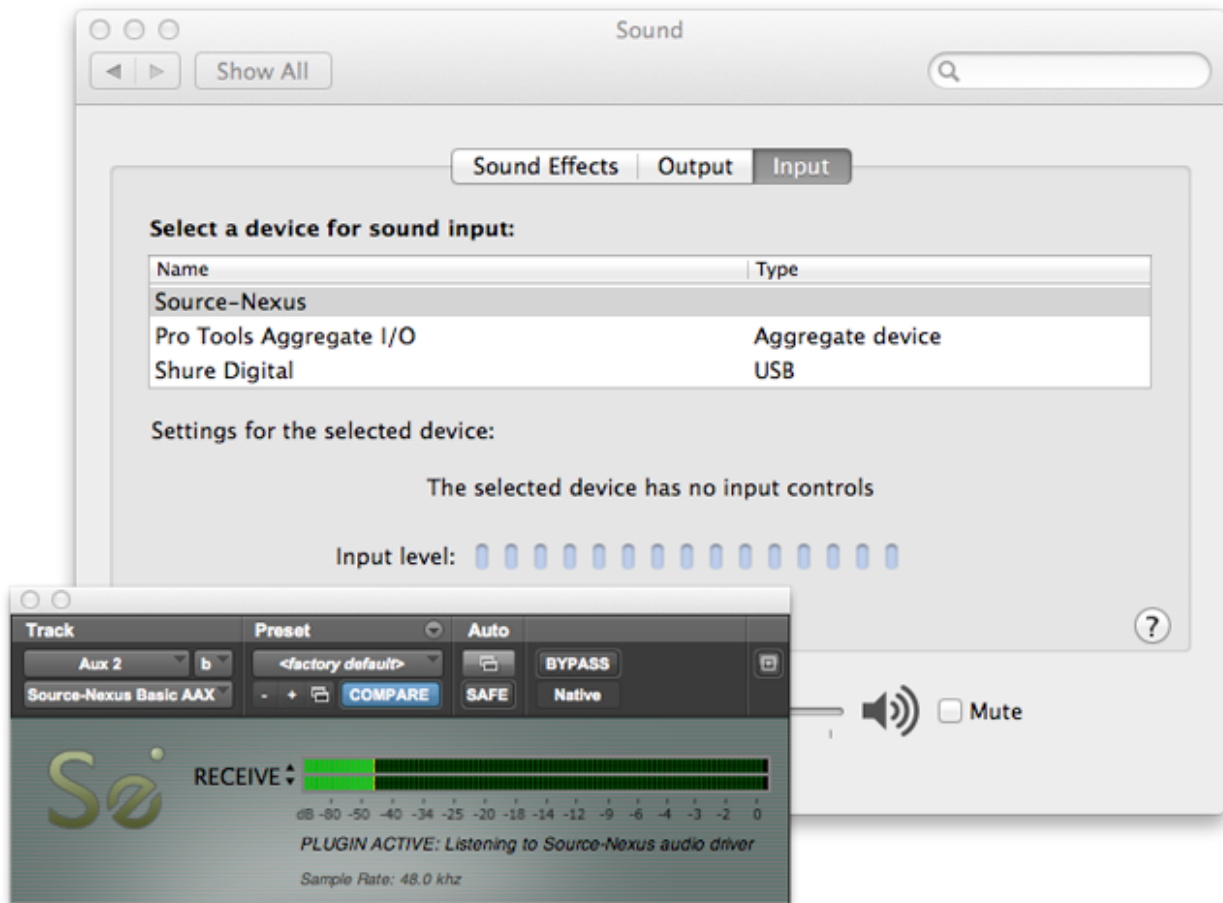
### SENDING PRO TOOLS TO CHROME / Source-Connect NOW

1. Put Source-Nexus Basic in SEND mode.
2. In Source-Connect Now, choose "Source-Nexus" as your input device.



## SENDING CHROME / Source-Connect Now TO PRO TOOLS

1. Put Source-Nexus Basic in RECEIVE mode
2. Set your **INPUT** to Source-Nexus in your System Preferences
3. You may wish to disable System Sounds, as these will also be sent to Source-Nexus.

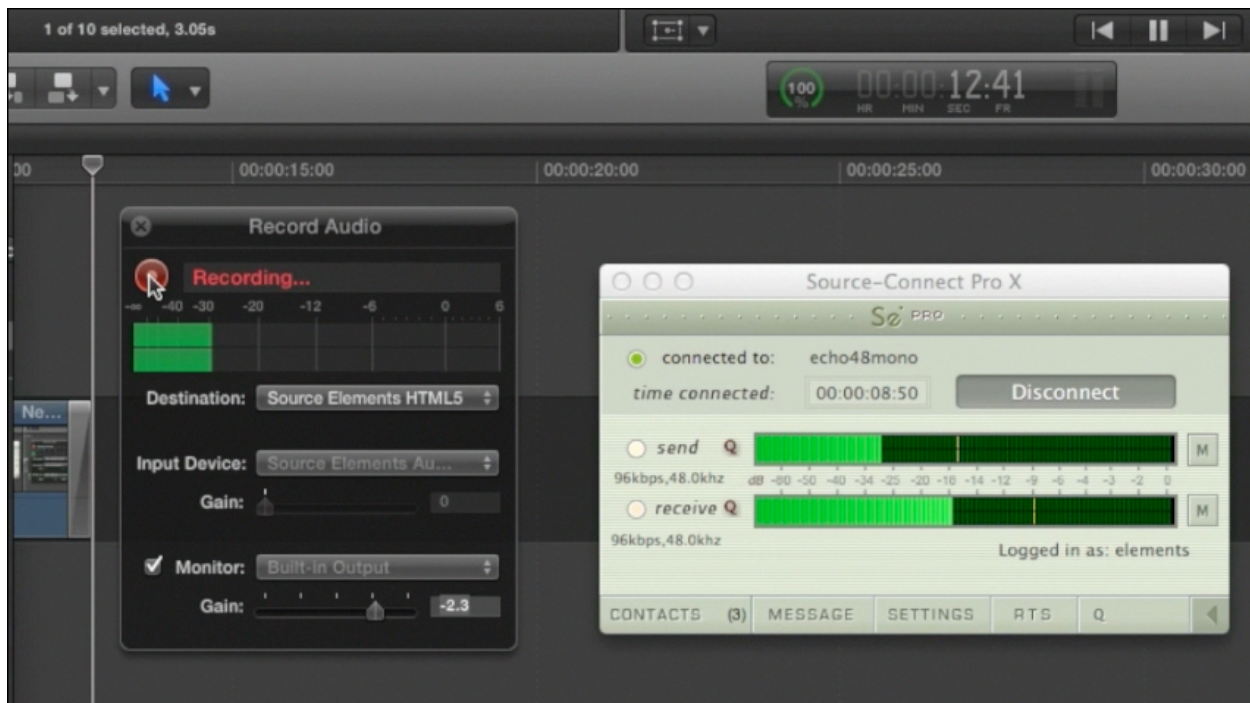




## 6.3 Record from Source–Connect to Final Cut Pro X

1. In Final Cut Pro X, set your audio input to “Source–Nexus: channel 1”
2. Check the Monitor checkbox so you can hear the other person from Source–Connect.
3. In Source–Connect, set your audio output to “Source–Nexus: channel 1”
4. In Source–Connect, set your audio input to any microphone available.

You can now record in Final Cut Pro directly from Source–Connect.

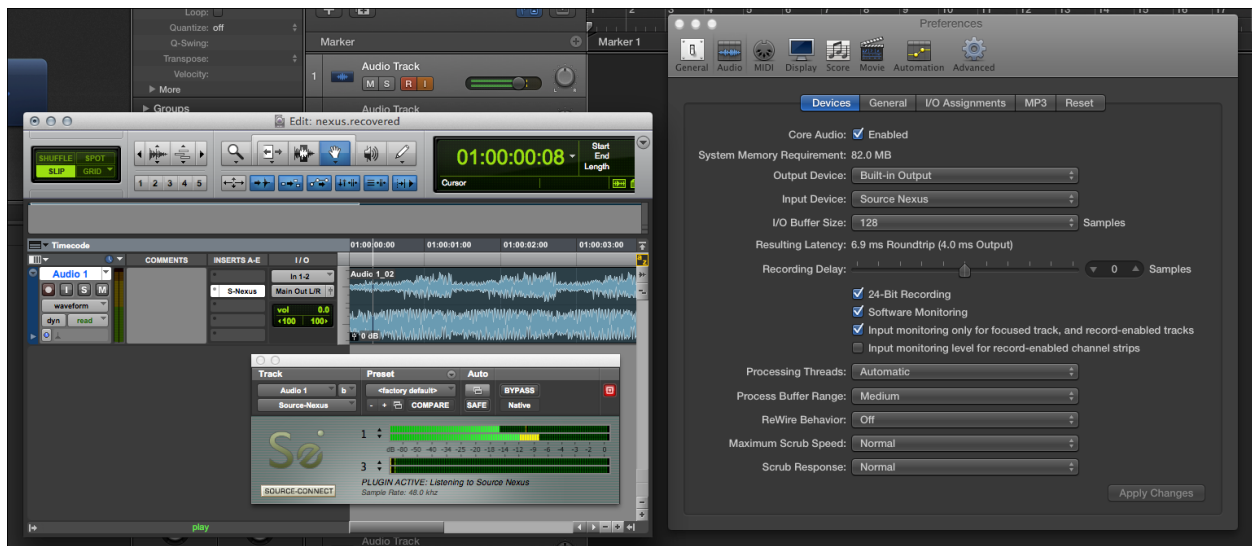


## 6.3 Recording out of Pro Tools

1. Set your System Preferences>Input to Source-Nexus
2. In the Source-Nexus AAX plugin, choose Send mode, and optionally the THRU button should be clicked if you want to monitor the same audio.

You can now record into any application directly from your Pro Tools timeline.

The example here shows Logic Pro X with the input set to Source-Nexus, recording audio from Pro Tools 10.



## 6.4 Using an Aggregate Device

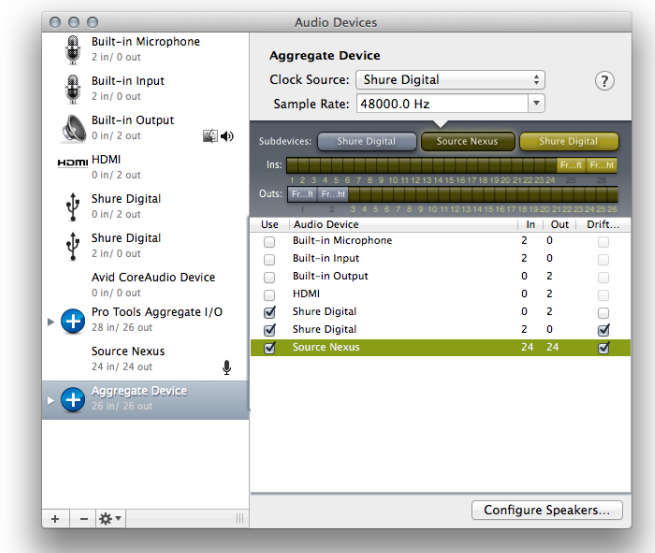
While the Source–Nexus Basic plug–in is mono or stereo only, you have full access to all 24 tracks via the Source–Nexus Audio Driver.

While you should not set your System Preferences>Sound to use both input and output of Source–Nexus (you will get a feedback loop because System Preferences will channel 1 output to channel 1 input), if one application can set its Audio Device you can use Source–Nexus directly or make an Aggregate Device.

### To make an Aggregate Device:

1. Open Audio Midi Setup under Applications/Utilities
2. Click on the + symbol at the bottom and choose Create Aggregate Device
3. Click on the audio devices you want to use

You can now choose this Aggregate Device as your Audio Driver, and access all of the 24 virtual channels of Source–Nexus.



## 6.5 Monitoring

Not all applications have a way to monitor an input. Use this great tool from Rogue Amoeba to monitor to what you are sending to Source-Nexus.

Download Line In for Mac OSX:

<http://www.rogueamoeba.com/freebies>

## 7. Known issues:

As discussed in section 5, take care not to cause feedback by sending signal to the same channel. Read the above examples carefully.

### Pro Tools 10 HD

If you experience a drift issue with Pro Tools 10 HD please try the following:

1. Remove the Avid Core Audio HAL plug-in from /Library/Audio/Plug-ins/HAL/AvidCoreAudio.plugin to see if this plug-in is somehow interfering with Source-Nexus.
2. Toggle the Pro Tools audio engine error suppression preference under Setup > Playback Engine... > Ignore Errors During Playback/Record. Test with this setting both enabled and disabled and see if there is any difference in the synchronization behavior.

## 8. Contact Support

### Contact Source Elements for technical and general support:

Comprehensive documentation is available on our website. If your question is not answered please contact us via telephone, email or we can arrange communication over other methods such as Skype on request.

#### Online support:

<http://www.source-elements.com/support>

#### Online forum:

<http://source-elements.com/community>

#### Telephone:

Chicago: +1 312 706 5555

London: +44 (0)20 7193 8755

Sydney: +61 (02) 8005 5903

Telephone hours: 6am - 6pm Central Time US (Chicago time).

#### After hours:

Please leave a message with your name and phone number and we will return your call as soon as possible. If we can't take your call immediately we call back at least the same day, if not earlier. We can also schedule an appointment for a convenient time for you.

## **Email:**

Technical support:     support@source-elements.com

Sales:                     sales@source elements.com

General:                 info@source-elements.com

When emailing Support, please provide us with the information required to resolve the issue: for example, your Source-Connect login, computer type, host version, and as much detail about the problem you are having as possible. This will assist us in responding to you with relevant assistance more rapidly.

## **Mailing address:**

Source Elements LLC 1222

Florence Ave

Evanston, Illinois 60202

United States