

How To Series

datecode genie®

SMART LABEL SOLUTIONS **AT YOUR COMMAND**

DateCodeGenie® N10 Tablet: Tablet Replacement

Foodservice
Solutions by **ncco**

07/7/2023

Overview

Step-by-step instructions to install and replace X Series or 2.0 model device tablet.

Requirements Needed:

- DateCodeGenie® X Series or 2.0 model device
- DateCodeGenie® N10 Tablet
- Part number: DCG-080-1050
- 2 mm Allen head L wrench (Provided)



Instructions

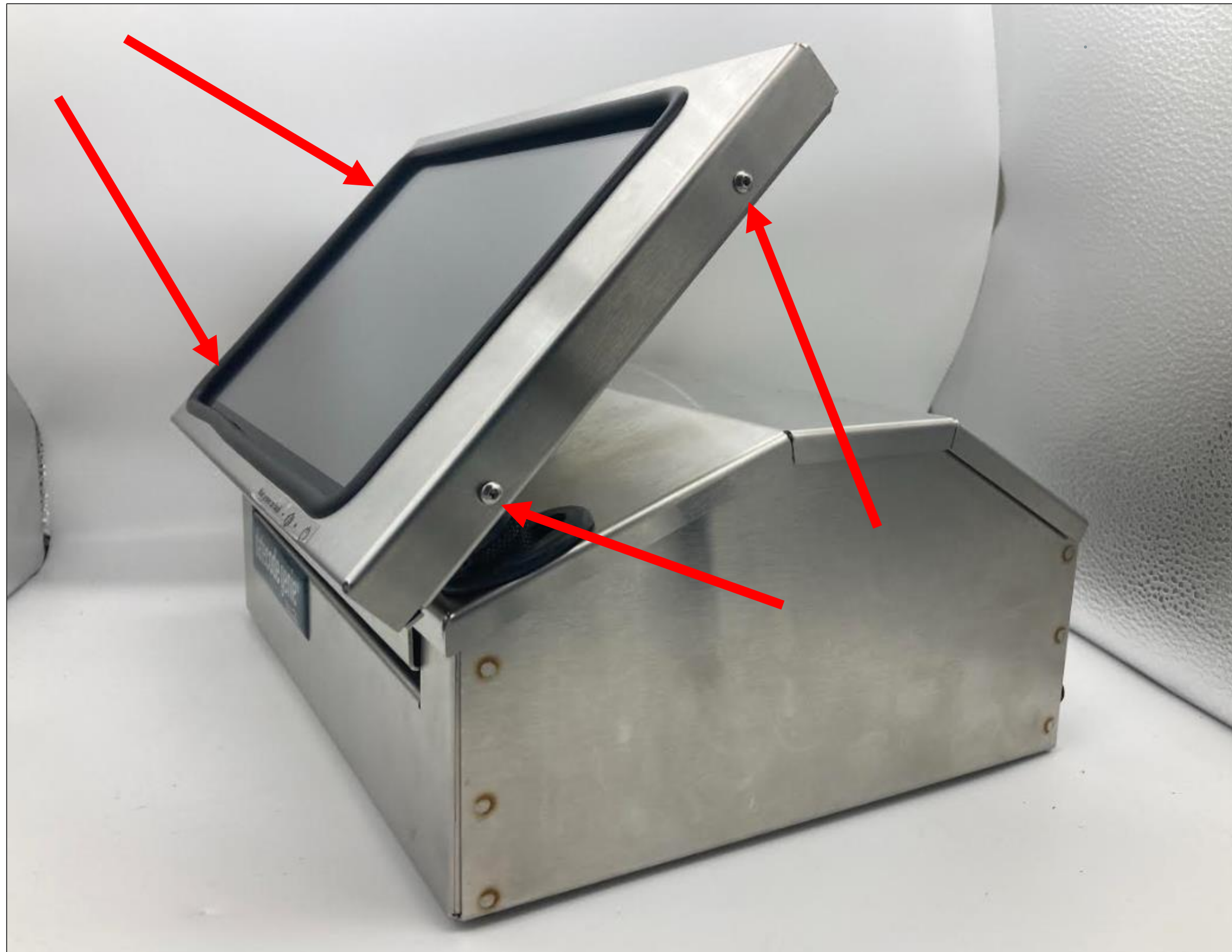
1. Toggle master power switch to O to turn off and unplug the power cord at the back of device.



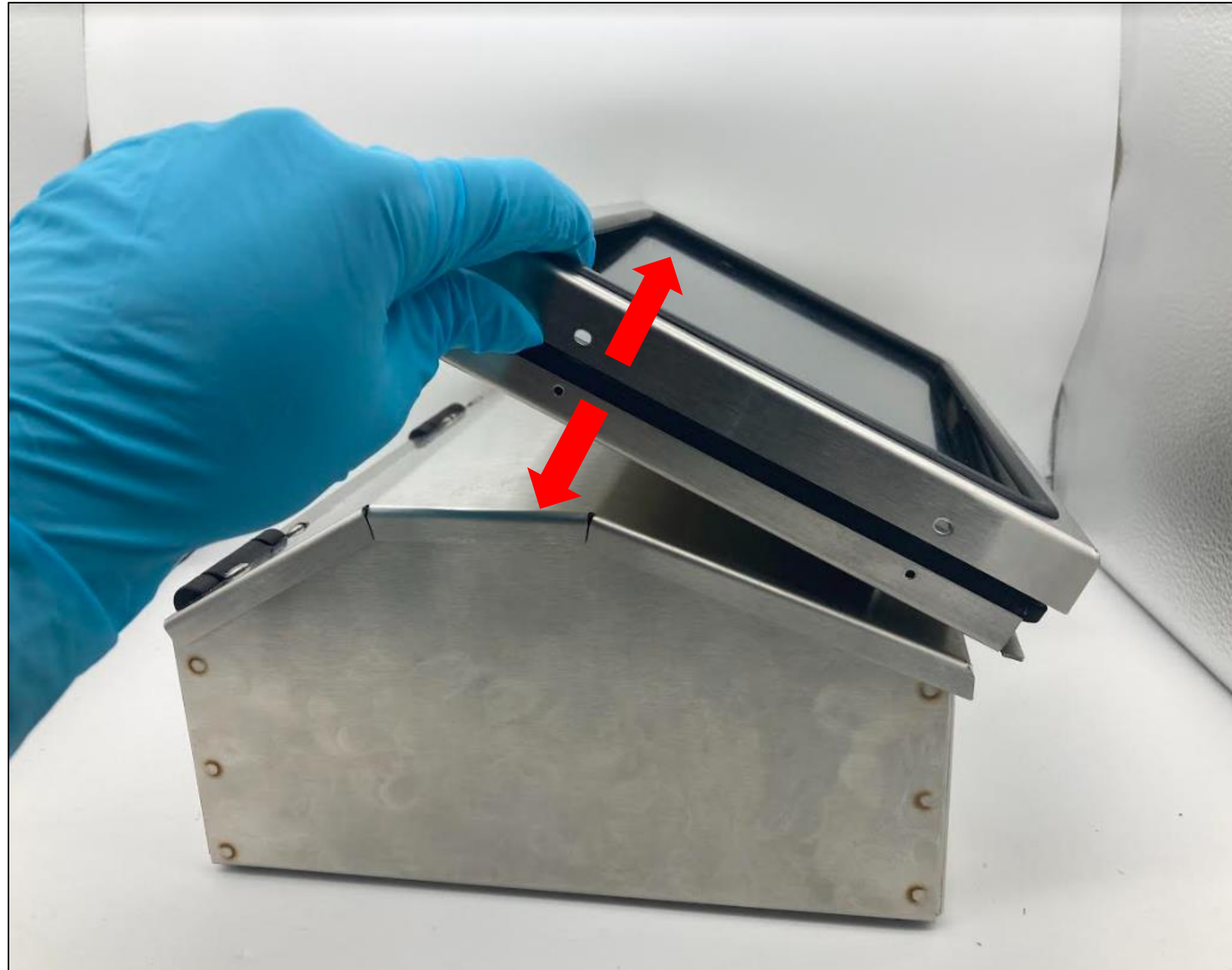
2. Locate the four screws on the sides of the tablet frame. Remove all four screws with the 2 mm Allen head L wrench. Set screws aside.



Edges of stainless steel may be sharp.



3. Separate the front and back of the tablet frame to expose the tablet.



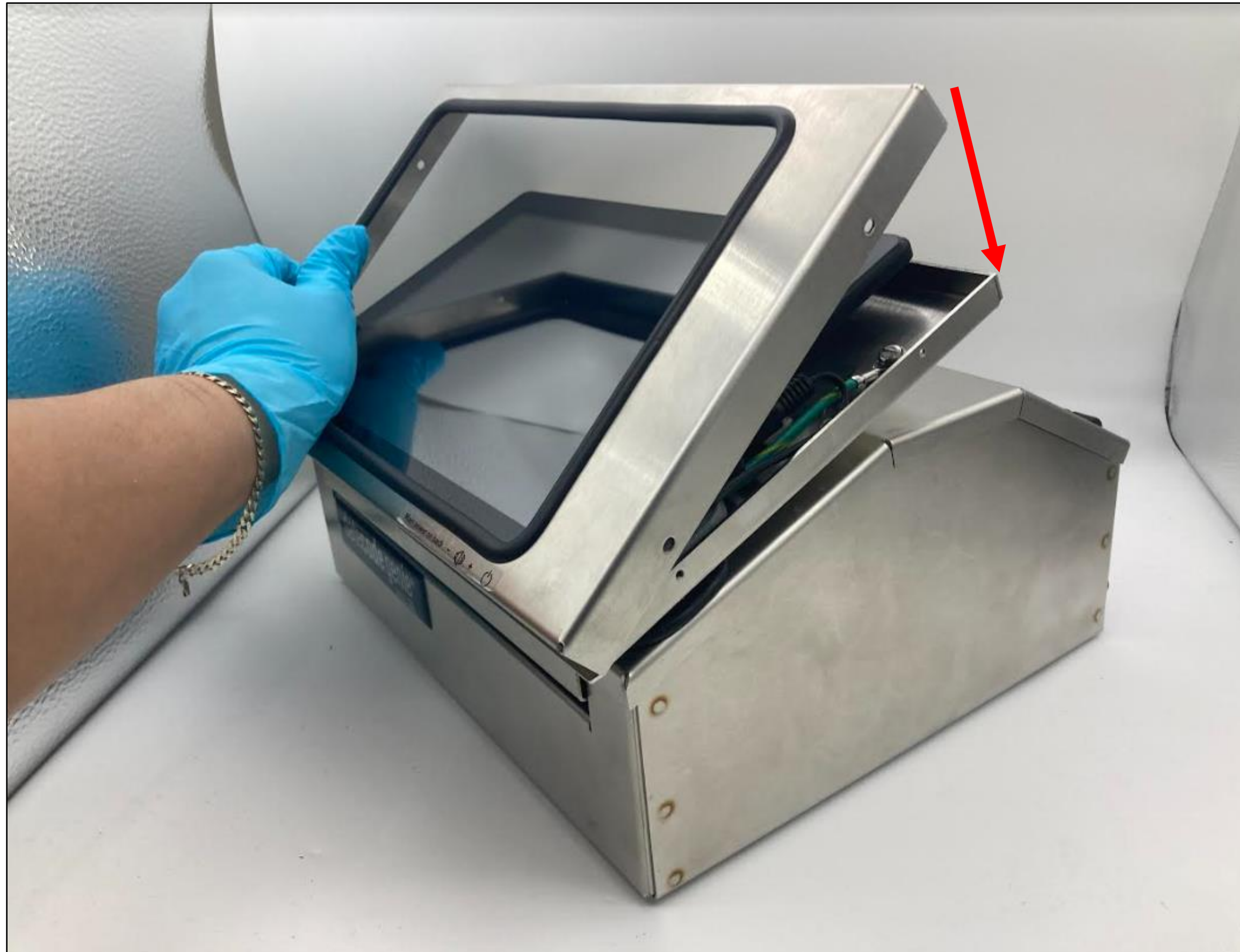
4. Disconnect all cables from the tablet.



Leave the green ground cable in place.



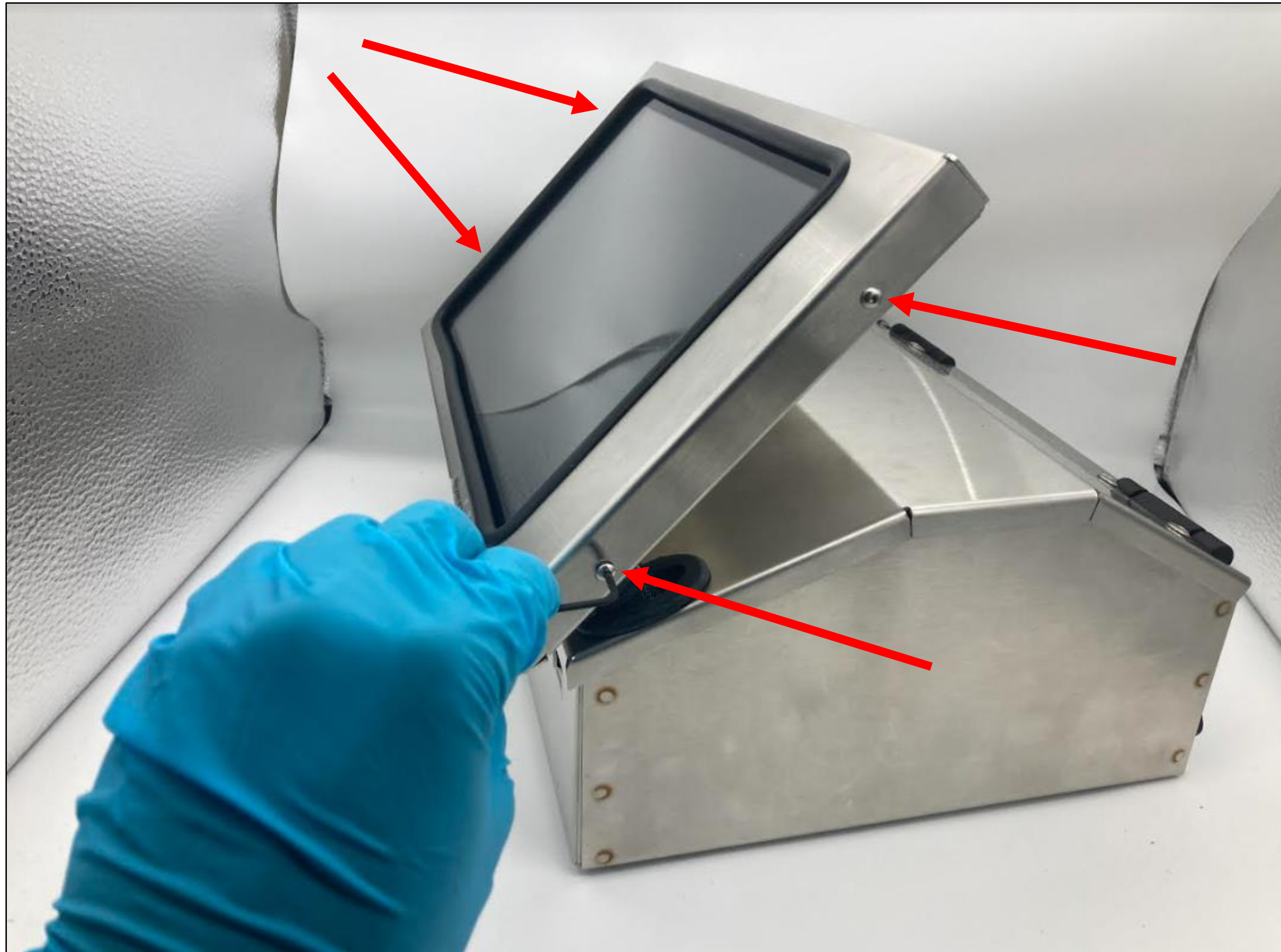
5. Place and reinstall the front tablet frame bottom first.



6. Inspect the cables to ensure they are not damaged. Connect cabling to the new tablet as shown.



7. Reinsert the four screws on the sides of the tablet frame using the 2 mm Allen head L wrench to tighten.



**Need
Assistance?**

Technical Support

dcgsupport@ncco.com

800.774.0478 x 3

