



Parts Included

- Fit Shelf
- Power Supply Cover
- 2 Screws
- Quick Start Guide

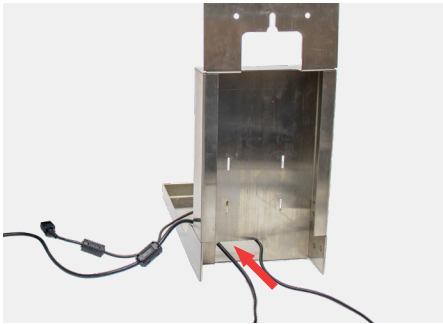
Tools Required

- Phillips Screwdriver
- 4 Screws (Thread Size M4 Thread Pitch 0.7 mm Length 12 mm)

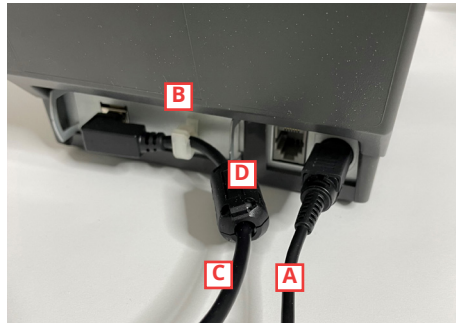
Optional (sold separately)

- VESA mount: 75x75, minimum 20 pd capacity

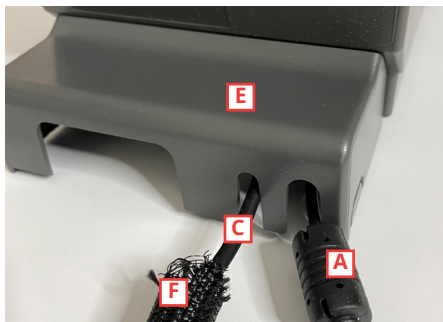
Setup



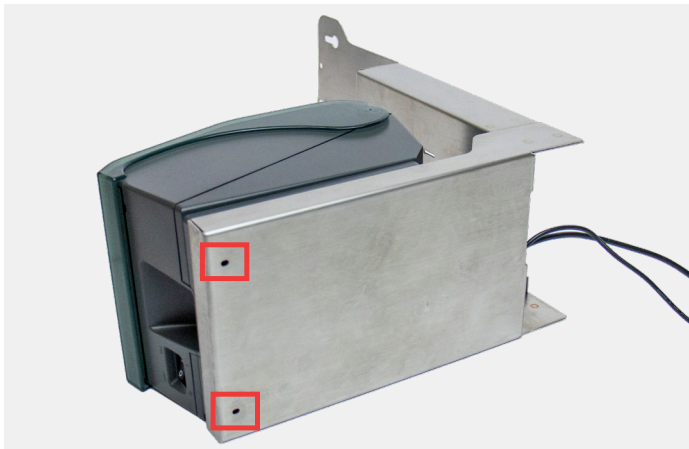
1. Feed the printer power cord and USB cable through the bottom opening.



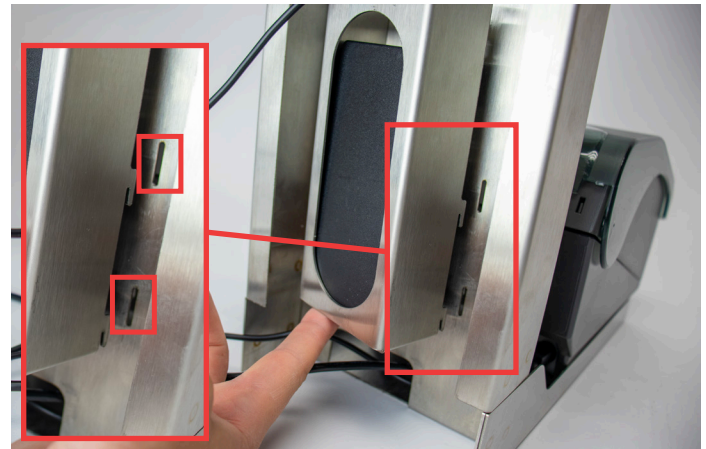
2. Connect the printer by plugging in the power cord **A** and USB cable **C**, using the white clip **B** to secure the cable. Attach the Ferrite clamp **D** about 1 inch away from the clip to close.



3. Snap the printer cable cover **E** in place to protect connections. Attach the mesh cable protector **F** to the USB cable **C**.



4. Place printer on tray of shelf and lay on side. Line up two holes with printer, insert two screws and tighten with Phillips screwdriver.



5. Place printer power supply into power supply cover with hooks pointing towards unplugged end. Insert power supply cover hooks into slots on back and gently push down to secure. Plug the other end of the power cord and USB cord into the back of the tablet.

There are two options for mounting your DCG Fit Shelf:

A. Direct to Wall Mount Option

Mounting the shelf directly onto the wall keeps it up and out of the way in one static location.



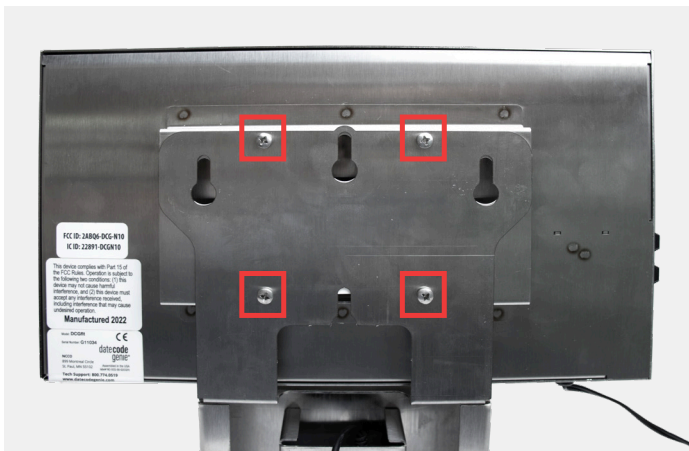
B. VESA Mount Option

The VESA mount option can tilt and adjust the position of the DCG Fit Shelf on the wall. Sold separately and can hold up to 20 lbs.

Manufacturers' instructions for mounting should be followed.



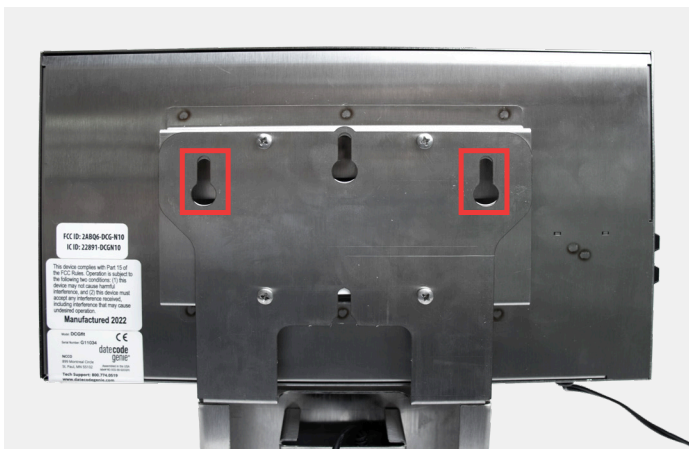
Mounting Options



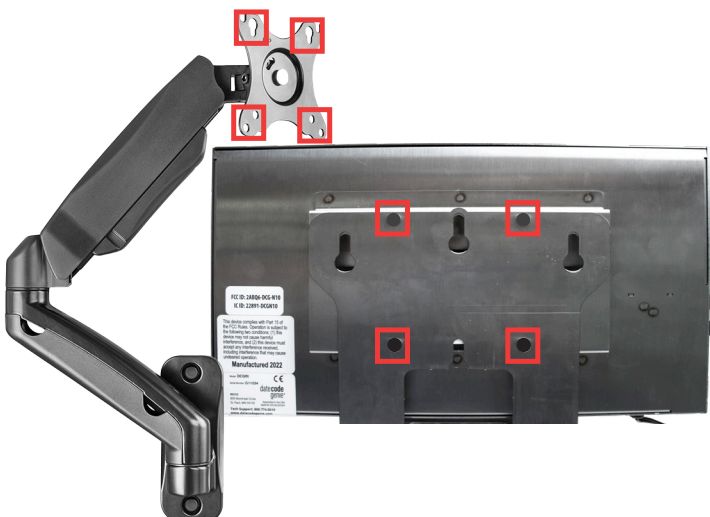
A. Wall Mount Option without VESA Mount

This wall option is for securing the Fit Shelf to the wall. Then attach tablet.

A1. Insert the four screws through the holes from the back of the shelf and into the holes on the tablet housing. Tighten with a Phillips screwdriver.



A2. Have a qualified contractor attach the assembled shelf to the wall using the two holes on the back of the shelf near an electric outlet.



B. VESA Mount Option

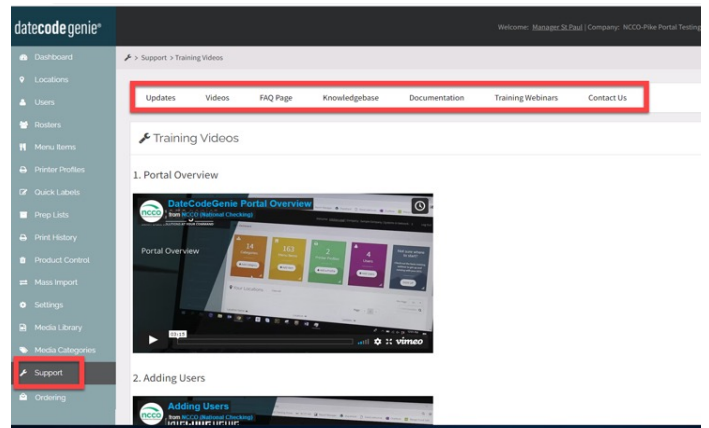
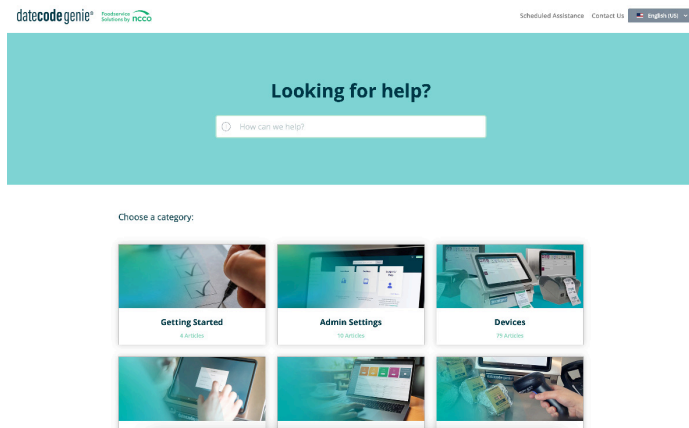
B1. Have a qualified contractor attach the VESA mount to the wall near an outlet. Insert the four screws through the holes from the back of the VESA mount, then the holes on the back of the shelf and into the holes on the tablet housing. Tighten with a Phillips screwdriver.

Training Resources

Have a DateCodeGenie question?
Find the answer in our knowledge base.
datecodegenie.com/support



Log into your portal at datecodegenie.com and access all training tools from the Support tab. See videos, knowledge base and more.



Contact & Support

Americas & Asia

Technical Support
800.774.0478 x 1
dcgsupport@ncco.com

Order Processing
800.328.6508
cs@ncco.com

Europe & UAE

Technical Support
00 44 (0)1283 527299 x 4
supportdgc@ncco.com

Customer Service
00 44 (0)1283 527977 option 4
supportdgc@ncco.com

To learn more about NCCO and view a full list of our products, visit us at ncco.com.

Looking for warranty information on your product? Limited-warranty information for DateCodeGenie products and third-party warranty information for accessories are all available to view and download at: support.datecodegenie.com/warranty