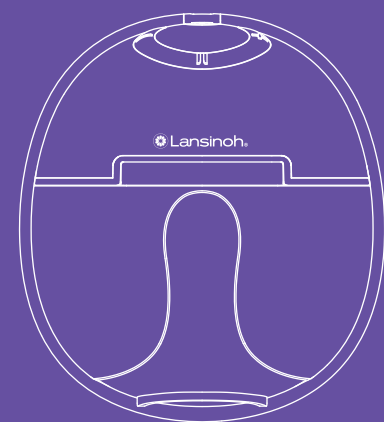


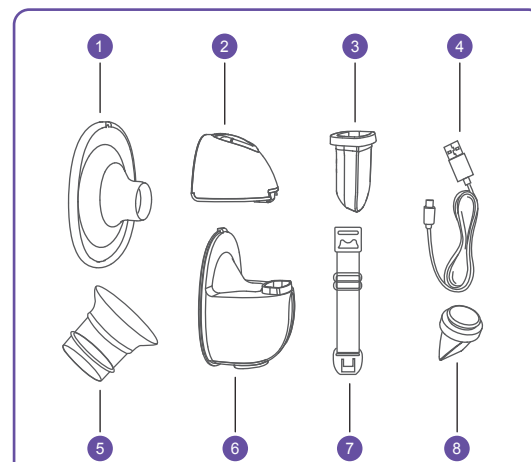
DiscreetDuo™ Wearable Pump

USER MANUAL



Read this user manual before using your wearable breast pump, and keep the user manual for future reference.

Product structure diagram

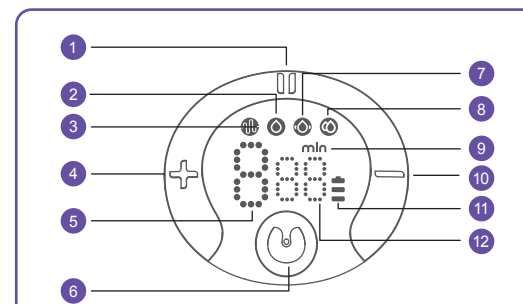


Parts list

- 1 Flange
- 2 Pump Motor
- 3 Silicone Diaphragm
- 4 USB Charging Cable
- 5 Flange insert
- 6 Milk Collector
- 7 Bra Adjustment Buckle
- 8 Valve

1

Description of led display & button function



- 1 Pause/Start button
- 2 Expression mode
- 3 Stimulation mode
- 4 Suction increase button
- 5 Suction level display
- 6 Power button/ Mode selection button
- 7 Massage mode
- 8 Automatic mode
- 9 Time/Minute
- 10 Suction decrease button
- 11 Power display
- 12 Time display

What's in the box

- 2x pumping motor
- 2x 24mm flange
- 2x 21mm flange insert
- 2x silicone diaphragm
- 2x 6 oz milk collector
- 2x valve
- 2x USB charging cable
- 2x bra adjustment buckle

2

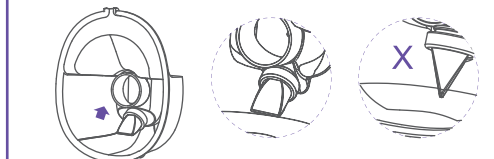
Assembly

To assemble the pump, follow the steps below.

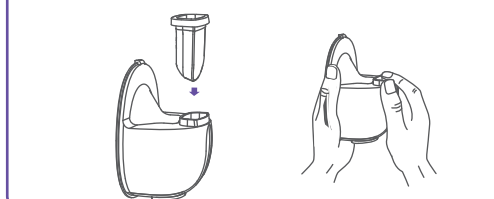
CAUTIONS

- Make sure that you clean the pump as instructed in this user manual.
- Make sure that you assemble the pump correctly as instructed in this user manual.
- To avoid leakage, remove the residue around the rim before assembling.
- Wash your hands thoroughly before you assemble cleaned components.

1. Install the valve to the milk collector, pay attention to the direction of installation.



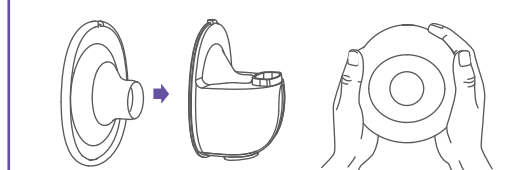
2. Put the silicone diaphragm into the milk collector, and press it with your hands to make the edges fasten tightly to ensure a perfect seal.



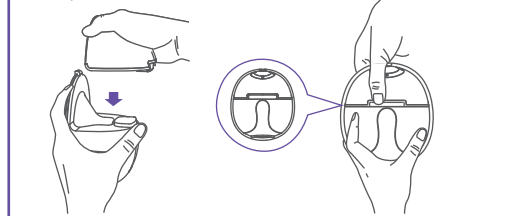
3

Assembly

3. To install the flange on milk collector, make sure to align the diversion groove on the flange with the backflow groove on the milk collector, and then press the edges with both hands to ensure the seal is in place.



4. Install the main body of the breast pump on the milk collector, align the notch under the main body with the silicone diaphragm, and assemble it downward to fit the milk collector to ensure a complete seal.



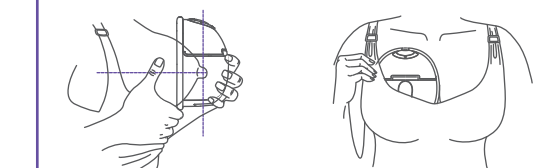
WARNINGS

The breast pump does not work when charging with a Charger.

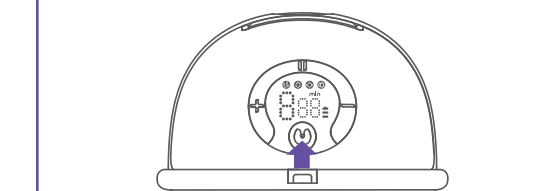
4

To begin pumping

1. Press the flange firmly against the breast, leave no gaps and make sure your nipples are centered. Keep it upright. Be careful not to distort the position of the product and the chest, otherwise the breast pump will not have suction.

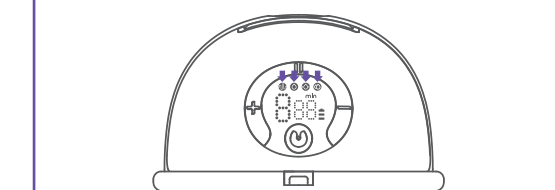
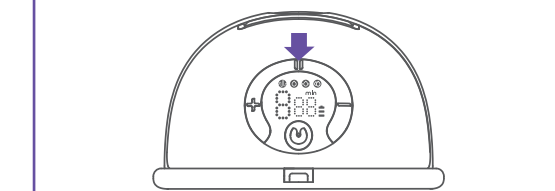


2. Press and hold down the power button to start the breast pump.



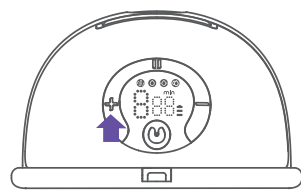
5

3. You can quickly press the "M" button to control the breast pump start and pause. Quickly press the "M" button to switch modes after the breast pump starts. By pressing this button, there are four modes (stimulation mode, expression mode, massage mode and automatic mode) for you to choose. When the "M" is lit, it means the stimulation mode; when the "M" is lit, it means the expression mode; when the "M" is lit, it means the massage mode; when the "M" is lit, it means the automatic mode.

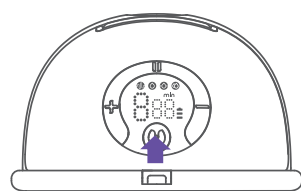


6

4. There are 9 suction levels in each mode. You can choose the suction that makes you comfortable by pressing the "+" level up and "-" level down button.



5. Press and hold down the power button "M" to turn off the breast pump.

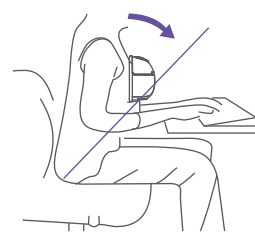


7

Tips: 1. This model has built-in memory function, when you turn on the pump again, the pump shifts to the pumping mode you used last time.
2. The breast pump will automatically stop after 20 minutes.

Breastfeeding sitting position

Relax and sit in a comfortable chair, lean slightly forward (use a cushion for back support). Make sure to keep the breast pump and breast cup upright.



Sitting posture

8

Cleaning

Cleaning & maintenance

	First Time Use	After Each Use
Pump Body	Turn on the Pump by pressing power button.	Wipe with a clean damp cloth with 70% ethyl alcohol or isopropyl alcohol as needed. Do not immerse Pump in water.
Flange, Silicone Diaphragm, Valve, Flange Insert, and Milk Collector	Boil in water for 5 minutes. Do not microwave Flange, Silicone Diaphragm, Valve, Flange Insert, and Milk Collector.	Clean with mild dish washing soap and clean water.

WARNINGS

- Be careful when removing and cleaning the valve, if the valve is damaged, the breast pump will not work properly.
- To clean the valve, please rub it gently in the warm water with a few drops of cleaning liquid. Do not insert any objects into the valve, which may cause damage.

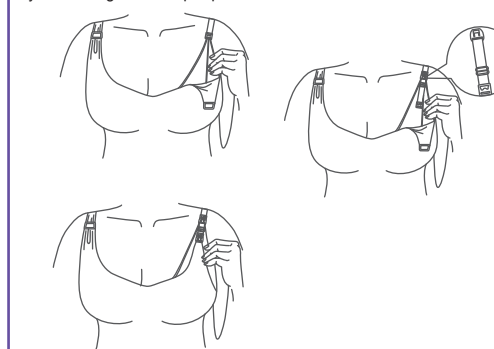
Clean by hand

- Place pump parts in a clean wash basin used only for infant feeding items. Do not place pump parts directly in the sink.
- Add soap and hot water to basin.
- Scrub items using a clean brush only for infant feeding items.
- Rinse by holding items under running water, or by submerging in fresh water in a separate basin.
- Air-dry thoroughly. Place pump parts, wash basin, and bottle brush on a clean, unused dish towel or paper towel in an area protected from dirt and dust. Do not use a dish towel to rub or pat items dry.
- Clean wash basin and bottle brush. Rinse them well and allow them to air-dry after each use. Wash them by hand at least every few days.

9

Instructions for bra adjusting buckle

Adjust the length of bra straps to make suction more comfortable. Place one end of the bra adjustment buckle on the inside buckle of nursing bra. Place the other end of the bra adjustment buckle onto your nursing bra's strap clip.



Battery status indicator

Battery status indicator displayed	Remaining pump time left
Three level is always on	100 minutes
Two level is always on	70 minutes
One level is always on	30 minutes
One level flashing	10 minutes

10

Finish pumping & transferring your breast milk

After you finish pumping please remove the breast pump from the breast. Keep the breast pump upright and remove the motor part and hold the milk collector to pour the breast milk into the bottle. Make sure the milk collector gap of the breast cup is aligned with the mouth of the bottle to prevent spilled breast milk.

1. When you finished expressing, press and hold the power button to switch off and break the seal between the breast and the pump funnel with your finger, and then carefully remove the pump from your breast.



2. Separate the milk collector from the pump motor ready for feeding/storage. Clean the other used parts per the instructions.



3. Pour the milk into the storage bottle; make sure the slot feature is aligned with the bottle.



11

Storing your breast milk

Storing breast milk

1. Only store breast milk collected by sanitized breast pumps.
2. The extracted milk can be placed in a clean and sterilized milk storage bag or a milk bottle with a sealing cushion, and immediately placed in the refrigerator to refrigerate or freeze.

Breast milk cold storage

1. Do not freeze breast milk repeatedly.
2. Do not mix fresh breast milk with frozen breast milk.
3. Be sure to discard the breast milk left after feeding.
4. The extracted milk can be refrigerated for 48 hours (inside the refrigerator) or frozen in the freezer for three months. Label the bottle or milk storage bag with date and time of when the breastmilk was pumped.

Unfreeze breast milk

Place the frozen breast milk in the refrigerator compartment for one night to thaw. Do not microwave human milk and do not refreeze milk once it is thawed. After thawing breast milk, it must be consumed within 24 hours.

Breast milk heating

1. Place the baby bottle upright in a bowl of hot water or heat the breast milk safely and quickly with a baby bottle and food heater.
2. Keep in mind! Before feeding your baby, be sure to check the temperature of breast milk.
3. Do not use a microwave oven to heat breast milk, because this may destroy important nutrients and antibodies.
4. In addition, uneven heating may cause partial overheating of the liquid, which may cause burns.
5. Do not immerse the milk storage bottle in boiling water to heat it to prevent it from rupturing or cracking.

12

Warranty

Limited Consumer Product Warranty (United States) This product is warranted to the original consumer purchaser (the "purchaser") to be free from defects in material and workmanship which are not commercially acceptable for the period of one year from the date of purchase on the pump mechanism (pump body and pump motor) and the period of 90 days from the date of purchase on all other product components. This warranty is provided only to products purchased in the United States and parts shipped within the United States.

Warranty coverage terminates if you (1) sell or otherwise transfer this product to another person; (2) improperly or incorrectly perform any maintenance or repair of this product; (3) use any non-Lansinoh® brand replacement parts with this product; or (4) misuse, abuse, or alter the product. This warranty gives you specific legal rights and you may also have other rights, which vary by location.

LANSINOH® MAKES NO EXPRESS OR IMPLIED WARRANTY OF ANY KIND REGARDING THE PRODUCT OTHER THAN THOSE WARRANTIES EXPLICITLY SET FORTH HEREIN. ANY IMPLIED WARRANTY, INCLUDING ANY IMPLIED WARRANTY OF MERCHANTABILITY OR ANY IMPLIED WARRANTY OF FITNESS FOR A PARTICULAR PURPOSE, TO THE EXTENT PERMITTED BY LAW, SHALL BE LIMITED IN DURATION TO A PERIOD OF 90 DAYS FROM THE DATE OF PURCHASE BY THE ORIGINAL PURCHASER.

In the event the product is found by Lansinoh® to not meet the above limited warranty, as purchaser's sole and exclusive remedy Lansinoh® will repair or, at the option of Lansinoh®, replace this product without charge for such replacement or parts or labor. No replacement or repair is provided outside of the United States.

NOTE: The purchaser shall bear all expense for returning this product to Lansinoh®. Only Lansinoh® brand replacement parts are recommended for use with Lansinoh® breastfeeding products.

TO THE EXTENT PERMITTED BY LAW, LANSINOH® SHALL NOT BE LIABLE FOR ANY INCIDENTAL OR CONSEQUENTIAL DAMAGES INCLUDING, BUT NOT LIMITED TO, REPLACEMENT COSTS RESULTING FROM THE BREACH OF ANY EXPRESS OR IMPLIED WARRANTY.

If you wish to make a claim under this warranty, you must return the product to Lansinoh® Laboratories Inc., prepaid, together with your dated bill of sale or other dated proof of purchase and a brief statement of the problem, along with a Replacement Authorization (RA) number. You may obtain the appropriate Replacement Authorization number and shipping address by calling the phone number or sending an email to the email address provided below.

Items returned without an associated Replacement Authorization Number will be returned to sender.

To obtain the address to Return Goods or a Replacement Authorization Number: 800-292-4794 | customerservice@lansinoh.com

13

WP53751F1123