

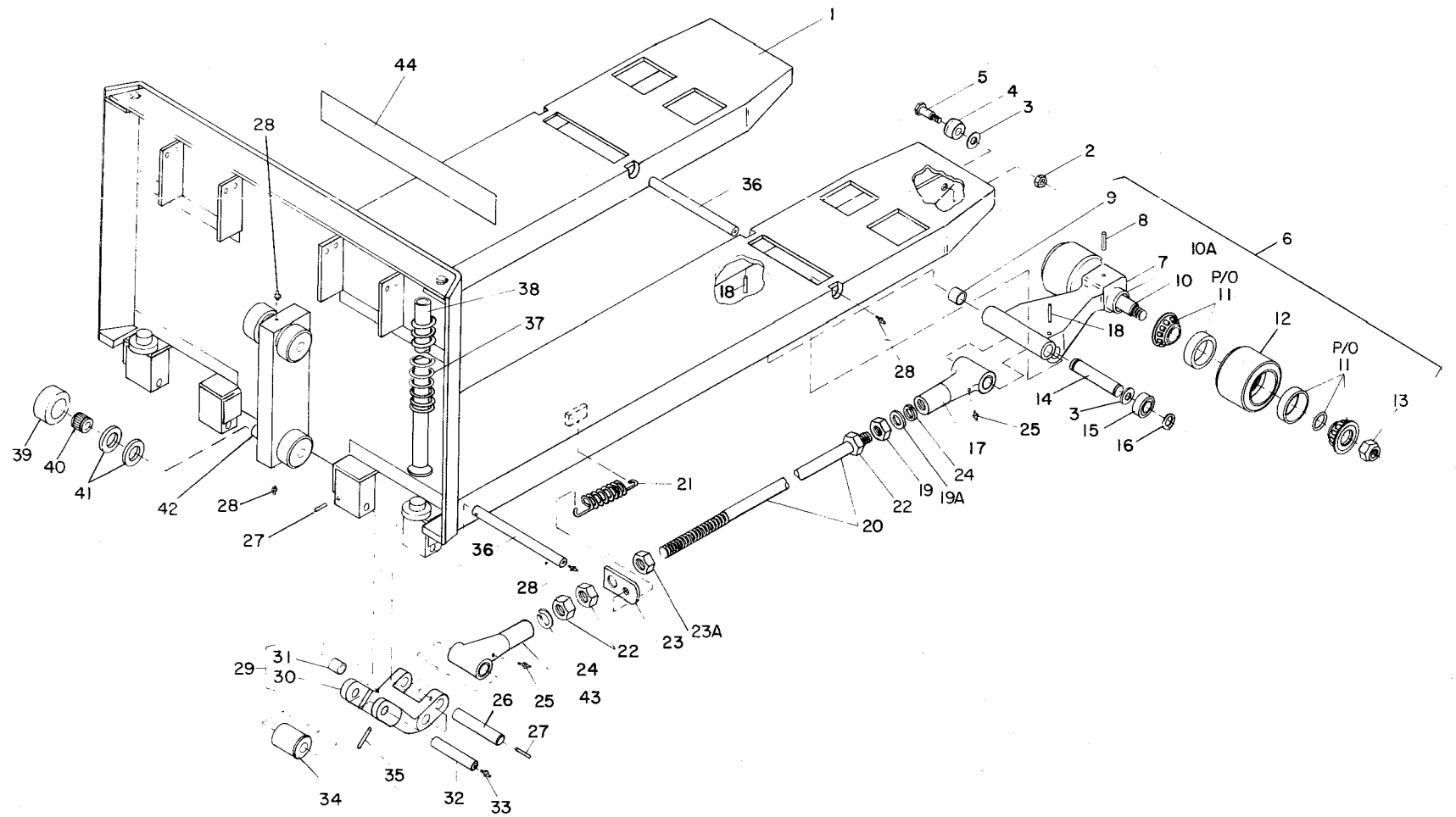
SUPPLEMENT
WPT and WRT TRUCKS
SERIAL NO. 307416 and Higher

1. GENERAL

This supplement describes the new version of the WPT and WRT trucks **serial number 307416 and higher**. Only illustrations affected by this change are included in this supplement. Parts list information includes all changed part numbers. Refer to the basic manual for all other parts information.

2. LOAD AND BACKREST ASSEMBLY

Part number 504372 is the complete assembly for standard straddle trucks and 504379 for narrow straddle and includes all parts shown in figure 1. Part number 504370 for standard straddle and 504352 for narrow straddle are only the weldment with all other parts removed. Use the charts in the parts list for figure 1 to identify the correct Dash No. for the fork end assembly, fork and backrest weldment and pull rod assembly. The correct Dash No. depends on fork length as indicated.



R1678

Figure 1. Backrest/Fork Assembly

INDEX NO.	PART NO.	PART NAME	NO. REQD.
	504372*	Backrest/Fork Assembly (See Chart 1)	1
	504379†	Backrest/Fork Assembly (See Chart 2)	2
1	504370*	Fork and Backrest Weldment (See Chart 1)	1
	504352*	Fork and Backrest Weldment (See Chart 2)	2
2	059645	Nut, Lock 5/8-18 UNF	6
3	077115	Thrust Washer	10
4	503955-01	Roller Assembly	6
5	401503	Shoulder Bolt	6
6	503963††	Load Wheel and Housing Assembly	2
6	504105†	Load Wheel and Housing Assembly	2
7	800229††	Load Wheel Housing	1
7	800249†	Load Wheel Housing	1
8	061010	Roll Pin, 1/4 X 1-3/4	1
9	052941-01	Bearing	2
10	401506††	Shaft, Load Wheel	1
10	401714†	Shaft, Load Wheel	1
10A	401713†	Spacer	1
11	051225	Bearing Set	2
12	078264††	Load Wheel	2
12	078267†	Load Wheel	2
13	059130	Locknut, Hex., Thin 7/8-14 UNF-3B	2
14	401496	Shaft	2
15	503955-02	Roller Assembly	4
16	061719	Snap Ring, Ext. 3/4	4
17	503957-02	Clevis Assembly	2
18	061008††	Roll Pin, 1/4 X 1-1/2	4
18	061006†	Roll Pin, 1/4 X 1-1/4	1
19	059452	Nut, 7/8-14 UNF, Left Hand Thread	2
20	504376*††	Pull Rod (See Chart 1)	2
	504376†	Pull Rod (See Chart 2)	2
21	075084††	Spring, Extension	2
21	075085†	Spring, Extension	2
22	059451	Nut, 7/8-14 UNF, Right Hand Thread	6
23	401399	Plate, Spring	2
23	401707†	Bracket	2
23a	401708	Nut, Spring Retainer	2
24	077221	Lock Washer, 7/8 Split	4
25	025702	Grease Fitting	4
26	401504	Shaft	2
27	061006	Roll Pin, 1/4 X 1-1/4	4
28	025704	Grease Fitting	6
29	503958	Pull Link Assembly	2
30	800232	Pull Link	1

INDEX NO.	PART NO.	PART NAME	NO. REQD.
31	052941-01	Bearing, Sleeve	2
32	401505	Pin, Roller, 0.625 OD X 3-3/8	2
33	025701††	Grease Fitting, 90°	2
33	025704†	Grease Fitting	2
34	503962††	Roller Assembly	2
34	504356†	Roller Assembly	2
35	060974	Roll Pin, 3/16 X 1-1/4	2
36	401497††	Shaft, Pivot	4
36	401710†	Shaft	4
37	075077	Spring, Compression	2
38	057614	Spring Guide, Tube	2
—	500166	Roller Bearing Assy	4
39	243401	Roller	4
40	051145	Bearing	4
41	053012	Roller Spacer, 3/16 in. thick	A/R
41	053013	Roller Spacer, 3/32 in. thick	A/R
42	236001	Spindle, 1-1/4 in. dia.	4
43	503957-01	Clevis Assembly	2
44	056499	Decal, NO RIDING	1

*USE APPROPRIATE PART.

CHART 1

FORK END ASSEMBLY	DASH NO.	FORK AND BACKREST WLDMNT	DASH NO.	PULL ROD ASSEMBLY	DASH NO.	LENGTH
504372	-01	504370	-01	504376	-01	36
504372	-02	504370	-02	504376	-02	42
504372	-03	504370	-03	504376	-03	48
504372	-04	504370	-04	504376	-04	50,56
504372	-05	504370	-05	504376	-05	54
504372	-06	504370	-06	504376	-06	60
504375	-01	504370	-07	504376	-05	64
504375	-02	504370	-08	504376	-06	76
504375	-03	504370	-09	504376	-07	84

CHART 2

FORK END ASSEMBLY	DASH NO.	FORK AND BACKREST WLDMNT	DASH NO.	PULL ROD ASSEMBLY	DASH NO.	LENGTH
504379	-01	504352	-01	504376	-01	36
504379	-02	504352	-02	504376	-02	42
504379	-03	504352	-03	504376	-03	48
504379	-04	504352	-04	504376	-05	54
504379	-05	504352	-05	504376	-06	60

†Parts for narrow straddle assy only.

††Parts for standard straddle assy only.

3. BASE AND FRAME

The main changes to the base and frame are associated with the hydraulic compartment cover and the left and right side door weldments. The changed items are shown with an asterik on the illustration next to the Index No. The index number below refers to the index number in the basic manual, figure 3-9 for the WPT and figure 3-10 for the WRT.

Index No

- 3 Part number changed to P/N 069715
- 4 Replaced with item 35 P/N 063478
- 5 Part number changed to P/N 402014 Standard and 402030 Narrow Straddle
- 7 Deleted
- 12 Part number changed to P/N 503954
- 26 Part number changed to P/N 056593
- 27 Part number changed to P/N 503953

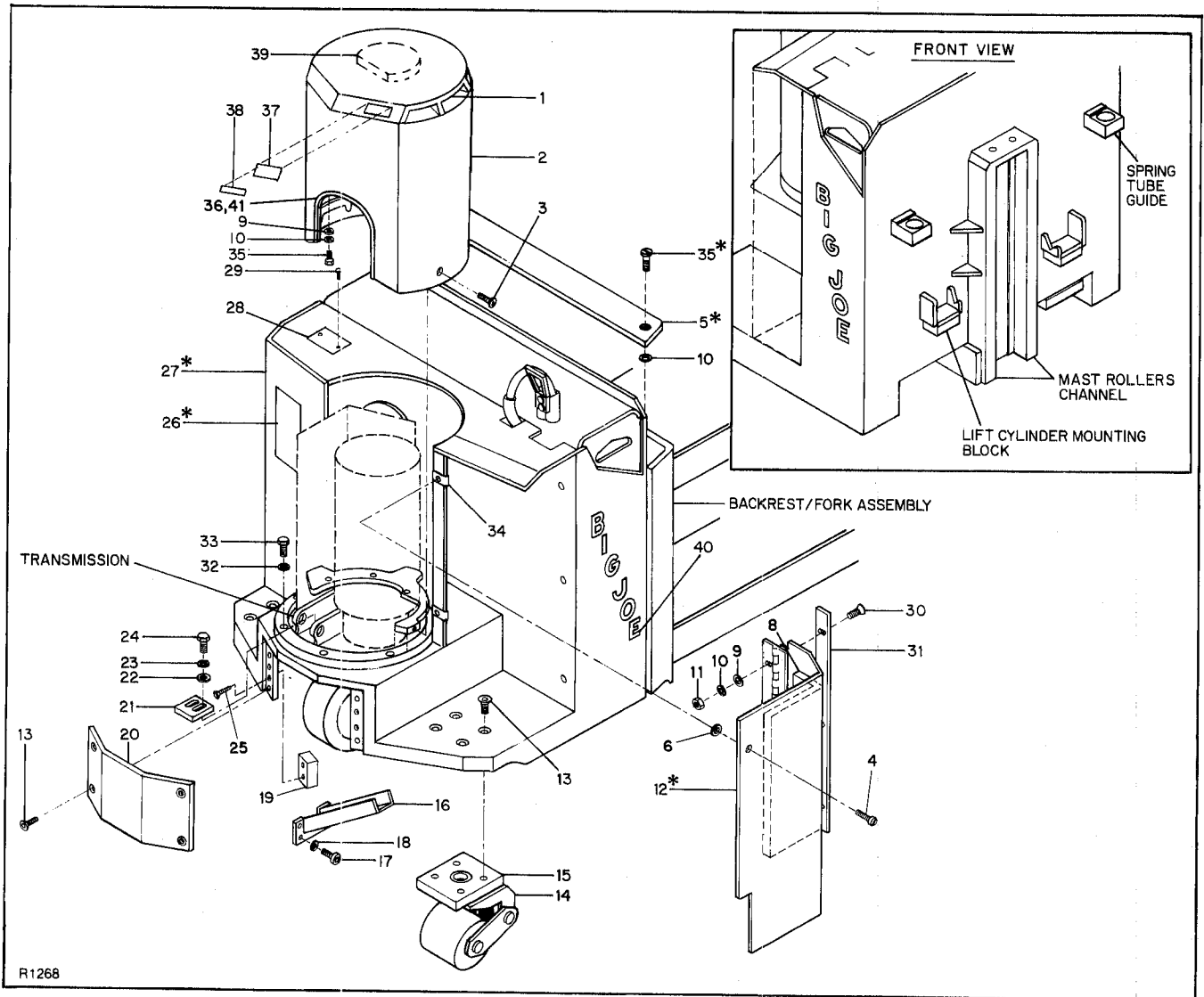


Figure 2. Base and Frame

4. HYDRAULIC SYSTEM

The only change to the hydraulic system is the addition of a hex head screw and flat washer used to secure the top of the lift cylinder. These are shown with an asterisk in figure 3 and are identified as follows:

INDEX NO.	PART NO.	PART NAME	NO. REQD.
24	063482	Screw, Hex, 1/4-20 x 1-3/4	2
25	077031	Washer, Flat, 5/16 x 3/4, 16GA	2

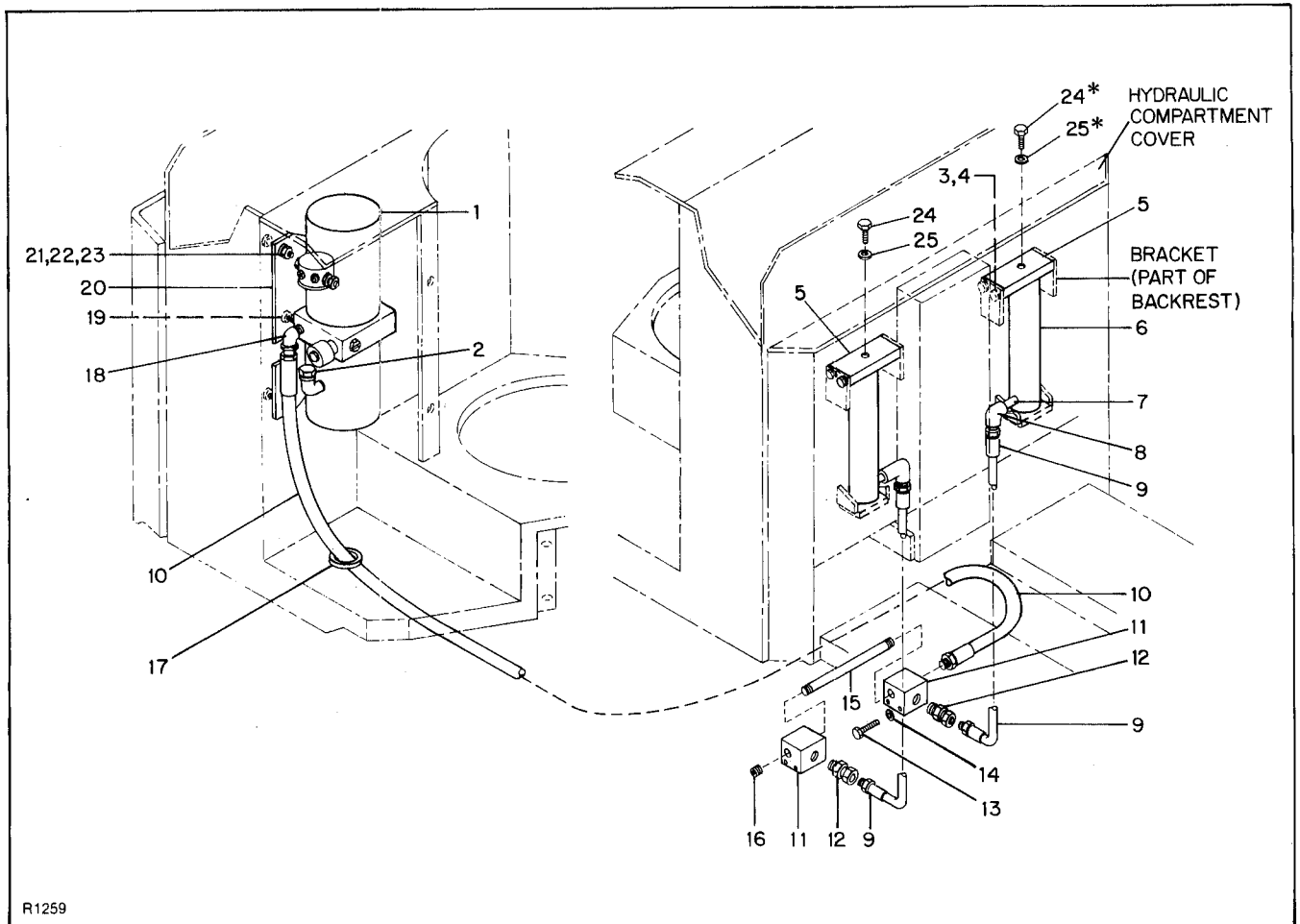


Figure 3. Hydraulic System

