

Rasmussen Gas Logs & Grills
12028 E. Philadelphia St., Whittier, CA 90601 U.S.A

(562) 696-8718
orders@rasmussen.biz
Quality Products Since 1907

FAX: (562) 698-3510
www.rasmussen.biz

This price list supersedes all previous price lists. All prices are US\$.
Prices are subject to change without notice. Items are subject to availability.
Possession of this price list confers no right to purchase at these prices.
M.S.R.P = Manufacturer's Suggested Retail Price

PLEASE NOTE - Covers and Carrying Bags are recommended to protect grills when not in use. They are offered as accessories (not included with any grills except bags with IR17 Anywheres).

Type	Item No.	Description	Infrared Burner	Convection Burner	Total Grilling Area	Effective Grilling Area	Total BTU Input	M.S.R.P.	
Portable		**Note: IR17B, IR17BWR, IR17M and IR17MWR include a carrying bag.**							
Grill	SOL-IR8A	Solaire Anywhere! Mini Personal Infrared Grill, 24 ga. 304 SS	1	-	48	48	9K	269.00	
Bag	SOL-8-11	Carrying Bag for Solaire Anywhere Mini Portable Infrared Grill							64.00
Access.	SOL-SMNGC	Nat. Gas Conversion for IR8A. Includes orificed valve, regulator, 12ft. hose with quick disconnect							149.00
Access.	SOL-SMLPC	Low Pressure LP conversion kit for IR8A. Includes orificed valve, 12ft. hose with quick disconnect							139.00
Grill	SOL-EV17A	Solaire Everywhere! Portable Infrared Grill, 24 ga. 304 SS	1	-	140	140	14K	399.00	
Grill	SOL-IR17B	Solaire Anywhere! Portable Infrared Grill, 20 ga. 304 SS w/Carry Bag	1	-	140	140	14K	499.00	
Grill	SOL-IR17BWR	Solaire Anywhere! 20 ga. 304 SS with Warming Rack & Carrying Bag	1	-	207	140	14K	569.00	
Grill	SOL-IR17M	Solaire Anywhere! Portable Infrared Grill, 316 Marine Grade SS w/Bag	1	-	140	140	14K	759.00	
Grill	SOL-IR17MWR	Solaire Anywhere! 316 Marine Grade SS with Warming Rack & Bag	1	-	207	140	14K	839.00	
Bag	SOL-17-11	Carrying Bag for Solaire Anywhere and Everywhere Portable Infrared Grills							73.00
Access.	SOL-PST17A	Stand, Stainless Steel, for EV17A, IR17B and IR17M Portable Infrared Grills							189.00
Access.	SOL-SHLV17A	Side and Front Shelves for use with SOL-PST17A and SOL-SATRI							57.00
Mount	SOL-SATRI	DISCONTINUED Tripod with SS Mount Plate for Anywhere, Everywhere, and AA12A AllAbout							
Mount	SOL-170BR	SS plate to adapt Anywhere, Everywhere and AA12AA to various Magma rail, deck and fishing pole mounts: T10-380, T10-385, T10-390, T10-185, T10-340, T10-321, T10-326, T10-322, T10-327, T10-355, T10-375, T10-360, T10-365.							144.00
Access.	SOL-SAHOSE6	6 Foot Tank Adaptor Hose for 20# LP Tank for use with all Solaire Portables							47.00
Access.	SOL-SANGC	Nat. Gas Conversion for 17B/M & EV17. Incl. orificed valve, regulator, 12ft. hose with quick disconnect							149.00
Access.	SOL-SALPC	Low Pressure LP conversion kit for 17B/M & EV17. Incl. orificed valve, 12ft. hose with quick disconnect							139.00

Table Top		For tailgate, table top and demonstration use.							
Grill	SOL-AA12A-LP	Solaire AllAbout Single Bumer Table Top Grill, 304 SS	1	-	158	112	12K	679.00	
Access.	SOL-AA12NGC	Nat. Gas Conversion for AA12A. Includes orifice, regulator, 12ft. hose with quick disconnect							120.00
Mount	SOL-SATRI	DISCONTINUED Tripod with SS Mount Plate for Anywhere, Everywhere, and AA12A AllAbout							
Grill/Cart	SOL-AA23AGC-LP	Solaire AllAbout Two Bumer Table Top Grill installed on Cart, 304 SS	2	-	349	253	24K	1,489.00	
Grill	SOL-AA23A-LP	Solaire AllAbout Two Bumer Table Top Grill, 304 SS	2	-	349	253	24K	989.00	
Cart	SOL-AA23GC	Cart for SOL-AA23A. Stainless Steel. Folding Side Shelves, Tool Drawer. Knock-down (assembly required).							449.00
Access.	SOL-HC-21PB	Cover for SOL-AA23A on Cart, UltraTexHyde Material, Embossed Logo							203.00
Mount	SOL-AATRI	DISCONTINUED . Tripod with SS Mount Plate for AA23A							
Access.	SOL-AA23NGC	Nat. Gas Conversion for AA23A. Includes orifices, regulator, 12ft. hose with quick disconnect							126.00
Grill/Cart	SOL-AA34AGC-LP	Solaire AllAbout Three Bumer Table Top Grill installed on Cart, 304 SS	3	-	561	387	36K	1,879.00	
Access.	SOL-AA34NGC	Nat. Gas Conversion for AA34A. Includes orifices, regulator, 12ft. hose with quick disconnect							145.00

15									
Grill	SOL-IRBQ-15GIR-LP	Solaire Accent™ Infrared Grill, for table top, built-in or demonstrator use. Full-featured single bumer grill with oven hood and warming rack. Includes NG orifice.			240	150	12K	1,379.00	
Mount	SOL-IRIJ-15	Self-Rimming Insulated Jacket for Built-in							503.00

This price list supersedes all previous price lists. All prices are US\$.
Prices are subject to change without notice. Items are subject to availability.
Possession of this price list confers no right to purchase at these prices.

M.S.R.P = Manufacturer's Suggested Retail Price

21		Please suffix Item No. with "LP" for Propane (includes NG orifices) or "NG" for Natural Gas. eg."SOL-IRBQ-21GIR-LP"						
Type	Item No.	Description	Infrared Burner	Convection Burner	Total Grilling Area	Effective Grilling Area	Total BTU Input	M.S.R.P.
Grill Head	SOL-IRBQ-21GIR-	21" Infrared Built-In Grill	2	-	359	222	18K	1,459.00
Grill Head	SOL-IRBQ-21GVI-	21" InfraVection Built-In Grill	1	1	359	222	18K	1,459.00
Grill Head	SOL-IRBQ-21G-	21" Convection Built-In Grill	-	2	359	222	18K	1,459.00
Grill/Pedestal	SOL-IRBQ-21GIR-PED-	21" Infrared Pedestal Grill	2	-	359	222	18K	2,019.00
Grill/Pedestal	SOL-IRBQ-21GVI-PED-	21" InfraVection Pedestal Grill	1	1	359	222	18K	2,019.00
Grill/Pedestal	SOL-IRBQ-21G-PED-	21" Convection Pedestal Grill	-	2	359	222	18K	2,019.00
Mount	SOL-IRIJ-21	Self-Rimming Insulated Jacket for Built-in						780.00
Mount	SOL-AG-21C	Angular Pedestal Base for 21G						599.00
Access.	SOL-IRBT-21	BBQ Tray -Stainless Steel						87.00
Access.	SOL-IRGP-21	Griddle Plate - Stainless Steel						277.00
Access.	SOL-IRWS-21	Wood Chip Smoker Box - Stainless Steel						161.00
Access.	SOL-CZ21	Convect. Conv. Kit-SS U-bumer, Vaporizer						201.00
Access.	SOL-2121R	Infrared Conversion Kit - Bumer and Screen						201.00
Access.	SOL-HC-21	Cover for 21" Built-In Grill, UltraTexHyde Material, Embossed Logo						123.00
Access.	SOL-HC-21PB	Cover for 21" Pedestal Model, UltraTexHyde Material, Embossed Logo						203.00
Parts	SOL-LP-NG-21	LP to NG Conversion Kit (orifices) for 21"						23.00
Parts	SOL-NG-LP-21	NG to LP Conversion Kit (orifices, fitting, reg/hose) for 21"						157.00

21XL		Please suffix Item No. with "LP" for Propane (includes NG orifices) or "NG" for Natural Gas. eg."SOL-IRBQ-21GIRXL-LP"						
Type	Item No.	Description	Infrared Burner	Convection Burner	Total Grilling Area	Effective Grilling Area	Total BTU Input	M.S.R.P.
Grill Head	SOL-IRBQ-21GIRXL-	21" Deluxe Infrared Built-In Grill	2	-	403	270	24K	1,899.00
Grill Head	SOL-IRBQ-21GVIXL-	21" Deluxe InfraVection Built-In Grill	1	1	403	270	24K	1,899.00
Grill Head	SOL-IRBQ-21GXL-	21" Deluxe Convection Built-In Grill	-	2	403	270	24K	1,899.00
Grill/Pedestal	SOL-IRBQ-21GIRXL-PED-	21" Deluxe Infrared Pedestal Grill	2	-	403	270	24K	2,509.00
Grill/Pedestal	SOL-IRBQ-21GVIXL-PED-	21" Deluxe InfraVection Pedestal Grill	1	1	403	270	24K	2,509.00
Grill/Pedestal	SOL-IRBQ-21GXL-PED-	21" Deluxe Convection Pedestal Grill	-	2	403	270	24K	2,509.00
Mount	SOL-IRIJ-21XL	Self-Rimming Insulated Jacket for Built-in						827.00
Mount	SOL-AG-21CXL	Angular Pedestal Base for 21GXL						665.00
Access.	SOL-IRBT-21XL	BBQ Tray - Stainless Steel						92.00
Access.	SOL-IRGP-21XL	Griddle Plate - Stainless Steel						311.00
Access.	SOL-IRWS-21XL	Wood Chip Smoker Box - Stainless Steel						180.00
Access.	SOL-CZ21XL	Convection Conversion Kit-SS U-bumer, Vaporizer						214.00
Access.	SOL-2221R	Infrared Conversion Kit - Bumer and Screen						214.00
Access.	SOL-HC-21XL	Cover for 21GXL Built-In Grill, UltraTexHyde Material, Embossed Logo						133.00
Access.	SOL-HC-21PBXL	Cover for 21GXL Pedestal Model, UltraTexHyde Material, Embossed Logo						220.00
Parts	SOL-LP-NG-21XL	LP to NG Conversion Kit (orifices) for 21XL						23.00
Parts	SOL-NG-LP-21XL	NG to LP Conversion Kit (orifices, fitting, reg/hose) for 21XL						157.00

27		Please suffix Item No. with "LP" for Propane (includes NG orifices) or "NG" for Natural Gas. eg."SOL-AGBQ-27GIR-LP"						
Type	Item No.	Description	Infrared Burner	Convection Burner	Total Grilling Area	Effective Grilling Area	Total BTU Input	M.S.R.P.
Grill Head	SOL-AGBQ-27GIR-	27" Infrared Built-In Grill	2	-	473	293	24K	2,119.00
Grill Head	SOL-AGBQ-27GVI-	27" InfraVection Built-In Grill	1	1	473	293	24K	2,119.00
Grill Head	SOL-AGBQ-27G-	27" Convection Built-In Grill	-	2	473	293	24K	2,119.00
Grill/Pedestal	SOL-AGBQ-27GIR-PED-	27" Infrared Angular Pedestal Grill	2	-	473	293	24K	2,799.00
Grill/Pedestal	SOL-AGBQ-27GVI-PED-	27" InfraVection Angular Pedestal Grill	1	1	473	293	24K	2,799.00
Grill/Pedestal	SOL-AGBQ-27G-PED-	27" Convection Angular Pedestal Grill	-	2	473	293	24K	2,799.00
Mount	SOL-IRIJ-27	Self-Rimming Insulated Jacket for Built-in						858.00
Mount	SOL-AG-27C	Angular Pedestal Base for 27G						727.00
Mount	SOL-BDP-27	Bolt-Down Post for 27G						869.00
Mount	SOL-IGP-27	In-Ground Post for 27G						869.00
Access.	SOL-IRBT-27	BBQ Tray -Stainless Steel						98.00
Access.	SOL-IRGP-27	Griddle Plate - Stainless Steel						325.00
Access.	SOL-IRWS-27	Wood Chip Smoker Box - Stainless Steel						197.00
Access.	SOL-IRSF-27	Steamer / Fryer - Stainless Steel						497.00
Access.	SOL-CZ27	Convection Conversion Kit-SS U-bumer, Vaporizer						231.00
Access.	SOL-2721R	Infrared Conversion Kit - Bumer and Screen						231.00

This price list supersedes all previous price lists. All prices are US\$.
Prices are subject to change without notice. Items are subject to availability.
Possession of this price list confers no right to purchase at these prices.

M.S.R.P = Manufacturer's Suggested Retail Price

27		Please suffix Item No. with "LP" for Propane (includes NG orifices) or "NG" for Natural Gas. eg. "SOL-AGBQ-27GIR-LP"						
Type	Item No.	Description	Infrared Burner	Convection Burner	Total Grilling Area	Effective Grilling Area	Total BTU Input	M.S.R.P.
Access.	SOL-HC-27	Cover for 27" Built-In Grill, UltraTexHyde Material, Embossed Logo						139.00
Access.	SOL-HC-27PB	Cover for 27" Pedestal Model, UltraTexHyde Material, Embossed Logo						229.00
Parts	SOL-LP-NG-27	LP to NG Conversion Kit (orifices) for 27"						23.00
Parts	SOL-NG-LP-27	NG to LP Conversion Kit (orifices, fitting, reg/hose) for 27"						157.00

27XL		Please suffix Item No. with "LP" for Propane (includes NG orifices) or "NG" for Natural Gas. eg. "SOL-AGBQ-27GIRXL-LP"						
Type	Item No.	Description	Infrared Burner	Convection Burner	Total Grilling Area	Effective Grilling Area	Total BTU Input	M.S.R.P.
Grill Head	SOL-IRBQ-27GIRXL-	27" Deluxe Infrared Built-In Grill	2	-	542	362	32K	2,649.00
Grill Head	SOL-IRBQ-27GVIXL-	27" Deluxe InfraVection Built-In Grill	1	1	542	362	32K	2,649.00
Grill Head	SOL-IRBQ-27GXL-	27" Deluxe Convection Built-In Grill	-	2	542	362	32K	2,649.00
Grill/Pedestal	SOL-IRBQ-27GIRXL-PED-	27" Deluxe Infrared Angular Pedestal Grill	2	-	542	362	32K	3,389.00
Grill/Pedestal	SOL-IRBQ-27GVIXL-PED-	27" Deluxe InfraVection Angular Pedestal Grill	1	1	542	362	32K	3,389.00
Grill/Pedestal	SOL-IRBQ-27GXL-PED-	27" Deluxe Convection Angular Pedestal Grill	-	2	542	362	32K	3,389.00
Grill/Cart	SOL-IRBQ-27GIRXLC-	27" Deluxe Infrared Cart Grill - Single Door	2	-	542	362	32K	3,659.00
Grill/Cart	SOL-IRBQ-27GVIXLC-	27" Deluxe InfraVection Cart Grill - Single Door	1	1	542	362	32K	3,659.00
Grill/Cart	SOL-IRBQ-27GXLC-	27" Deluxe Convection Cart Grill - Single Door	-	2	542	362	32K	3,659.00
Grill Head	SOL-AGBQ-27GIRXL-	27" Deluxe Infrared Built-In Grill w/Rotiss.	2	-	542	362	44K	3,199.00
Grill Head	SOL-AGBQ-27GVIXL-	27" Deluxe InfraVection Built-In Grill w/Rotiss.	1	1	542	362	44K	3,199.00
Grill Head	SOL-AGBQ-27GXL-	27" Deluxe Convection Built-In Grill w/Rotiss.	-	2	542	362	44K	3,199.00
Grill/Pedestal	SOL-AGBQ-27GIRXL-PED	27" Deluxe Infrared Angular Pedestal Grill w/Rotisserie Bumer & Kit	2	-	542	362	44K	3,939.00
Grill/Pedestal	SOL-AGBQ-27GVIXL-PED	27" Deluxe InfraVection Angular Pedestal Grill w/Rotiss. Bumer & Kit	1	1	542	362	44K	3,939.00
Grill/Pedestal	SOL-AGBQ-27GXL-PED-	27" Deluxe Convection Angular Pedestal Grill w/Rotiss. Bumer & Kit	-	2	542	362	44K	3,939.00
Grill/Cart	SOL-AGBQ-27GIRXLC-	27" Deluxe Infrared Cart Grill - Single Door w/Rotisserie Bumer & Kit	2	-	542	362	44K	4,219.00
Grill/Cart	SOL-AGBQ-27GVIXLC-	27" Deluxe InfraVection Cart Grill - Single Door w/Rotiss. Bumer & Kit	1	1	542	362	44K	4,219.00
Grill/Cart	SOL-AGBQ-27GXLC-	27" Deluxe Convection Cart Grill - Single Door w/Rotiss. Bumer & Kit	-	2	542	362	44K	4,219.00
Mount	SOL-IRIJ-27XL	Self-Rimming Insulated Jacket for Built-in						921.00
Mount	SOL-AG-27CXL	Angular Pedestal Base for 27GXL						804.00
Mount	SOL-AG-27SBXL	Standard Cart Base for 27GXL with front door						1,095.00
Mount	SOL-BDP-27XL	Bolt-Down Post for 27GXL						1,029.00
Mount	SOL-IGP-27XL	In-Ground Post for 27GXL						1,029.00
Access.	SOL-IRBT-27XL	BBQ Tray - Stainless Steel						108.00
Access.	SOL-IRGP-27XL	Griddle Plate - Stainless Steel						346.00
Access.	SOL-IRWS-27XL	Wood Chip Smoker Box - Stainless Steel						207.00
Access.	SOL-IRSF-27XL	Steamer / Fryer - Stainless Steel						554.00
Access.	SOL-CZ27XL	Convection Conversion Kit - SS U-bumer, Vaporizer						252.00
Access.	SOL-2821R	Infrared Conversion Kit - Bumer and Screen						252.00
Access.	SOL-HC-27XL	Cover for 27" GXL Built-In Grill, UltraTexHyde Material, Embossed Logo						147.00
Access.	SOL-HC-27PBXL	Cover for 27" GXL Pedestal Model, UltraTexHyde Material, Embossed Logo						231.00
Parts	SOL-LP-NG-27XL	LP to NG Conversion Kit (orifices) for 27" XL						31.00
Parts	SOL-NG-LP-27XL	NG to LP Conversion Kit (orifices, fitting, reg/hose)						169.00

Misc. For All Grills

Type	Item No.	Description	MSRP
Access.	SOL-6005	Stainless Steel Rotisserie Kit for 30" and smaller grills	389.00
Access.	SOL-6009	Stainless Steel Rotisserie Kit for 36" grills	434.00
Access.	SOL-6020	Stainless Steel Rotisserie Kit for 42" grills	446.00
Access.	SOL-6011	Stainless Steel Rotisserie Kit for 56T grills	492.00
Access.	SOL-SC1	SS Grid Scraper - for Solaire Anywhere with 15 grid grates (2006 and later) and all large grills	21.00
Access.	SOL-APRON-R1	Solaire Full Length Cotton Apron - Red	39.00
Access.	SOL-MITT-R1	Solaire Full Length Grilling Mitt - Red	21.00
Access.	SOL-TIMER-1	DISCONTINUED Solaire Minute Timer	
Access.	SOL-GASTIMER-3	3 Hour Spring-wound Gas Timer - 1/2" Inlet, 1/2" Outlet; 100,000 BTU/hour capacity	93.00
Access.	SOL-12HOSE12	1/2" x 12 Foot Q.D. Flexible Hose - 160M BTU capacity	184.00
Parts	SOL-6015R	Knob, metal, for all grills	28.00
Parts	SOL-LTNB-1	Grill Light, battery operated, no bracket	128.00
Parts	SOL-LTWB-1	Grill Light, battery operated, with bracket	157.00

This price list supersedes all previous price lists. All prices are US\$.
Prices are subject to change without notice. Items are subject to availability.
Possession of this price list confers no right to purchase at these prices.
M.S.R.P = Manufacturer's Suggested Retail Price

			Infrared Burner	Convection Burner	Total Grilling Area	Effective Grilling Area	Total BTU Input	M.S.R.P.	
30	Please suffix Item No. with "LP" for Propane (includes NG orifices) or "NG" for Natural Gas. eg. "SOL-IRBQ-30IR-LP"								
Type	Item No.	Description							
Grill Head	SOL-IRBQ-30IR-	30" Infrared Built-In Grill	2	-	703	455	55K	4,019.00	
Grill Head	SOL-IRBQ-30VI-	30" InfraVection Built-In Grill	1	1	703	455	55K	4,019.00	
Grill Head	SOL-IRBQ-30-	30" Convection Built-In Grill	-	2	703	455	55K	4,019.00	
Grill/Cart	SOL-IRBQ-30CXIR-	30" Infrared Premium Cart Grill (two drawers, tank/trash pull out)	2	-	703	455	55K	5,749.00	
Grill/Cart	SOL-IRBQ-30CXVI-	30" InfraVection Premium Cart Grill (two drawers, tank/trash pull out)	1	1	703	455	55K	5,749.00	
Grill/Cart	SOL-IRBQ-30CX-	30" Convection Premium Cart Grill (two drawers, tank/trash pull out)	-	2	703	455	55K	5,749.00	
Grill/Cart	SOL-IRBQ-30CIR-	30" Infrared Standard Cart Grill - Two Doors	2	-	703	455	55K	5,059.00	
Grill/Cart	SOL-IRBQ-30CVI-	30" InfraVection Standard Cart Grill - Two Doors	1	1	703	455	55K	5,059.00	
Grill/Cart	SOL-IRBQ-30C-	30" Convection Standard Cart Grill - Two Doors	-	2	703	455	55K	5,059.00	
Grill Head	SOL-AGBQ-30IR-	30" Infrared Built-In Grill w/Rotiss.	2	-	703	455	69K	4,569.00	
Grill Head	SOL-AGBQ-30VI-	30" InfraVection Built-In Grill w/Rotiss.	1	1	703	455	69K	4,569.00	
Grill Head	SOL-AGBQ-30-	30" Convection Built-In Grill w/Rotiss.	-	2	703	455	69K	4,569.00	
Grill/Cart	SOL-AGBQ-30CXIR-	30" Infrared Premium Cart Grill w/Rotiss.(two drawers, tank/trash pull out)	2	-	703	455	69K	6,299.00	
Grill/Cart	SOL-AGBQ-30CXVI-	30" InfraVection Premium Cart Grill w/Rotiss.(two drawers, tank/trash p/o)	1	1	703	455	69K	6,299.00	
Grill/Cart	SOL-AGBQ-30CX-	30" Convection Premium Cart Grill w/Rotiss. (two drawers, tank/trash p/o)	-	2	703	455	69K	6,299.00	
Grill/Cart	SOL-AGBQ-30CIR-	30" Infrared Standard Cart Grill w/Rotiss. - Two Doors	2	-	703	455	69K	5,609.00	
Grill/Cart	SOL-AGBQ-30CVI-	30" InfraVection Standard Cart Grill w/Rotiss. - Two Doors	1	1	703	455	69K	5,609.00	
Grill/Cart	SOL-AGBQ-30C-	30" Convection Standard Cart Grill w/Rotiss. - Two Doors	-	2	703	455	69K	5,609.00	
Mount	SOL-IRIJ-30	Self-Rimming Insulated Jacket for Built-in							995.00
Mount	SOL-BDP-30	Bolt-Down Patio Base for 30" Grills							1,319.00
Mount	SOL-IGP-30	In-Ground Post for 30" Grills							1,319.00
Mount	SOL-IR-30CX	Premium Cart Only for 30" Grills (two drawers, tank/trash pull out)							1,449.00
Mount	SOL-IR-30C	Standard Cart Only for 30" Grills - Two Doors							1,099.00
Access.	SOL-HC-30	Cover for 30" Built-In Grill, UltraTexHyde Material, Embossed Logo							173.00
Access.	SOL-HC-30C	Cover for 30" Cart Model, UltraTexHyde Material, Embossed Logo							230.00
Access.	SOL-IRVC-30SB	Cover for 30" Grill with Side Bumer, Vinyl Material, Silk-screened Logo							184.00
Parts	SOL-LP-NG-30	LP to NG Conversion Kit (orifices) for 30" IRBQ							23.00
Parts	SOL-LP-NG-30IV	LP to NG Conversion Kit (orifices) for 30" AGBQ							31.00
Parts	SOL-NG-LP-30	NG to LP Conversion Kit (orifices, fitting, reg/hose) - 30" IRBQ							157.00
Parts	SOL-NG-LP-30IV	NG to LP Conv. Kit (orifices, fitting, reg/hose) - 30" AGBQ							165.00

Accessories for 30", 36", 42" and 56" Grills

Type	Item No.	Description	MSRP
Access.	SOL-IRBT-BQ	Stainless Steel BBQ Tray	131.00
Access.	SOL-IRGP-BQ	Stainless Steel Griddle Plate	369.00
Access.	SOL-IRWS-BQ	Stainless Steel Wood Chip Smoker	226.00
Access.	SOL-IRSF-BQ	Stainless Steel Steamer / Fryer	579.00
Access.	SOL-IRWR-BQ	Stainless Steel Wok Ring - replaces cooking grid	165.00
Access.	SOL-CZAG	Convection Conversion Kit - SS U-bumer, Vaporizer	290.00
Access.	SOL-6021R	Infrared Conversion Kit - Bumer and Screen	290.00
Access.	SOL-TSK	Tank Slide Out Kit. Add to any Solaire Standard Cart with captive nuts in floor of cart	145.00

Side Burner

Side Bumer	SOL-SSB-14-NG	Single Built-In Side Bumer - Natural Gas, 17,000 BTU/hr	1,029.00
Side Bumer	SOL-SSB-14-LP	Single Built-In Side Bumer - LP Gas, 17,000 BTU/hr	1,029.00
Access.	SOL-HC-S14A2	Cover for Single Built-In Side Bumer, UltraTexHyde Material, Embossed Logo	112.00
Side Bumer	SOL-IRSB-14-NG	Double Built-In Side Bumer - Natural Gas, 34,000 BTU/hr	1,449.00
Side Bumer	SOL-IRSB-14-LP	Double Built-In Side Bumer - LP Gas, 34,000 BTU/hr	1,449.00
Access.	SOL-HC-14	Cover for Double Built-In Side Bumer, UltraTexHyde Material, Embossed Logo	118.00
Side Bumer	SOL-IRSB-14SM-NG	Double Side Mount Side Bumer - Natural Gas - for 30" and larger cart models	1,869.00
Side Bumer	SOL-IRSB-14SM-LP	Double Side Mount Side Bumer - LP Gas - for 30" and larger cart models	1,869.00
Access.	SOL-IRWR-2SB	Stainless Steel Wok Ring for Side Bumer Only	98.00
Parts	SOL-6098IR	NG to LP Conversion Kit (includes hose/reg) for Side Bumer	230.00
Parts	SOL-SBORIF-LP	2-Side Bumer, 2-Simmer oifices for LP Gas	55.00
Parts	SOL-SBORIF-NG	2-Side Bumer, 2-Simmer oifices for NG	55.00

This price list supersedes all previous price lists. All prices are US\$.
Prices are subject to change without notice. Items are subject to availability.
Possession of this price list confers no right to purchase at these prices.
M.S.R.P = Manufacturer's Suggested Retail Price

36		Please suffix Item No. with "LP" for Propane (includes NG orifices) or "NG" for Natural Gas. eg."SOL-AGBQ-36CXIR-NG"							
Type	Item No.	Description	Infrared Burner	Convection Burner	Total Grilling Area	Effective Grilling Area	Total BTU Input	M.S.R.P.	
Grill Head	SOL-IRBQ-36IR-	36" Infrared Built-In Grill	3	-	813	560	74K	5,659.00	
Grill Head	SOL-IRBQ-36VI-	36" InfraVection Built-In Grill	2	1	813	560	74K	5,659.00	
Grill Head	SOL-IRBQ-36-	36" Convection Built-In Grill	1	2	813	560	74K	5,659.00	
Grill/Cart	SOL-IRBQ-36CXIR-	36" Infrared Premium Cart Grill (two drawers, tank/trash pull out)	3	-	813	560	74K	7,589.00	
Grill/Cart	SOL-IRBQ-36CXVI-	36" InfraVection Premium Cart Grill (two drawers, tank/trash pull out)	2	1	813	560	74K	7,589.00	
Grill/Cart	SOL-IRBQ-36CX-	36" Convection Premium Cart Grill (two drawers, tank/trash pull out)	1	2	813	560	74K	7,589.00	
Grill/Cart	SOL-IRBQ-36CIR-	36" Infrared Standard Cart Grill - Two Doors	3	-	813	560	74K	6,979.00	
Grill/Cart	SOL-IRBQ-36CVI-	36" InfraVection Standard Cart Grill - Two Doors	2	1	813	560	74K	6,979.00	
Grill/Cart	SOL-IRBQ-36C-	36" Convection Standard Cart Grill - Two Doors	1	2	813	560	74K	6,979.00	
Grill Head	SOL-AGBQ-36IR-	36" Infrared Built-In Grill w/Rotiss.	3	-	813	560	90K	6,419.00	
Grill Head	SOL-AGBQ-36VI-	36" InfraVection Built-In Grill w/Rotiss.	2	1	813	560	90K	6,419.00	
Grill Head	SOL-AGBQ-36-	36" Convection Built-In Grill w/Rotiss.	1	2	813	560	90K	6,419.00	
Grill/Cart	SOL-AGBQ-36CXIR-	36" Infrared Premium Cart Grill w/Rotiss. (two drawers, tank/trash p.o.)	3	-	813	560	90K	8,309.00	
Grill/Cart	SOL-AGBQ-36CXVI-	36" InfraVection Premium Cart Grill w/Rotiss(two drawers, tank/trash p.o.)	2	1	813	560	90K	8,309.00	
Grill/Cart	SOL-AGBQ-36CX-	36" Convection Premium Cart Grill w/Rotiss (two drawers, tank/trash p.o.)	1	2	813	560	90K	8,309.00	
Grill/Cart	SOL-AGBQ-36CIR-	36" Infrared Standard Cart Grill w/Rotiss. - Two Doors	3	-	813	560	90K	7,689.00	
Grill/Cart	SOL-AGBQ-36CVI-	36" InfraVection Standard Cart Grill w/Rotiss. - Two Doors	2	1	813	560	90K	7,689.00	
Grill/Cart	SOL-AGBQ-36C-	36" Convection Standard Cart Grill w/Rotiss. - Two Doors	1	2	813	560	90K	7,689.00	
Mount	SOL-IRIJ-36	Self-Rimming Insulated Jacket for Built-in						1,121.00	
Mount	SOL-IR-36CX	Premium Cart Only for 36" Grills (two drawers, tank/trash pull out)						2,024.00	
Mount	SOL-IR-36C	Standard Cart Only for 36" Grills - Two Doors						1,373.00	
Access.	SOL-HC-36	Cover for 36" Built-In Grill, UltraTexHyde Material, Embossed Logo						185.00	
Access.	SOL-HC-36C	Cover for 36" Cart Model, UltraTexHyde Material, Embossed Logo						247.00	
Parts	SOL-LP-NG-36	LP to NG Conversion Kit (orifices) for 36" IRBQ						39.00	
Parts	SOL-LP-NG-36IV	LP to NG Conversion Kit (orifices) for 36" AGBQ						45.00	
Parts	SOL-NG-LP-36	NG to LP Conversion Kit (orifices, fitting, reg/hose) - 36" IRBQ						167.00	
Parts	SOL-NG-LP-36IV	NG to LP Conversion Kit (orifices, fitting, reg/hose) - 36" AGBQ						176.00	

42		Please suffix Item No. with "LP" for Propane (includes NG orifices) or "NG" for Natural Gas. eg."SOL-AGBQ-42IR-LP"							
Type	Item No.	Description	Infrared Burner	Convection Burner	Total Grilling Area	Effective Grilling Area	Total BTU Input	M.S.R.P.	
Grill Head	SOL-IRBQ-42IR-	42" Infrared Built-In Grill	3	-	1,027	667	82K	6,469.00	
Grill Head	SOL-IRBQ-42VI-	42" InfraVection Built-In Grill	2	1	1,027	667	82K	6,469.00	
Grill Head	SOL-IRBQ-42VV-	42" InfraVection Built-In Grill	1	2	1,027	667	82K	6,469.00	
Grill Head	SOL-IRBQ-42-	42" Convection Built-In Grill	-	3	1,027	667	82K	6,469.00	
Grill/Cart	SOL-IRBQ-42CXIR-	42" Infrared Premium Cart Grill (two drawers, tank/trash pull out)	3	-	1,027	667	82K	8,919.00	
Grill/Cart	SOL-IRBQ-42CXVI-	42" InfraVection Premium Cart Grill (two drawers, tank/trash pull out)	2	1	1,027	667	82K	8,919.00	
Grill/Cart	SOL-IRBQ-42CXVV-	42" InfraVection Premium Cart Grill (two drawers, tank/trash pull out)	1	2	1,027	667	82K	8,919.00	
Grill/Cart	SOL-IRBQ-42CX-	42" Convection Premium Cart Grill (two drawers, tank/trash pull out)	-	3	1,027	667	82K	8,919.00	
Grill/Cart	SOL-IRBQ-42CIR-	42" Infrared Standard Cart Grill - Two Doors	3	-	1,027	667	82K	8,189.00	
Grill/Cart	SOL-IRBQ-42CVI-	42" InfraVection Standard Cart Grill - Two Doors	2	1	1,027	667	82K	8,189.00	
Grill/Cart	SOL-IRBQ-42CVV-	42" InfraVection Standard Cart Grill - Two Doors	1	2	1,027	667	82K	8,189.00	
Grill/Cart	SOL-IRBQ-42C-	42" Convection Standard Cart Grill - Two Doors	-	3	1,027	667	82K	8,189.00	
Grill Head	SOL-AGBQ-42IR-	42" Infrared Built-In Grill with Rotisserie	3	-	1,027	667	100K	7,229.00	
Grill Head	SOL-AGBQ-42VI-	42" InfraVection Built-In Grill with Rotisserie	2	1	1,027	667	100K	7,229.00	
Grill Head	SOL-AGBQ-42VV-	42" InfraVection Built-In Grill with Rotisserie	1	2	1,027	667	100K	7,229.00	
Grill Head	SOL-AGBQ-42-	42" Convection Built-In Grill with Rotisserie	-	3	1,027	667	100K	7,229.00	
Grill/Cart	SOL-AGBQ-42CXIR-	42" Infrared Premium Cart Grill with Rotiss (two drawers, tank/trash p.o.)	3	-	1,027	667	100K	9,659.00	
Grill/Cart	SOL-AGBQ-42CXVI-	42" InfraVection Premium Cart Grill w/ Rotis(two drawers, tank/trash p.o.)	2	1	1,027	667	100K	9,659.00	
Grill/Cart	SOL-AGBQ-42CXVV-	42" InfraVection Premium Cart Grill w/ Rotis(two drawers, tank/trash p.o.)	1	2	1,027	667	100K	9,659.00	
Grill/Cart	SOL-AGBQ-42CX-	42" Convection Premium Cart Grill w/Rotis (two drawers, tank/trash p.o.)	-	3	1,027	667	100K	9,659.00	
Grill/Cart	SOL-AGBQ-42CIR-	42" Infrared Cart Standard Grill with Rotiss. - Two Doors	3	-	1,027	667	100K	8,939.00	
Grill/Cart	SOL-AGBQ-42CVI-	42" InfraVection Standard Cart Grill w/Rotiss. - Two Doors	2	1	1,027	667	100K	8,939.00	
Grill/Cart	SOL-AGBQ-42CVV-	42" InfraVection Standard Cart Grill w/Rotiss. - Two Doors	1	2	1,027	667	100K	8,939.00	
Grill/Cart	SOL-AGBQ-42C-	42" Convection Standard Cart Grill w/Rotiss. - Two Doors	-	3	1,027	667	100K	8,939.00	

This price list supersedes all previous price lists. All prices are US\$.
 Prices are subject to change without notice. Items are subject to availability.
 Possession of this price list confers no right to purchase at these prices.
 M.S.R.P = Manufacturer's Suggested Retail Price

42	Please suffix Item No. with "LP" for Propane (includes NG orifices) or "NG" for Natural Gas. eg. "SOL-AGBQ-42IR-LP"						Total BTU Input	M.S.R.P.
	Type	Item No.	Description	Infrared Burner	Convection Burner	Total Grilling Area		
	Mount	SOL-IRIJ-42	Self-Rimming Insulated Jacket for Built-in					1,205.00
	Mount	SOL-IR-42CX	Premium Cart Only for 42" Grills (two drawers, tank/trash pull out)					2,539.00
	Mount	SOL-IR-42C	Standard Cart Only for 42" Grills					1,815.00
	Access.	SOL-HC-42	Cover for 42" Built-In Grill, UltraTexHyde Material, Embossed Logo					200.00
	Access.	SOL-HC-42C	Cover for 42" Cart Models, UltraTexHyde Material, Embossed Logo					259.00
	Access.	SOL-HC-56C	Cover for 56" Grill or 42" Grill w/Side Burner, UltraTexHyde Material, Embossed Logo					285.00
	Parts	SOL-LP-NG-42IV	LP to NG Conversion Kit (orifices) for 42" & 56" AGBQ					45.00
	Parts	SOL-NG-LP-42IV	NG to LP Conversion Kit (orifices, fitting, reg/hose) - 42",56" AGBQ					176.00

56	Please suffix Item No. with "LP" for Propane (includes NG orifices) or "NG" for Natural Gas. eg. "SOL-AGBQ-56TIR-NG"						Total BTU Input	M.S.R.P.	
	Type	Item No.	Description	Infrared Burner	Convection Burner	Total Grilling Area			Effective Grilling Area
	Grill Head	SOL-AGBQ-56IR-	56" Infrared Built-In Grill w/Rotiss. & Dual Side Bumer	3	-	1,027	667	134K	8,589.00
	Grill Head	SOL-AGBQ-56VI-	56" InfraVection Built-In Grill w/Rotiss. & Dual Side Bumer	2	1	1,027	667	134K	8,589.00
	Grill Head	SOL-AGBQ-56VV-	56" InfraVection Built-In Grill w/Rotiss. & Dual Side Bumer	1	2	1,027	667	134K	8,589.00
	Grill Head	SOL-AGBQ-56-	56" Convection Built-In Grill w/Rotiss. & Dual Side Bumer	-	3	1,027	667	134K	8,589.00
	Grill/Cart	SOL-AGBQ-56CXAIR-	56" Infrared Premium Cart (see "A" below) Grill w/Rotiss & Dual Side Bumer	3	-	1,027	667	134K	11,649.00
	Grill/Cart	SOL-AGBQ-56CXAVI-	56" InfraVection Premium Cart ("A" below) Grill w/Rotiss & Dual Side Bumer	2	1	1,027	667	134K	11,649.00
	Grill/Cart	SOL-AGBQ-56CXAVV-	56" InfraVection Premium Cart ("A" below) Grill w/Rotiss & Dual Side Bumer	1	2	1,027	667	134K	11,649.00
	Grill/Cart	SOL-AGBQ-56CXA-	56" Convection Premium Cart ("A" below) Grill w/Rotiss & Dual Side Bumer	-	3	1,027	667	134K	11,649.00
	Grill/Cart	SOL-AGBQ-56CXBIR-	56" Infrared Premium Cart ("B" below) Grill w/Rotiss & Dual Side Bumer	3	-	1,027	667	134K	11,499.00
	Grill/Cart	SOL-AGBQ-56CXBVI-	56" InfraVection Premium Cart ("B" below) Grill w/Rotiss & Dual Side Bumer	2	1	1,027	667	134K	11,499.00
	Grill/Cart	SOL-AGBQ-56CXBVV-	56" InfraVection Premium Cart ("B" below) Grill w/Rotiss & Dual Side Bumer	1	2	1,027	667	134K	11,499.00
	Grill/Cart	SOL-AGBQ-56CXB-	56" Convection Premium Cart ("B" below) Grill w/Rotiss & Dual Side Bumer	-	3	1,027	667	134K	11,499.00
	Grill/Cart	SOL-AGBQ-56CIR-	56" Infrared Standard Cart Grill w/Rotiss. & Dual Side Bumer - 3 doors	3	-	1,027	667	134K	10,759.00
	Grill/Cart	SOL-AGBQ-56CVI-	56" InfraVection Standard Cart Grill w/Rotiss. & Dual Side Bumer - 3 doors	2	1	1,027	667	134K	10,759.00
	Grill/Cart	SOL-AGBQ-56CVV-	56" InfraVection Standard Cart Grill w/Rotiss. & Dual Side Bumer - 3 doors	1	2	1,027	667	134K	10,759.00
	Grill/Cart	SOL-AGBQ-56C-	56" Convection Standard Cart Grill w/Rotiss. & Dual Side Bumer - 3 doors	-	3	1,027	667	134K	10,759.00
	Grill Head	SOL-AGBQ-56TIR-	56" Infrared Built-In All-Grill w/Dual Rotisserie	4	-	1,293	899	138K	9,169.00
	Grill Head	SOL-AGBQ-56TVR-	56" InfraVection Built-In All-Grill w/Dual Rotisserie	3	1	1,293	899	138K	9,169.00
	Grill Head	SOL-AGBQ-56TVI-	56" InfraVection Built-In All-Grill w/Dual Rotisserie	2	2	1,293	899	138K	9,169.00
	Grill Head	SOL-AGBQ-56TVV-	56" InfraVection Built-In All-Grill w/Dual Rotisserie	1	3	1,293	899	138K	9,169.00
	Grill Head	SOL-AGBQ-56T-	56" Convection Built-In All-Grill w/Dual Rotisserie	-	4	1,293	899	138K	9,169.00
	Grill/Cart	SOL-AGBQ-56TCXAIR-	56" Infrared Premium Cart (see "A" below) All-Grill w/Dual Rotisserie	4	-	1,293	899	138K	12,209.00
	Grill/Cart	SOL-AGBQ-56TCXAVR-	56" InfraVection Premium Cart (see "A" below) All-Grill w/Dual Rotisserie	3	1	1,293	899	138K	12,209.00
	Grill/Cart	SOL-AGBQ-56TCXAVI-	56" InfraVection Premium Cart (see "A" below) All-Grill w/Dual Rotisserie	2	2	1,293	899	138K	12,209.00
	Grill/Cart	SOL-AGBQ-56TCXAVV-	56" InfraVection Premium Cart (see "A" below) All-Grill w/Dual Rotisserie	1	3	1,293	899	138K	12,209.00
	Grill/Cart	SOL-AGBQ-56TCXA-	56" Convection Premium Cart (see "A" below) All-Grill w/Dual Rotisserie	-	4	1,293	899	138K	12,209.00
	Grill/Cart	SOL-AGBQ-56TCXBIR-	56" Infrared Premium Cart (see "B" below) All-Grill w/Dual Rotisserie	4	-	1,293	899	138K	12,069.00
	Grill/Cart	SOL-AGBQ-56TCXBVR-	56" InfraVection Premium Cart (see "B" below) All-Grill w/Dual Rotisserie	3	1	1,293	899	138K	12,069.00
	Grill/Cart	SOL-AGBQ-56TCXBVI-	56" InfraVection Premium Cart (see "B" below) All-Grill w/Dual Rotisserie	2	2	1,293	899	138K	12,069.00
	Grill/Cart	SOL-AGBQ-56TCXBVV-	56" InfraVection Premium Cart (see "B" below) All-Grill w/Dual Rotisserie	1	3	1,293	899	138K	12,069.00
	Grill/Cart	SOL-AGBQ-56TCXB-	56" Convection Premium Cart (see "B" below) All-Grill w/Dual Rotisserie	-	4	1,293	899	138K	12,069.00
	Grill/Cart	SOL-AGBQ-56TCIR-	56" Infrared Standard Cart All-Grill w/Dual Rotisserie - 3 doors	4	-	1,293	899	138K	11,329.00
	Grill/Cart	SOL-AGBQ-56TCVR-	56" InfraVection Standard Cart All-Grill w/Dual Rotisserie - 3 doors	3	1	1,293	899	138K	11,329.00
	Grill/Cart	SOL-AGBQ-56TCVI-	56" InfraVection Standard Cart All-Grill w/Dual Rotisserie - 3 doors	2	2	1,293	899	138K	11,329.00
	Grill/Cart	SOL-AGBQ-56TCVV-	56" InfraVection Standard Cart All-Grill w/Dual Rotisserie - 3 doors	1	3	1,293	899	138K	11,329.00
	Grill/Cart	SOL-AGBQ-56TC-	56" Convection Standard Cart All-Grill w/Dual Rotisserie - 3 doors	-	4	1,293	899	138K	11,329.00
	Mount	SOL-IRIJ-56	Self-Rimming Insulated Jacket for Built-in						1,309.00
	A' Mount	SOL-IR-56CXA	"A" Premium Cart Only for 56" and 56T-NG Grills. Two Drawers, Two Doors and Tank/Trash Pull Out						3,169.00
	B' Mount	SOL-IR-56CXB	"B" Premium Cart Only for 56" and 56T Grills. Two Doors and Two Tank/Trash Pull Outs						3,000.00
	Mount	SOL-IR-56C	Standard Cart Only for 56" and 56-T-NG Grills - Three Doors						2,289.00
	Access.	SOL-HC-56	Cover for 56" Built-In Grill with dual Side Burners, UltraTexHyde Material, Embossed Logo						230.00
	Access.	SOL-HC-56C	Cover for 56" Cart Grill with dual Side Burners, UltraTexHyde Material, Embossed Logo						285.00
	Access.	SOL-HC-56T	Cover for 56" Built-In All-Grill, UltraTexHyde Material, Embossed Logo						250.00
	Access.	SOL-HC-56TC	Cover for 56" Cart All-Grill, UltraTexHyde Material, Embossed Logo						305.00

Built-In Accessories for Islands			MSRP
Access.	SOL-IRDT-24	24" Built-In Professional Bartender Center	1,769.00
Access.	SOL-IRVC-DT24	Cover for 24" Built-In Bartender Station, Polyester Material, Embroidered Logo	114.00
Access.	SOL-IRDT-30	30" Built-In Professional Bartender Center	2,499.00
Access.	SOL-IRVC-DT30	DISCONTINUED Cover for 30" Built-In Bartender Station, Polyester Material, Embroidered Logo	
Access.	SOL-IRDT-30C	30" Cart Professional Bartender Center - stand-alone	3,489.00
Access.	SOL-IRVC-DTC30	DISCONTINUED. Cover for 30" Cart Bartender Station, Polyester Material, Embroidered Logo	
Access.	SOL-IRAD-21	21" Access door - 2.5" stand-off depth	463.00
Access.	SOL-IRAD-30	30" Access doors - 2.5" stand-off depth	613.00
Access.	SOL-IRAD-36	36" Access door - 2.5" stand-off depth	739.00
Access.	SOL-IRAD-42	42" Access door - 2.5" stand-off depth	779.00
Access.	SOL-FMD-21	21" Access door - Flush mount	443.00
Access.	SOL-FMD-30	30" Access doors - Flush mount	563.00
Access.	SOL-FMD-36	36" Access doors - Flush mount	649.00
Access.	SOL-FMD-42	42" Access doors - Flush mount	699.00
Access.	SOL-PTH1	Paper Towel Holder	329.00
Access.	SOL-TRE1	Pull-out Trash Enclosure	943.00
Access.	SOL-UD26S	Single Utility Drawer - 15" deep - 0.50 cu. ft. useable drawer volume	439.00
Access.	SOL-UD26D	Single Utility Drawer - 23" deep - 0.81 cu. ft. useable drawer volume	499.00
Access.	SOL-2D14S	2 Drawer Set - 14" Finished Width - 15" Depth - 1.25 cu. ft. useable drawer volume	1,023.00
Access.	SOL-2D14D	2 Drawer Set - 14" Finished Width - 23" Depth - 2.03 cu. ft. useable drawer volume	1,259.00
Access.	SOL-2D21S	2 Drawer Set - 21" Finished Width - 15" Depth - 2.03 cu. ft. useable drawer volume	1,259.00
Access.	SOL-2D21D	2 Drawer Set - 21" Finished Width - 23" Depth - 3.29 cu. ft. useable drawer volume	1,699.00
Access.	SOL-3D14S	3 Drawer Set - 14" Finished Width - 15" Depth - 1.40 cu. ft. useable drawer volume	1,129.00
Access.	SOL-3D14D	3 Drawer Set - 14" Finished Width - 23" Depth - 2.24 cu. ft. useable drawer volume	1,383.00
Access.	SOL-3D21S	3 Drawer Set - 21" Finished Width - 15" Depth - 2.26 cu. ft. useable drawer volume	1,383.00
Access.	SOL-3D21D	3 Drawer Set - 21" Finished Width - 23" Depth - 3.63 cu. ft. useable drawer volume	1,873.00

Parts for TEC Patio II, Sterling II and Sterling III Grills		
Item	Description	MSRP
SOL-TEC-STBAS	Infrared Bumer, stainless steel with ceramic plate and screen for TEC Patio II, Sterling II and Sterling III.	330.00
SOL-TEC-STBS	Stainless steel screen for infrared burners used in TEC Patio II, Sterling II and Sterling III.	105.00
SOL-TEC-STCG	V-Channel Grilling Grate, SS, for TEC Patio II, Sterling II and Sterling III - 12 3/4" w x 14 3/4" l	272.00

Parts	Please contact Rasmussen for a quote if you need a part not listed here.	
Item	Description	MSRP
Portables		
SOL-8-2	Cooking Grid for Solaire Anywhere Mini model IR8A 6 1/2" w x 9 3/8" d	89.00
SOL-8-3	Infrared Bumer and Screen for Solaire Anywhere Mini model IR8A	146.00
SOL-828R	Bumer Screen only for Anywhere Mini model IR8A. SS 304 Woven Wire Mesh	45.00
SOL-17-2	Cooking Grid for Solaire Anywhere models 17A, 17B, 17M & Everywhere EV-17A; 15 1/4" w x 11 1/4" d	143.00
SOL-17-3	Infrared Bumer and Screen for Solaire Anywhere IR17B and IR17M	206.00
SOL-17-3-17A	Infrared Bumer and Screen for Solaire Anywhere IR17A model	206.00
SOL-EV-3	Infrared Bumer and Screen for Solaire Everywhere EV17A	200.00
SOL-1728R	Bumer Screen only for IR17B/IR17M/EV17A. SS 304 Woven Wire Mesh	68.00
SOL-1729R	Pair of Bumer Screen Clips for IR17B/IR17M.	12.00
SOL-17-4	DISCONTINUED - See SOL-17-4AZ - Regulator/Valve for Solaire Anywhere models IR17B and IR17M, For Serial Numbers 17-005996 and before, (metric threads)	N/A
SOL-17-4AZ	Regulator/Valve/Side Housing/Igniter Module/Electrode for Solaire Anywhere IR17B and IR17M, for Serial Numbers 17-005996 and before, (metric threads) - upgrades entire assembly to current available parts	161.00
SOL-17-4B	Regulator/Valve with Table Top Fittings for Solaire Anywhere models Serial Numbers 17-005997 and greater, and Everywhere EV17A (US threads)	60.00
SOL-17-4C	Regulator/Valve with Table Top Fittings for Solaire Anywhere Mini Model IR8A (US threads) - Red Stem	60.00
SOL-17-4-17A	Regulator/Valve/Bracket for Solaire Anywhere model IR17A (old style grill with folding legs).	76.00
SOL-17-5	SS Regulator/Igniter bracket for Solaire Anywhere models 17B and 17M (ss box on the right side)	60.00
SOL-EV-5	SS Regulator/Igniter bracket for Solaire Everywhere EV17A (ss box on the right side)	52.00
SOL-17-6	Solaire IR17B/IR17M/EV17A side handle w/hardware (each - grills require 2)	30.00
SOL-17-7	Solaire IR17B/IR17M/EV17A hood handle w/hardware	37.00
SOL-17-8	Igniter-Pushbutton for Solaire Portable models 17B, 17M, EV17A (uses AAA battery)	46.00
SOL-17-9	Igniter-Electrode for Solaire Portable models 17B, 17M, EV17A	27.00
SOL-17-10	DISCONTINUED - SEE SOL-17-9 Igniter-Wires	N/A
SOL-17-11	Carrying Bag for Solaire Anywhere and Everywhere Portable Infrared Grills	73.00

Parts		
Please contact Rasmussen for a quote if you need a part not listed here.		
Item	Description	MSRP
SOL-17-12	ID/Waming Plate for Solaire Anywhere	17.00
SOL-EV-102	ID/Waming Plate for Solaire Everywhere	17.00
SOL-LOGODT-ANY	Logo, Solaire Anywhere, Adhesive backed	14.00
SOL-LOGODT-EVERY	Logo, Solaire Everywhere, Adhesive backed	14.00
SOL-17-14-1	Adjustable foot for Solaire Anywhere models IR17B and IR17M with metric threads (silver/gray)	18.00
SOL-1717R	Adjustable foot (black) for IR17B/IR17M for serial #17-005997 and later and EV17A (US threads)	16.00
SOL-17-31	Tripod mounting bracket - attaches to tripod post.	49.00
SOL-1707R	SS Mounting Plate only for SOL-SATRI Solaire Anywhere Tripod.	174.00
SOL-IR17-019S	Tripod base only (no SS mounting plate) for Solaire Anywhere	144.00
SOL-IR17-L605	Valve only used in SOL-SANGC Natural Gas conversion Kit for Solaire Anywhere, 3/8" flare inlet	75.00
SOL-SALPV	Valve and orifice only with 3/8" Flare inlet to use IR17B/M with low pressure propane.	84.00
SOL-1778R	Hood Spacer for Solaire Portable Grills	12.00
SOL-17PB	Phenolic Spacer used in Solaire Anywhere Grills with round rod handles (requires 6 per grill)	3.50

Table Top		
1, 2, and 3 Burner Grills		
SOL-6100R-HV	15" Igniter Wire & Electrode - for AA12A and both burners of AA23A	78.00
SOL-17-8	Igniter-Pushbutton for AA12A 1 Bumer grill (uses AAA battery)	46.00
SOL-23-8	Igniter-Pushbutton for AA23A 2 Bumer grill (uses AAA battery)	65.00
SOL-2859R	Igniter-Pushbutton for AA34A 3 Bumer grill (uses AAA battery)	69.00
SOL-AA21R	IR Bumer & Screen - for AllAbouts	230.00
SOL-AA52R	Bumer Screen, SS, for AllAbouts; 8" w x 9 1/8" d	77.00
SOL-AA13R	Grilling Grate, SS for AllAbouts with back ledge - 10 1/2" w x 13 7/8" d (covers one bumer)	142.00
SOL-AA14R	Grilling Grate, SS for Double Bumer AllAbouts WITHOUT BACK LEDGE (covers two burners)	243.00
SOL-AA15R	Grilling Grate, SS for Single Bumer AllAbout - 10 3/8" w x 13 7/8" d	142.00

Ignition System for All Grills with 9-volt battery		
SOL-6100R-HV	15" Igniter Wire & Electrode - for bumer closest to push button	78.00
SOL-6099R-HV	26" Igniter Wire & Electrode - for second closest bumer to push button	86.00
SOL-6101R-HV	38" Igniter Wire & Electrode - for right hand Rotisserie igniter and 36"/42"/56" left bumer	99.00
SOL-6102R-HV	72" Igniter Wire & Electrode - for left hand Rotisserie igniter	130.00
SOL-6104R	7" Ground Wire with ring tab - AGBQ-27XL, AGBQ30 & IRBQ42	24.00
SOL-6105R	9 Volt Quicklitter 2 Spark Module - for 15G and all two bumer grills	93.00
SOL-6106R	9 Volt Quicklitter 4 Spark Module - for all three bumer grills and grills with rear rotisserie bumer	112.00
SOL-6107R	Push Button Switch for 9 volt ignition system	42.00
SOL-6103R	18" Wire (Push Button) for 9v igniter systems (requires 2)	30.00

Ignition System for Grills with AA battery		
SOL-6100R-HV	15" Igniter Wire & Electrode - for bumer closest to push button	78.00
SOL-6099R-HV	26" Igniter Wire & Electrode - for second closest bumer to push button	86.00
SOL-6101R-HV	38" Igniter Wire & Electrode - 42"/56" left bumer	99.00
SOL-6102R-HV	72" Igniter Wire & Electrode - for left hand Rotisserie igniter	130.00
SOL-6104R	7" Ground Wire with ring tab - AGBQ-27XL, AGBQ30 & IRBQ42	24.00
SOL-6070R	NOT AVAILABLE - AA Battery Holder/Push Button - Use SOL-23-8 (2-spark), SOL-2859R (3-spark) or SOL-25-8 (4-spark).	N/A
SOL-6057R	2 Spark Module (Old style AA battery system) - IRBQ30	83.00
SOL-6058R	NOT AVAILABLE - See SOL-2859 (3 spark) or SOL-25-8 (4 spark) - item was for 4 Spark Module (Old style AA battery system) - IRBQ-27G (Petite), IRBQ42, 56	N/A
SOL-6071R and SOL-6072R	NOT AVAILABLE - Positive and Negative wires that attach to the SOL-6070R. If they need replacing, use SOL-23-8 (2-spark), SOL-2859R (3-spark) or SOL-25-8 (4-spark) in place of module and wires.	N/A
SOL-23-8	2 Spark Module/Button - IRBQ30. (AAA Battery)	65.00
SOL-2859R	3 Spark Module/Button - AGBQ30, IRBQ42. (AAA Battery)	69.00
SOL-25-8	4 Spark Module/Button - AGBQ42 and AGBQ-56. (AAA Battery)	75.00

Ignition System for Grills with AAA battery		
SOL-6100R-HV	15" Igniter Wire & Electrode - for bumer closest to push button	78.00
SOL-6099R-HV	26" Igniter Wire & Electrode - for second closest bumer to push button	86.00
SOL-6102R-HV	72" Igniter Wire & Electrode - for left hand Rotisserie igniter	130.00
SOL-6104R	7" Ground Wire with ring tab - AGBQ-27G	24.00

Parts		Please contact Rasmussen for a quote if you need a part not listed here.
Item	Description	MSRP
Ignition System for IRBQ-27G (Petite)		
SOL-2732R-PET	Electrode, wire & bracket - IRBQ27G (Petite)	90.00
SOL-6104R	7" Ground Wire with ring tab - AGBQ-27XL, AGBQ30 & IRBQ42	24.00
SOL-6070R	NOT AVAILABLE - AA Battery Holder/Push Button - Use SOL-2859R (3-spark)	N/A
SOL-6058R	NOT AVAILABLE - See SOL-2859 (3 spark) - item was 4 Spark Module (Old style AA battery system) - IRBQ-27G (Petite)	N/A
SOL-6071R and SOL-6072R	NOT AVAILABLE - Positive and Negative wires that attach to the SOL-6070R are no longer available. If they need replacing, use SOL-2859R in place of 6058R, 6104R and 6070R.	N/A
SOL-2859R	3 Spark Module/Button - 27G, 27GXL & IRBQ27G (Petite), and replacement for all AA modules (use 6104R for 2 burner models)	69.00

Burners, Screens, Grates:

15G		1 Burner Grill
SOL-2721R	IR Burner & Screen - 15G and AGBQ-27G	231.00
SOL-2752R	Burner Screen, SS, for 15G and AGBQ-27G; 8" w x 9 1/8" d	75.00
SOL-2713R	Grilling Grate, SS - 15G, AGBQ-27G & IRBQ-27G (Petite); 11 3/8" w x 13 7/8" d	208.00

21G		2 Burner Grill
SOL-2121R	IR Burner & Screen - 21G	201.00
SOL-2036R	Burner Screen, SS, 21G; 5 5/8" w x 9 3/4" d	68.00
SOL-2116R	Grilling Grate, SS - 21G; 8 5/8" w x 13 3/4" d	160.00
SOL-2109R	Convection U-Burner, SS - 21G	147.00
SOL-2145R	Vaporizer / Flavor Tray, SS - 21G	75.00

21GXL		2 Burner Grill
SOL-2221R	IR Burner & Screen - 21GXL	214.00
SOL-2136R	Burner Screen, SS - 21GXL; 5 5/8" w x 11 3/4" d	70.00
SOL-2016R	Grilling Grate, SS - 21GXL; 8 5/8" w x 16 3/4" d	195.00
SOL-2209R	Convection U-Burner, SS - 21GXL	160.00
SOL-2045R	Vaporizer / Flavor Tray, SS - 21GXL	80.00

IRBQ-27 (Petite)		3 Burner Grill
SOL-2721R-PET	IR Burner & Screen - IRBQ27G (Petite)	260.00
SOL-2722R	Burner Screen, SS - IRBQ-27G (Petite)	75.00
SOL-2713R	Grilling Grate, SS - 15G, AGBQ-27G & IRBQ-27G (Petite); 11 3/8" w x 13 7/8" d	208.00

AGBQ-27G		2 Burner Grill
SOL-2721R	IR Burner & Screen - 15G and AGBQ-27G	231.00
SOL-2752R	Burner Screen, SS - 15G and AGBQ-27G; 8" w x 9 1/8" d	75.00
SOL-2713R	Grilling Grate, SS - 15G, AGBQ-27G & IRBQ-27G (Petite); 11 3/8" w x 13 7/8" d	208.00
SOL-6209R	Convection U-Burner, SS - AGBQ-27G	174.00
SOL-2786R	Vaporizer/ Flavor Tray, SS - AGBQ-27G	89.00

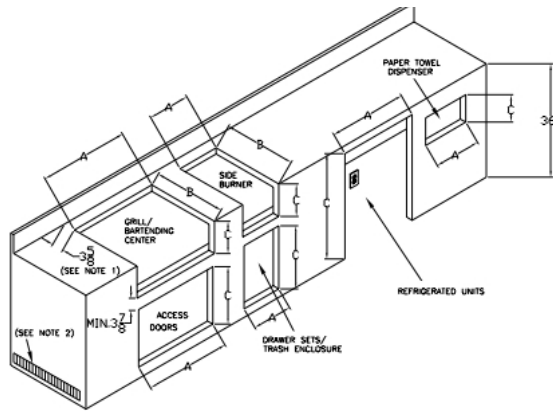
27XL		IRBQ-27GXL - 2 burners; AGBQ-27GXL - 2 burners + rear rotisserie
SOL-2821R	IR Burner & Screen - 27GXL	252.00
SOL-2822R	Burner Screen, SS - 27GXL; 8 1/4" w x 11 7/8" d	99.00
SOL-2813R	Grilling Grate, SS - 27GXL; 11 3/8" w x 16 3/4" d	231.00
SOL-6210R	Convection U-Burner, SS - 27GXL	185.00
SOL-2886R	Vaporizer/ Flavor Tray, SS - 27GXL	93.00

30" and larger		
SOL-6021R	IR Burner & Screen - for 30, 36, 42, 56 and 56T grills	290.00
SOL-6069R	Burner Screen, SS - 30, 36, 42, 56 and 56T; 8 1/4" w x 14 1/2" d	120.00
SOL-6404R	IR Burner & Screen for IRBQ36 and AGBQ36 Narrow IR Burner	231.00
SOL-6403R	Burner Screen, SS - for 36" Sear burner; 5 3/4" w x 14" d	88.00
SOL-6004R	Grilling Grate, SS 12 3/4" w x 19" d (larger) - for AGBQ-30, 36, 42, 56, 56T; IRBQ-30, 42	260.00
SOL-6013R	Grilling Grate, SS 11 3/4" w x 19" d (smaller) - for AGBQ-42, 56; IRBQ-42, 56	239.00
SOL-6010R	Grilling Grate, SS 5 7/8" w x 19" d (smallest) - for AGBQ-36 and IRBQ-36	146.00
SOL-6095R	Convection U-Burner, SS - 30, 36, 42, 56 & 56T	218.00
SOL-4486R	Vaporizer/Flavor Tray, SS - 30, 36, 42, 56 & 56T	100.00
SOL-4486R-C	Vaporizer/Flavor Tray, SS - with installed "hangers" to convert "old style" grills - 30, 42 & 56"	114.00

Parts	Please contact Rasmussen for a quote if you need a part not listed here.	
Item	Description	MSRP
All Grills	Common to all 15" and larger grills (except where noted)	
SOL-6008R	Hood Handle Bracket & Insulator - 15G, 21G, 21GXL, 27G & 27GXL	39.00
SOL-6001R	Hood Handle Bracket & Insulator - 30, 36, 42, 56, 56T	47.00
SOL-6005A	Spit Rod Handle - Rotisserie - 27, 30, 36, 42, 56, 56T	24.00
SOL-6005B	Bushing - Rotisserie - 27, 30, 36, 42, 56, 56T	21.00
SOL-6005C	Forks (pair) - Rotisserie - 27, 30, 36, 42, 56, 56T	41.00
SOL-6005D	Counter Balance Weight - Rotisserie - 27, 30, 36, 42, 56, 56T	27.00
SOL-6006R	Motor for Rotisserie - All sizes of grill, and 6005, 6009, 6011 and 6020 kits	284.00
SOL-6007R	Not Available - Use SOL-6006R - Motor for Rotisserie - 27G & 27GXL	N/A
SOL-6015R	Knob, Bumer Control - Metal	28.00
SOL-6016R	Regulator, convertible - for all grills (except Portables)	54.00
SOL-G2R150A	LP Two Stage Regulator & 36" hose - for 36, 42, 56, 56T	119.00
SOL-6067R	36" LP Hose & Reg - for 30" and smaller	84.00
SOL-6012R	Rotisserie Motor Mounting Bracket - all grills	44.00
SOL-6005E	Rotisserie Spit Rod - 27 & 30"	68.00
SOL-6019E	Rotisserie Spit Rod - 36"	84.00
SOL-6020E	Rotisserie Spit Rod - 42 & 56"	99.00
SOL-6027RLP	Main Bumer Valve with LP 1.45 Orifice	54.00
SOL-6028R	Side Bumer Valve - for SB with Black Cap	54.00
SOL-6045R	Gas Valve with Thermostatic Flame Failure Device for Rear Infrared Rotisserie Bumer	74.00
SOL-6047R	Thermocouple for Rotisserie Burners - 27GXL, 30, 36, 42, 56, 56T	24.00
SOL-6047R-NUT	Nut F0139(M8) for Thermocouple	14.00
SOL-6048R	Bezel	20.00
SOL-6052R	Manifold - Side Bumer (IRSB14)	101.00
SOL-6077R	Solaire Logo for front control panel, Die cast	24.00
SOL-LOGODT-LARGE	Solaire Logo for front control panel, 27, 27XL, 30, 36, 42, 56, 56T, revised 2010, Adhesive-backed	18.00
SOL-LOGODT-SB	Solaire Logo for side bumer, 21G and 21GXL, revised 2010, Adhesive-backed	14.00
SOL-6078R	SS Hood Spacer (1)	14.00
SOL-6130R	Side Bumer Bumer Assembly with Black Porcelain Ring and Cap (each - requires two for IRSB-14)	162.00
SOL-6137R	Natural Gas Side Bumer Main Bumer Orifice	16.00
SOL-6138R	Natural Gas Side Bumer Simmer Bumer Orifice	16.00
SOL-6201R	Orifice Main Bumer NG for 30/36/42/56/56T, 2.45 Dia.	16.00
SOL-6203R	Orifice Main Bumer LP (#54) for 30/36/42/56, 1.45 Dia.	16.00
SOL-6205R	Orifice Main Bumer LP for 27GXL, 1.22mm Dia.	16.00
SOL-6206R	Orifice Main Bumer NG for 27GXL, 1.95mm Dia.	16.00
SOL-6207R	Orifice Main Bumer LP for 27G, AA12A and AA23A, 1.05mm Dia.	16.00
SOL-6208R	Orifice Main Bumer NG for 27G, AA12A and AA23A, 1.70mm Dia.	16.00
SOL-6035R	24-0745-(50) Orifice Drilled #50 - NG, Rear Rotiss - 27XL, 30, 56T	16.00
SOL-6036R	24-0745-(56) Orifice Drilled #56 - LP, Rear Rotiss - 42, 56	16.00
SOL-6037R	24-0745-(57) Orifice Drilled #57, LP, Rear Rotiss - 27XL, 30	16.00
SOL-6038R	24-074S-48 Orifice Drilled #48, NG, Rear Rotiss - 42, 56	16.00
SOL-LP-NG-27PET	LP to NG Conversion Kit (3 #54 orifices) for 27" Petite Solaire (IRBQ-27G)	32.00
SOL-LP-NG-42	LP to NG Conversion Kit (3 orifices) for 42" & 56" IRBQ	32.00
SOL-NG-LP-27PET	NG to LP Conv. Kit (3 - #65 orifices, fitting, regulator/hose) for IRBQ-27G Petite Solaire	166.00
SOL-NG-LP-42	NG to LP Conv. Kit (orifices,fitting,reg/hose) 42" IRBQ	166.00
SOL-SD-1	Solaire Screwdriver, .10" blade	15.00

Carts & Island Access	Carts, Doors and Drawers	
SOL-6029R	Door Handle	21.00
SOL-6073R	Caster, swivel without brake - for all cart and pedestal models	41.00
SOL-6074R	Caster, swivel with brake - for all cart and pedestal models	46.00
SOL-6075R	Door Magnet #302A	14.00
SOL-SLIDE12	Full Extension Slide, SS, 12" travel length, 88 lb. load rating	87.00
SOL-SLIDE16	Full Extension Slide, SS, 16" travel length, 79 lb. load rating	98.00
SOL-SLIDE20	Full Extension slide, SS, 20" travel length, 73 lb. load rating	110.00
SOL-SBSM1	Bracket to adapt new style IRSB-14SM to old style carts, SS	90.00
SOL-SBSM2	Bracket to adapt old style IRSB-14SM to new style carts, SS	90.00

Built-In Cut Out Dimensions



Model #	Product	Width	Depth	Height
		A	B	C
IRBQ-15	15" Accent Grill	14 1/2"	16 3/4"	9 5/8"
IRBQ-21	21" Grill	20"	16 1/4"	7 7/8"
IRBQ-21XL	21XL Grill	20"	21"	7 7/8"
AGBQ-27	27" Grill	26"	16 1/4"	8 7/8"
AG/IRBQ-27XL	27XL Grill	26"	21"	8 7/8"
AG/IRBQ-30	30" Grill	28 1/2"	23"	10 1/4"
AG/IRBQ-36	36" Grill	34 1/2"	23"	10 1/4"
AG/IRBQ-42	42" Grill	40 1/2"	23"	10 1/4"
AGBQ-56 & 56T	56" Grill	54 1/2"	23"	10 1/4"
IRIJ-15	15" Accent Grill	20"	18 1/4"	10 3/4"
IRIJ-21	21" Insulated Jacket	25 3/8"	17 11/16"	9"
IRIJ-21XL	21XL Insulated Jacket	25 3/8"	22 9/16"	9"
IRIJ-27	27" Insulated Jacket	31 3/8"	17 11/16"	10"
IRIJ-27XL	27XL Insulated Jacket	31 3/8"	22 9/16"	10"
IRIJ-30	30" Insulated Jacket	34 1/2"	24 1/2"	11 1/4"
IRIJ-36	36" Insulated Jacket	40 1/2"	24 1/2"	11 1/4"
IRIJ-42	42" Insulated Jacket	46 1/2"	24 1/2"	11 1/4"
IRIJ-56	56" Insulated Jacket	60 1/2"	24 1/2"	11 1/4"
IRDT-24	Bartending Center	23 1/4"	23"	10 1/4"
IRDT-30	Bartending Center	28 1/2"	23"	10 1/4"
SSB-14	Single Side Burner	13 1/4"	13 1/4"	9"
IRSB-14	Dual Side Burner	13 1/4"	23"	10 1/4"
SPR7-OS	Refrigerator	24 1/2"	26"	34"
SP6DS-2D-OS	2 Drawer Refrigerator	24 1/2"	26"	34"
SP6DS-3D-OS	3 Drawer Refrigerator	24 1/2"	26"	34"
SBC-490-OS	Refrigerated Beer Cooler	24 1/2"	26"	35"
FMD/IRAD-21	21" Door	18 1/4"	-	18 1/4"
FMD/IRAD-30	30" Doors	27 1/4"	-	18 1/4"
FMD/IRAD-36	36" Doors	33 1/4"	-	18 1/4"
FMD/IRAD-42	42" Doors	39 1/4"	-	18 1/4"
UD26S	Single Drawer - Shallow	26 1/4"	15"	3 11/16"
UD26D	Single Drawer - Deep	26 1/4"	23"	3 11/16"
2D14S	2 Drawer Narrow - Shallow	12 7/8"	15"	20 1/16"
2D14D	2 Drawer Narrow - Deep	12 7/8"	23"	20 1/16"
2D21S	2 Drawer Wide - Shallow	19 7/8"	15"	20 1/16"
2D21D	2 Drawer Wide - Deep	19 7/8"	23"	20 1/16"
3D14S	3 Drawer Narrow - Shallow	12 7/8"	15"	20 1/16"
3D14D	3 Drawer Narrow - Deep	12 7/8"	23"	20 1/16"
3D21S	3 Drawer Wide - Shallow	19 7/8"	15"	20 1/16"
3D21D	3 Drawer Wide - Deep	19 7/8"	23"	20 1/16"
PTH1	Paper Towel Holder	14 7/8"	8"	8 3/4"
TRE1	Trash Enclosure	12 7/8"	19"	20 1/16"

Note 1: Minimum 3 5/8" clearance is required between edge of cutout and inside back wall of enclosure for the grill's gas regulator.

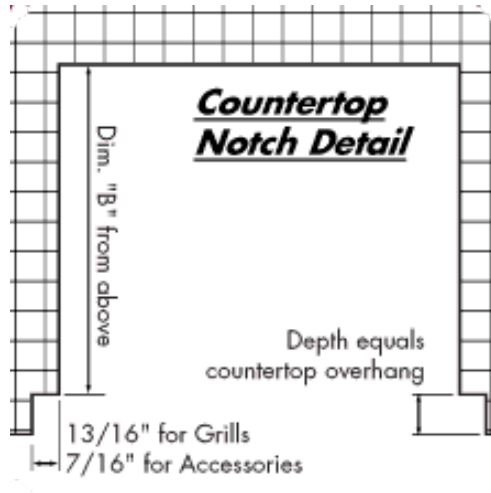
Note 2: Ventilation of island is required and should be in accordance with local codes or accepted practice.

SPECIAL NOTE: Grill installation into a combustible enclosure requires an Insulated Jacket. Order part #SOL-IRIJ-XX, where "XX" is the size of the grill in inches.

NATURAL GAS SUPPLY NOTE: A standard 3/8" I.D. flexible natural gas supply hose has a maximum capacity of 60,000 BTU/hour and should only be used with 30" and smaller grills. A 1/2" I.D. natural gas supply hose is required for larger models, or for 30" grills with a side burner. The proper hose is available from Solaire: order part #SOL-12HOSE12.

Detail for Flush Mounting

If the countertop of your island overhangs the cabinet face, the countertop must be notched to accommodate the control panel or front of the Solaire equipment.



Rasmussen Resources:

Email (general): info@rasmussen.biz

Placing Orders: orders@rasmussen.biz or fax: 562-698-3510

Websites: www.rasmussen.biz (main website)

www.rasmussengaslogs.com www.solairegrills.com www.radiantpatioheater.com

Knowledge Base: www.RasBox.com

Photo and Video Repository: www.rasmussen.smugmug.com

Log Videos: www.YouTube.com/rasmussengaslogs

Alterna Videos: www.YouTube.com/alternafire

Solaire Videos: www.YouTube.com/solairegrills

Blog and Newsletter Archive: www.gaslogsandgrills.com

There are three types of grills on the market:

- 1) HOT/FAST; 2) LOW/SLOW; and 3) EVERYTHING ELSE

The **HOT/FAST** grill is Solaire Infrared, which heats up to 1000 degrees in just three minutes – even in the dead of winter. The high heat locks in the juices and flavor, and grills food faster, making Solaire the everyday grill that is perfect for today’s busy lifestyles.

LOW/SLOW are the low-temperature, slow-cooking smoker, egg or pellet barbecue, which are fine for the weekend - when you have the hours needed for their slower cooking process.

“**EVERYTHING ELSE**” are the common type of gas grill found in the big Box Stores, as well as those made by kitchen range and other grill companies. The main difference amongst these grills is the cost of their “wrapper”, the quality of the materials and workmanship that surround the burners. The main similarities are the basic technology of burners that heat the air around the food, which never get hot enough, dry out the food, and leave you with that “gas barbecue taste”. They are neither good at LOW/SLOW, nor are they able to achieve HOT/FAST performance.

For the best of both worlds, you don’t want a single grill that does neither, but a LOW/SLOW for the weekend, and a HOT/FAST for your busy week. And the HOT/FAST Solaire Infrared Grill provides better-than-restaurant-quality outcomes to almost all types of foods, while the searing hot temperature creates excellent bar marks and a crusty exterior to your LOW/SLOW and Sous Vide techniques - just a couple of minutes on HIGH to step up your LOW/SLOW game.