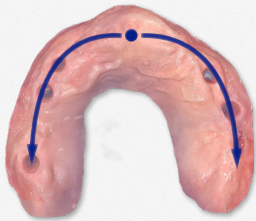


# Edentulous case Scanning Workflow

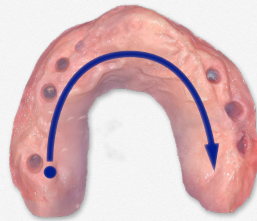
Before scanning, please clean remove the healing caps and keep two jaws clean and dry.

## Upper Jaw



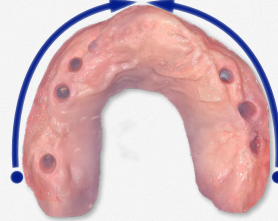
### Step 1 Scan the alveolar ridge

- Start from the ridge at the midline
- Turn off the AI function (shortcut key A)
- Ensure the cuffs are not deformation



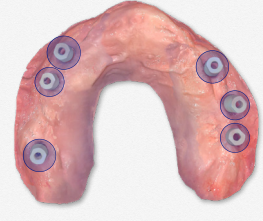
### Step 2 Scan the palate side

- Rotate the scanner to the palate side
- Scan the palate as completely as possible



### Step 3 Scan the bilateral buccal & vestibule

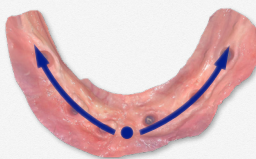
- Scan both sides separately
- Stabilize movable tissue
- Check scan and capture missing anatomy



### Step 4 Scan the scanbodies

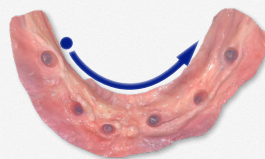
- Make all scanbodies are in position
- Choose scanbodies made of suitable materials
- When using "Cut" make sure the cut-out area covers the cuff area completely
- Scan the scanbodies as completely as possible

## Lower Jaw



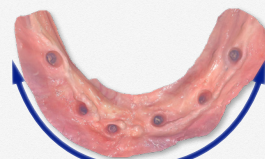
### Step 1 Scan the alveolar ridge

- Start from the ridge at the midline
- Turn off the AI function (shortcut key A)
- Ensure the cuffs are not deformation



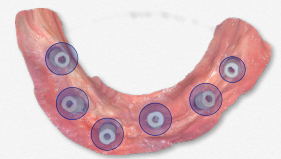
### Step 2 Scan the lingual side

- Rotate the scanner to the lingual side
- Scan the palate as completely as possible



### Step 3 Scan the bilateral buccal & vestibule

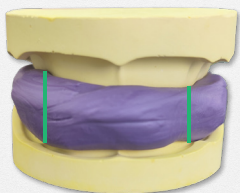
- Scan both sides separately
- Stabilize movable tissue
- Check scan and capture missing anatomy



### Step 4 Scan the scanbodies

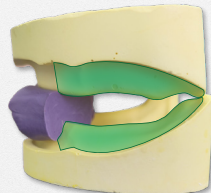
- Make all scanbodies are in position
- Choose scanbodies made of suitable materials
- When using "Cut" make sure the cut-out area covers the cuff area completely
- Scan the scanbodies as completely as possible

## Bite



### Step 1 Ensure the vertical dimension

- Make a bite wax to support two jaws
- After the bite wax has solidified, cut it as shown in the picture



### Step 2 Scan bilateral bite

- Ensure jaws stable when scanning
- Scan the bite until the scanner registers the bite and the 3D model comes together