

QUICK START GUIDE

Graphics shown below are for illustrative purposes only.

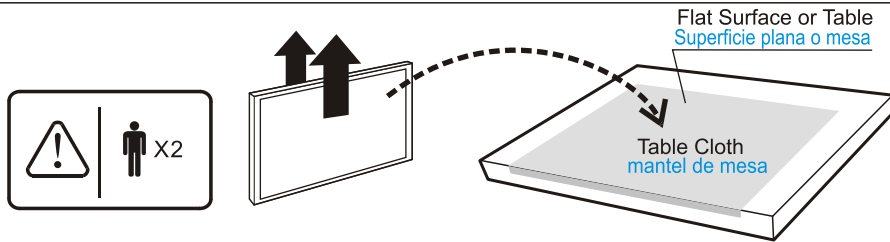
TCL

The Creative Life

Need assistance?
visit our website at www.tclusa.com
or call 1-877-300-8837

Installing the table stand Instalación de la base de mesa

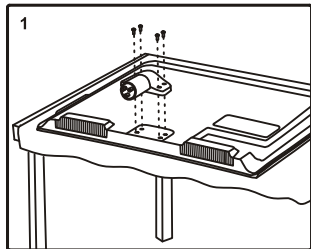
If you do not want to mount the TV to the wall, install the table stand to the TV as follows:
Si no desea montar el televisor en la pared, instale la base de mesa en el televisor de la manera siguiente:



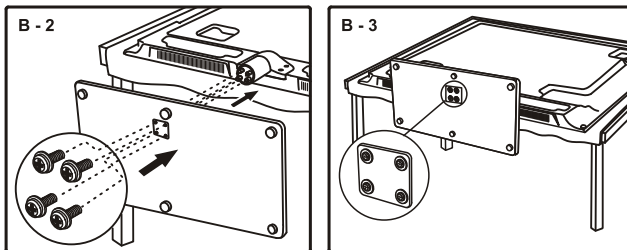
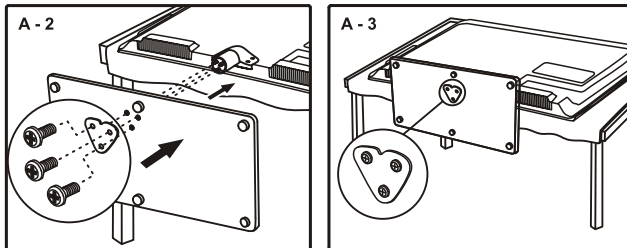
CAUTION! Please ensure that the surface is flat and is able to support the weight of the TV.
¡PRECAUCIÓN! Asegúrese de que la superficie sea plana y de que pueda soportar el peso del TV.

A is applied to models of 32" or under 32".
A se aplica en los modelos de 32" o menores de 32".

For some models, the step 1 is not needed.



En algunos modelos, no es necesario el paso 1.



B is applied to models of 39" or Larger.
B se aplica en los modelos de 39" o más grandes.

REMINDER:

Please keep the original carton box and packaging in order to protect the TV if moved or stored.

RECORDATORIO:

Conserve la caja de cartón y el material de embalaje originales para proteger el televisor al moverlo o almacenarlo.

Connection & Setup Conexión y configuración

1 Antenna/cable connection
Conexión de la antena y el cable

Outdoor or Indoor Antenna
Antena exterior o interior

ANT/CABLE /SAT IN

or

Cable Box, Satellite Receiver, or Wall Outlet

or

RF Coaxial Wire (75 ohm)

HDMI connection as an alternative to cable input
La conexión HDMI es una alternativa a la entrada de cable

2 Power connection
Conexión de la alimentación

3 Turn on the TV
Encienda el TV

or

4 Initial Setup
Configuración inicial

Initial Setup Language

Please select your language: English
Français
Español

Initial Setup TV Location

TV Location Home
Retail

Initial Setup Time Zone

Please select your time zone: Hawaii
Alaska
Pacific Mountain
Central
Eastern
Atlantic
Newfoundland

Back Select OK Next CLEAR Exit

Initial Setup Tuner

Please select your tuner mode: Antenna
Cable/Sat

Initial Setup Channel Scan

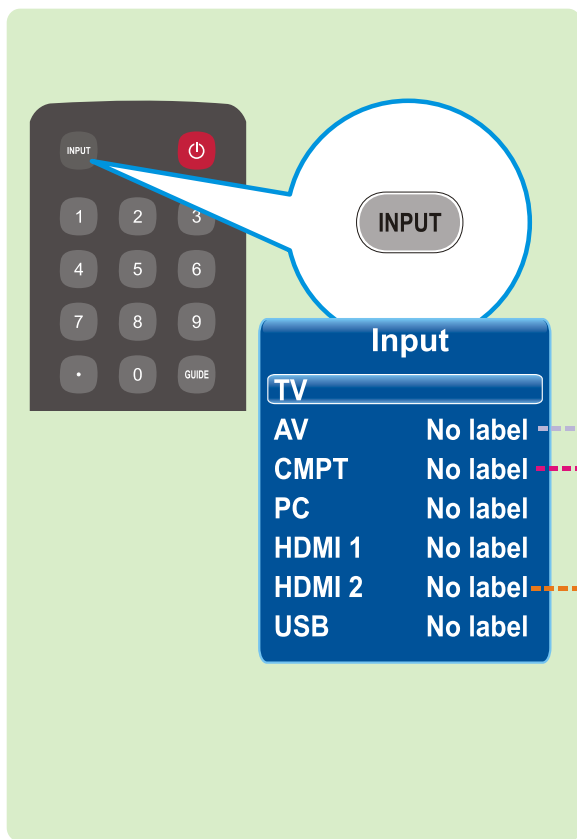
First, please connect Cable/Sat or Antenna. Start Channel Scan now? If you skip this step, the Channel Scan could be performed in Setup menu later.

Scan Skip Scan

0%

Back Select OK Next CLEAR Exit

External Component Connection Conexión de componentes externos



INPUT

Input

TV	No label
AV	No label
CMPT	No label
PC	No label
HDMI 1	No label
HDMI 2	No label
USB	No label

