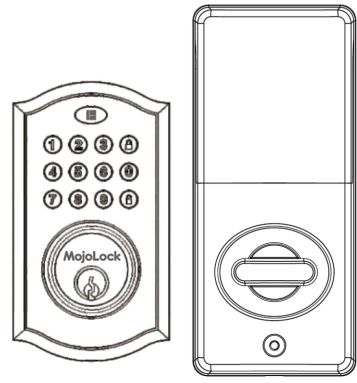


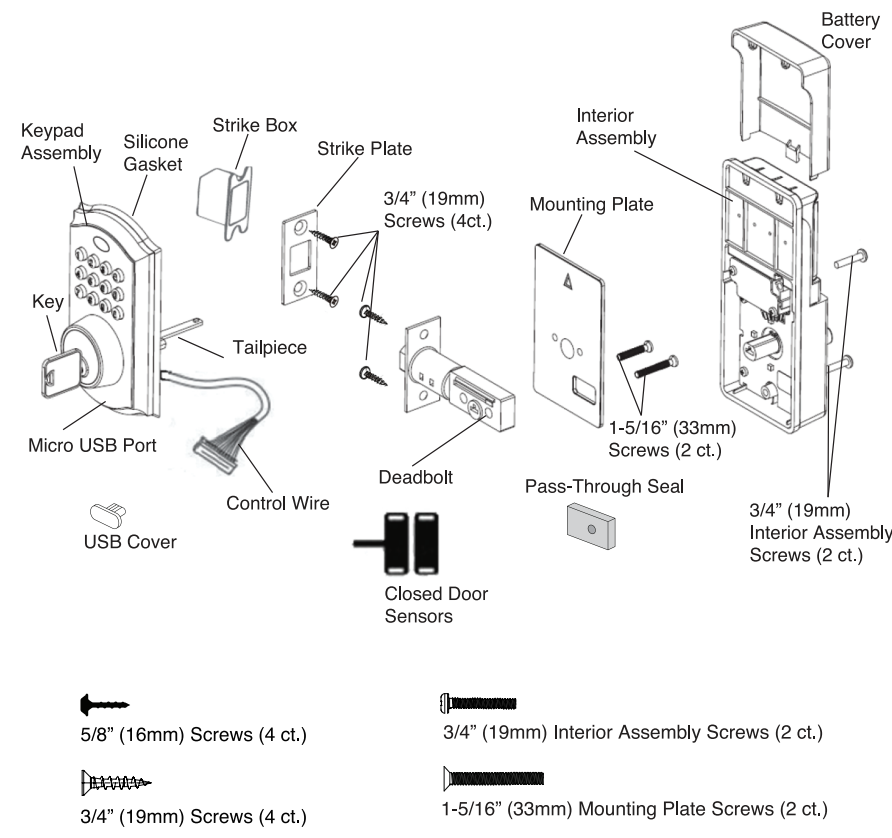
MojoLock G4

Installation Guide



01

Components List



Tools required for installation on pre-drilled doors:

- Phillips Screwdriver (DO NOT USE A POWER DRILL)

02

Door Preparation for Undrilled Doors

If you are installing your new MojoLock on a door that does not have holes for a deadbolt, please refer to the Prepare Door and Jamb section located on pages 22-24.

This section includes a template for the placement of the holes and detailed instructions for the drilling of your door.

Tools required for installation on doors that require drilling:

- Drill
- Tape Measure
- Pencil
- 2-1/8" (54mm) Drill Hole Saw
- Chisel
- Hammer
- 1" (25mm) Drill
- 1/16" (2mm) Drill
- Phillips Screwdriver

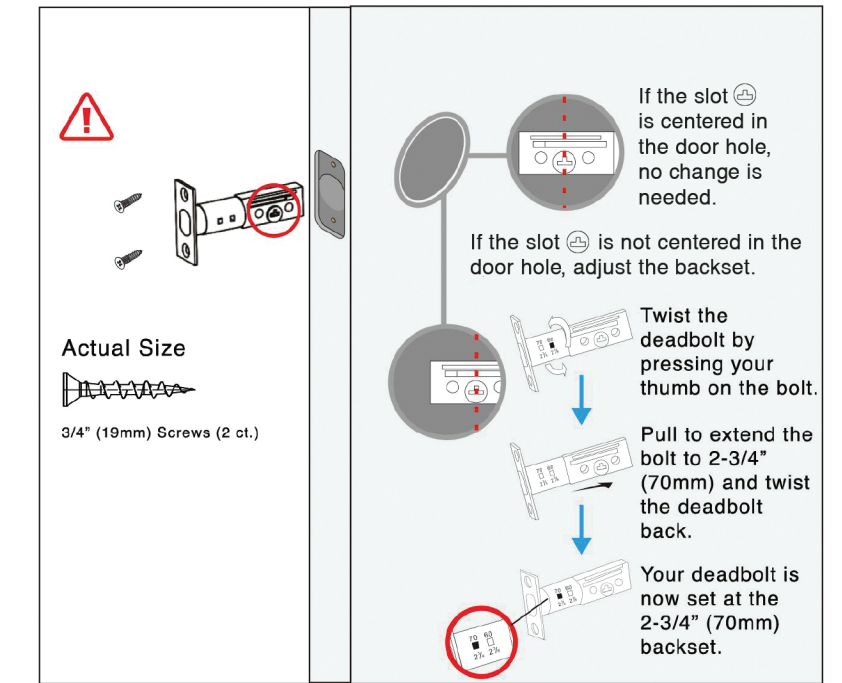
03

Installation Guide STEP 1

Install the Deadbolt

Twist the latch and adjust the deadbolt length.

Make sure the slot in the deadbolt is centered in the door hole. If the slot is not centered in the hole, adjust the backset.



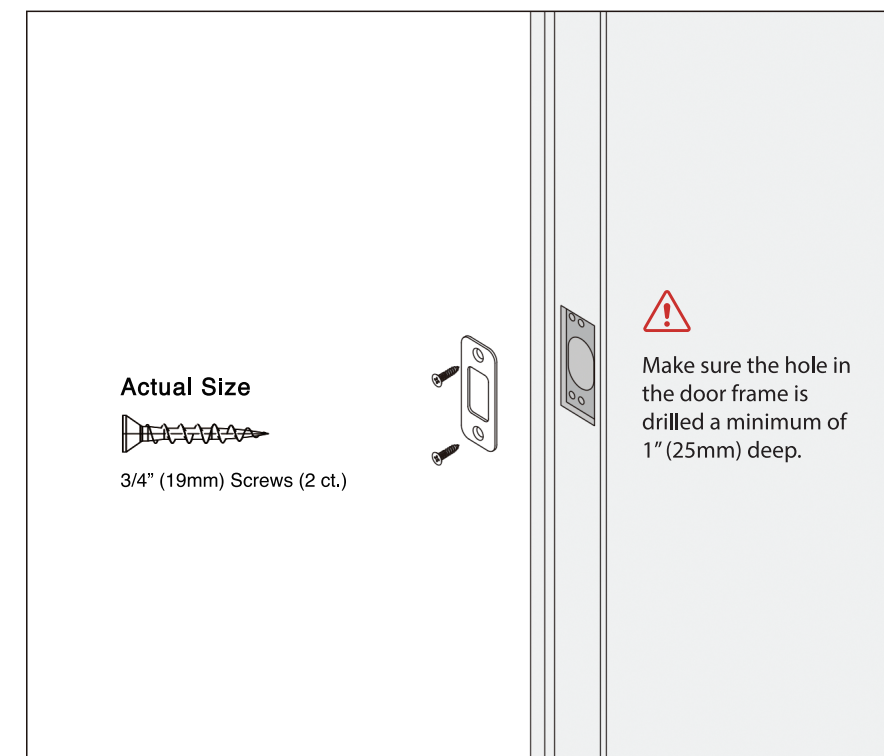
04

Installation Guide STEP 2

Install the Strike Plate

Optional: Insert the strike box into the door frame before installing the strike plate.

Install the strike plate into the door frame.

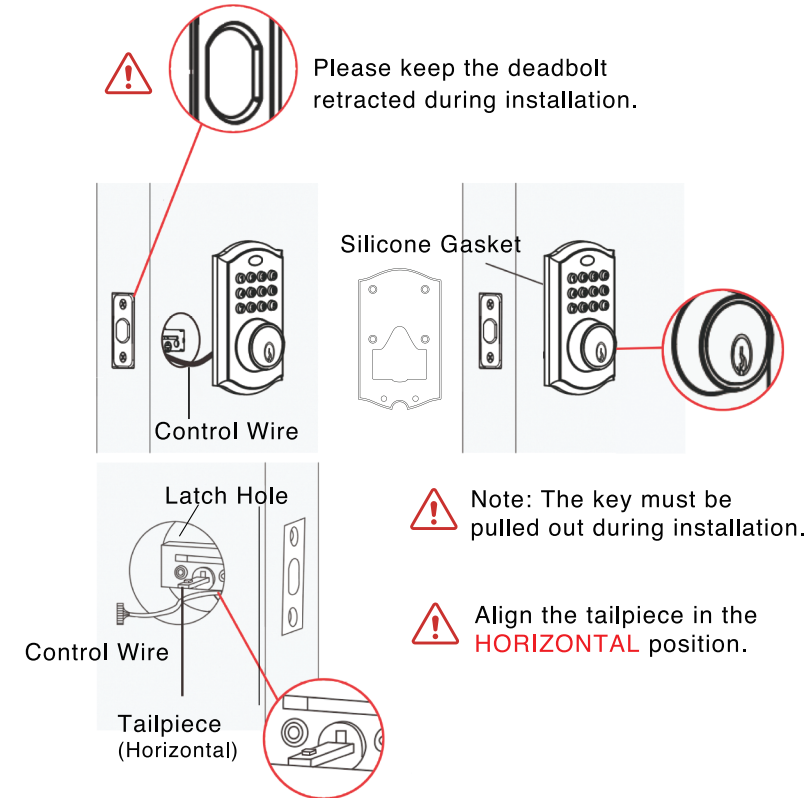


05

Installation Guide STEP 3

Install the Keypad Assembly

Route the control wire through the door BELOW the deadbolt. Place the silicone gasket between the keypad and the door. Align the tailpiece as shown and push the keypad assembly onto the door.

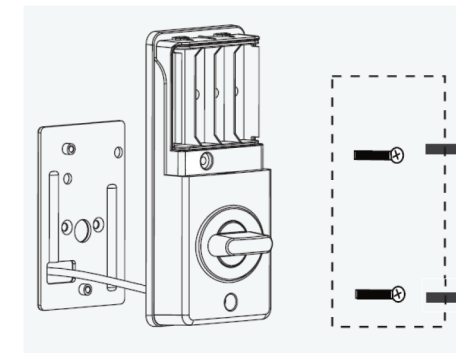


06

Installation Guide STEP 4

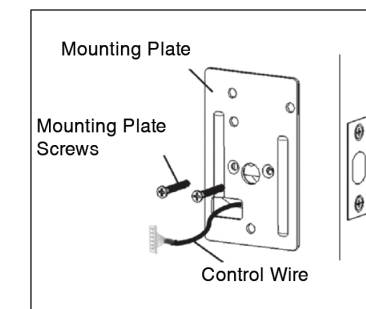
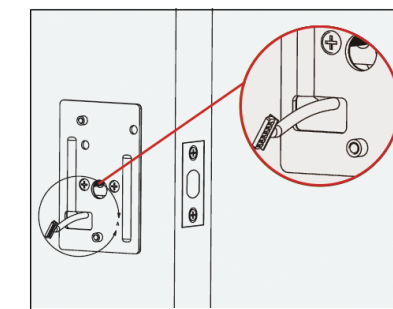
Install the Interior Mounting Plate

Loosen the two screws that attach the mounting plate to the interior assembly then remove the mounting plate.



Route the control wire through the cutout in the mounting plate.

Tighten screws to secure mounting plate to keypad.

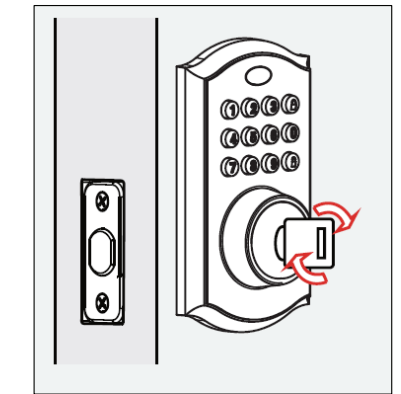


07

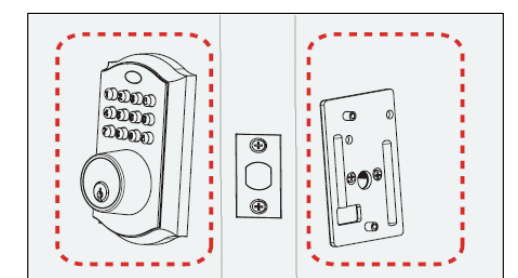
Installation Guide STEP 5

Test Deadbolt

After tightening the mounting plate screws, insert the key, and lock/unlock the deadbolt to ensure that the deadbolt extends and retracts smoothly.



If the deadbolt does not extend and retract smoothly, loosen the mounting plate screws, and adjust the plate and keypad alignment. Retest the deadbolt after fixing alignment.

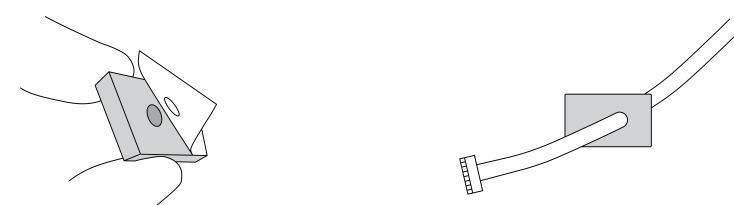


08

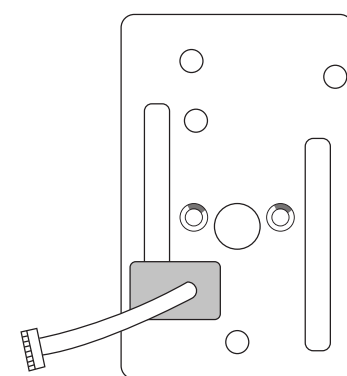
Installation Guide STEP 6

Add Wire Pass-Through Seal to Mounting Plate

1. Remove the adhesive liner from the back of the wire pass-through seal.
2. Push the connector and cable through the pass-through seal.



3. Stick the pass-through seal to the mounting plate.

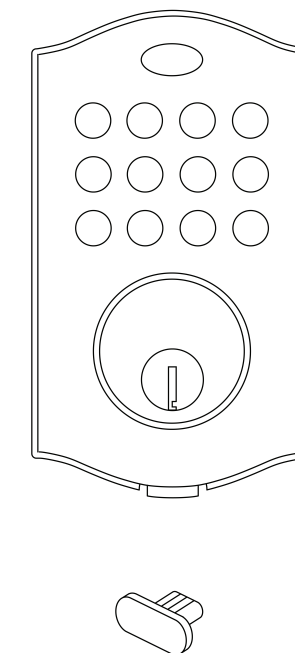


10

Installation Guide STEP 7

Add USB Cover

Use the USB cover to seal the USB port for protection against humidity.



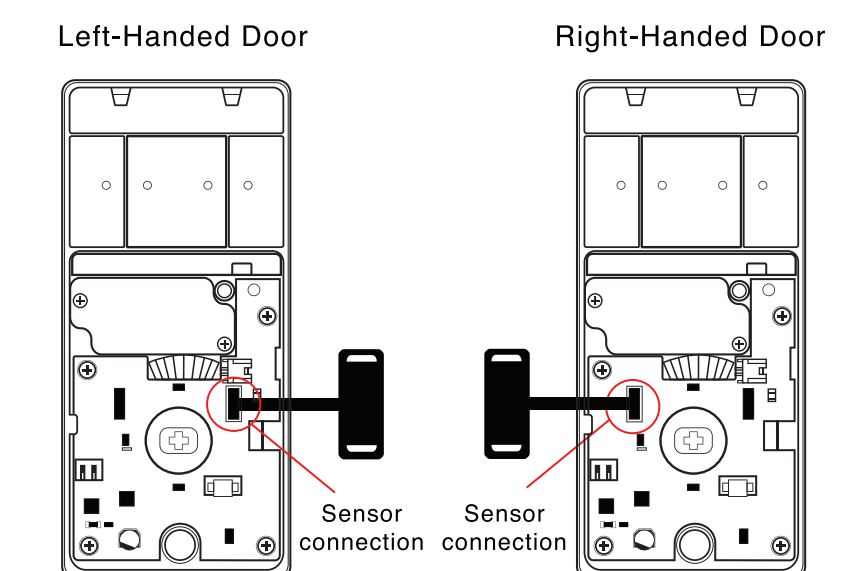
11

Installation Guide STEP 8

Connect the Door Sensor (Optional)

The Closed Door Sensor will detect when the door has been closed and will automatically lock. If the door is unlocked and not opened, the deadbolt will automatically lock after 30 seconds. These features are useful in ensuring the property is secure in case the person leaving forgets to lock the deadbolt.

Insert the ribbon cable gently into the slot until it is seated.



12

BACK OF TEMPLATE

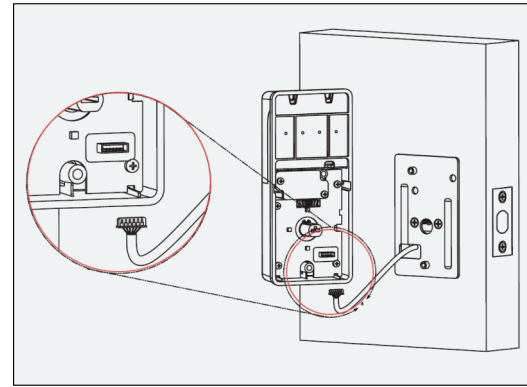
09

Install the Interior Assembly

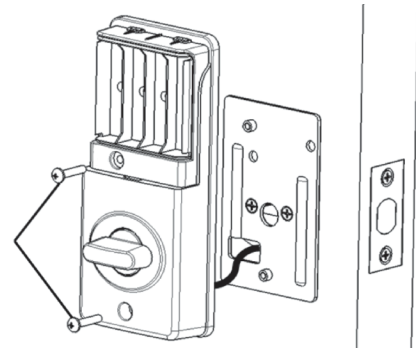
Connect the control wire from the keypad to the interior assembly. The connector only fits one way (smooth side should be on the bottom).



Make sure the control wire connector is pushed in all the way, otherwise the keypad will not work.



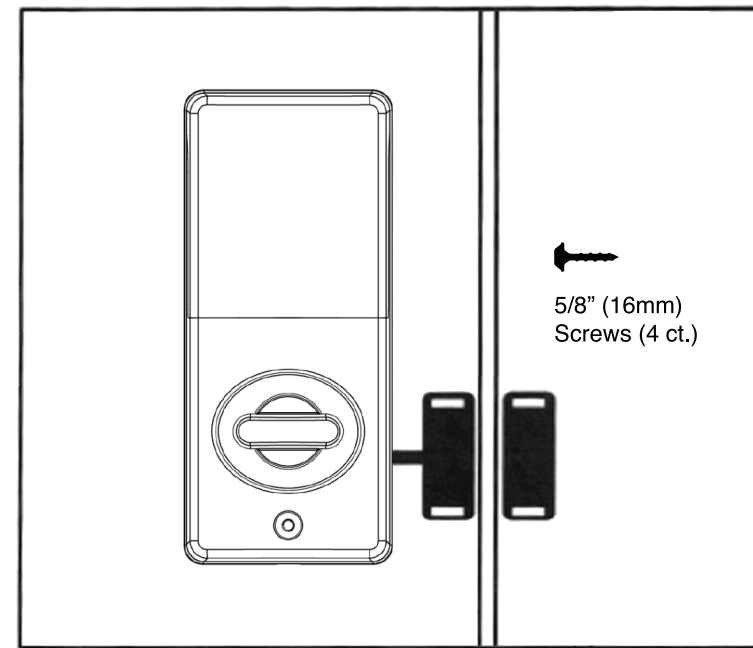
Insert and tighten the two screws to secure the interior assembly to the mounting plate.



13

Install the Door Sensors (Optional)

Position both sensors so that when the door is closed, the sensors are no further than 1.5cm apart. Remove the adhesive backing from each sensor and affix to the door and door frame. Install two screws per sensor.

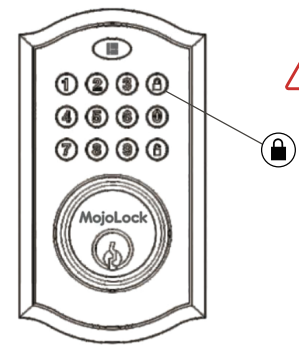
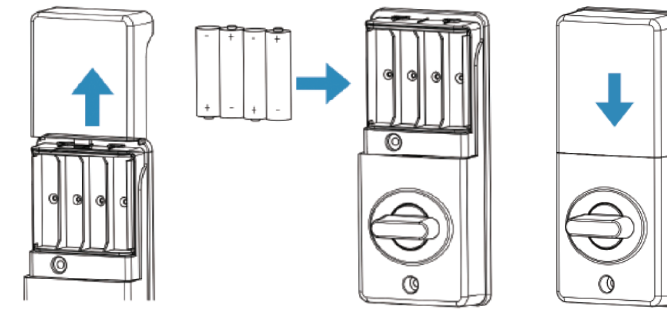


14

Install the Batteries

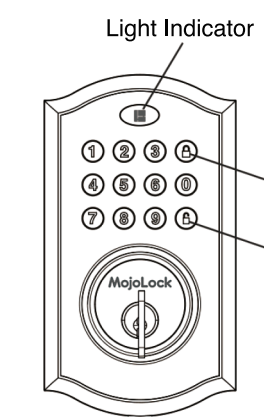
Install the batteries and cover.

Note: Do not use rechargeable batteries. Do not mix different types of batteries and do not mix old with new batteries. Be sure that batteries are installed in the correct orientation.



After installing the batteries, keep the door open, and press the lock button to initiate auto-calibration for left- or right-handed doors.

15



- Green**
 - Indicates unlocking is successful.
 - Indicates locking is successful.
- Red**
 - Indicates error message during operation. See Audio and Visual Messaging Guide (page 19).
- Lock Button**
 - Used to lock the door.
- Unlock Button**
 - Used to unlock the door.

Batteries (not Included)

MojoLock requires four high-quality AA alkaline batteries, or 1.5V lithium batteries for longer life. When all four batteries are installed in the correct position, you will hear three beeps, and the keypad will illuminate white. DO NOT TOUCH the keypad until the keypad stops illuminating.

To Unlock

Using the keypad, enter a valid User Code (for example: 1-2-3-4-5-6) and press . The device will respond with two short beeps and LED flashes green two times.

To Lock

Using the keypad, press . The device will respond with two short beeps and LED flashes green two times.

16

Mobile Apps

Once you have completed installation of your MojoLock, please download your free mobile app from the Apple App Store or Google Play Store.

1. Download the mobile app:

- ShowMojo app: If you are a ShowMojo customer.
- MojoAccess app: For everyone else, MojoBoxes can be used for free and with no monthly fee only from the MojoAccess app.

2. In the mobile app:

- If you're using the ShowMojo app, login with your existing credentials.
- If you're using the MojoAccess app, create a free account or sign in if you already have an account.

3. Follow the **Add Lock** steps in the app.

4. Create access codes, set permanent codes, and more directly from the app.

17

Installation Troubleshooting

| Issue | Solution |
|--|---|
| The lock has no electrical function. Keypad does not light up. | <ul style="list-style-type: none"> Check all batteries to ensure they are new. Check to ensure the batteries are installed correctly (+ / -). Check to ensure the control wire is pushed all the way in to the interior connector. See page 13. |
| The lock sends an error signal when unlocking or locking and the deadbolt will not extend or retract properly. | <ul style="list-style-type: none"> Unlock the door using a key or the interior knob. While the door is open, check that the deadbolt operates smoothly. Check for proper alignment of the strike plate and adjust as needed to ensure there is no binding against the deadbolt. |
| The deadbolt is sticking. | Installation screws of the lock may be too tight. <ul style="list-style-type: none"> Remove the interior assembly. Slightly loosen the mounting plate screws. Lock and unlock using the key. Reattach the control wire and interior assembly. |

18

Audio and Visual Messaging Guide

| Status | Message |
|---|--|
| Lock successful/Unlock successful. | Two short beeps and LED flashes green two times. |
| Unlock failed due to invalid code. | Three short beeps and LED flashes red three times. |
| Lock failed due to restriction. Lock fails to re-lock after 3 attempts. | Ten short beeps and LED flashes red ten times. |
| Low battery. | Six short beeps and LED flashes red six times. |
| Super low battery. | Four short beeps and LED flashes red four times. |
| Power on. | Three short beeps and LED illuminates green. |

Note: When the battery voltage falls below the Low Battery threshold, the lock will continue to operate. Once the battery voltage falls below the Super Low Battery threshold, the lock will no longer operate and the batteries must be replaced immediately.

19

Operational Specifications

Operating temperature: -31°F (-35°C) to 140°F (60°C)

Water resistance rating: IP54*

* MojoLock meets IP54 standards, which is equivalent to exposure to rain. ShowMojo will not warranty MojoLocks that have been exposed to a high-pressure water stream such as from a pressure washer.

Battery life (alkaline batteries): 12 months, based on 10 lock cycles per day.

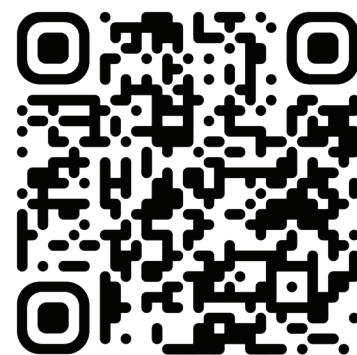
Battery backup: Micro USB port.

20

Customer Support

For MojoLock customer support inquiries, go to:

<https://mojolock-g4-support.mojoaaccess.com>

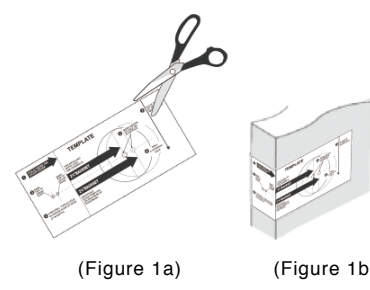


21

Prepare Door and Jamb

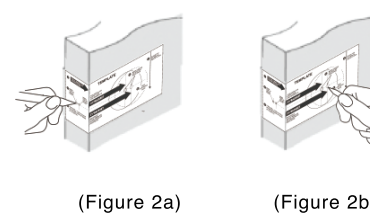
1. Template:

- Cut out the template printed on page 24 of this manual (Figure 1a).
- Fold the template and place on door 36" (915mm) above the floor as marked (Figure 1b).



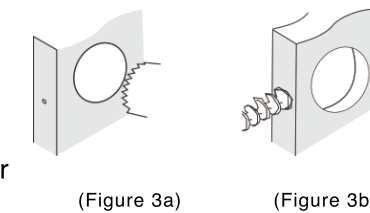
2. Mark the door for drilling:

- Mark center hole on door edge using guidance on the template for 1" (25mm) deadbolt (Figure 2a).
- Mark center hole on door face using guidance on the template for 2-3/8" (60mm) or 2-3/4" (70mm) backset. (Figure 2b)



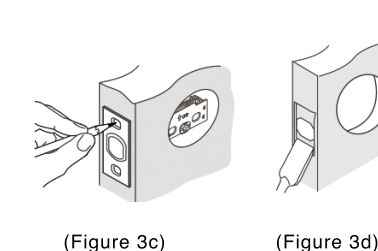
3. Drill and chisel door:

- Drill 2-1/8" (54mm) hole through door panel as marked for the deadbolt (Figure 3a).
- Drill 1" (25mm) hole in the center of door edge for the deadbolt (Figure 3b).



Prepare Door and Jamb

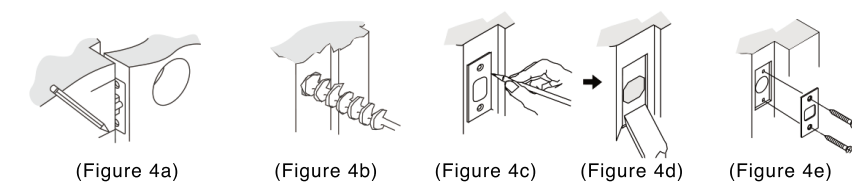
- Insert the deadbolt in hole, keeping it parallel to the face of the door. Mark the outline and remove the deadbolt (Figure 3c).
- Chisel 5/32" (4mm) deep or until the deadbolt face is flush with the door edge (Figure 3d).



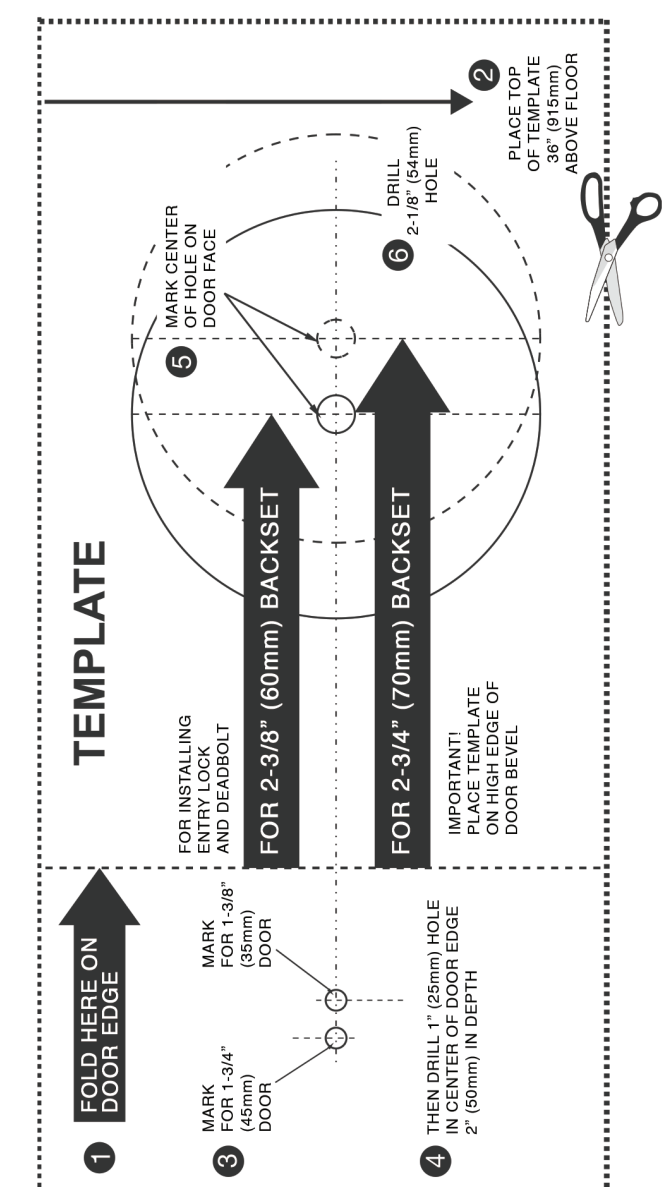
Note: For a drive-in latch, drill the hole size as indicated on the template and press the latch until it is flush with the door edge.

4. Mark and drill door jamb:

- Mark center hole on the edge of the jamb, level with the center of the deadbolt on the door edge (Figure 4a).
- Drill 1" (25mm) hole 1-3/16" (30mm) deep in the door jamb on the center mark (Figure 4b).
- Outline the outside edges of the strike plate (Figure 4c).
- Chisel 5/32" (4mm) deep for the strike plate or until it is flush (Figure 4d).
- Install the strike plate using two 3/4" (9mm) screws provided (Figure 4e).



23



24