



SAMPLE
CITY, STATE



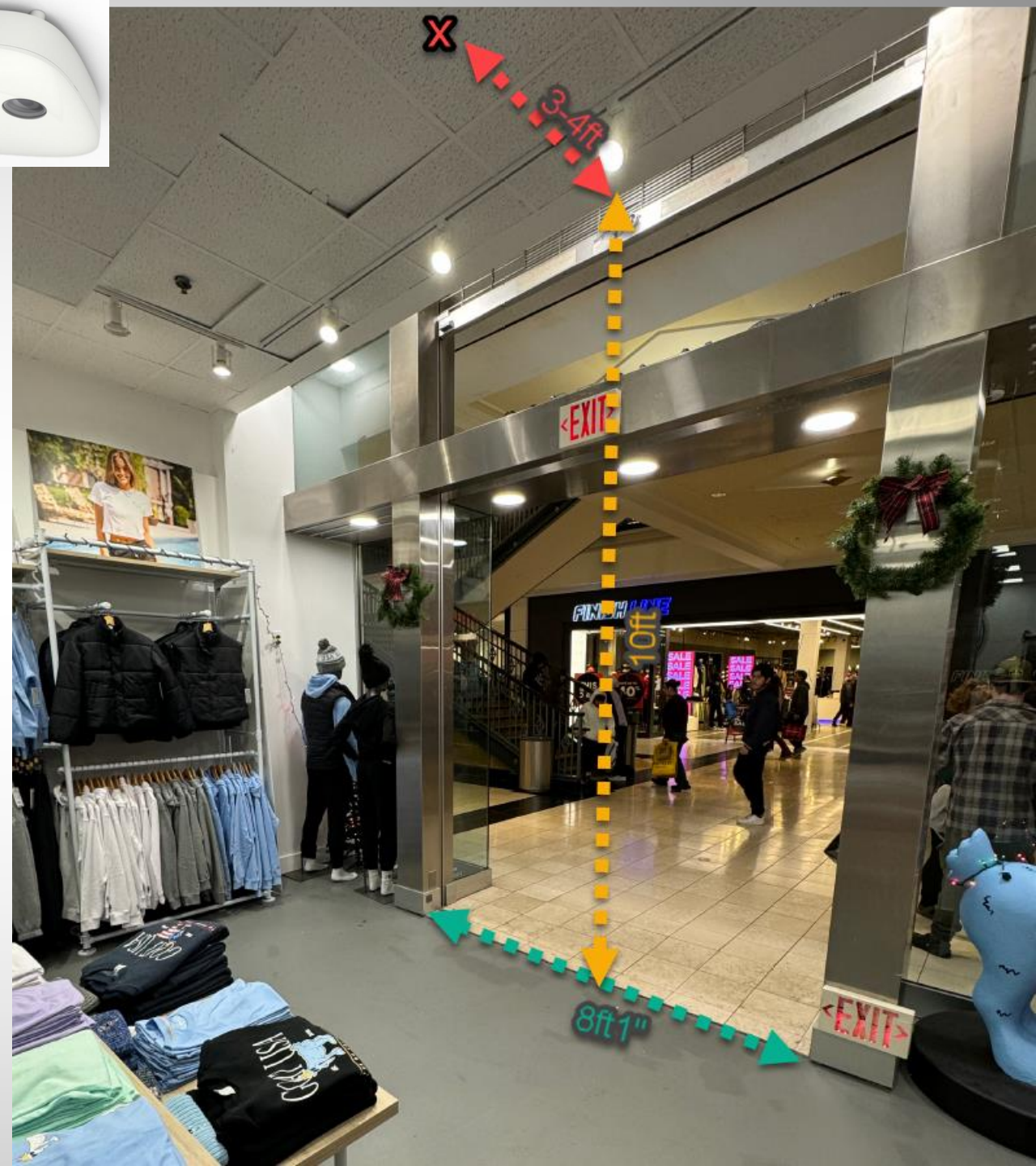
Main entrance

Type of Counter : 3D II Scope LC

- Entrance height : 10ft
- Entrance width : 8ft1"
- # of Devices : 1
- SMS Bracket Needed: No

Install point:

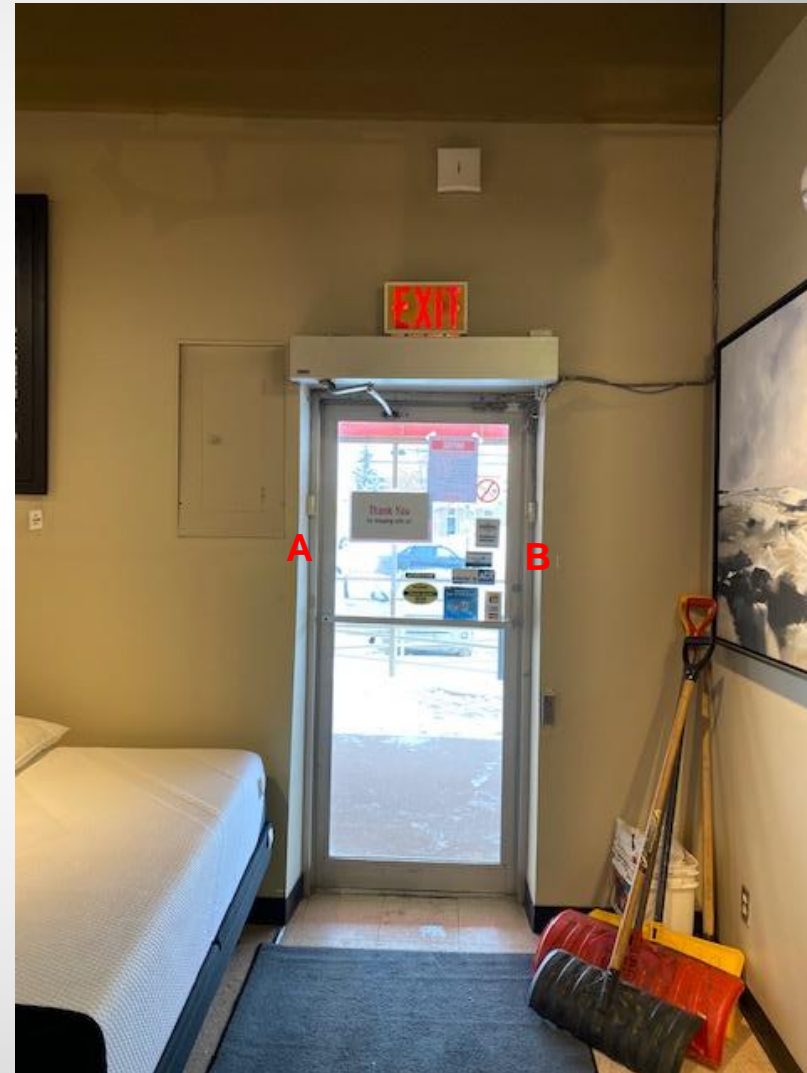
- At 10 ft high, directly on ceiling
- Centered
- 3-4ft into the store, where the "x" is marked
- NOTE: 3D Counter must stay minimum 1ft clear of lights/hanging objects



Side Door

Type of Counter : PEARL

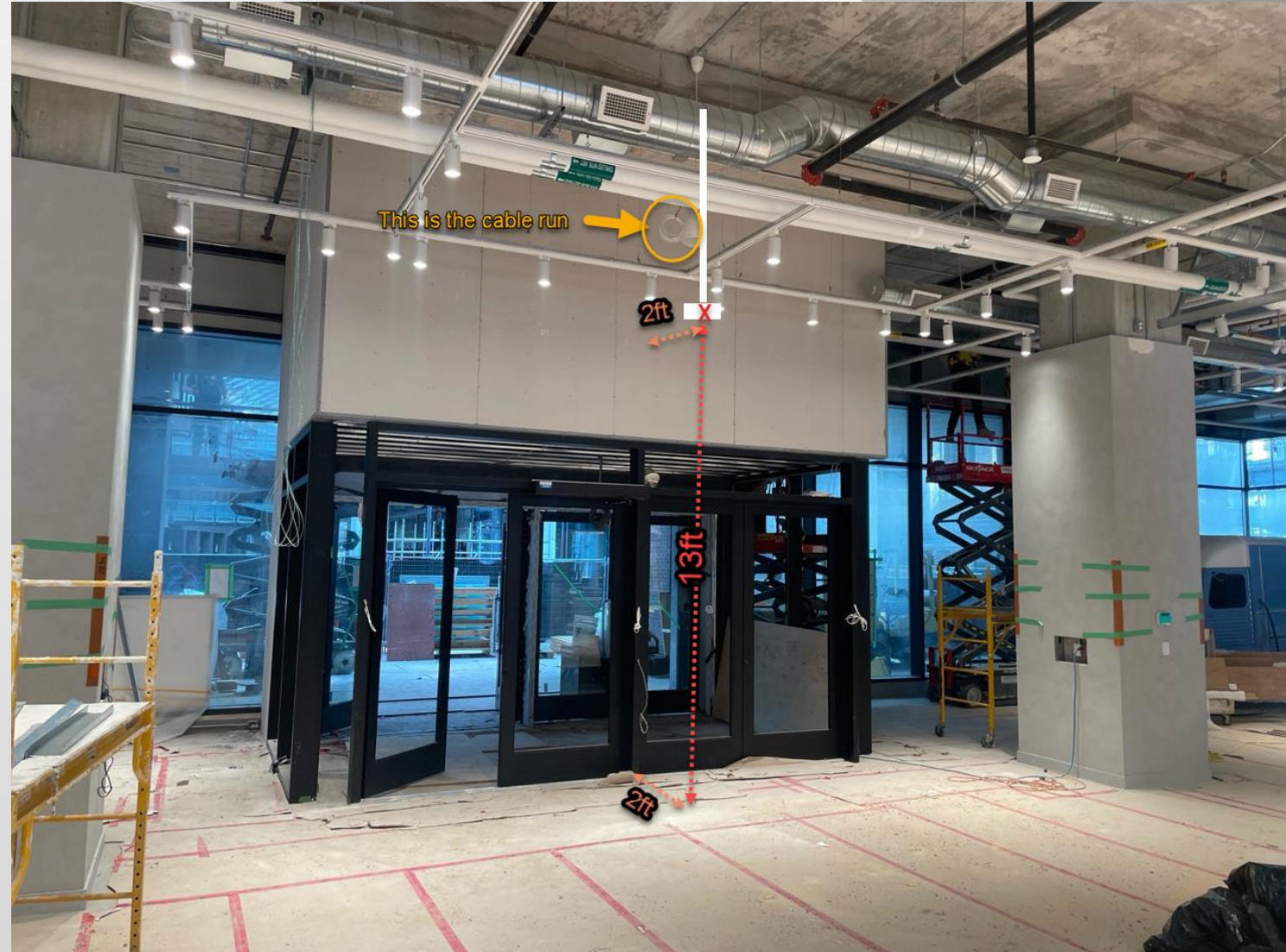
- **Ceiling Height** : 13.5 ft
- **Entry Width** : 3ft
- **Install point:**
 - **Main unit** where the "A" is marked, 4.5 feet high, on side of the doorway
 - **Secondary unit** where the "B" is marked, on the opposite side of the doorway
- **# of Devices** : 1



Main entrance

Type of Counter: 3D II Scope LC

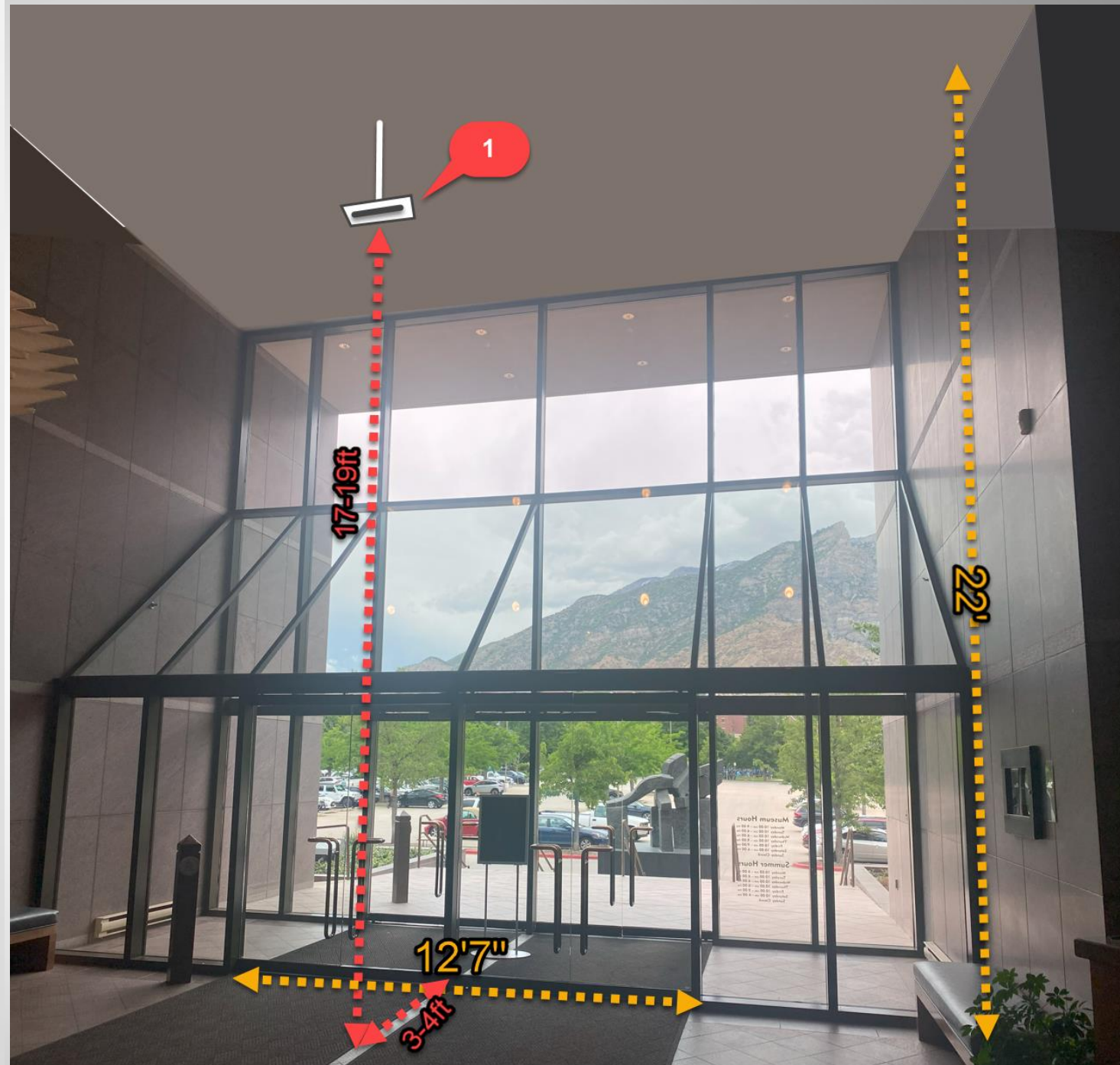
- Entrance height: 20 Feet Approx
- Entrance width: 16 Feet
- **SMS Bracket Needed:** SMS has provided a mounting bracket, but technician's decision on whether or not it is required
- **Install point:**
 - camera lowered from the ceiling with a conduit pole to 13ft high
 - centered to the entrance
 - 2 feet into the store
 - and staying clear of hanging lights.
- **# of Devices: 1**
- **IMPORTANT :** Conduit pole to be provided by installer



Main Entrance

Type of Counter : 3D II Scope HC

- Entrance height : 22ft
- Entrance width : 12ft7in
- **Install point:** At 17-19ft high, lowered from the ceiling on SMS bracket, centered, 3-4ft into the venue (in front of doors), where the "1" is marked.
- # of Devices : 1
- SMS Bracket Needed: Yes



Entrance 3

EXAMPLE



Type of Counter : 3D Scope HC (fusion mode)

Remove Old Counter: No

- Ceiling Height : 22.83ft
- Install point: each camera @ 15ft high with bracket from wall, 11ft away from lateral wall, leaving 18ft between these 2 – lights might need to be shifted on rail + SMS will shade these while calibrating
- Width : 39.58ft
- # of Devices : 2
- SMS Bracket Needed: Yes

