

Administrator's Guide

Version 1.1

Contents

Introduction:.....	3
ThinScale VDA Requirements:.....	4
Installation.....	5
Management Platform installation	9
Silent installation:.....	11
Uninstalling ThinScale VDA:.....	12
ThinScale VDA Profile Editor:	13

Introduction:

The ThinScale Virtual Desktop Agent (ThinScale VDA) is supplementary component to ThinKiosk and Secure Remote Worker which is installed on Remote Desktop Session Hosts (RDSH) and Virtual Desktops.

The ThinScale VDA communicates with ThinKiosk / Secure Remote Worker, installed on the end point of the connecting device, via display protocol virtual channels.

The ThinScale VDA currently supports for the following remote desktop products:

- Citrix Virtual Apps and Desktops
- Windows Virtual Desktops
- RDP connections to RDSH or Virtual Desktops.

- Support for VMware Horizon (RDP, PCoverIP, Blast) are coming soon.

The ThinScale VDA provides context information from the connecting endpoint allowing you apply additional security policies and provide a better end user experience.

During logon or reconnect to an RDSH or Virtual Desktop the ThinScale VDA performs checks against the connecting endpoint and based on the configuration may prevent the connection.

Battery and Wi-Fi information from the connecting endpoint are also optionally displayed in the system tray of the remote session.

The connecting endpoints device inventory is also optionally stored in the registry of the remote session allowing 3rd party applications to use this information to provide better context and security within the virtual desktop session.

ThinScale VDA Requirements:

ThinScale VDA has a specific set of requirements detailed below:

- Windows 7 / Windows Server 2008 R2 and above
- .NET Framework 4.5 and above

Profile Sources

ThinScale VDA configuration settings are stored in a profile; this profile file is stored locally and can be modified with the ThinScale VDA Profile Editor.

The profile (TSTVDAProfile.json) is located in the installation directory. This file is directly editable via the ThinScale VDA Profile Editor Utility. (*please see the Profile Editor Section for more details*).

Alternatively, you can have the configuration centrally managed by connecting ThinScale VDA to the ThinScale Management Platform.

Note: If configured to use the ThinScale Management Platform the ThinScale VDA will keep a local copy of the profile it receives just in case it loses connectivity to the Management Server. This allows ThinScale VDA to work offline for extended periods without interruption.

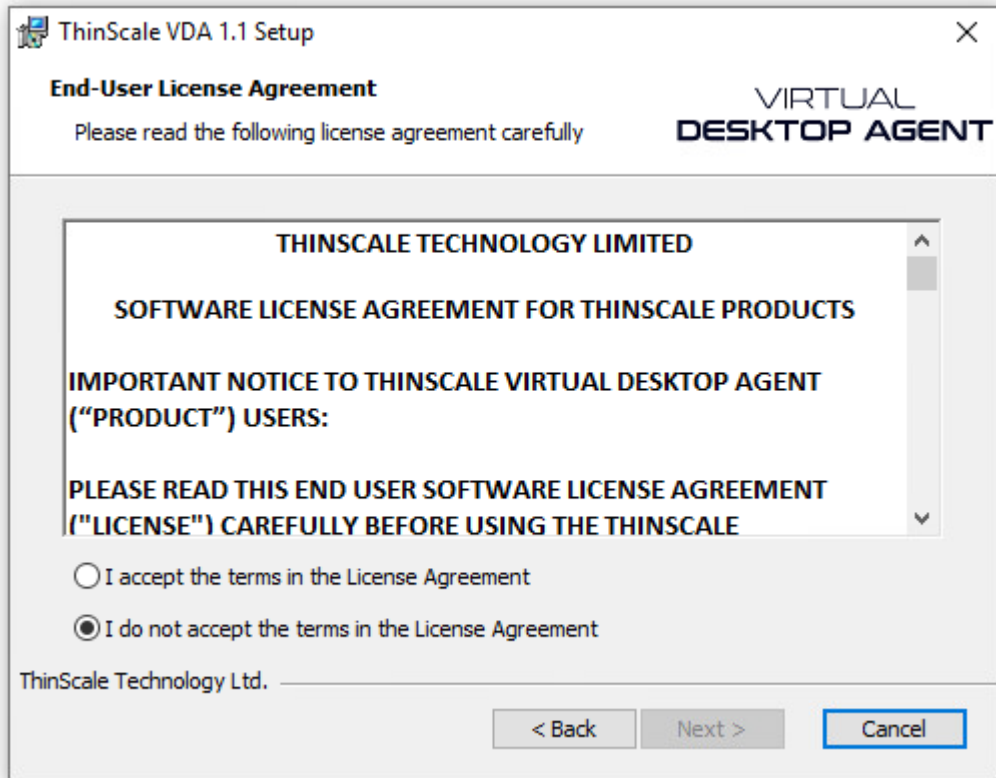
Installation

Local profile installation

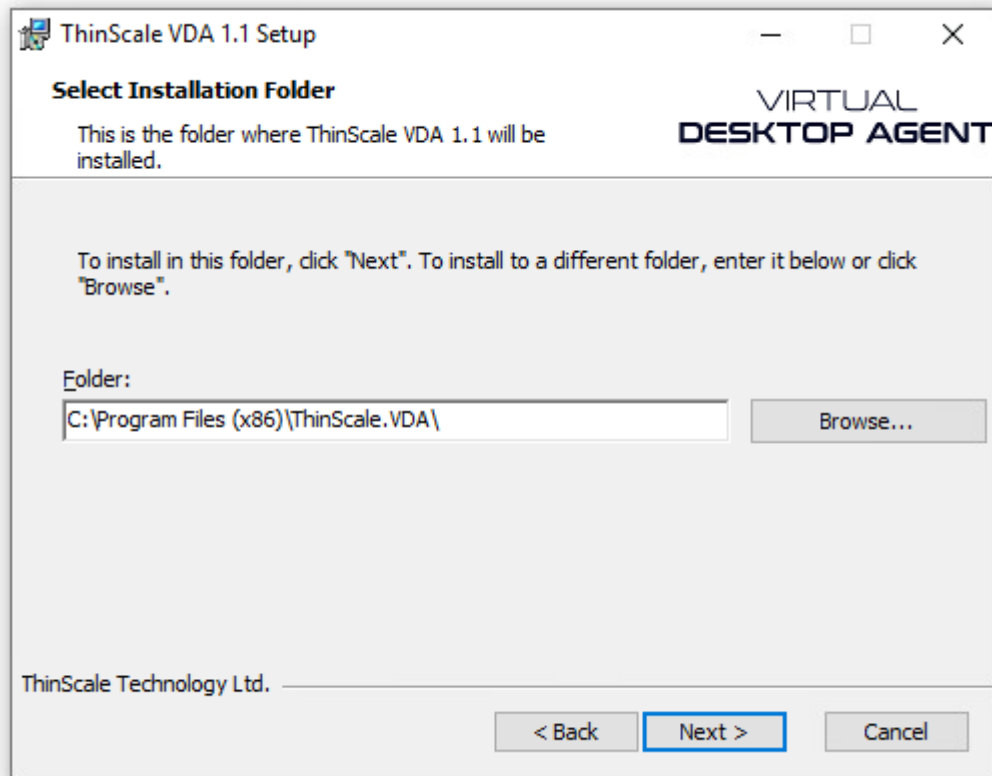
Without the ThinScale Management Platform, VDA profiles will need to be configured individually, however it will be possible to deploy the TSTVDAProfile.json file with any deployment tool, to replicate the configuration to all other servers in the environment.



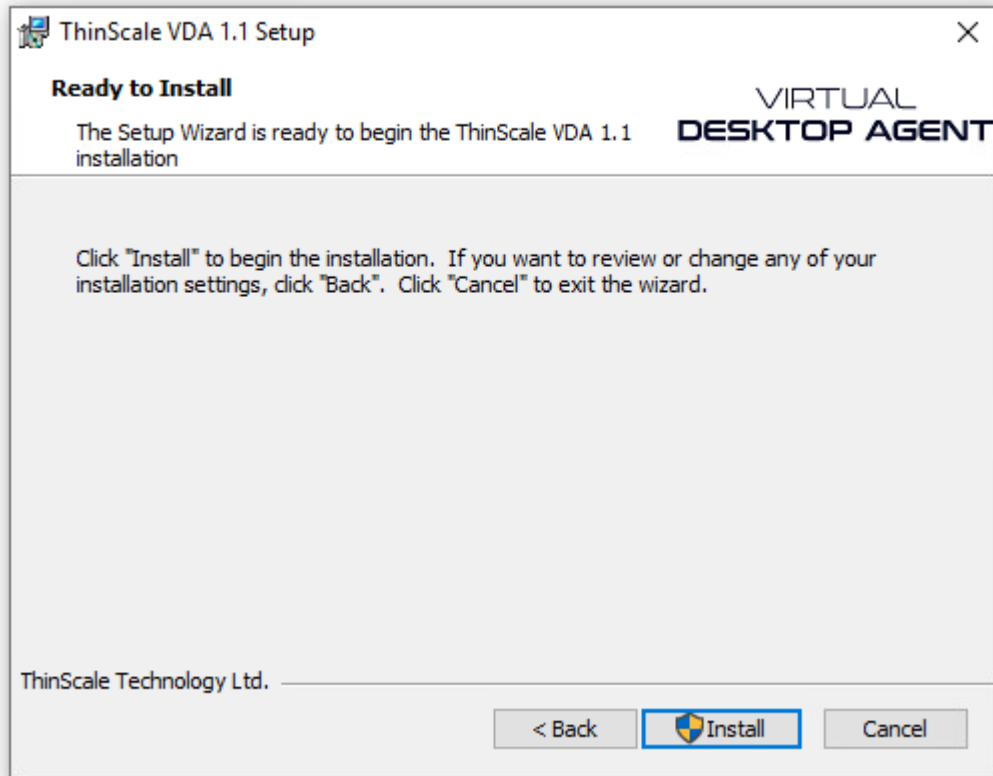
Click Next



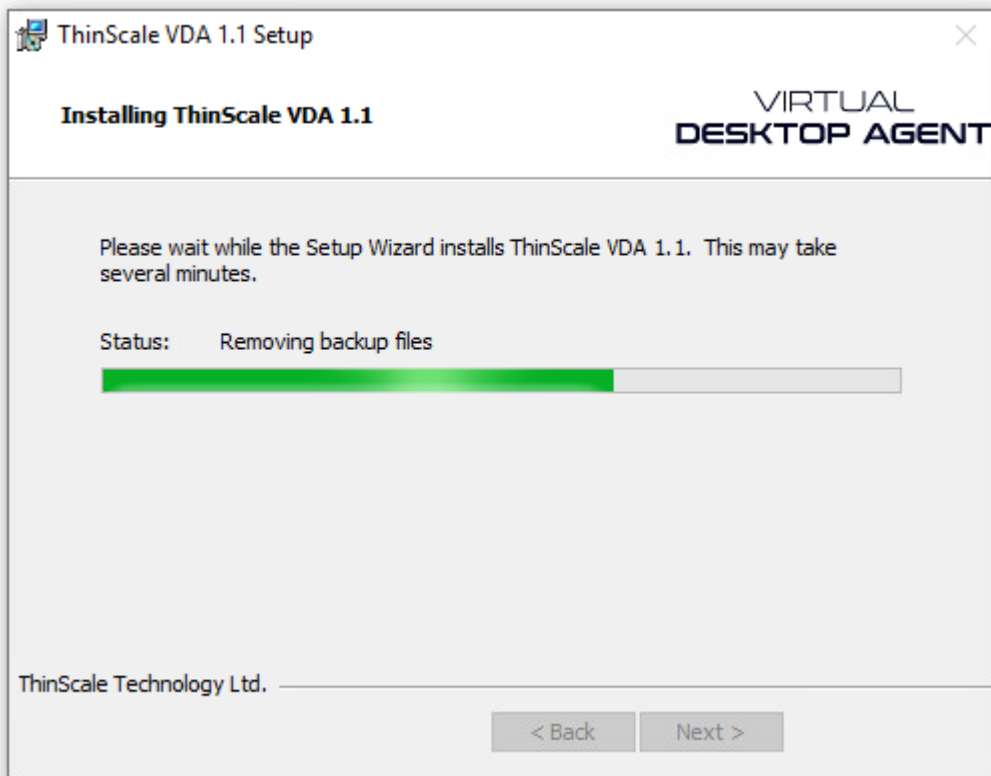
Accept and click Next

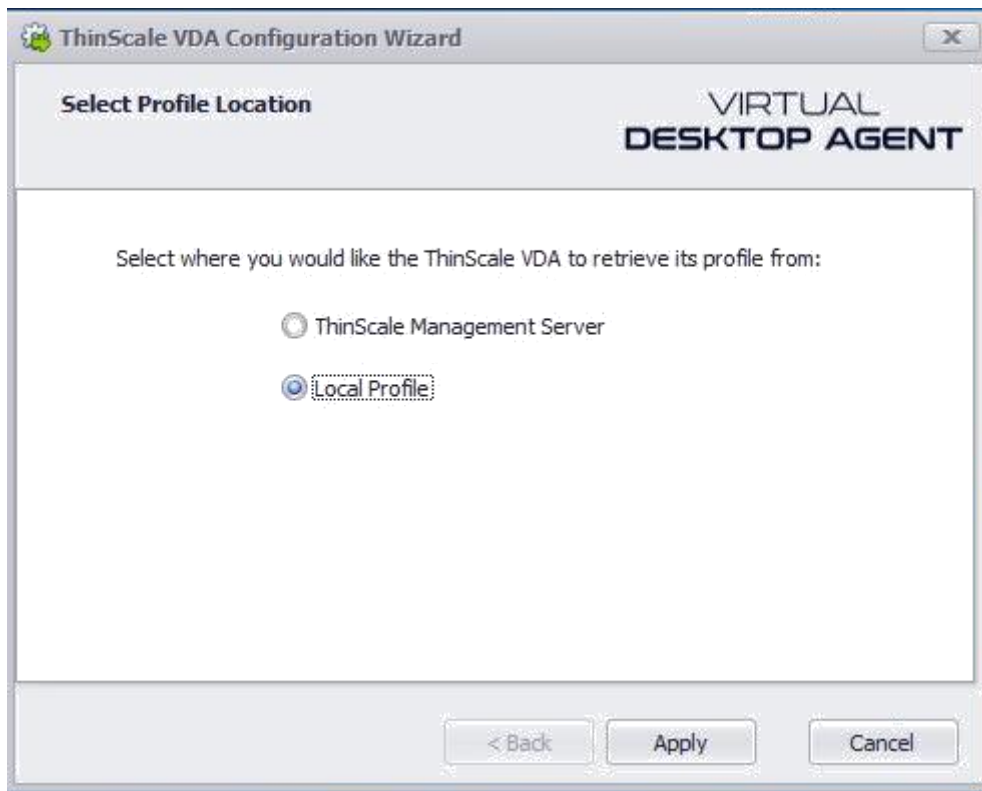


Select the destination installation folder and click 'Next'

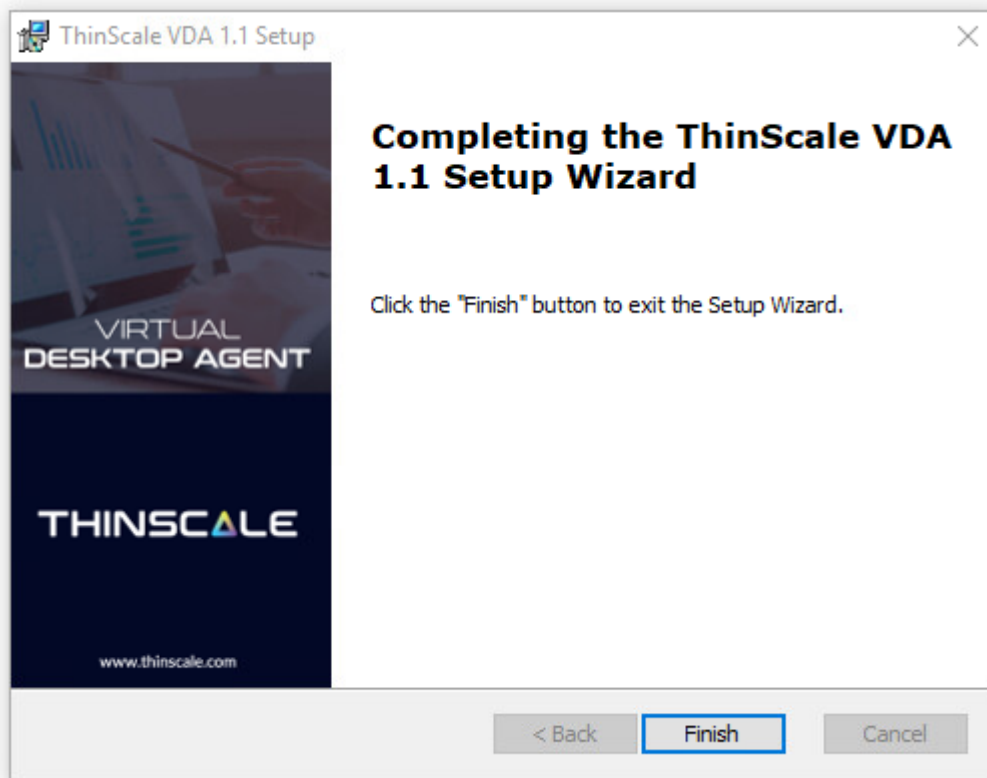


Click Install and you are almost done.





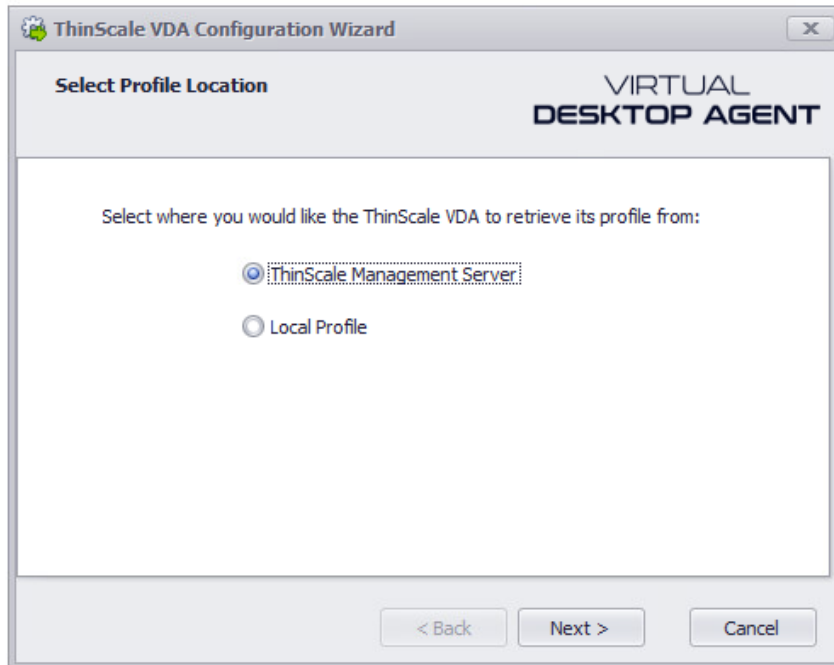
When installing a standalone ThinScale VDA select Local Profile, click Apply and you are finished.



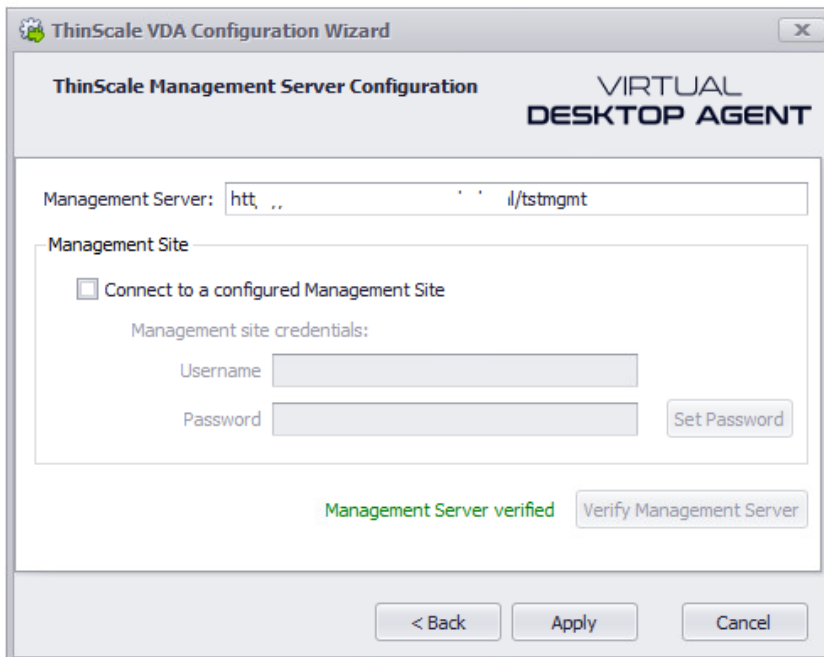
A reboot might be required after Finish.

Management Platform installation

The installation steps to connect ThinScale VDA to the Management Server are the same as a standalone installation, the only difference is the use of ThinScale Management Server option.



Select the ThinScale Management Server option and click Next.



Enter the Management Server's URI

To connect to the 'Default Site' within the Management Console, leave 'Connect to a configured Management Site' unselected. If want to connect to an alternative site you have created, select 'Connect to a configured Management Site' and enter the credentials of the site.

(Note: for more information on Management Server Sites, please refer to the ThinScale Management Console Administrators guide)

Click 'Verify Management Server'.

Click 'Apply'.

Silent installation:

ThinScale VDA 's installation MSI supports silent installation for both a local profile and connecting to the Management Platform

Silent install options

Command Line Option	Description
CONNECTIONTYPE	Configures the ThinScale VDA profile source 0 = ThinScale Management Server 2 = Standalone
MGMTURI	The address of a ThinScale Management Server e.g. https://tstmgmtserver.domain.local/TSTMgmt
MGMTDEFAULTSITE	Configures ThinScale VDA to connect to the 'Default Site' in the Management Platform 1 = Use Default Site
MGMTUSERNAME	The username associated with the Management Site you want this ThinScale VDA device to connect via. <i>(for more information on Management Sites, please see the ThinScale Management Console Administrators Guide)</i>
MGMTPASSWORD	The password associated with the Management Site you want this ThinScale VDA device to connect via. <i>(for more information on Management Sites, please see the ThinScale Management Console Administrators Guide)</i>

Examples

1. Install ThinScale VDA with no interaction with a centrally delivered profile from the Management Server using your own site:
 - *Please note a "Site" must have been created beforehand within the ThinScale Management Console*

```
msiexec /I ThinScaleVDA-1.1.X.msi CONNECTIONTYPE=0  
MGMTURI=http://YOURSERVER/tstmgmt MGMTUSERNAME=XXXXXX  
MGMTPASSWORD=XXXXXX /QB /L *V "%USERPROFILE%\VDA.LOG
```

Uninstalling ThinScale VDA:

Note: The Uninstall must be performed by a user with administrator privileges on the local device.

ThinScale VDA is an MSI based installation and will appear in Program and Features within Windows Control Panel.

To uninstall:

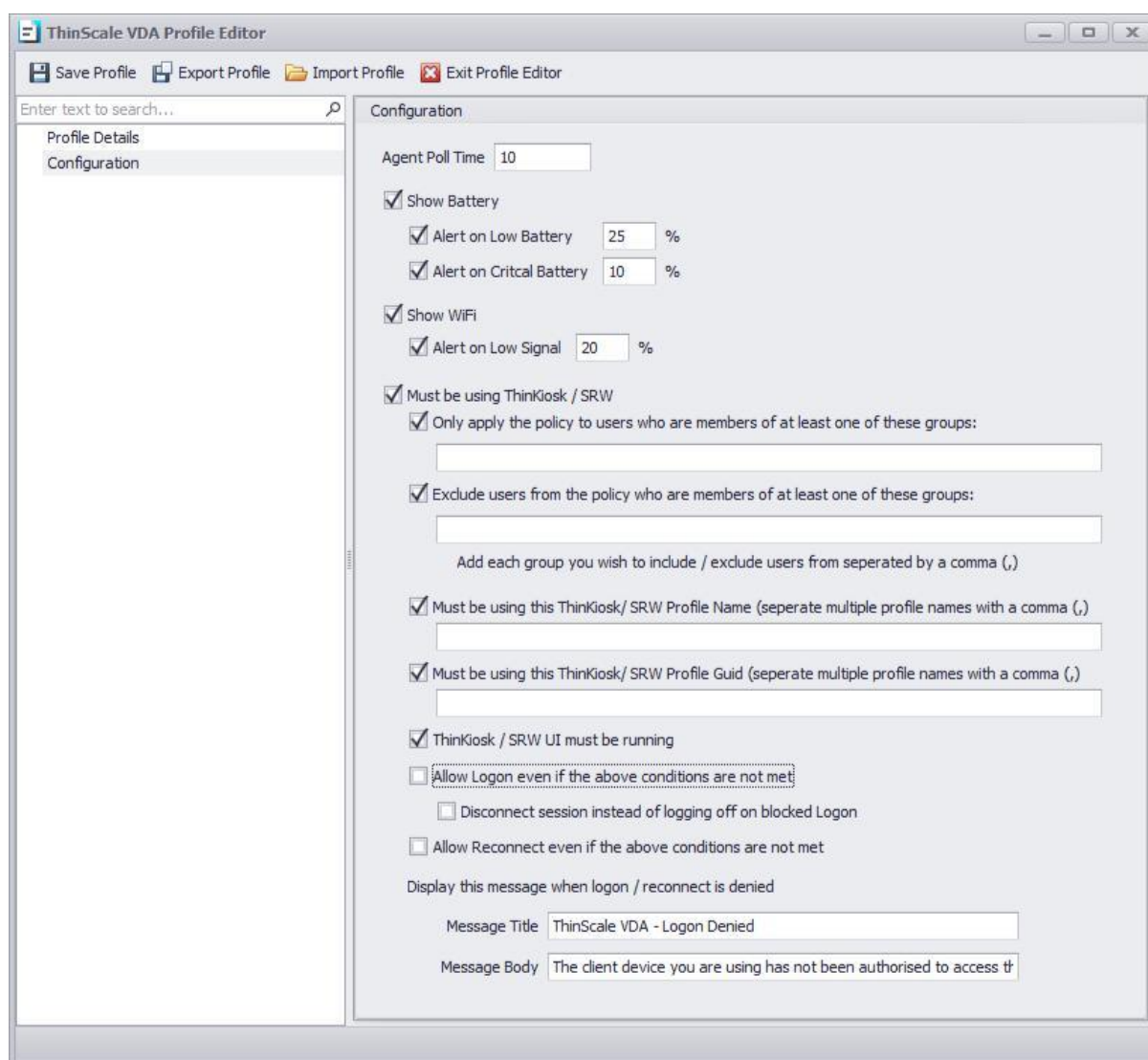
- Open Control Panel
- Select Programs -> Program and Features
- Right click ThinScale VDA and select 'Uninstall'
- Follow the uninstall instructions

A reboot will be required once the uninstall has completed.

ThinScale VDA Profile Editor:

The profile editor can be accessed in 2 separate ways depending on the profile delivery method you have enabled:

- **ThinScale Management Server** - From the ThinScale Management Console, right click your profile and select 'Edit Profile'.
- **Local Profile** - From the ThinScale VDA device select the 'ThinScale VDA Profile Editor' from the Start Menu.



The screenshot shows the 'ThinScale VDA Profile Editor' window. The title bar includes 'ThinScale VDA Profile Editor' and standard window controls. The menu bar contains 'Save Profile', 'Export Profile', 'Import Profile', and 'Exit Profile Editor'. On the left, there is a search bar and a sidebar with 'Profile Details' and 'Configuration' tabs. The main area is titled 'Configuration' and contains the following settings:

- Agent Poll Time: 10
- Show Battery
 - Alert on Low Battery: 25 %
 - Alert on Critical Battery: 10 %
- Show WiFi
 - Alert on Low Signal: 20 %
- Must be using ThinkKiosk / SRW
 - Only apply the policy to users who are members of at least one of these groups: [text input]
 - Exclude users from the policy who are members of at least one of these groups: [text input]
 - Add each group you wish to include / exclude users from separated by a comma (,)
- Must be using this ThinkKiosk/ SRW Profile Name (separate multiple profile names with a comma (,)) [text input]
- Must be using this ThinkKiosk/ SRW Profile Guid (separate multiple profile names with a comma (,)) [text input]
- ThinkKiosk / SRW UI must be running
- Allow Logon even if the above conditions are not met
 - Disconnect session instead of logging off on blocked Logon
 - Allow Reconnect even if the above conditions are not met
- Display this message when logon / reconnect is denied
 - Message Title: ThinScale VDA - Logon Denied
 - Message Body: The client device you are using has not been authorised to access t

Agent Poll Time

Describes how often (in seconds) the agent will communicate with ThinKiosk or SRW running on the end point.

Show Battery

If enabled, the battery status of the end point will be shown in the system tray of the RDSH/VDI session.

Alert on Low Battery

If enabled, a notification will be displayed when remaining battery percentage falls below the specified value.

Alert on Critical Battery

If enabled, a notification will be displayed when remaining battery percentage falls below the specified value.

Show Wi-Fi

If enabled, the Wi-Fi information the end point will be shown in the system tray of the RDSH/VDI session.

Alert on Low Signal

If enabled, a notification will be displayed when the Wi-Fi signal strength falls below the specified value.

Must be using ThinKiosk/SRW

If enabled, users will only be allowed to connect to the RDSH / VDI host from an endpoint with ThinKiosk or SRW installed.

Only apply the policy to users....

If enabled, the ThinScale VDA will only perform connection checks for users that are a member of one of the configured groups.

Exclude users from the policy...

If enabled, the ThinScale VDA will not perform connection checks for users that are a member of any of the configured groups.

Must be using ThinKiosk Profile Name

If enabled, users will only be allowed to connect to the RDSH / VDI host from an endpoint with one of the configured ThinKiosk / SRW profile names applied.

Must be using ThinKiosk Profile Guid

If enabled, users will only be allowed to connect to the RDSH / VDI host from an endpoint with one of the configured ThinKiosk / SRW profile ID's applied.

ThinKiosk/SRW UI must be running

If enabled, users will only be allowed to connect to the RDSH / VDI host from an endpoint that has the ThinKiosk / SRW user interface running.

Allow Logon even if...

If enabled, users will be allowed to login to the RDSH/VDI session, even if they don't meet the specified conditions.

Disconnect session instead of...

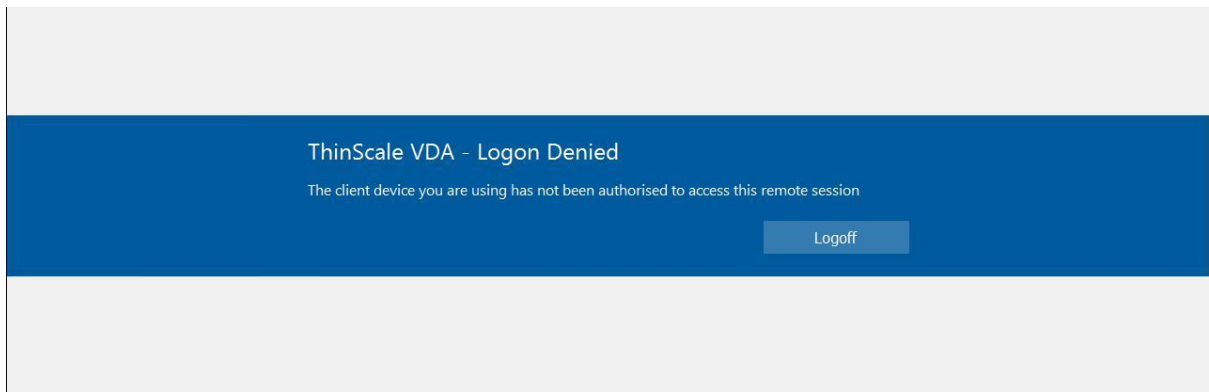
If enabled, denied users will be disconnected instead of being logged out from their RDSH/VDI session.

Allow Reconnect even if...

If enabled, users will be allowed to reconnect to an existing RDSH/VDI session, even if they don't meet the specified conditions.

Display this message when...

Specify your own message to the denied users.



For any queries in relation to ThinScale VDA profile or settings please contact us at

support@thinscaletechnology.com

or alternatively visit our new Knowledge Base

<https://kb.thinscale.com>