

THINSCALE

Validation Tool V 7.1





Table of Content

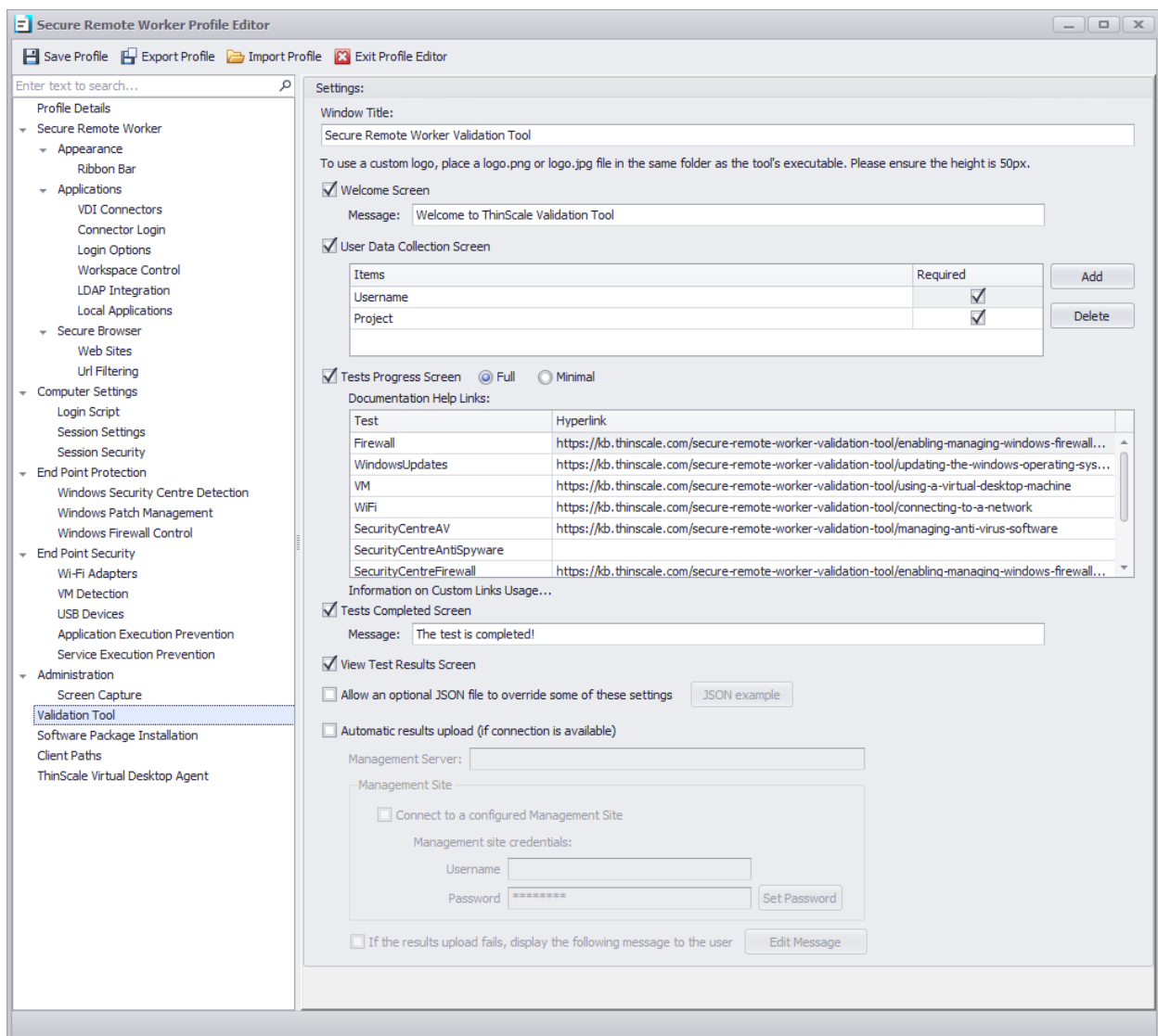
Table of Content	1
1. Introduction	2
2. Pages	3
3. Further settings	6
Optional JSON settings override.....	6
4. Using the Single Click Installer	7



1. Introduction

The Validation Tool is a separate executable (.exe) that can run independently before Secure Remote Worker (SRW) is installed. It will check whether the profile requirements you have set (Windows Patching, Firewall, VM, WiFi, Security Centre and Access Policies) will allow, warn or stop SRW when it is installed. This allows your support team to make sure your employee's machines meet your requirements before installation.

- Distribute the Validation Tool (.exe) alongside the Profile (.json) that the end-user will be using when they are running SRW.
- This tool will **NOT** install any software on the PC.
- You can customise the look and feel of the Validation Tool in the profile editor:



The Validation Tool has several pages that you can customise and switch on/off:



2. Pages

1. Welcome Screen

- Display a custom user message

2. User Data Collection Screen

- Here you can add additional parameters that will help Admins identify where the test has been performed or gather extra information about the PC or the employee e.g. Staff ID, Department, Full Name
- Example Profile Editor settings:

User Data Collection:	
Items	Required
Full Name	<input checked="" type="checkbox"/>
Staff ID	<input checked="" type="checkbox"/>
Department	<input type="checkbox"/>

- This will make the Validation Tool display:

Secure Remoter Worker Validation Tool — □ ×

Full Name

Staff ID

Department



3. Tests Progress Screen

- This will display the status of the running tests. A full display will show the status of each test and any helpful links you have specified:

Secure Remoter Worker Validation Tool

Running Checks...

Rule	Status	
Public IP Address Changed	Pass	
Client Version	Pass	
CPU Count	Pass	
Total Physical Memory	Pass	
Is 64-Bit Operating System	Pass	
Monitor Count	Pass	
Device has NTFS Volume	Pass	
Boot Free Space	Pass	
Windows Update Compliant	Pass	
Virtual Machine Detection	Warning	Click Here for Help to Fix
Wi-Fi Adapter Detection	Failed	Click Here for Help to Fix
Wi-Fi Adapter Connected	Pass	
Download Bandwidth	Running	
Upload Bandwidth	Running	
Anti-Virus Healthy	Pass	
Anti Spyware Healthy	Pass	
Windows Update Healthy	Pass	
Firewall Healthy	Pass	
Windows Build Number	Pass	
CPU Type	Pass	
Virtual Machine is Hyper-V	Failed	Click Here for Help to Fix

Re-run Tests Back Next Cancel

- The tests will run depending on your profile settings. For example, if the End Point Protection is enabled, the tool will run an Anti-Virus, Firewall and Windows Update status check. A Pass, Failed, Warning result will be displayed to the user, depending on the results.
- If any of the checks fail, you can provide a web page link to help assist in resolving the issue.
- You can use the help provided to resolve the issue and then click “Re-run” to run the test process again.
- You can repeat as often as necessary to see if you have resolved your issue.

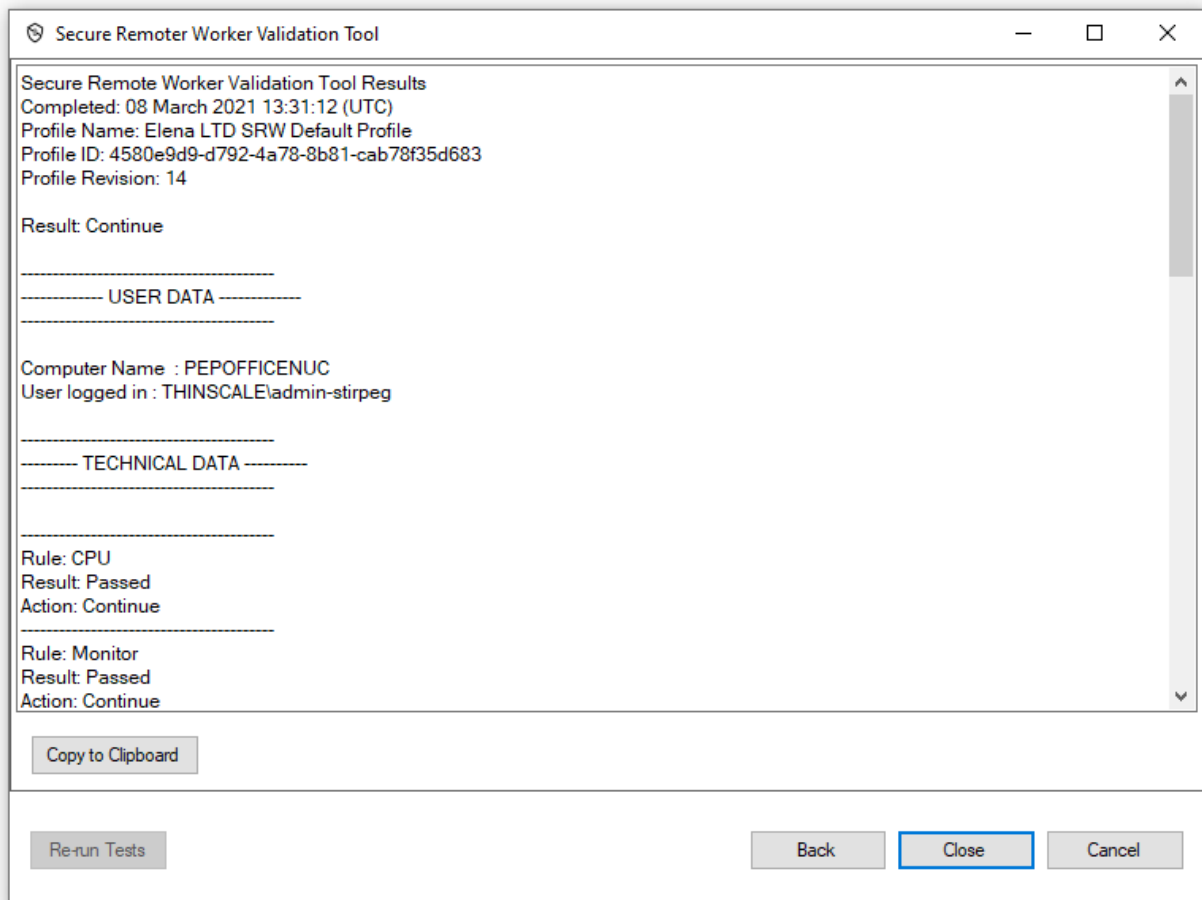


4. Tests Completed Screen

- Display a custom user message

5. Tests Results Screen

- A technical data output of the entire test will be shown, where the user can “Copy to Clipboard” the results and then paste this into an email or notepad file if needed by your support team.

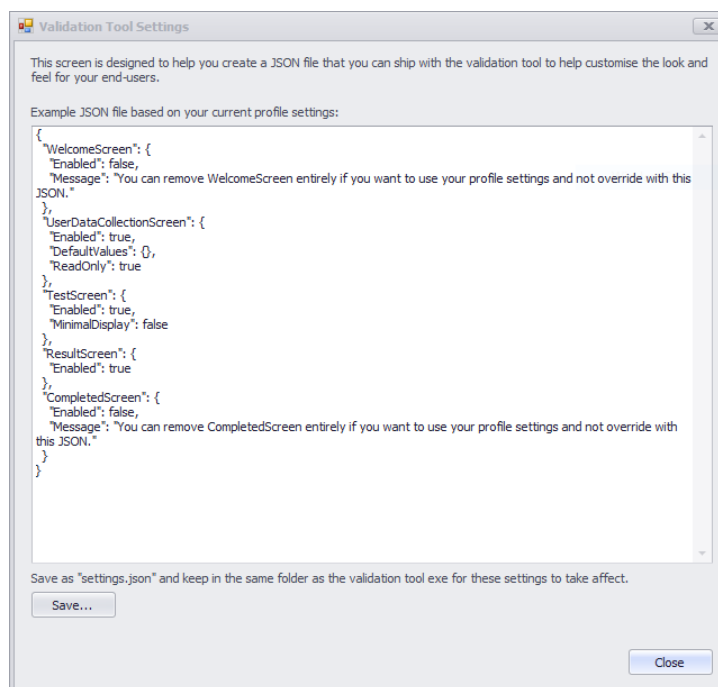




3. Further settings

Optional JSON settings override

When enabled, the Validation Tool will look for a file named “settings.json”. It will attempt to read in these settings and if successful it will override any profile settings you may have. Customers find this useful as a quick and easy way to script changes to the Validation Tool without editing the Profile it is supplied with.



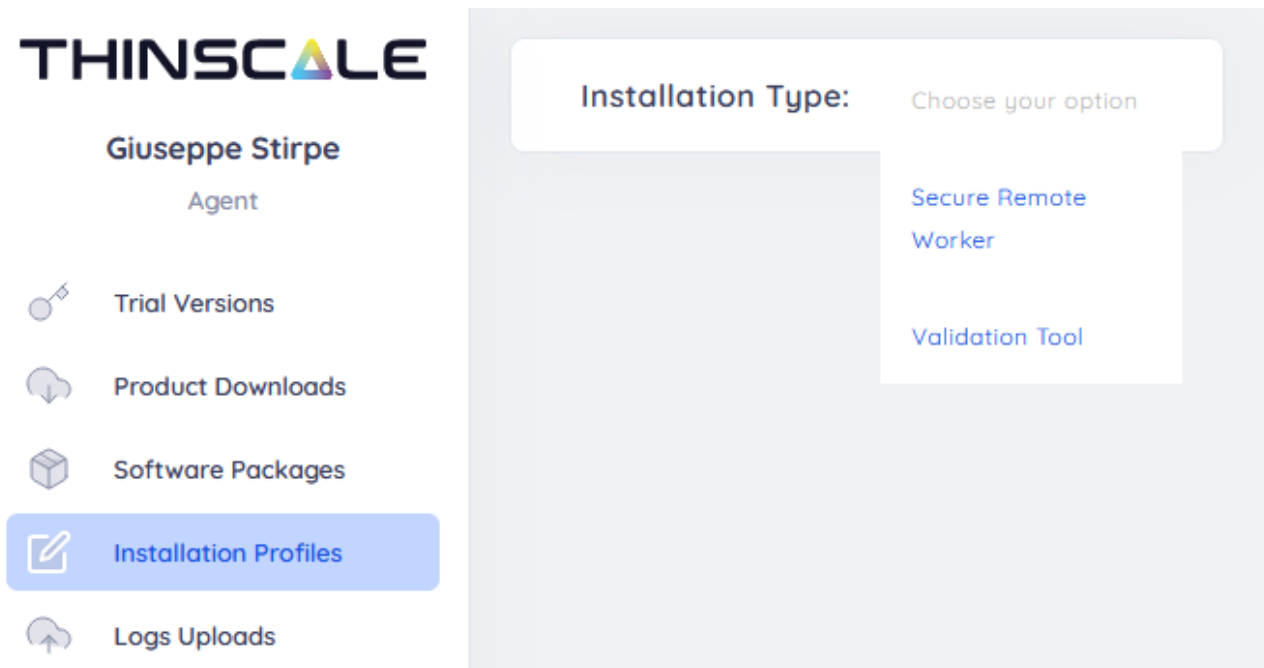
For any queries, please contact support@thinscaletechnology.com



4. Using the Single Click Installer

Create an account into <https://my.thinscale.com>

And select Create Validation Tool Profile from the Installation Profiles Tab





Details

Profile Name	Software Version	Download Location
VT Name	7.0.69	Northern Europe
<hr/>		
Description		
VT Description		

User Interface Customization

NO
LOGO

Title
VT Title
<hr/>
Message
VT Message
<hr/>
10/500

Security Access Codes

Add Rule

Secure Remote Worker Management Server Details

Management Server Uri
<hr/>
Use Default Site
<hr/>

Cancel Save Profile



Click on the link generated and download the single click installer.



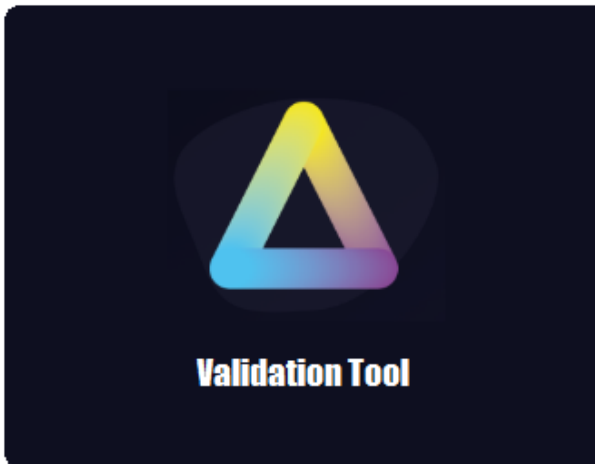
THINSCALE

VT Title

VT Message

Your download should begin shortly. If your download has not started after 30 seconds please [click here](#) to manually download.

© Copyright ThinScale 2021. All UserRights Reserved.



THINSCALE

VT Title

VT Message

Cancel

Install



Secure Remoter Worker Validation Tool
— □ ×

Running Checks...

Rule	Status	
AP Default Security Centre Rule	Pass	
AP Default Windows Patch Rule	Running	
AP Default Virtual Machine Rule	Warning	Click Here for Help to Fix
AP Default Wi-Fi Adapter Rule	Warning	Click Here for Help to Fix

Re-run Tests
Back
Next
Cancel

The results will be displayed inside the Management Console.

PEPOFFICENUC
Inventory Reporting

- General
- Device Inventory Changes
- Device Stats
- Validation Results

Date Time	Device Name	Product Name	Version	Profile Name	Profile Revision	Result
18 July 2020 22:44	PEPOFFICENUC	Validation Tool	6.2.37.7498	SRW PEPPE	1	Close
17 July 2020 12:46	PEPOFFICENUC	Validation Tool	6.2.37.7498	SRW PEPPE	1	Close
14 July 2020 16:44	PEPOFFICENUC	Validation Tool	6.2.37.7498	SRW PEPPE	75	Close
14 July 2020 16:39	PEPOFFICENUC	Validation Tool	6.2.37.7498	SRW PEPPE	75	Close
14 July 2020 16:09	PEPOFFICENUC	Validation Tool	6.2.37.7498	SRW PEPPE	75	Close
14 July 2020 11:14	PEPOFFICENUC	Validation Tool	6.2.37.7498	SRW PEPPE	70	Close
10 July 2020 18:40	PEPOFFICENUC	Validation Tool	6.2.33.7494	SRW PEPPE	35	Close
10 July 2020 18:02	PEPOFFICENUC	Validation Tool	6.2.33.7494	SRW PEPPE	35	Close
10 July 2020 13:51	PEPOFFICENUC	Validation Tool	6.2.33.7494	SRW PEPPE	20	Close
10 July 2020 13:47	PEPOFFICENUC	Validation Tool	6.2.33.7494	SRW PEPPE	19	Close