

# THINSCALE

## Validation Tool V 7.5





Table of Content

Table of Content..... 1

1. Introduction .....2

2. Pages .....3

3. Further settings .....6

    Optional JSON settings override (Applicable only for 6.2 client or older)..... 6

4. Using the Single Click Installer.....7

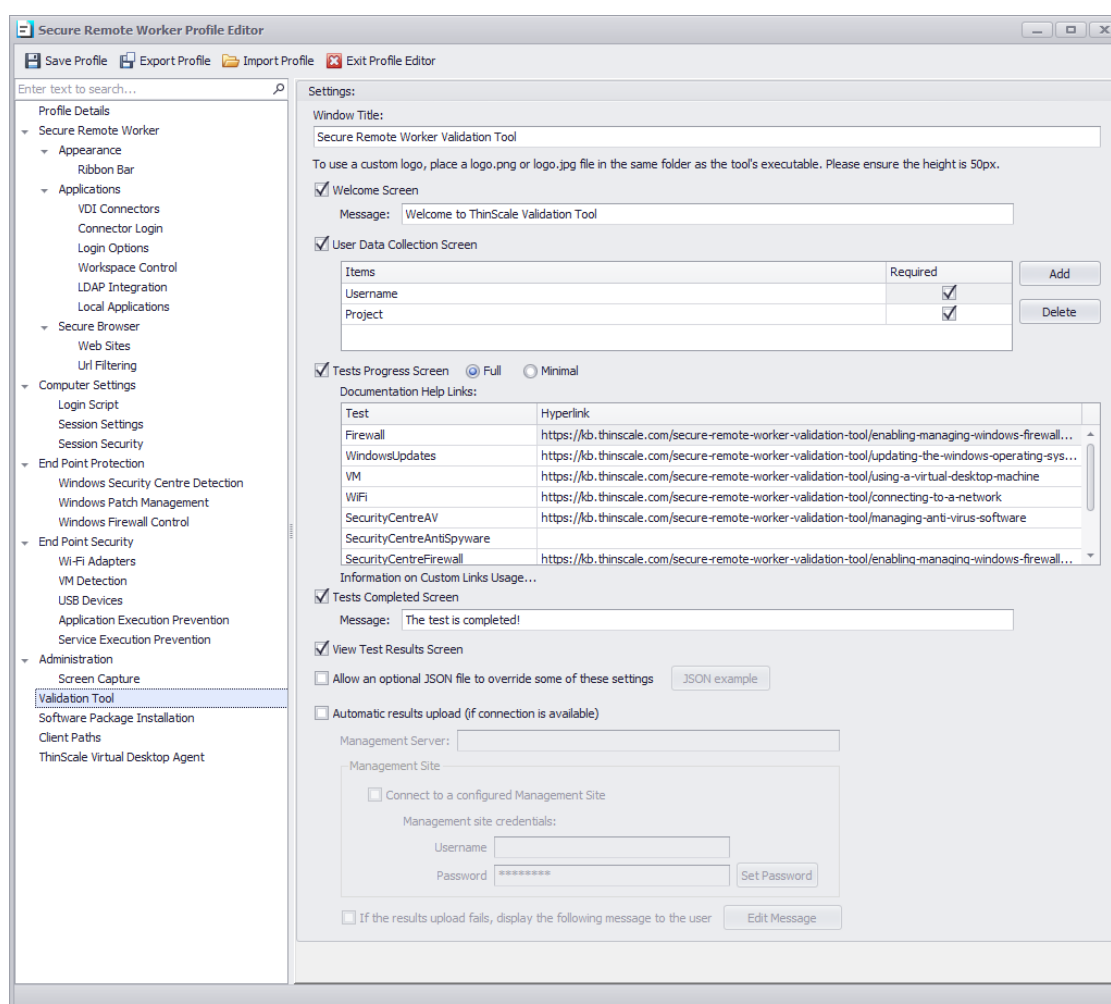


## 1. Introduction

The Validation Tool is a separate executable (.exe) that can run independently before Secure Remote Worker (SRW) is installed. It will check whether the profile requirements you have set (Windows Patching, Firewall, VM, WiFi, Security Centre and Access Policies) will allow, warn or stop SRW when it is installed. This allows your support team to make sure your employee's machines meet your requirements before installation.

- Distribute the Validation Tool (.exe) using the SCI via the portal (Index 4).
- This tool will **NOT** install any software on the PC.
- You can customise the look and feel of the Validation Tool in the profile editor:

○ *“Documentation Help Links” is only applicable only for 6.2 client or older*



The Validation Tool has several pages that you can customise and switch on/off:

## 2. Pages

### 1. Welcome Screen

- Display a custom user message

### 2. User Data Collection Screen

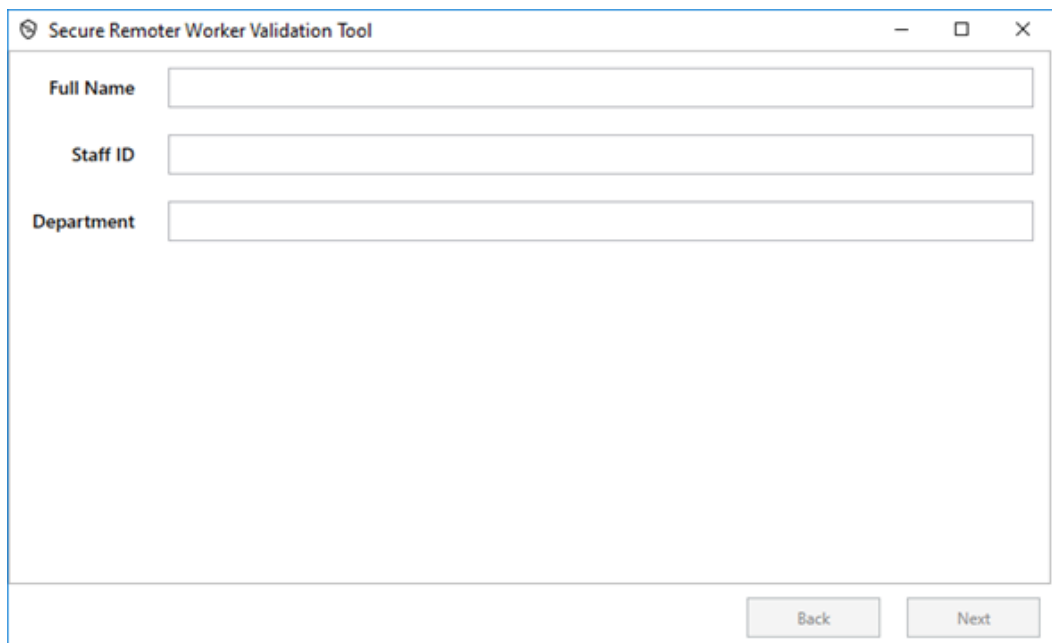
- Here you can add additional parameters that will help Admins identify where the test has been performed or gather extra information about the PC or the employee e.g. Staff ID, Department, Full Name
- Example Profile Editor settings:



The screenshot shows a 'User Data Collection' configuration window. It contains a table with two columns: 'Items' and 'Required'. The 'Items' column lists 'Full Name', 'Staff ID', and 'Department'. The 'Required' column has checkboxes, with 'Full Name' and 'Staff ID' checked and 'Department' unchecked. Below the table are 'Add' and 'Delete' buttons.

Items	Required
Full Name	<input checked="" type="checkbox"/>
Staff ID	<input checked="" type="checkbox"/>
Department	<input type="checkbox"/>

- This will make the Validation Tool display:



The screenshot shows a window titled 'Secure Remoter Worker Validation Tool'. It contains three input fields labeled 'Full Name', 'Staff ID', and 'Department'. At the bottom right are 'Back' and 'Next' buttons.

Full Name

Staff ID

Department



### 3. Tests Progress Screen

- This will display the status of the running tests. A full display will show the status of each test and any helpful links you have specified:

Secure Remoter Worker Validation Tool

Running Checks...

Rule	Status	
Public IP Address Changed	Pass	
Client Version	Pass	
CPU Count	Pass	
Total Physical Memory	Pass	
Is 64-Bit Operating System	Pass	
Monitor Count	Pass	
Device has NTFS Volume	Pass	
Boot Free Space	Pass	
Windows Update Compliant	Pass	
Virtual Machine Detection	Warning	<a href="#">Click Here for Help to Fix</a>
Wi-Fi Adapter Detection	Failed	<a href="#">Click Here for Help to Fix</a>
Wi-Fi Adapter Connected	Pass	
Download Bandwidth	Running	
Upload Bandwidth	Running	
Anti-Virus Healthy	Pass	
Anti Spyware Healthy	Pass	
Windows Update Healthy	Pass	
Firewall Healthy	Pass	
Windows Build Number	Pass	
CPU Type	Pass	
Virtual Machine is Hyper-V	Failed	<a href="#">Click Here for Help to Fix</a>

Re-run Tests Back Next Cancel

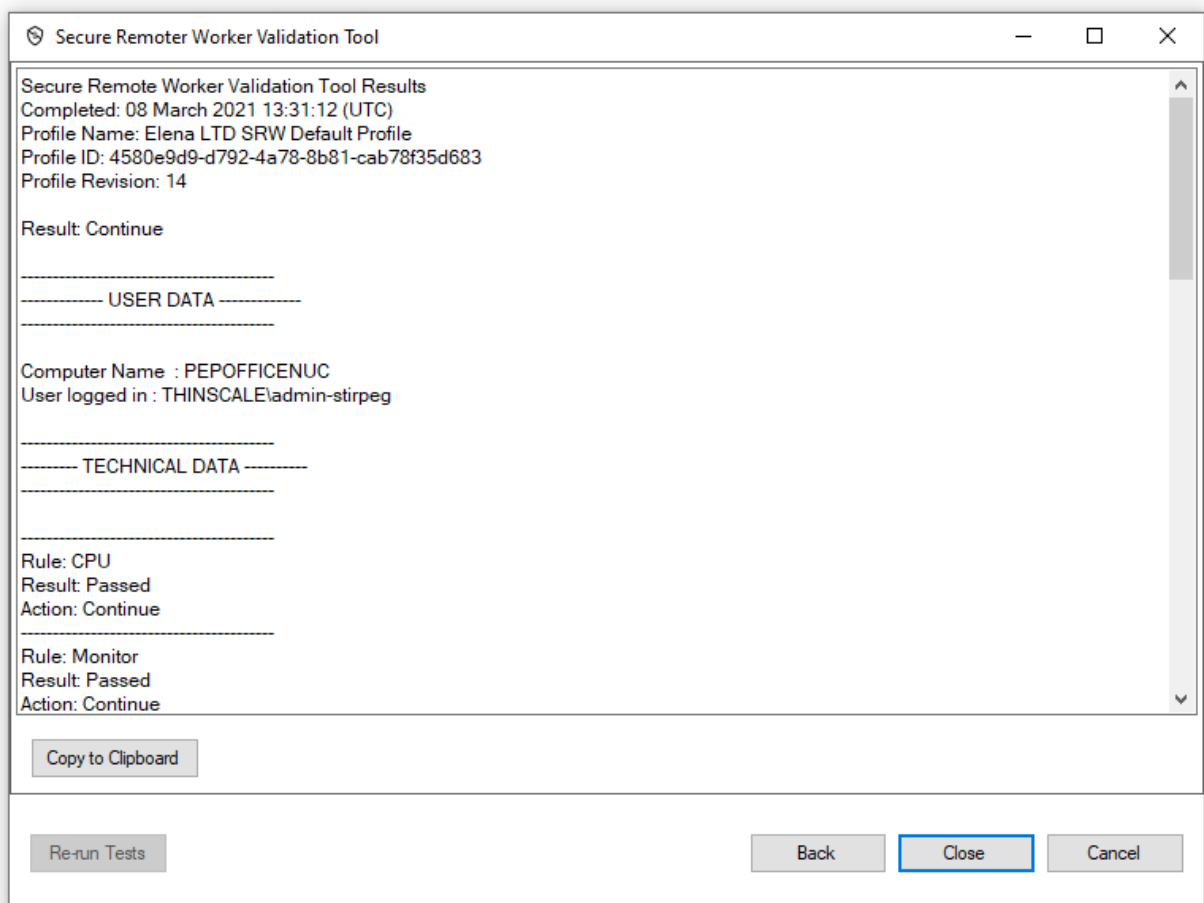
- The tests will run depending on your profile settings. For example, if the End Point Protection is enabled, the tool will run an Anti-Virus, Firewall and Windows Update status check. A Pass, Failed, Warning result will be displayed to the user, depending on the results.
- If any of the checks fail, you can provide a web page link to help assist in resolving the issue.
- You can use the help provided to resolve the issue and then click “Re-run” to run the test process again.
- You can repeat as often as necessary to see if you have resolved your issue.

#### 4. Tests Completed Screen

- Display a custom user message

#### 5. Tests Results Screen

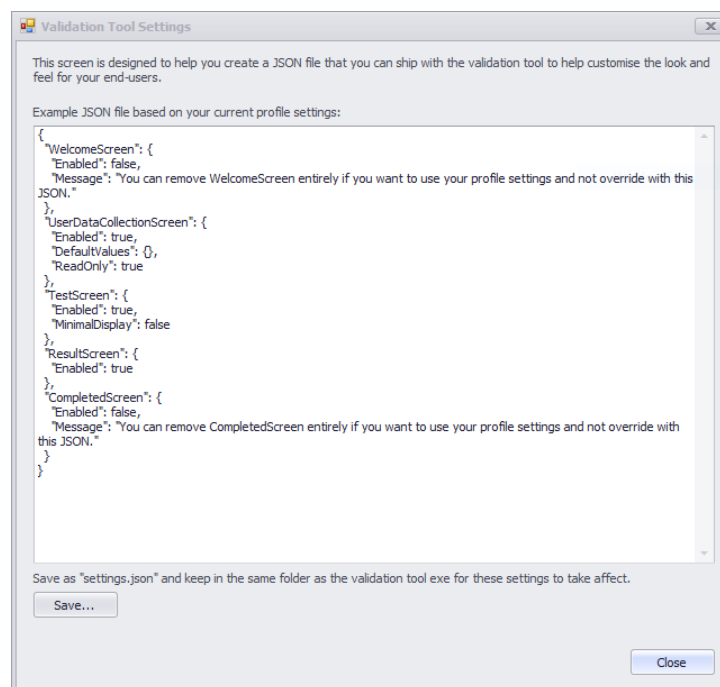
- A technical data output of the entire test will be shown, where the user can “Copy to Clipboard” the results and then paste this into an email or notepad file if needed by your support team.



### 3. Further settings

#### Optional JSON settings override (Applicable only for 6.2 clients or older)

When enabled, the Validation Tool will look for a file named “settings.json”. It will attempt to read in these settings and if successful it will override any profile settings you may have. Customers find this useful as a quick and easy way to script changes to the Validation Tool without editing the Profile it is supplied with.

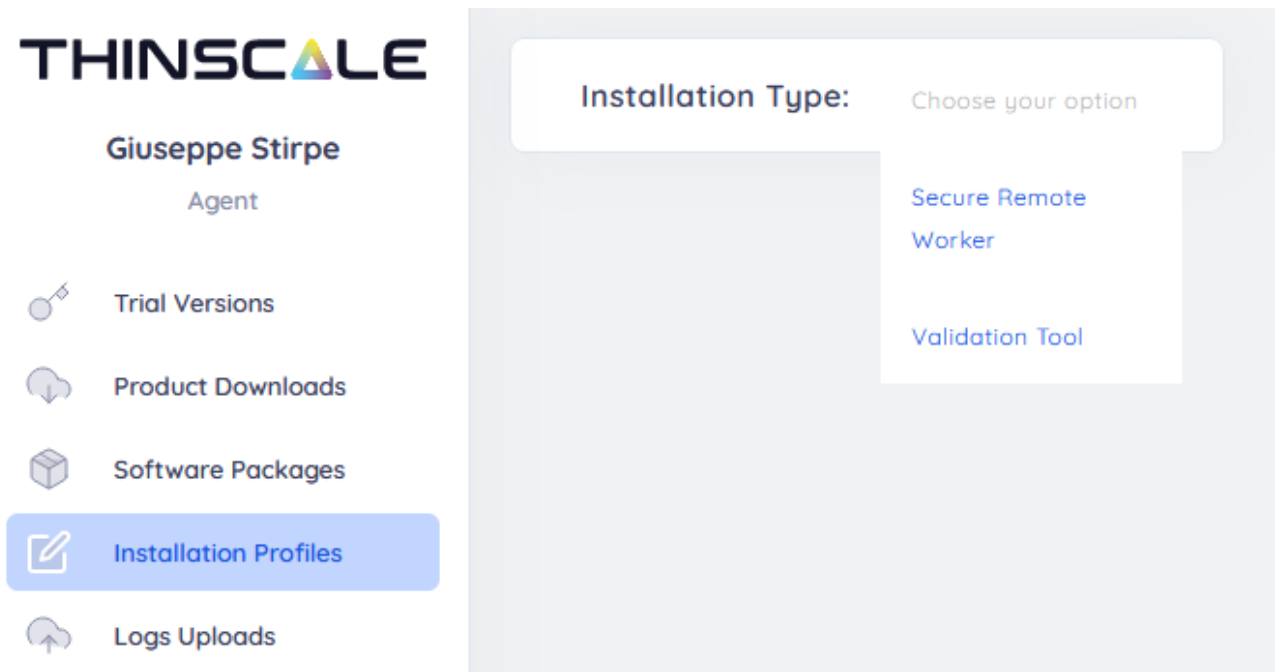


For any queries, please contact [support@thinscaletechnology.com](mailto:support@thinscaletechnology.com)

## 4. Using the Single Click Installer

Create an account into <https://my.thinscale.com>

And select Create Validation Tool Profile from the Installation Profiles Tab





Details

Profile Name	Software Version	Download Location
VT Name	7.0.69	Northern Europe
<hr/>		
Description		
VT Description	<div></div>	
<hr/>		

User Interface Customization

NO  
LOGO

Title

VT Title

Message

VT Message

10/500

Security Access Codes

Add Rule

Secure Remote Worker Management Server Details

Management Server Uri
<hr/>
Use Default Site
<div></div>

Cancel Save Profile



Click on the link generated and download the single click installer.

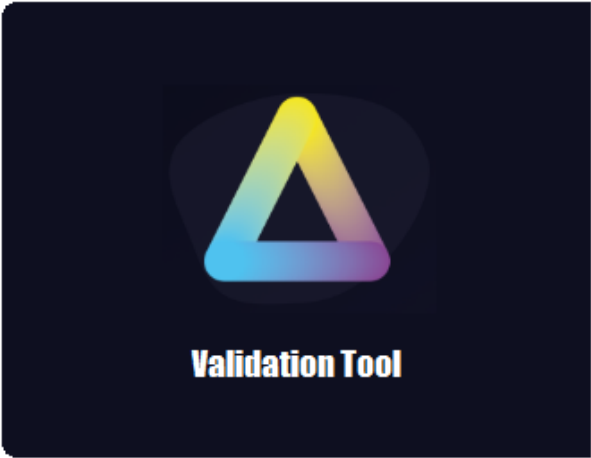


THINSCALE

VT Title  
VT Message

Your download should begin shortly. If your download has not started after 30 seconds please [click here](#) to manually download.

© Copyright ThinScale 2021. All UserRights Reserved.



THINSCALE

VT Title  
VT Message

Cancel

Install



Secure Remoter Worker Validation Tool

Running Checks...

Rule	Status	
AP Default Security Centre Rule	Pass	
AP Default Windows Patch Rule	Running	
AP Default Virtual Machine Rule	Warning	<a href="#">Click Here for Help to Fix</a>
AP Default Wi-Fi Adapter Rule	Warning	<a href="#">Click Here for Help to Fix</a>

Re-run Tests

Back

Next

Cancel

The results will be displayed inside the Management Console.

Validation Results						
Date Time	Device Name	Product Name	Version	Profile Name	Profile Revision	Result
10/07/2023 15:33:47	THINSCALE	Secure Remote Worker	7.5.6.8591	SRW FULL AEP	182	Continue
10/07/2023 15:30:11	THINSCALE	Secure Remote Worker	7.5.6.8591	SRW FULL AEP	181	Continue
10/07/2023 15:25:01	THINSCALE	Secure Remote Worker	7.5.6.8591	SRW FULL AEP	179	Continue
05/07/2023 10:09:30	THINSCALE	Secure Remote Worker	7.5.3.8581	SRW FULL AEP	179	Continue
05/07/2023 10:04:38	THINSCALE	Secure Remote Worker	7.5.3.8581	SRW FULL AEP	177	Continue
05/07/2023 09:59:58	THINSCALE	Secure Remote Worker	7.5.3.8581	SRW FULL AEP	177	Continue
02/07/2023 13:27:38	THINSCALE	Secure Remote Worker	7.5.3.8581	SBPOSRW	7	Continue
02/07/2023 12:58:09	THINSCALE	Secure Remote Worker	7.5.3.8581	SBPOSRW	7	Continue
29/06/2023 20:37:31	THINSCALE	Secure Remote Worker	7.4.51.8578	SBPOSRW	5	Continue
29/06/2023 20:22:34	THINSCALE	Secure Remote Worker	7.4.51.8578	SBPOSRW	5	Continue
29/06/2023 12:21:16	THINSCALE	Secure Remote Worker	7.4.51.8578	SBPOSRW	4	Continue
29/06/2023 12:16:02	THINSCALE	Secure Remote Worker	7.4.51.8578	SBPOSRW	3	Continue
29/06/2023 12:04:47	THINSCALE	Secure Remote Worker	7.4.51.8578	SBPOSRW	2	Continue
27/06/2023 21:59:59	THINSCALE	Secure Remote Worker	7.4.51.8578	vsdf	2	Close
27/06/2023 21:32:33	THINSCALE	Secure Remote Worker	7.4.51.8578	SRW FULL AEP	177	Continue
26/06/2023 15:39:38	THINSCALE	Secure Remote Worker	7.4.37.8438	SRW FULL AEP	177	Continue
26/06/2023 15:19:32	THINSCALE	Secure Remote Worker	7.4.37.8438	SRW FULL AEP	177	Continue
26/06/2023 15:18:23	THINSCALE	Secure Remote Worker	7.4.37.8438	SRW FULL AEP	176	Continue
26/06/2023 14:52:32	THINSCALE	Secure Remote Worker	7.4.37.8438	SRW FULL AEP	176	Continue
26/06/2023 14:45:15	THINSCALE	Secure Remote Worker	7.4.37.8438	SRW FULL AEP	176	Continue
26/06/2023 14:31:17	THINSCALE	Secure Remote Worker	7.4.37.8438	SRW FULL AEP	176	Continue
26/06/2023 13:31:29	THINSCALE	Secure Remote Worker	7.4.26.8361	SRW FULL AEP	176	Continue
26/06/2023 13:06:11	THINSCALE	Secure Remote Worker	7.4.26.8361	SRW FULL AEP	175	Continue
26/06/2023 13:04:08	THINSCALE	Secure Remote Worker	7.4.26.8361	SRW FULL AEP	174	Continue