



materialise

innovators you can count on

Materialise Magics

27.01 – Release Notes

July 2023



Contents

1	What's new in Magics 27.01	3
1.1	MatConvert 10.5 integration.....	3
1.2	Migrating and importing settings from previous versions.....	3
2	Bugfixes	4
3	Known issues	4
4	Compatibility	5
4.1	Bundled components	5
4.2	Compatibility with other Materialise product releases (**).....	5
4.3	Compatibility with other CAD packages	6
5	System Requirements	7
6	Contact Information	8

This document lists the main changes and fixes compared to the Magics 27.0 release.

1 What's new in Magics 27.01

1.1 MatConvert 10.5 integration

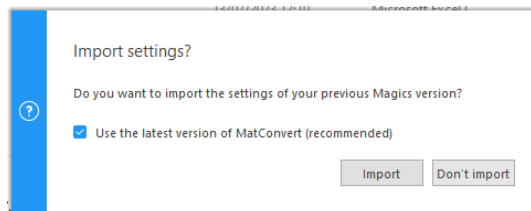
Magics 27.01 is bundled with MatConvert 10.5(*), bringing the latest version of our CAD import formats to Magics. Details can be found under '4.3 Compatibility with other CAD packages'.

* A new keyfile might be needed to be able to run MatConvert 10.5

1.2 Migrating and importing settings from previous versions

Some changes were made to the migration of settings from a previous Magics version, when starting Magics for the first time.

- The UI settings will no longer be migrated from a previous installation. This often caused new functionality to be absent or difficult to find back. It is anyway recommended to start a UI customization from the default Magics 27 UI, not from the (customized) UI of a previous Magics version. It still remains possible however to import/export UI settings between different versions via the "Customize UI" settings page.
- By default, Magics will now use the latest version of MatConvert instead of migrating the version used by a previous Magics version. An opt-out checkbox has been added in case you nevertheless want to use the previous setting.



Additionally, when importing a Magics profile through the regular "Import Magics Profile" function, an option was added to toggle the import of the MatConvert version setting.

2 Bugfixes

- Fixes in localization to Japanese and Korean
- The issue related to not being able to save a part with label planning in *.magics or *.matpart formats is fixed
- The 'support' line item in the part list is no longer visible in the part list of part scenes or platform scenes that are not connected with the CO-AM Machine Manager
- e-Stage is no longer generated in the wrong position through Export platform while having Z compensation and export slices parameters enabled and transformations applied to the part.
- Fix ability to open platforms with sinterboxes from Streamics.

3 Known issues

All the known issues mentioned in Release notes for Magics 27.0 remain valid for Magics 27.01 besides the ones related to above changes.

Additional known issues:

- The option to save multiple parts to one file is not available for *.magics format via the 'Save Selected Part(s)' command. Alternatively, 'Save Project' or 'Save scene' options can be used for this.

4 Compatibility

4.1 Bundled components

Product	Versions
Magics	27.0.1.13 or 14(*)
MatConvert	10.5.0.13
Build Process System	3.3.1 (*)
MatLicensing	7.4.4.0

(*) The only difference between Magics 27.0.1.13 and 27.0.1.14 is a minor update in documentation, which does not affect nor influence the functionality of the product itself. Both build versions are approved and validated.

4.2 Compatibility with other Materialise product releases (**)

Product	Versions
Streamics	8.3
Robot	8.3
3-matic	17.0
Simulation module	3.0.3
e-Stage	7.3
MatConvert	10.4
Build Processor System	3.3.1 (*)
CO-AM	release 100
CO-AM Machine Manager	1.1.69

For compatibility with specific Build Processors, please refer to the release notes of BPS and/or the specific Build Processor.

* Magics is fully compatible with older versions of the Build Process System (BPS) as well. The bundled BPS will only be installed in case the current BPS is not compatible with Magics 27 (BPS version lower than 1.7.16)

** Compatibility with newer versions of these products is expected unless explicitly mentioned in the respective release notes, and is nevertheless limited to existing functionality only. Any new functionality in these products cannot be guaranteed to be compatible with Magics 27.

4.3 Compatibility with other CAD packages

Magics 27.01 comes with MatConvert 10.5, which supports the below CAD formats. The **bold formats** have been updated compared to MatConvert 10.4 (which was bundled with Magics 27.0).

MatConvert is being released on a quarterly base, to ensure compatibility with the latest CAD formats, and can be downloaded and installed separately.

Please note that the 'all imports' license is needed for all these CAD formats, except for importing STEP files.

<i>Via 'Magics RP' base license</i>		
STEP	*.stp, *.step	AP203 (E1, E2), AP214 (up to E3), AP242 (E1,E2, E3)
VRML	*.vrl, *.vrm, *.x3dv	1.0 and VRML 97, X3D 3.3
<i>Via 'all imports' module</i>		
IGES	*.igs, *.iges	Version 5.3
ACIS SAT	*.sat	Up to 2022 1.0
JT	*.jt	6.4 to 10.7
Rhino	*.3dm	Rhino 7.11
CATIA 5	*.CATPart, *.CATProduct	R10 to V5-6R2023 (R33)
CATIA 6	*.3dxml	R2010x to R2023x
Pro/Engineer	*.prt, *.asm	2000i to Creo 9.0
Siemens NX	*.prt	15 to NX 2212 Series (to 2212.4000)
Parasolid	*.x_t, *.x_b	V7 to V35.1
SketchUp	*.skp	SketchUp 2022
Autodesk Inventor	*.ipt	9 to 2023
Revit	*.rvt	2011 to 2022
Solidworks	*.sldprt, *.sldasm	2006 to 2023
Solid Edge	*.par	10 to 2023

5 System Requirements

Hardware*	Software
<p>CPU</p> <ul style="list-style-type: none"> Intel Core i7 AMD Phenom II X4/ X6 at 3.0 GHz or higher with SSE2 technology 	<p>Materialise Magics 27 is only supported on Windows 64-bit**:</p> <ul style="list-style-type: none"> Windows 11 Windows 10 version 21H1 or later
<p>Memory</p> <ul style="list-style-type: none"> 16 GB RAM or higher 	<p>Materialise Magics 27 is recommended on:</p> <ul style="list-style-type: none"> Windows Pro edition Windows Enterprise edition
<p>Free Disk Space</p> <ul style="list-style-type: none"> Win 64-bit system 2GB of free disk space 	<p>Materialise Magics 27 is not supported on:</p> <ul style="list-style-type: none"> Windows 8.1 or earlier Windows Server Editions Virtualization systems such as VMWare
<p>Display</p> <ul style="list-style-type: none"> 1920 x 1080 resolution or higher 32-bit color depth (True color) 4K monitors are not actively supported 	<p>Materialise Magics does not run natively on Mac OS X, Linux, or any other operating system not listed above.</p>
<p>Video Card</p> <ul style="list-style-type: none"> NVIDIA GeForce GTX 1060' or AMD Radeon RX 480 or better DirectX 11 compatible video card At least 4 GB of memory At least a memory interface width of 192-bit (256-bit is recommended) 	<p>.NET 4.6 or later or a working internet connection during the installation is required.</p>

* These hardware requirements are considered minimal for professional usage, but depending on the expected use cases (mainly influenced by project size, amount of triangles and number of parts) it is recommended to invest in appropriate hardware (more memory, larger disk size, ...). More info can also be found on: <https://help.materialise.com/93151-tips-and-tricks/magics:-performance>

** Materialise Software will discontinue supporting an operating system, or a specific version of an operating system, from the moment that the OS vendor discontinues support.

6 Contact Information

For more information, check out our website: materialise.com/software/magics/

For technical support, please check <http://help.materialise.com/> or contact one of our Customer Support teams:

Europe (Headquarters)

Technologielaan 15
3001 Leuven
Belgium

Phone +32 16 39 66 11
software.support@materialise.be

United Kingdom

AMP Technology Centre
Advanced Manufacturing Park
Brunel Way, Catcliffe
Sheffield, S60 5WG

Phone +44 1143 997 845
software.support@materialise.co.uk

China

Baoshan District
Hutai Road 2999
1F Building no 1
Shanghai 200444
P.R.China

Phone +86 21 583 124 06
software.support@materialise.com.cn

Asia – Pacific

Unit 5-01, Menara OBYU
No. 4, Jalan PJU 8/8A, Damansara
Perdana
47820 Petaling Jaya
Selangor Darul Ehsan - Malaysia

Phone: +603 7724 1415
software.support@materialise.com.my

USA & Canada

44650 Helm Court
Plymouth, MI 48170
USA

Phone: +1 734 259 6445
Phone (toll-free): +1 888 662 5057
software.support@materialise.com

Germany

Friedrichshafener Str. 3
82205 Gilching
Germany

Phone: + 49 8105 77 859 20
software.support@materialise.de

Japan

Yokohama Portside Bldg. 2F
Sakae-cho 8-1
Kanagawa-ku, Yokohama

Phone +81 45 440 4591
support@materialise.co.jp