



materialise

innovators you can count on

Materialise Magics Automation Module v1.3

User Manual

September 2023

Copyright Information

Materialise, the Materialise logo, Magics, Streamics and 3-matic are trademarks of Materialise NV in the EU, US and/or other countries.

Microsoft and Windows are either registered trademarks or trademarks of Microsoft Corporation in the United States and/or other countries.

© 2023 Materialise NV. All rights reserved.



Table of Contents

1	Installation and Licensing	4
1.1.	Minimum System Requirements.....	4
1.2.	How to download the Automation Module?	4
1.3.	How to Install the Automation Module	5
1.4.	Licensing.....	6
2	Getting Started	9
2.1.	Automation Module Features	9
2.2.	How to Add a Workflow Package	9
2.3.	How to select and execute a Script	11
	Automation Module Usage	13
2.4.	Automation Module Toolbar	13
2.5.	Removing Scripts.....	13
2.6.	Profile Management	15
2.6.1	Add a profile.....	15
2.6.2	Remove Profile.....	16
3	Contact and Technical Support	17

1 Installation and Licensing

The Automation Module is installed like standalone software. However, licensing must be done through Materialise Magics.

1.1. Minimum System Requirements

The Automation Module is a Materialise Magics plug-in. To use it, you must have either Magics RP in version 25.03 or higher or Magics Print in version 25.2 or higher installed. Please refer to the Magics user manual for further system requirements.

1.2. How to download the Automation Module?

Note: Before you start, make sure you have a valid CCKey. The CCKey is the unique code that specifies your Materialise software license. The CCKey is needed to activate your license, but also for future downloads, upgrades, and other occasions. The format of the CCKey is xxxx-xxxx-xxxx-xxxx.

Go to the passwords website (<https://passwords.materialise.com/>), enter your CCKey or voucher code in the applicable field and click Submit.

Licensed Software Solutions

If you want to generate passwords for your Materialise software or update your software by downloading the latest version, you can do this by entering your CCKey⁽¹⁾ or voucher code⁽²⁾ below. Your CCKey code can be found on the Certificate of Authenticity you received with your software.

Enter your CCKey/ voucher code:

1) your CCKey is a unique 16-character-long code linked to your Materialise Software license. This code can be found on the Certificate of Authenticity sent with each licensed copy of Materialise software.

2) A voucher is also a unique 16-character-long code distributed by Materialise or one of our trusted partners. A voucher code allows you to generate a (temporary) license for a pre-determined Materialise licensed software.

After logging in, you will get an overview of the license and the software modules linked to it. Navigate to the download section by using the overhead navigation bar.

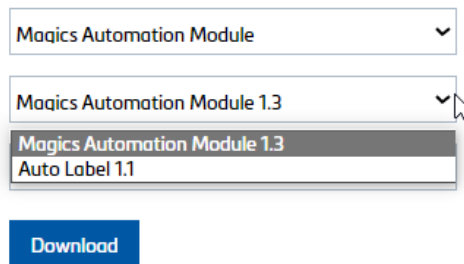
View personal details License details Downloads

License details

CCK: 1234-ABCD-1A2B-Z9Y8

Current system ID:	Current version: 18.0	Platform: x64
--------------------	-----------------------	---------------

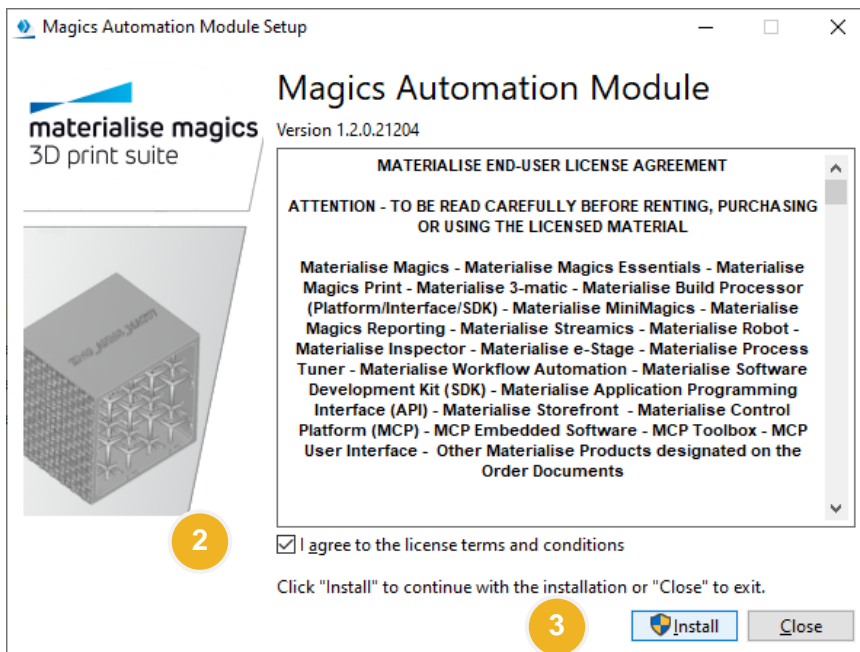
On the download page, select the product category “Magics Automation Module” and the software version you want to download from using the dropdown boxes. After clicking Download, your download will start immediately.



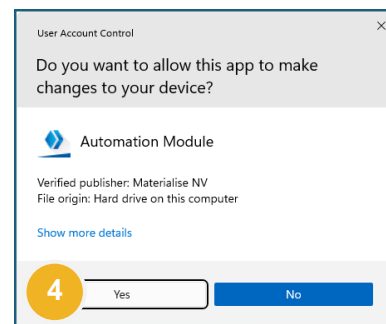
1.3. How to Install the Automation Module

For installing the Automation Module, you need to have admin rights, as the plug-in framework needs to be installed for Magics.

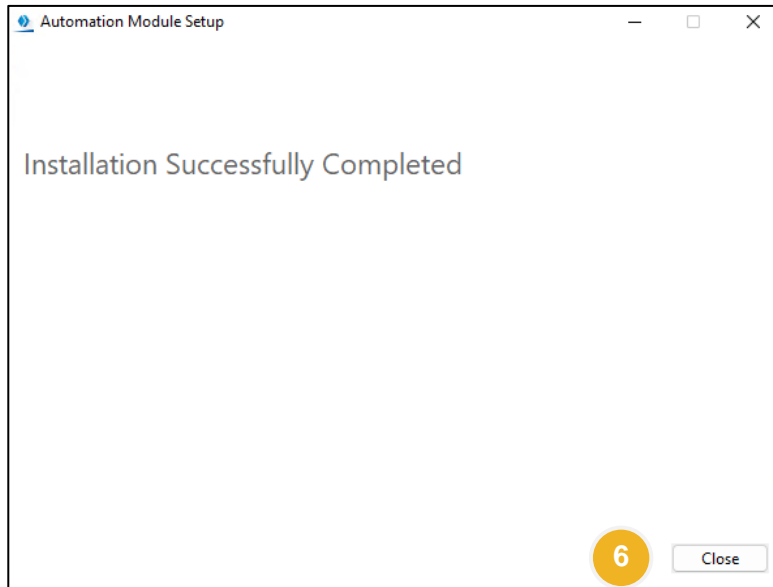
1. Open the installer bundle **Automation_Module_Setup_1.3.0.24901_x64.exe**.



2. Read the license terms and conditions carefully and accept them by activating the **checkbox**.
3. Click **Install**.
4. Click **Yes** to allow changes to your computer.



5. Wait for the installer to finish.
6. Click **close**.

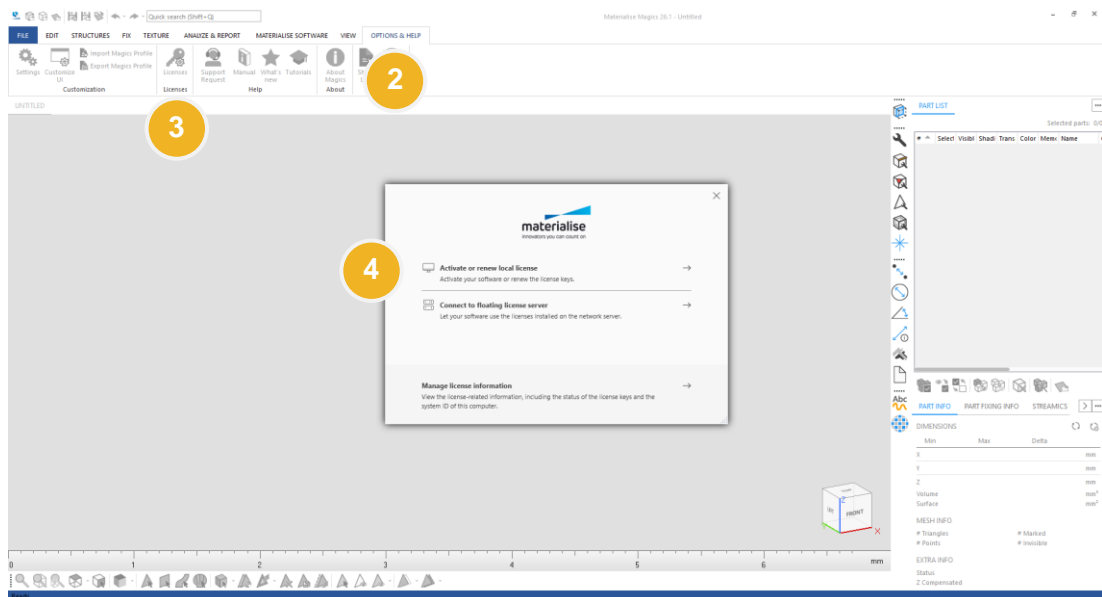


1.4. Licensing

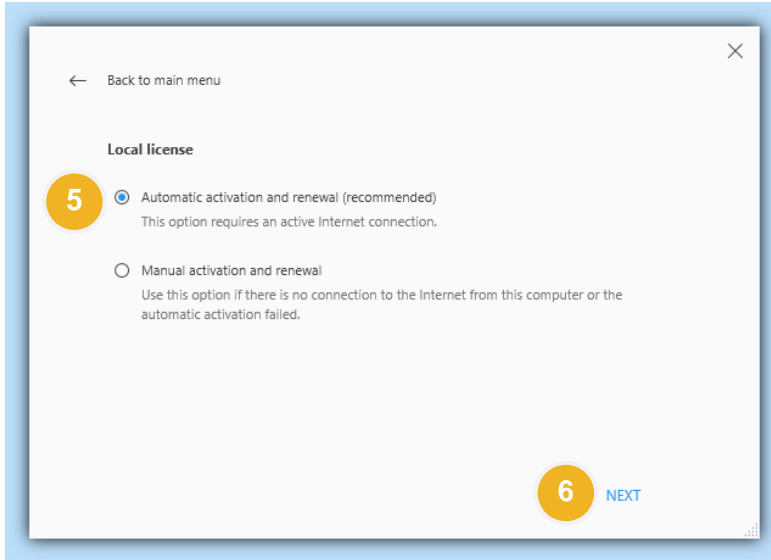
The Automation Module must be activated with an appropriate license. If you encounter any issues with your license, please contact your local Materialise Customer Support branch. There are separate methods for activating local licenses and floating licenses.

For local licenses:

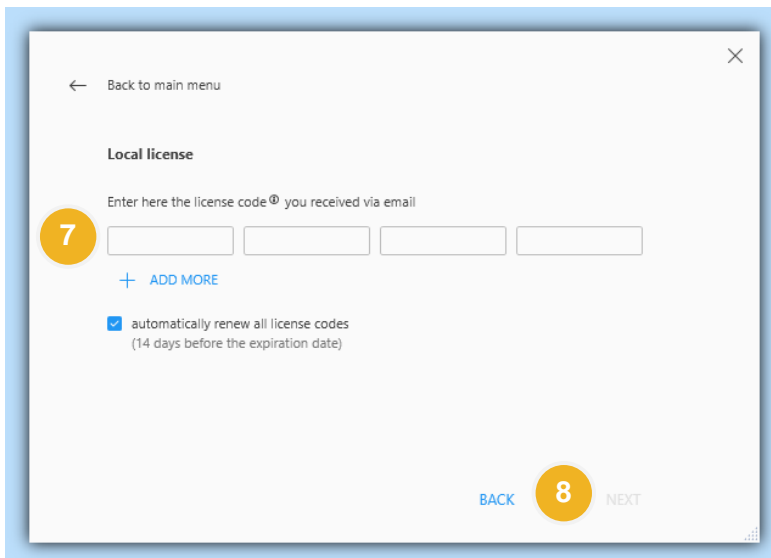
1. Open Magics.
2. Browse to the ribbon **Options & Help**.
3. Click **Licenses**.
4. Click **Activate or renew local license**.



5. Select **Automatic activation and renewal**.



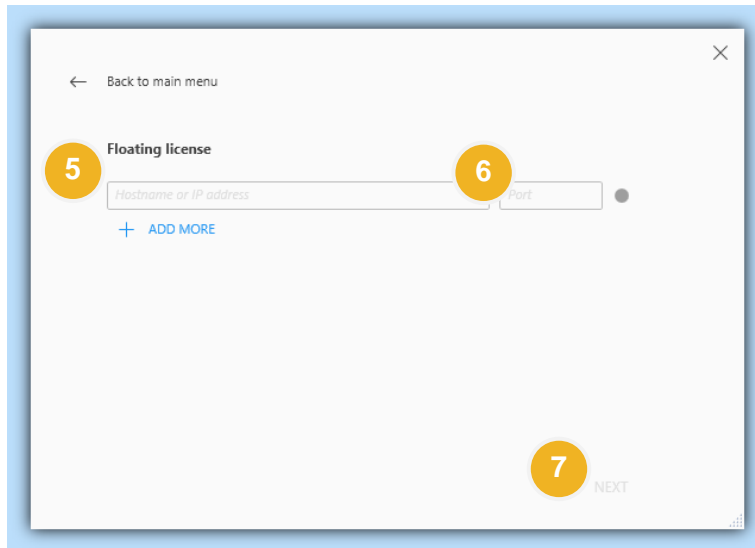
6. Click **NEXT**.
7. Enter your license code.



8. Click **NEXT**.
9. Click **FINISH**.

For floating licenses:

1. Open Magics.
2. Browse to the ribbon **Options & Help**.
3. Click **Licenses**.
4. Click **Connect to floating license server**.



5. Enter your floating license server's address.
6. Enter the port.
7. Click **NEXT**.
8. Click **FINISH**.

2 Getting Started

The Magics Automation Module is a software for executing operations to automate data preparation tasks for 3D printing.

2.1. Automation Module Features

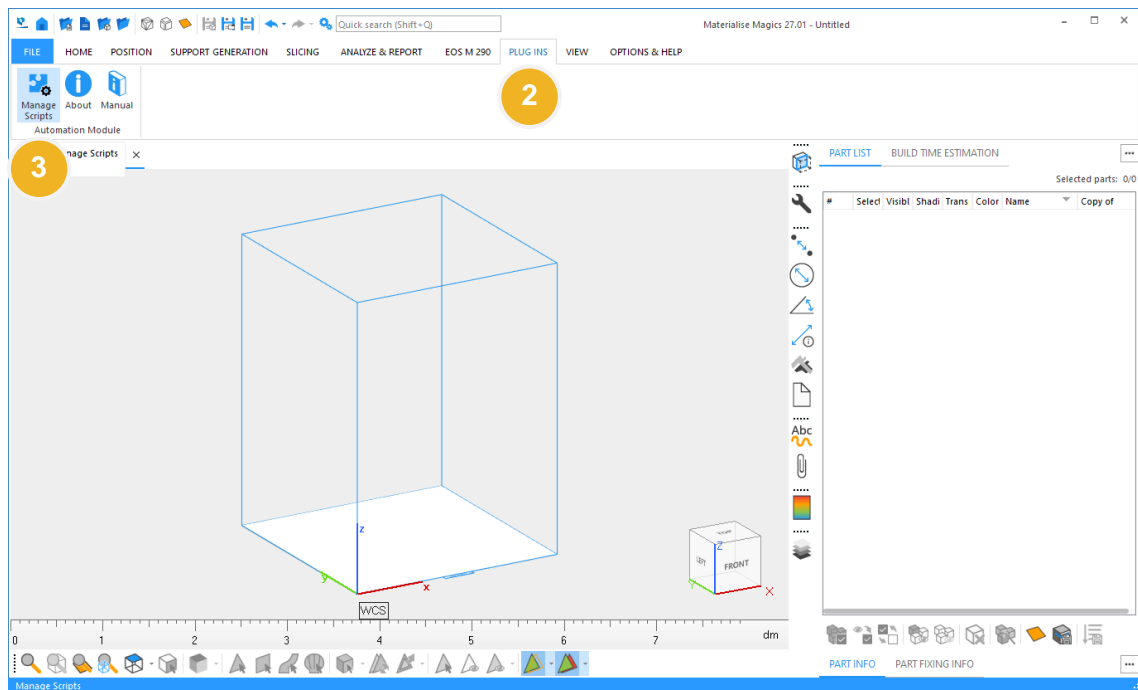
Version 1.3.0.24901 has the following features:

- The installer bundle installs the Magics plug-in framework and the Automation Module itself.
- The management of scripts includes importing of workflow packages (incl. script, parameter profiles and required dependencies/packages or modules), removal of scripts, enabling/disabling and filtering of scripts.
- Selection and execution of (recent and favorite) scripts.
- Editing of published script parameters.
- Editing and creating profiles to adjust results to user specifications.

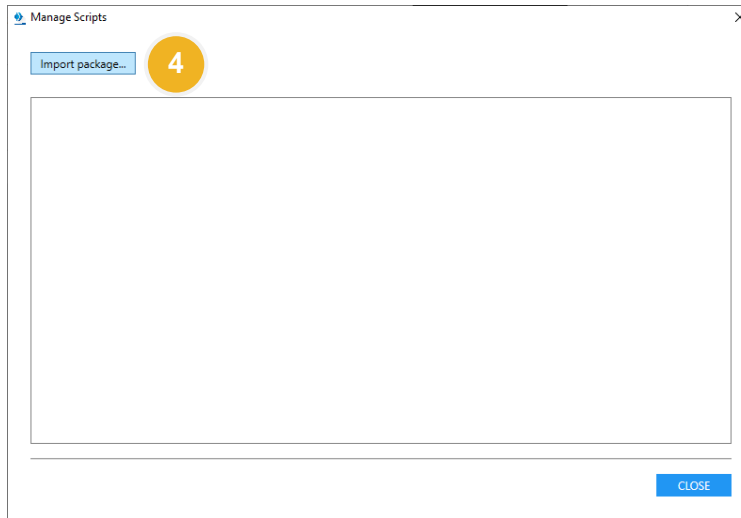
2.2. How to Add a Workflow Package

Before executing any operation, it is necessary to import these to the Automation Module.

1. Open **Magics**.
2. Browse to the ribbon **Plug Ins**.
3. Click **Manage Scripts**.

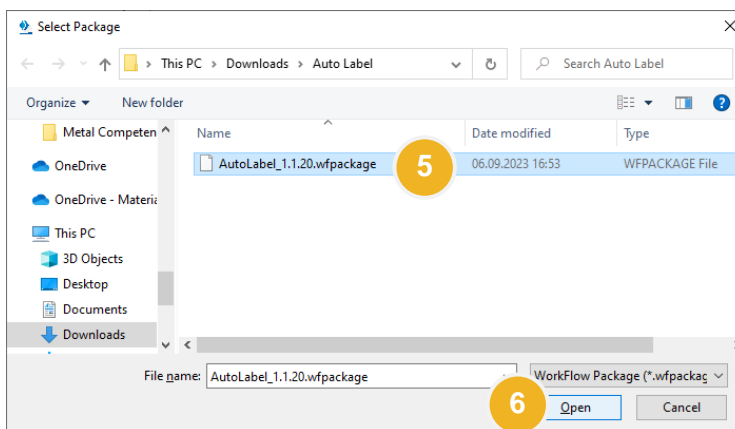


4. Click **Import package...**



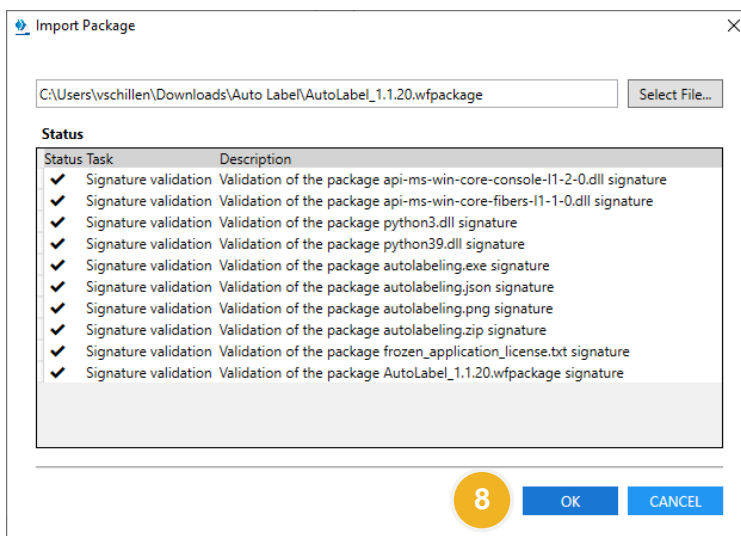
5. Select the <name>.wfpkg file from windows file dialog

6. Click **Open**



7. Wait until the import is complete.

8. Click **OK**.

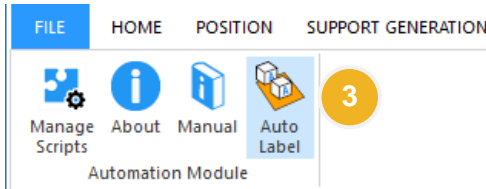


9. Back in the window "Manage Scripts" press **CLOSE**.

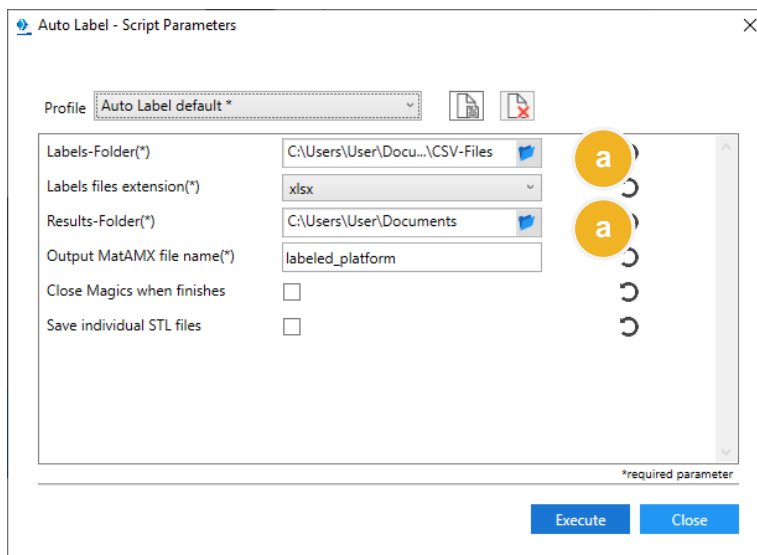
2.3. How to select and execute a Script

There are several ways to select and execute a script.

1. Open **Magics**, if not already done.
2. Browse to the ribbon **Plug Ins**.
3. Click on the **Icon** of the desired script you want to execute.

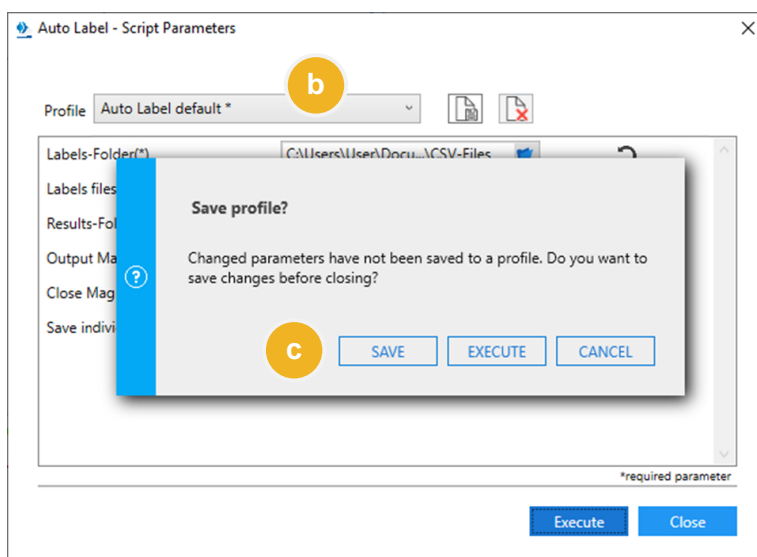


4. **Edit Parameters** if necessary (may be the case for the first time).
 - a. Set the values for all required parameters (e.g., folder path to be set).

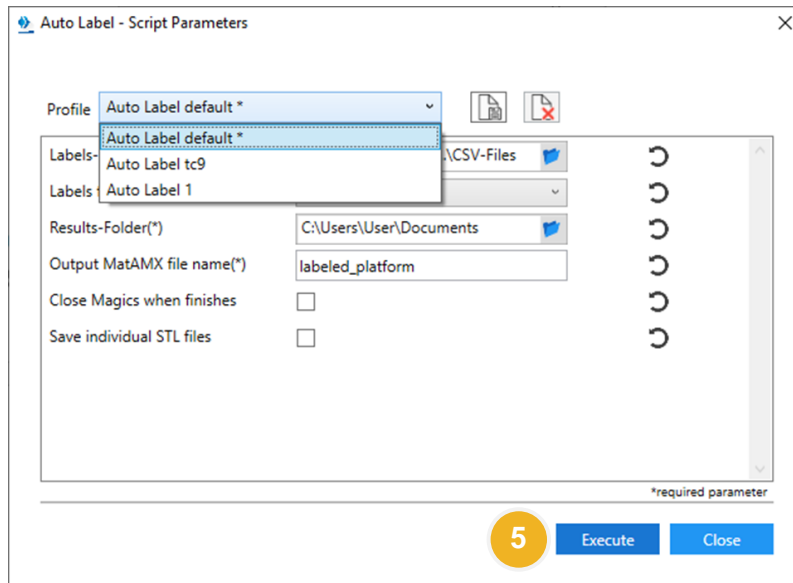


Note: To reset individual parameters to the last saved state click on the circular arrow icon beneath the input field.

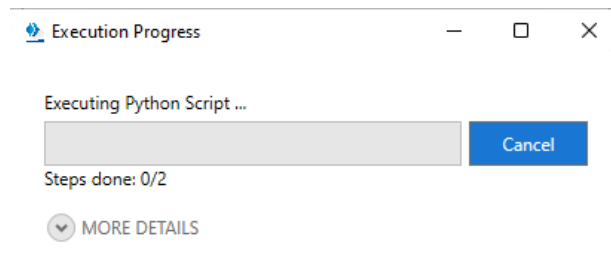
- b. Save the parameters in a (new) profile, if desired.



- c. Click **SAVE** to save the new profile or to overwrite the existing one.
- d. All saved profiles can be used for executing the selected script.



5. Click **Execute**.
6. Wait for the script to be completed.



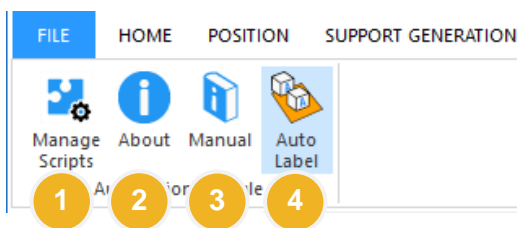
7. Close all Automation Module windows.

Automation Module Usage

2.4. Automation Module Toolbar


Magics Plug Ins tool bar / ribbon is the starting point for Automation Module. The tool bar has the following options:

1. Click on **Manage Scripts** for adding, removing, en-/disabling or assigning scripts as favorite.
2. Click on **About** to see version details of this module.
3. Click on **Manual** to open the User Manual of this module.
4. Click on “**Script Name**” to directly run the corresponding script.



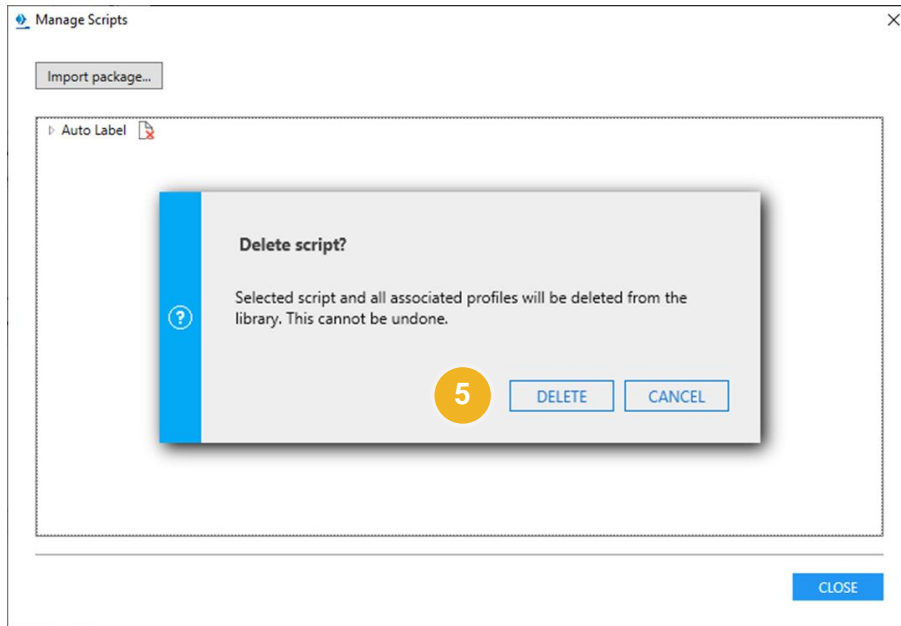
2.5. Removing Scripts

If desired, it is possible to remove a script from the Automation Module, e. g. before importing an updated version of the script.

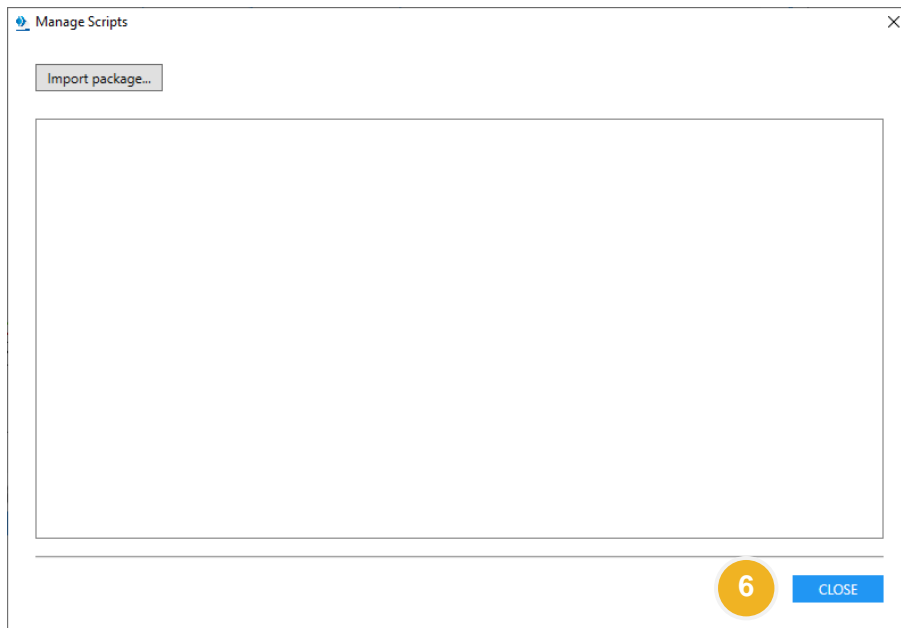
1. Open **Magics**.
2. Browse to the ribbon **Plug Ins**.
3. Click **Manage Scripts**.
4. **Click** on the icon  right next to the script name to delete the script.



5. Confirm the **Delete script?** Dialogue.



6. **Close** the window.



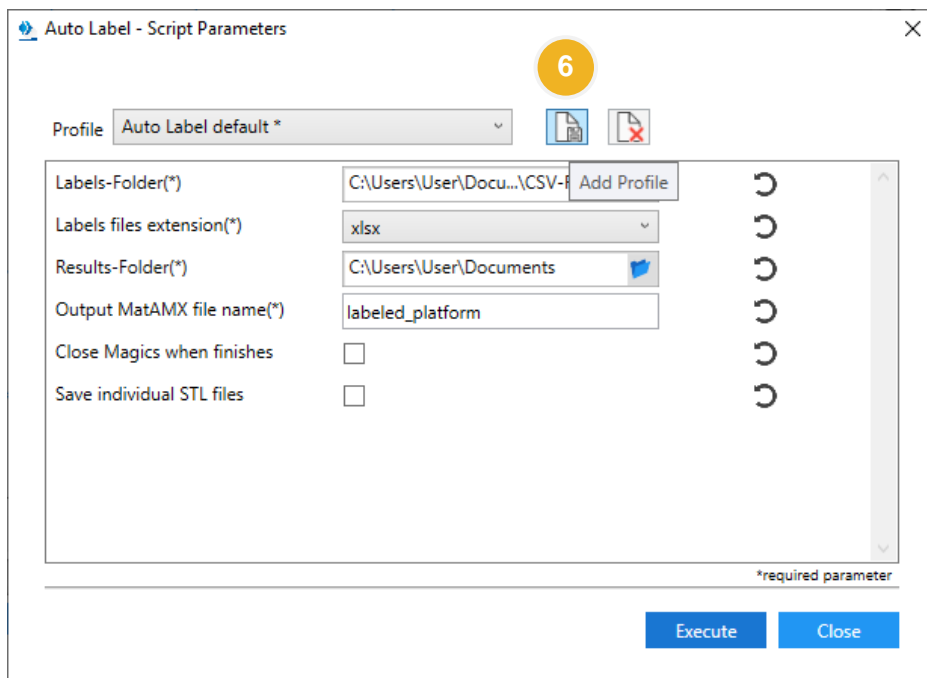
2.6. Profile Management

You can set different profiles for executing scripts with a defined set of parameters. A default profile will be created during script import.

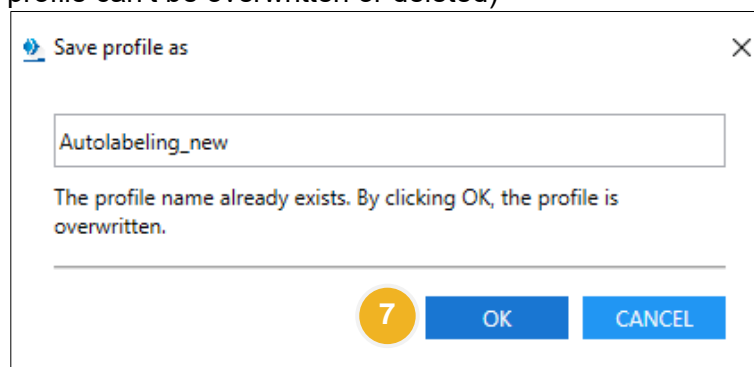
1. Open **Magics**.
2. Browse to the ribbon **Plug Ins**.
3. Click **Select and Execute Script**.
4. Click **Edit Parameters**.

2.6.1 Add a profile

5. Set a new value to the desired parameters. The profile will be indicated with a * (asterisk) that changes happened.
6. Click on **Add Profile** button

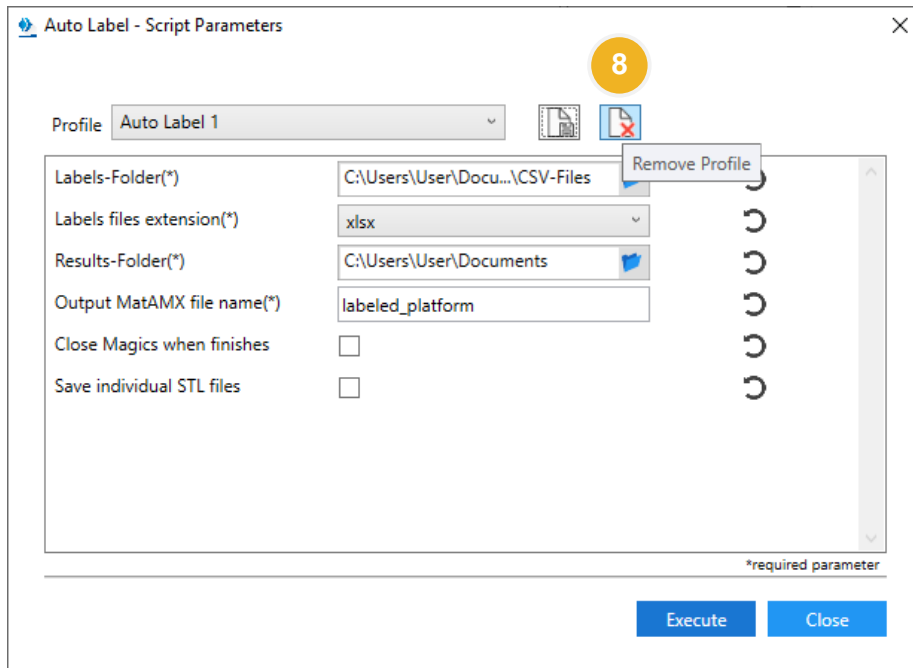


7. Save the profile with a new name or overwrite the selected one (Note: the default profile can't be overwritten or deleted)

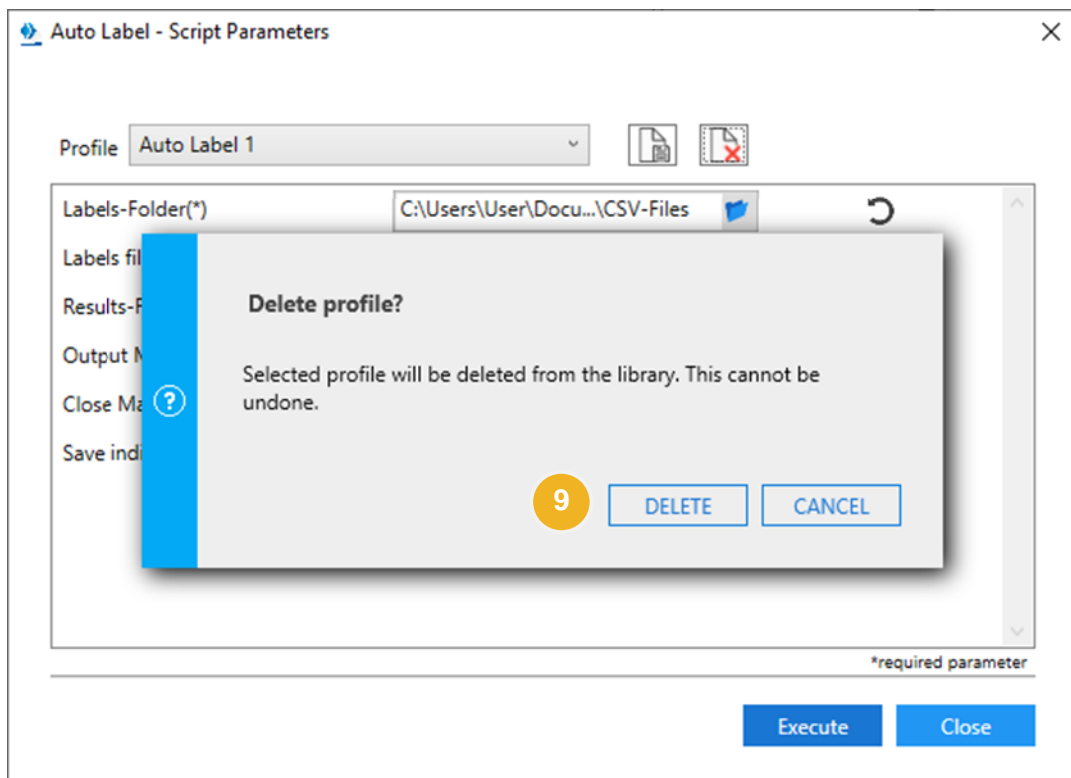


2.6.2 Remove Profile

8. Click on **Remove Profile** button



9. Confirm the **Delete profile** dialog to **Delete** or **Cancel**



3 Contact and Technical Support

We want you to have a smooth user experience when working with the Materialise Magics Automation Module. If you do encounter any error, please always try to save your work, and restart your system first.

In urgent cases you can contact our Technical Support for Maintenance Customers via e-mail.

Contact e-mails:

Worldwide: software.support@materialise.be

Korea: software.support@materialise.co.kr

USA: software.support@materialise.com

Germany: software.support@materialise.de

UK: software.support@materialise.co.uk

Japan: support@materialise.co.jp

Asia-Pacific: software.support@materialise.com.my

China: software.support@materialise.com.cn