



## SUPPORT

# How To Program Beacons

*Beacons do not arrive pre-programmed and must be programmed by the venue.*

## 1. Get the app

**Download** the 'me&u Tags' app on your mobile device by clicking the link or scanning the QR code below.



[Apple Store](#)



[Google Play](#)



## 2. Log in

**Log in** to the app. (You will receive an email from 'Airtable Automations' with subject: *me&u Operator Portal Details*). **Click** 'Press here to start'

## 3. Determine your beacon type

**Tap** the beacon to identify whether an NFC chip is present.

If a pop up doesn't appear with "me&u NFC Tag" (see right), this suggests your beacon is QR code only.

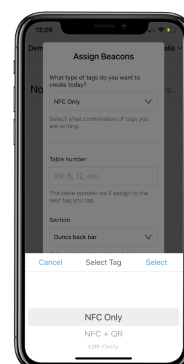


## 4. Choose what to program

**Steps for QR Code:** Select QR drop-down then proceed to Step 5.

**Steps for NFC:** Select NFC + QR drop-down then proceed to Step 5.

*Note. NFC is the technology inside the beacon, allowing your customers to access your menu with just a tap. NFC is not included in beacons produced after November 2022.*





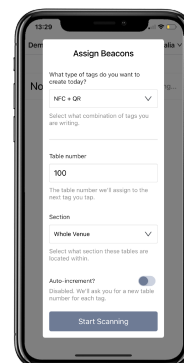
## 5. Set table number & section

---

Type in what **table number** you would like the beacon/QR code to be assigned to.

If applicable - **select** what **section** the beacon should be programmed to. This will affect the food/drink selections e.g. smoking area, courthouse, rooftop.

**Note.** If you need a new section added, please contact me&u.



## 5. Start scanning

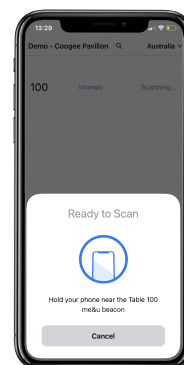
---

**Click** 'Start Scanning' then you'll be prompted to hold your phone near the beacon.

**NFC** - hold your phone near the beacon and then TAP.

**QR** - Scan the QR code with your camera.

**Note.** Beacons can easily be reprogrammed many times - you just have to confirm the changes from the old table & section to the new one.



## 6. Auto-increment

---

**Swipe** left to enable auto-increment feature if you are programming multiple beacons.

**Note.** Please make sure your table numbers are in chronological order when using this.

## Demo video

---

Scan the QR Code to watch our video on how to program your beacons.



## FAQs

---

### Big tables?

No problem, you can assign the same table number to multiple beacons.

### Moving a table during service?

You can either re-program the beacons to the new table number or keep them as they are.

### How can I check a table number on a beacon?

Tap or scan, go to 'Profile' in the top right-hand corner then click 'leave table XX.' This way you can also check if a beacon is programmed correctly.