

Post Office Locations - Dallas

Tap the address to see drop-off instructions and pictures for your post office location:

- [715 S Powell Pkwy, Anna, TX 75409](#)
- [1919 E Melissa Rd, Melissa, TX 75454](#)
- [3701 Altamesa Blvd, Fort Worth, TX 76133](#)
- [200 S Crowley Rd, Crowley, TX 76036](#)
- [201 Faircrest Dr, Cleburne, TX 76033](#)
- [5561 N Gate Rd, Granbury, TX 76049](#)
- [120 W 5th St, Justin, TX 76247](#)
- [1097 Schoolhouse Rd, Haslet, TX 76052](#)
- [409 Commerce St, Azle, TX 76020](#)
- [4450 Oak Park Ln, Fort Worth, TX 76109](#)
- [3020 Cherry Ln, Fort Worth, TX 76116](#)
- [9415 Benbrook Blvd S, Benbrook, TX 76126](#)
- [301 N Las Vegas Trl, Fort Worth, TX 76108](#)

Post Office Locations - Dallas

715 S Powell Pkwy, Anna, TX 75409

Enter the gated employee entrance at the back of the post office off of S Interurban St.
Park and walk up to the loading dock.

Hand off delivery sacks to a USPS associate and sign your initials for delivery confirmation.

- If an associate isn't available, ring the doorbell at the loading dock door and wait for assistance.



Post Office Locations - Dallas

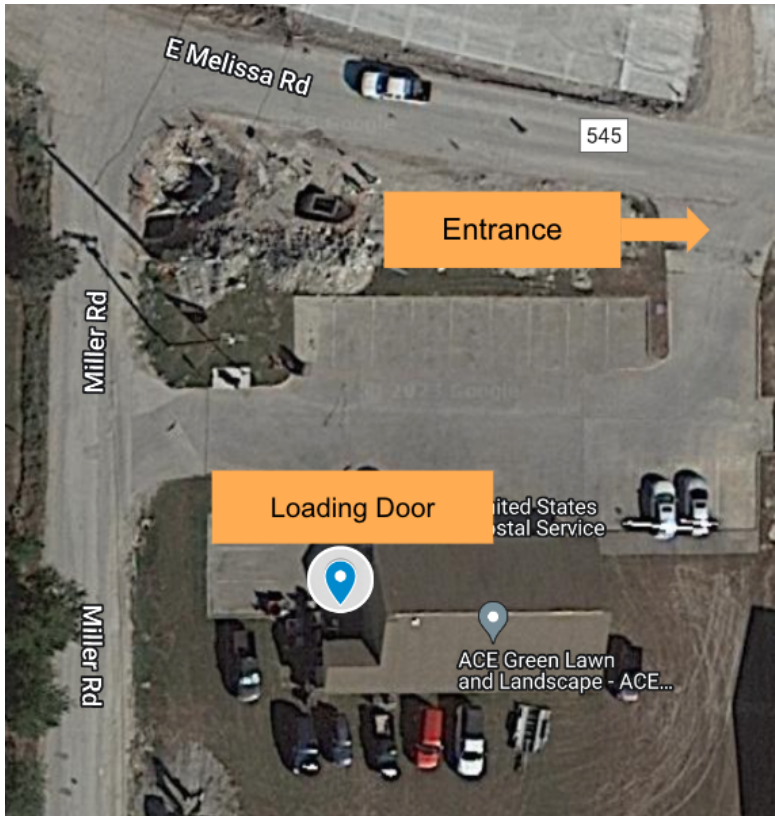
1919 E Melissa Rd, Melissa, TX 75454

Enter the post office and locate the loading door located to the right of the building.

Park and walk up to the loading door.

Hand off delivery sacks to a USPS associate and sign your initials for delivery confirmation.

- If an associate isn't available, ring the doorbell at the loading dock door and wait for assistance.



Post Office Locations - Dallas

3701 Altamesa Blvd, Fort Worth, TX 76133

Enter the gated employee entrance at the back left of the post office off of Vega Dr.

Park and walk up to the loading dock located towards the front right of the post office.

Hand off delivery sacks to a USPS associate and sign your initials for delivery confirmation.

- If an associate isn't available, ring the doorbell at the loading dock door and wait for assistance.



Post Office Locations - Dallas

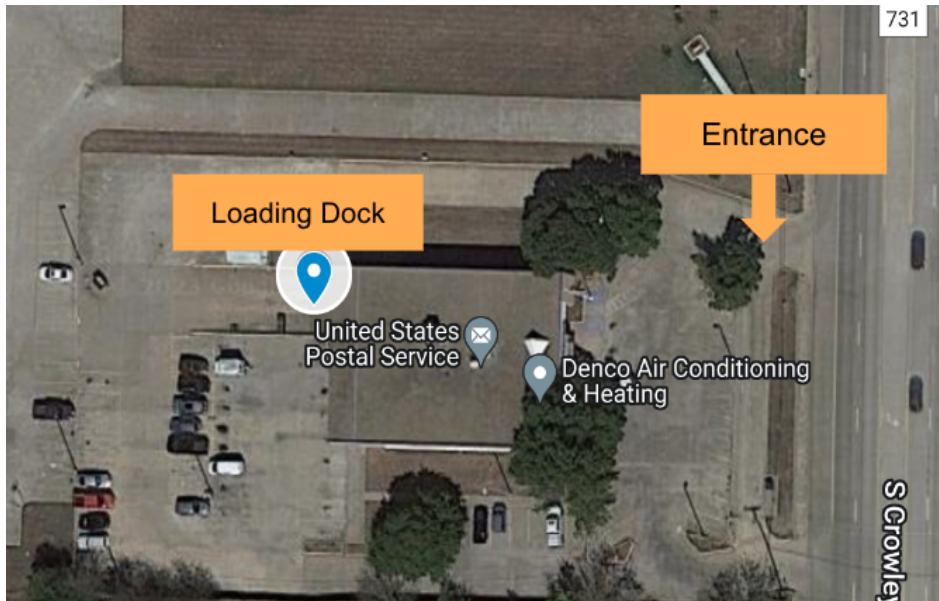
200 S Crowley Rd, Crowley, TX 76036

Enter the post office and head towards the back of the building and locate the loading dock.

Park and walk up to the loading dock.

Hand off delivery sacks to a USPS associate and sign your initials for delivery confirmation.

- If an associate isn't available, ring the doorbell at the loading dock door and wait for assistance.



Post Office Locations - Dallas

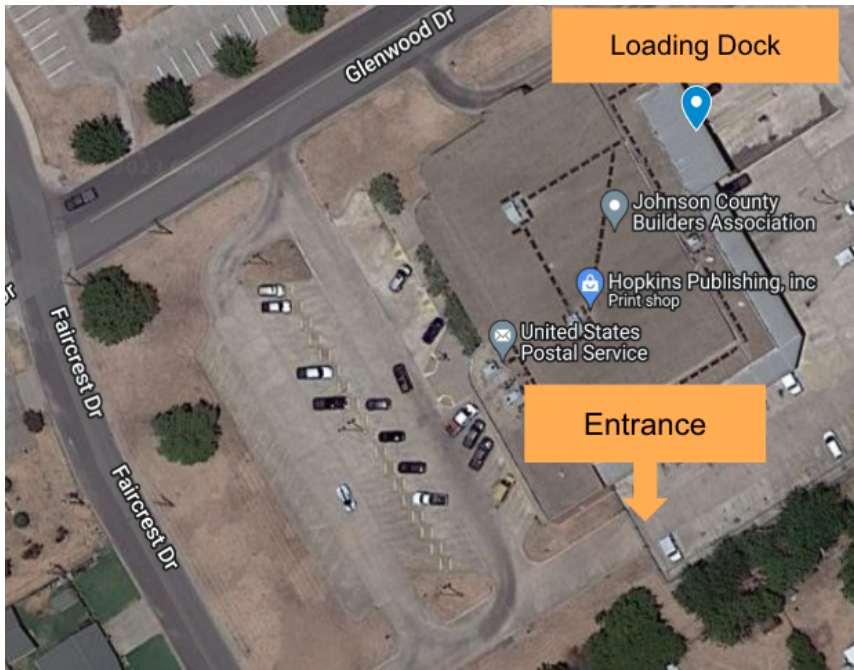
201 Faircrest Dr, Cleburne, TX 76033

Enter the gated employee entrance to the right of the post office off of Faircrest Dr.

Park and walk up to the loading dock located at the back of the building.

Hand off delivery sacks to a USPS associate and sign your initials for delivery confirmation.

- If an associate isn't available, ring the doorbell at the loading dock door and wait for assistance.



Post Office Locations - Dallas

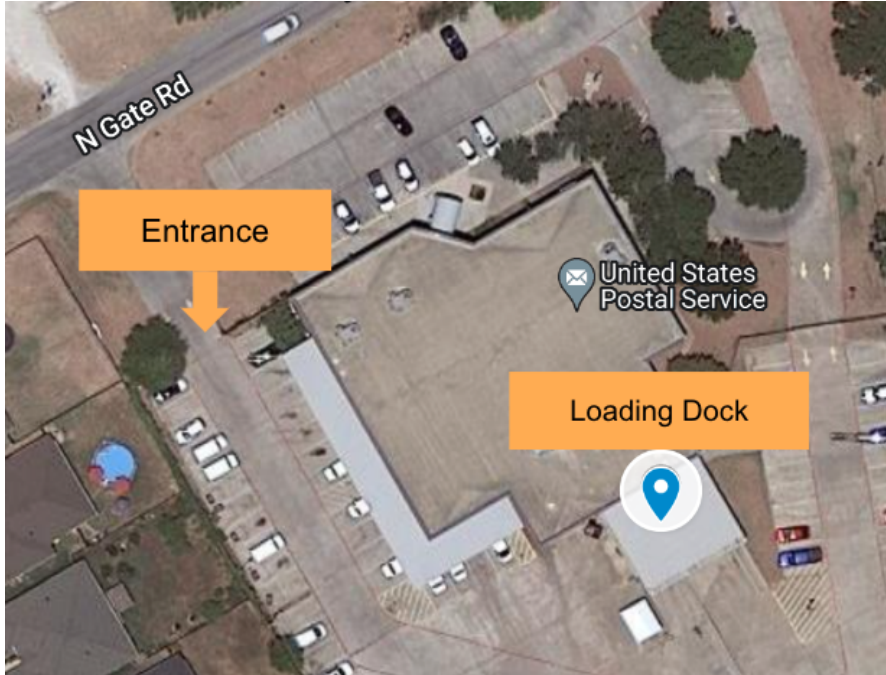
5561 N Gate Rd, Granbury, TX 76049

Enter the gated employee entrance located to the right side of the post office.

Park and walk up to the loading dock located behind the building.

Hand off delivery sacks to a USPS associate and sign your initials for delivery confirmation.

- If an associate isn't available, ring the doorbell at the loading dock door and wait for assistance.



Post Office Locations - Dallas

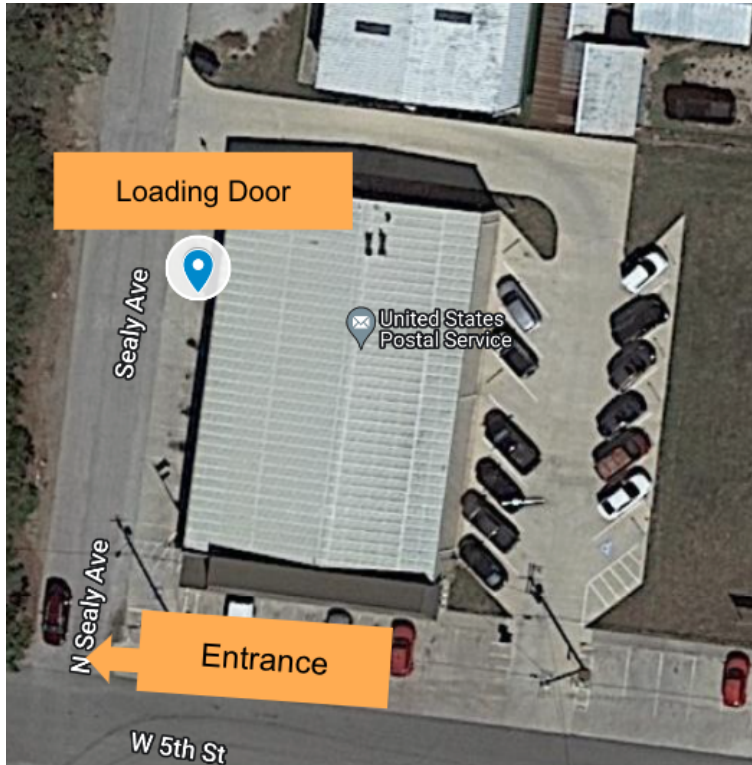
120 W 5th St, Justin, TX 76247

Turn onto N Sealy Ave to the left of the post office and locate the loading door.

Park and walk up to the loading door.

Hand off delivery sacks to a USPS associate and sign your initials for delivery confirmation.

- If an associate isn't available, ring the doorbell at the loading dock door and wait for assistance.



Post Office Locations - Dallas

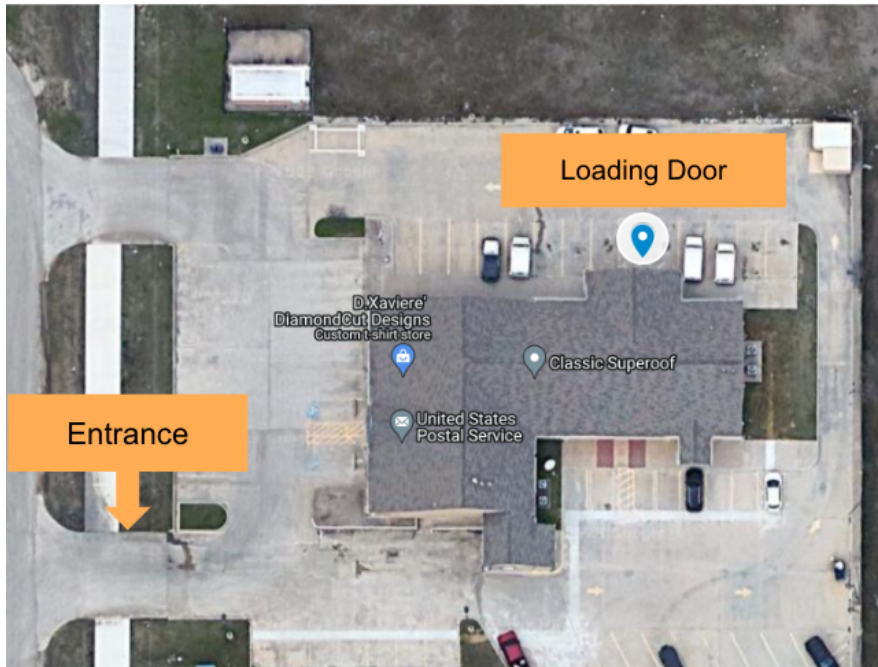
1097 Schoolhouse Rd, Haslet, TX 76052

Enter the post office and drive around until you're on the left side of the building.

Park and walk up to the loading door.

Hand off delivery sacks to a USPS associate and sign your initials for delivery confirmation.

- If an associate isn't available, ring the doorbell at the loading dock door and wait for assistance.



Post Office Locations - Dallas

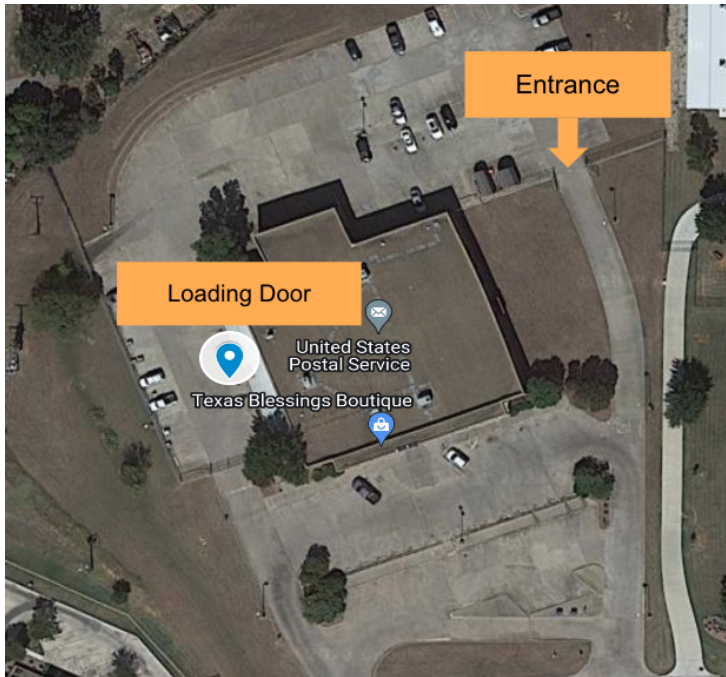
409 Commerce St, Azle, TX 76020

Enter the gated entrance and drive around the building until you locate the loading door on the left side of the post office.

Park and walk up to the loading door.

Hand off delivery sacks to a USPS associate and sign your initials for delivery confirmation.

- If an associate isn't available, ring the doorbell at the loading dock door and wait for assistance.



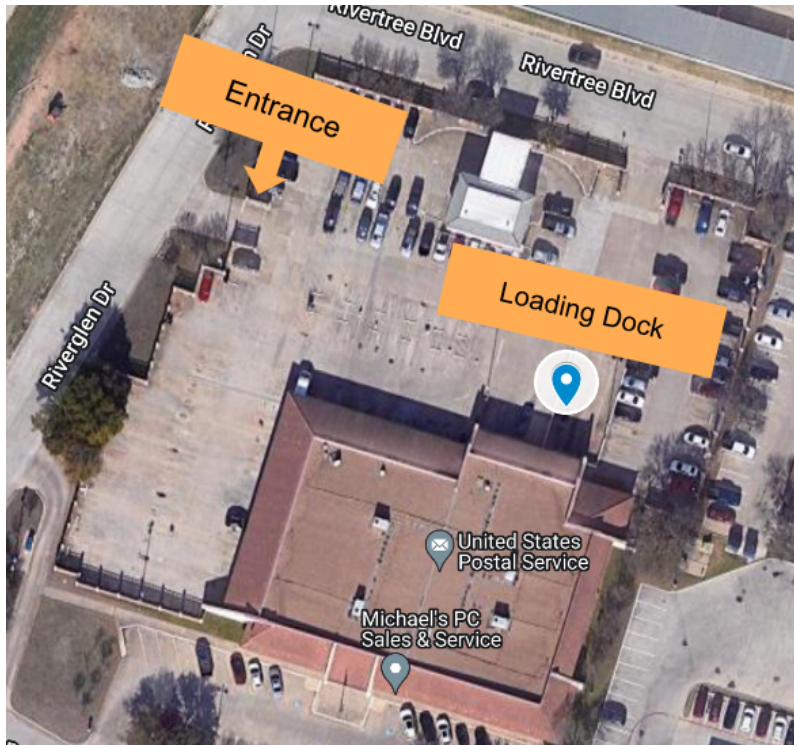
Post Office Locations - Dallas

4450 Oak Park Ln, Fort Worth, TX 76109

Enter the gated employee entrance located on the left side of the post office off of Riverglen Dr. Park and walk up to the loading dock.

Hand off delivery sacks to a USPS associate and sign your initials for delivery confirmation.

- If an associate isn't available, ring the doorbell at the loading dock door and wait for assistance.



Post Office Locations - Dallas

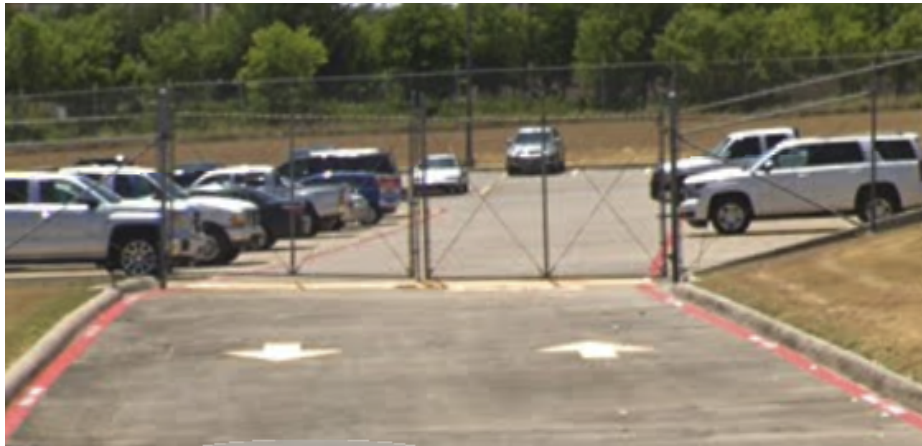
3020 Cherry Ln, Fort Worth, TX 76116

Enter the gated employee entrance, located on the right side of the post office, and locate the loading dock behind the building.

Park and walk up to the loading dock.

Hand off delivery sacks to a USPS associate and sign your initials for delivery confirmation.

- If an associate isn't available, ring the doorbell at the loading dock door and wait for assistance.



Post Office Locations - Dallas

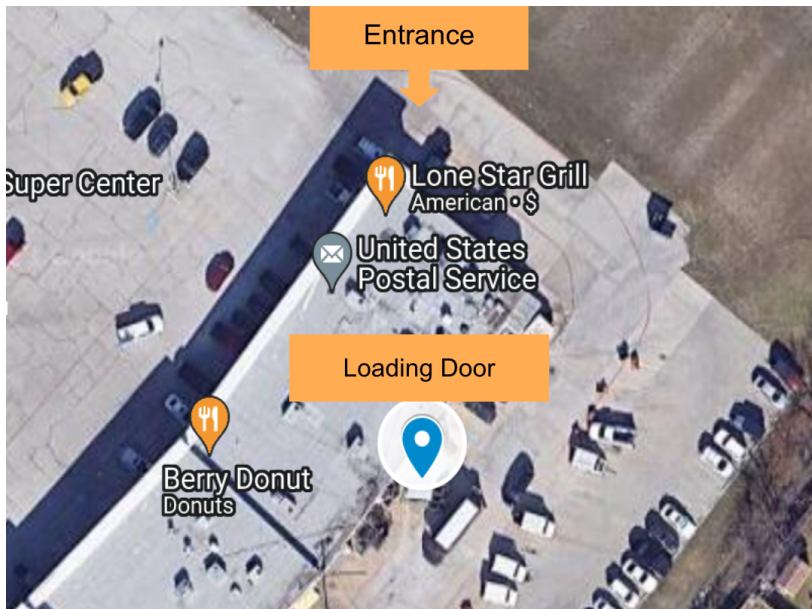
9415 Benbrook Blvd S, Benbrook, TX 76126

Head to the far left side of the Benbrook Plaza shopping center and locate the Post Office loading door behind the building.

Park and walk up to the loading door.

Hand off delivery sacks to a USPS associate and sign your initials for delivery confirmation.

- If an associate isn't available, ring the doorbell at the loading dock door and wait for assistance.



Post Office Locations - Dallas

301 N Las Vegas Trl, Fort Worth, TX 76108

Enter the gated employee entrance, on the right side of the post office, and locate the loading dock near the employee entrance.

Park and walk up to the loading dock.

Hand off delivery sacks to a USPS associate and sign your initials for delivery confirmation.

- If an associate isn't available, ring the doorbell at the loading dock door and wait for assistance.

