

# IMS Imagery Upload Procedure

**Australia | Canada | New Zealand**

## Table of Figures

Figure 1 - IMS Imagery Front Page .....	3
Figure 2 - IMS View Imagery Page .....	3
Figure 3 - IMS Flyover Upload page.....	4
Figure 4 - IMS Upload Terrain page.....	4
Figure 5 - Save Imagery to Flyover/Terrain Layer .....	5
Figure 6 - IMS Map Layers .....	6
Figure 7 - IMS Admin Tab.....	7
Figure 8 - Imagery Tile Set URL .....	7

IMS allows the adding of flyover and terrain imagery for clients to add/modify. The process to do this is as follows:

1. Navigate to the IMS imagery URL (“https://<<ims\_address>>/imagery/”)
2. Once on the imagery page you will be presented with 3 options choose the option applicable to you
  - View Imagery
  - Upload terrain
  - Upload Flyover

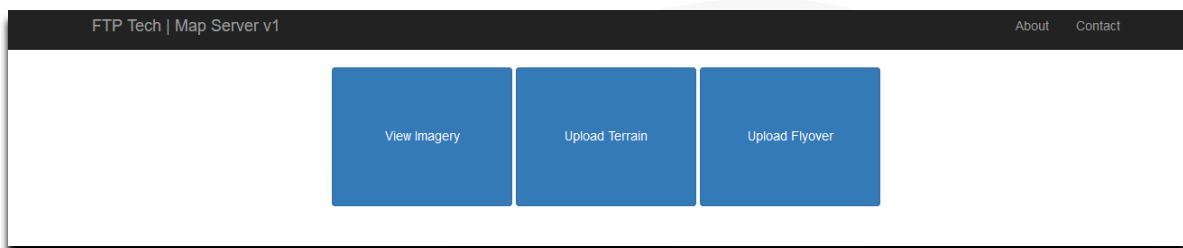


Figure 1 - IMS Imagery Front Page

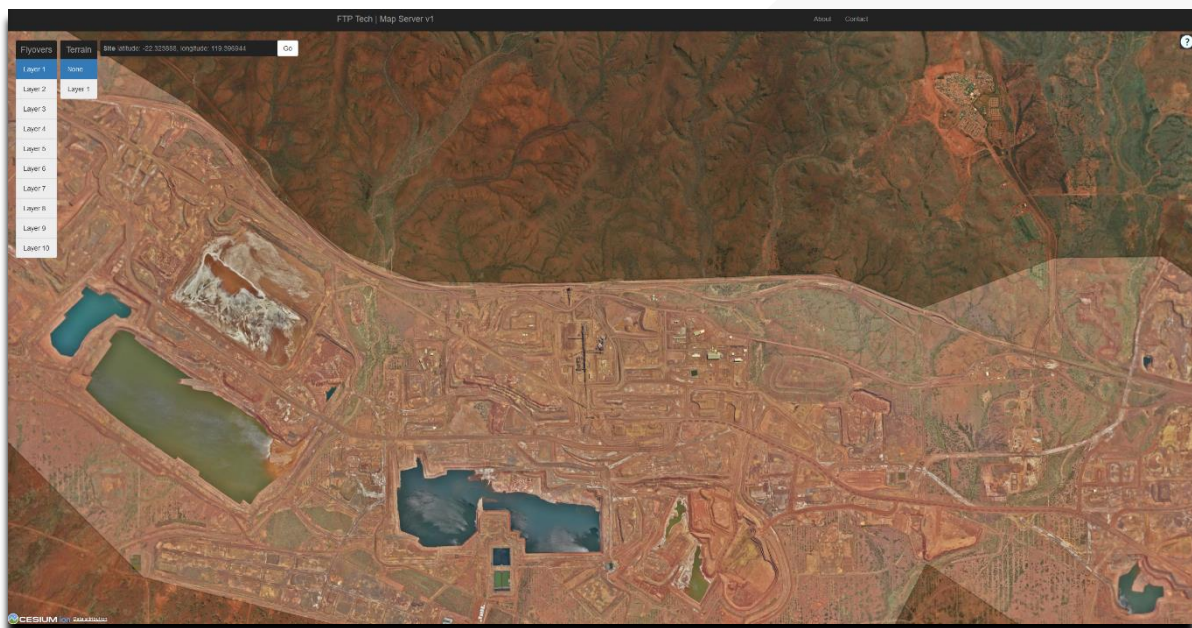


Figure 2 - IMS View Imagery Page

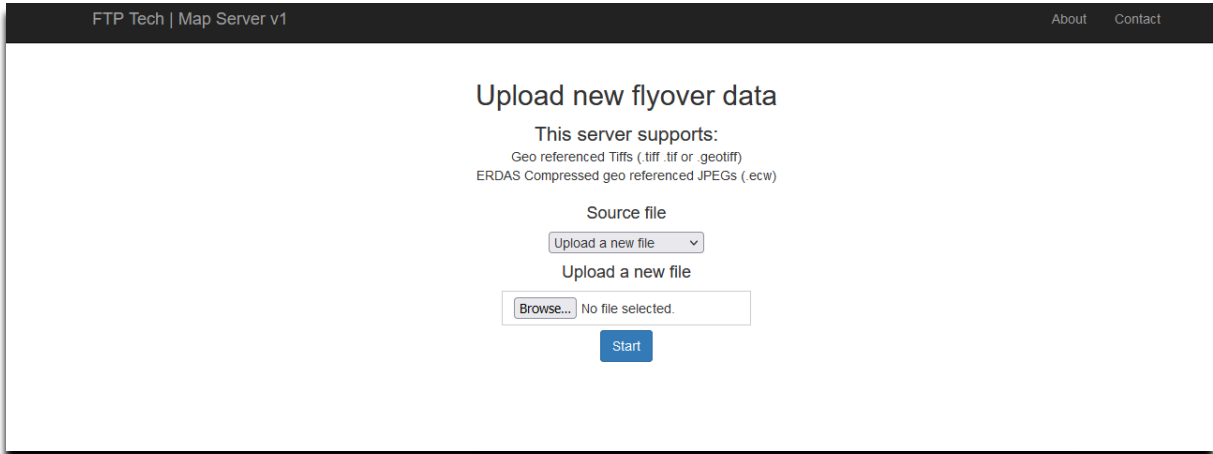


Figure 3 - IMS Flyover Upload page

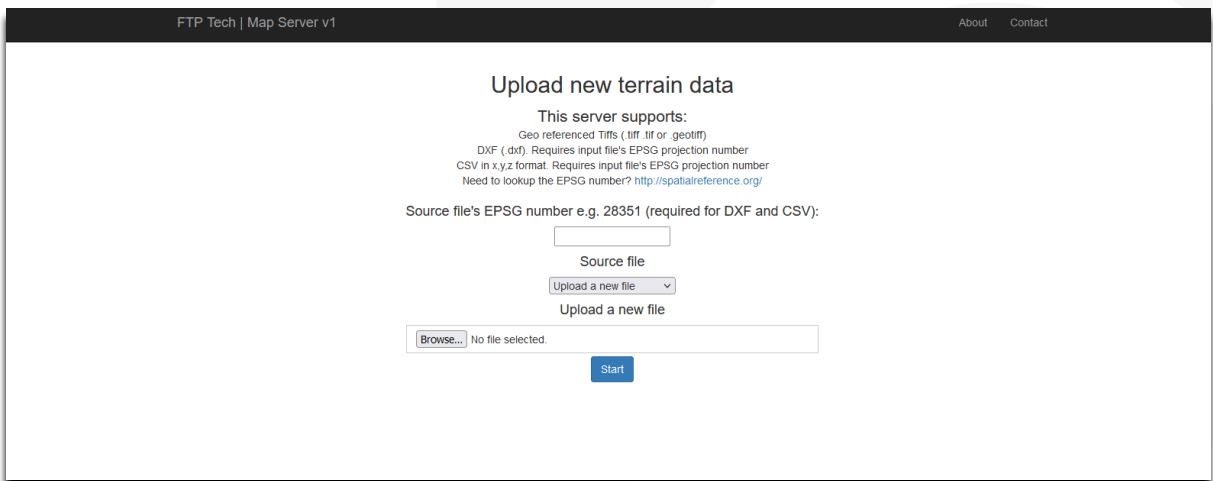


Figure 4 - IMS Upload Terrain page

3. In Terrain and Flyover upload pages there is a note there regarding the format in which you should be uploading to IMS, it's important to upload the imagery according to the format to avoid any unexpected outcome with imagery layers
4. Select the correct upload file and press start (IMS does not currently show a progress bar however once upload is complete it will take you to the imagery page to select what layer you want to save it to

- Flyovers have up to 10 layers in which you can save imagery to, Terrain however is only one layer as IMS will only read and interpret 1 layer of 3D data

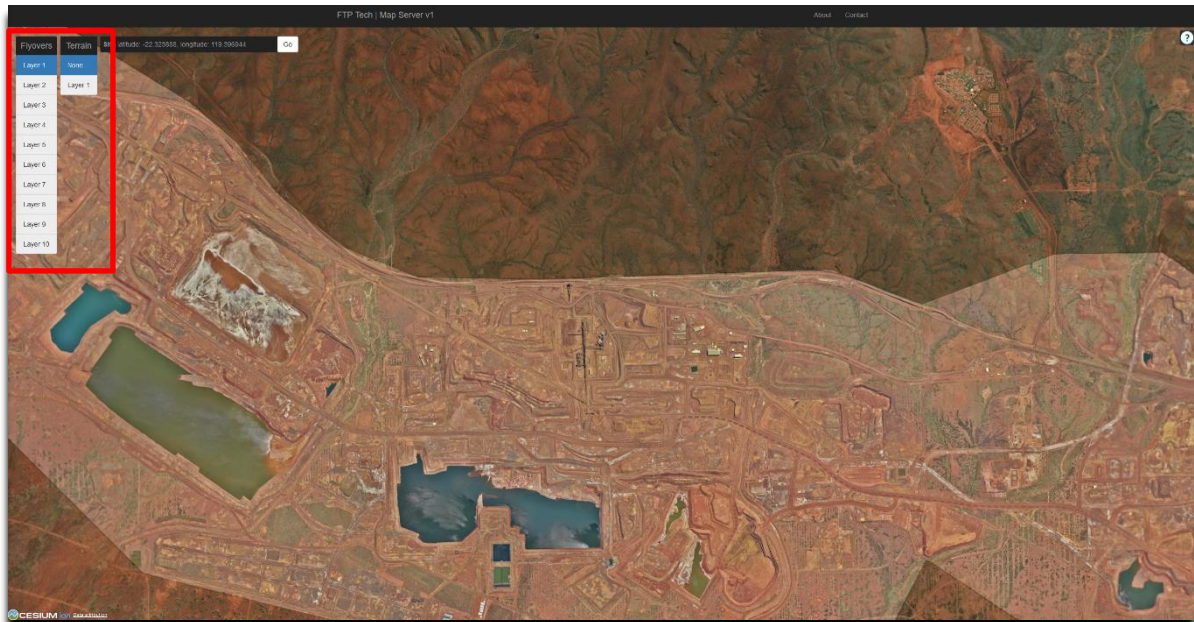


Figure 5 - Save Imagery to Flyover/Terrain Layer

- As there as many flyover layers IMS will display them in the order they are presented, however the map layers can be freely moved depending on the layer you want exposed the most. Layers can also be hidden using the eye symbol on the right-hand side of the layer

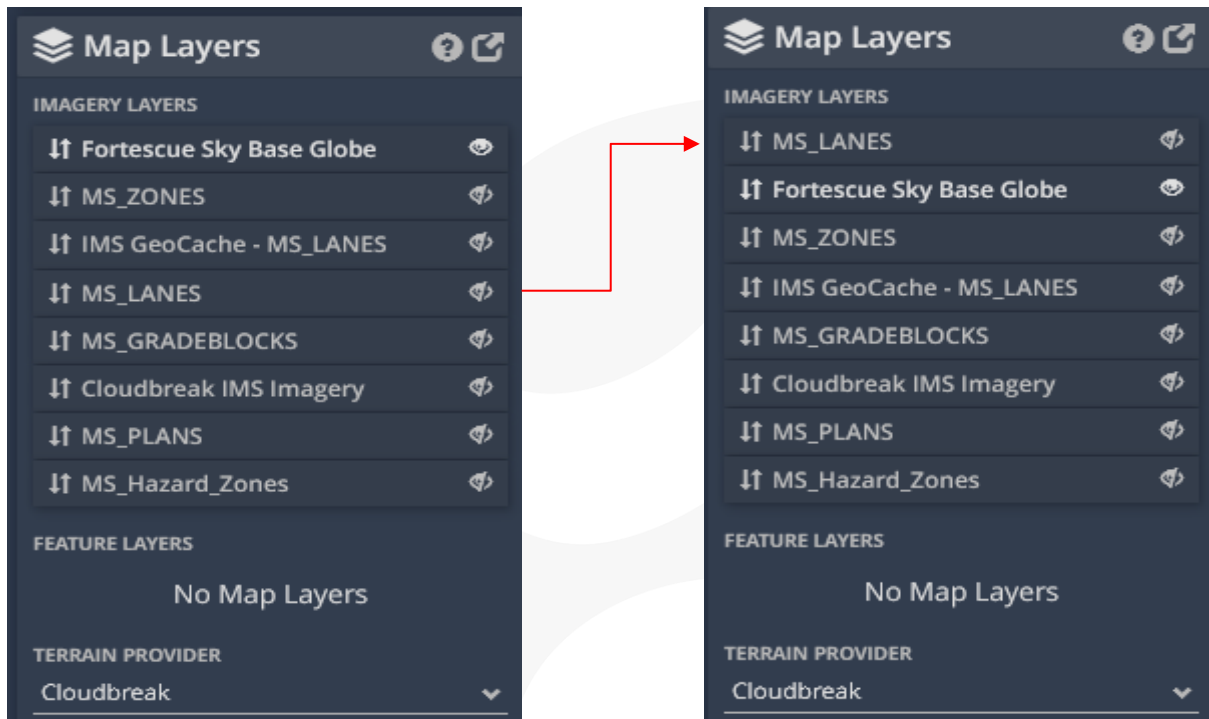


Figure 6 - IMS Map Layers

7. The admin tab within IMS will show you the general configuration of your imagery being used

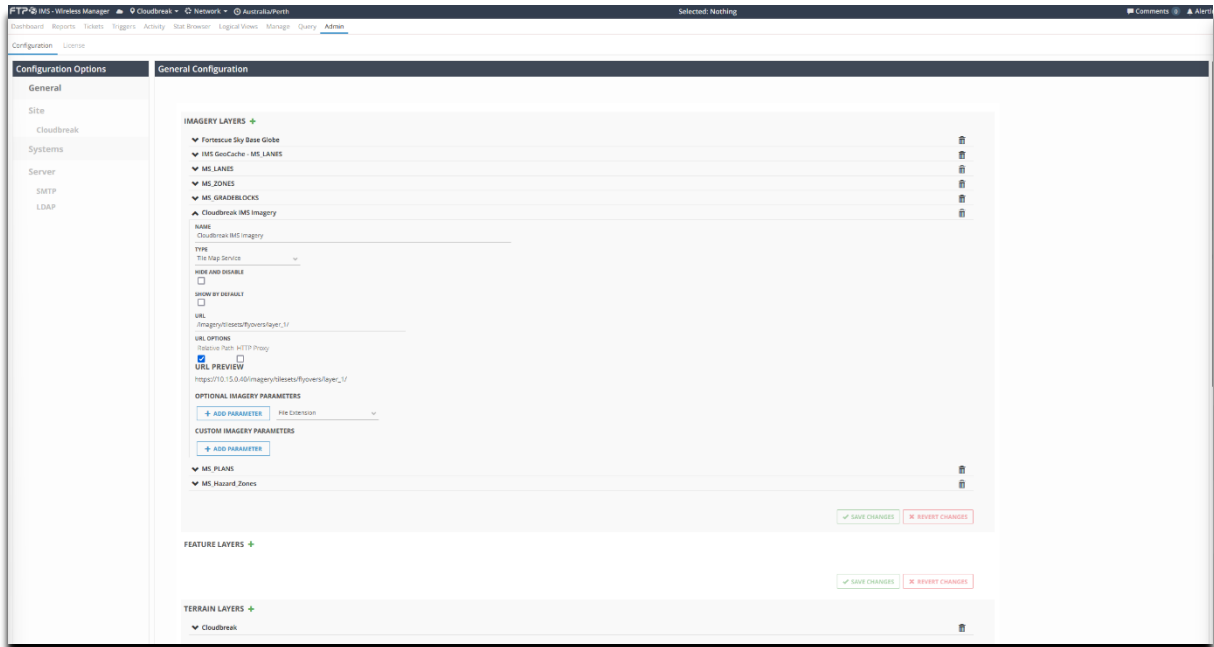


Figure 7 - IMS Admin Tab

8. Important to note that that imagery tile set must be correctly configured to be displayed on IMS otherwise you will not be able to see it within the IMS map layers side bar of IMS

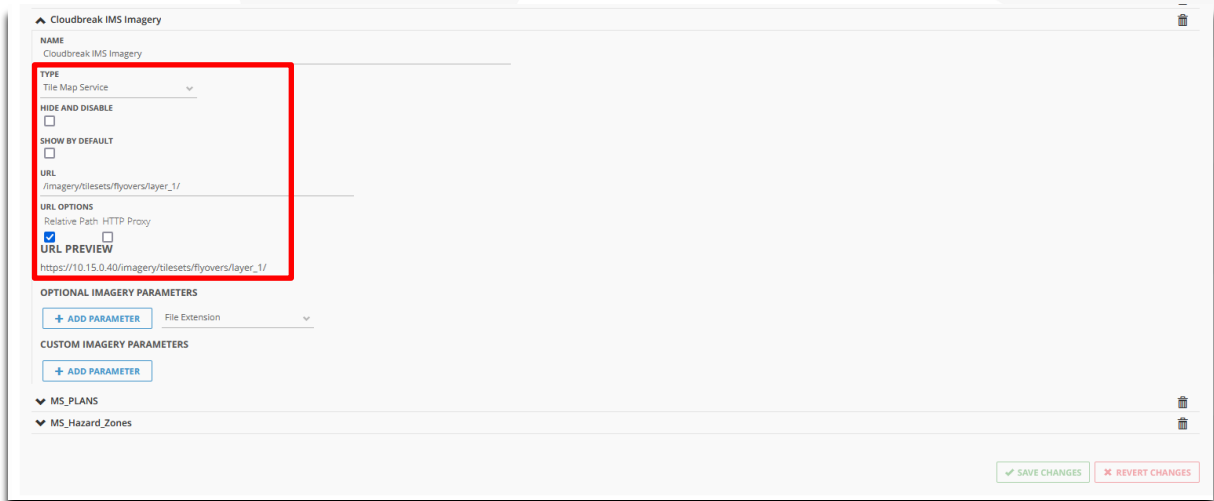


Figure 8 - Imagery Tile Set URL

The OTSC is responsible for collating and prioritising all IMS  
Wireless Manager feedback and feature requests in  
conjunction with the FTP development team. The OTSC  
welcomes any feedback or criticisms on quality or content.

Please forward all correspondence to:

OTSC

Email: [OTSCDG@ftpsolutions.com.au](mailto:OTSCDG@ftpsolutions.com.au)

Ph: 1300 490 596