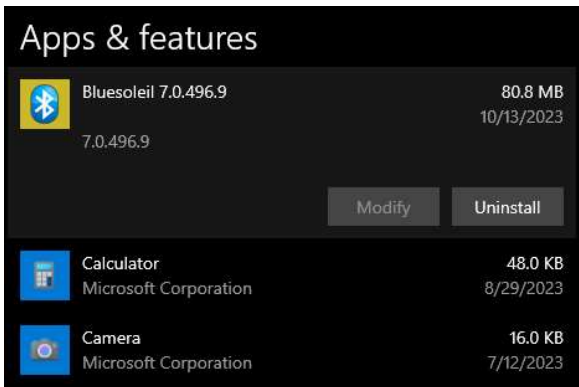


Luminex/Luminex II Windows 10 Bluetooth Setup

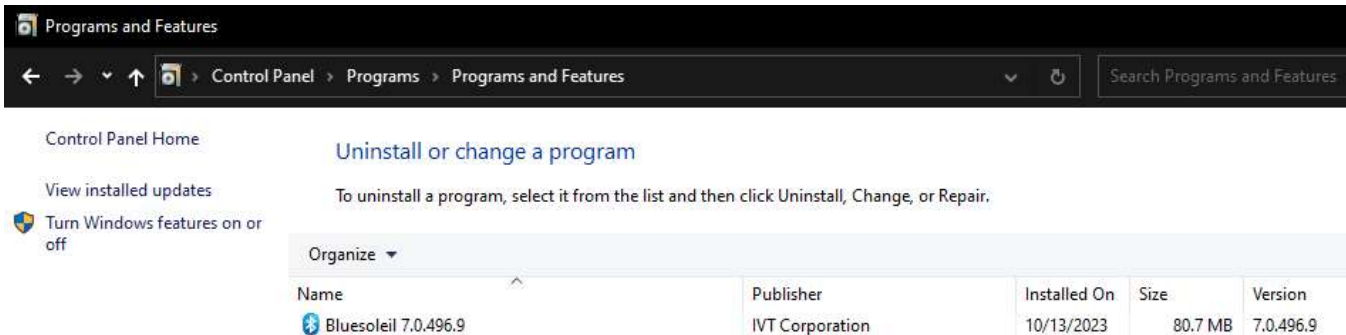
Via Stenograph Bluetooth Program

It is recommended to uninstall or remove *BlueSoleil* before installing the *Stenograph Bluetooth* program. To uninstall a program in Windows 10, you can use either the Settings app or the Control Panel. Here are the steps to follow:

Settings app: Select the **Start button** , then select **Settings**  > **Apps** > **Apps & features**. Locate the program called BlueSoleil, click it, and then click Uninstall.



Control Panel: In the search box on the taskbar, type Control Panel and select it from the results. Click **Programs** > **Programs and Features**. Locate the BlueSoleil program, right-click it, and then click Uninstall.

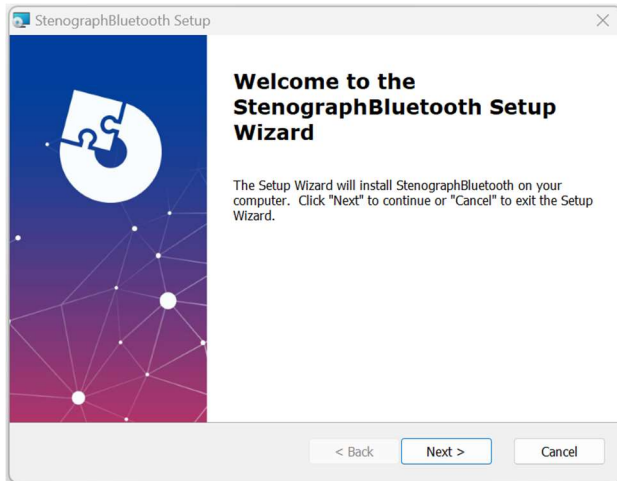


Note: Detach or remove the StarTech Bluetooth adapter.

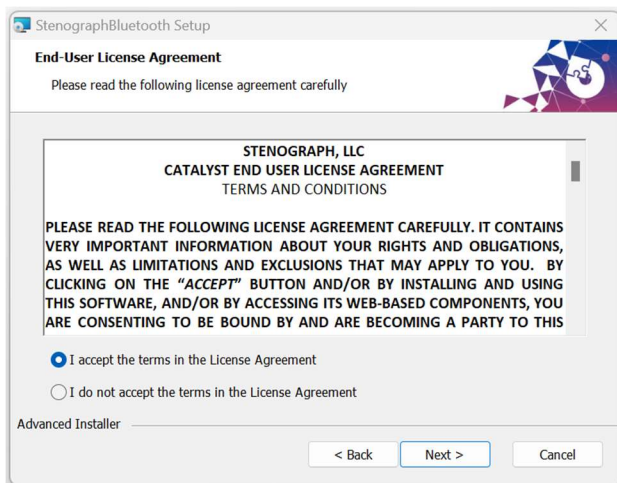


* LUM must be running **Build #23666** *

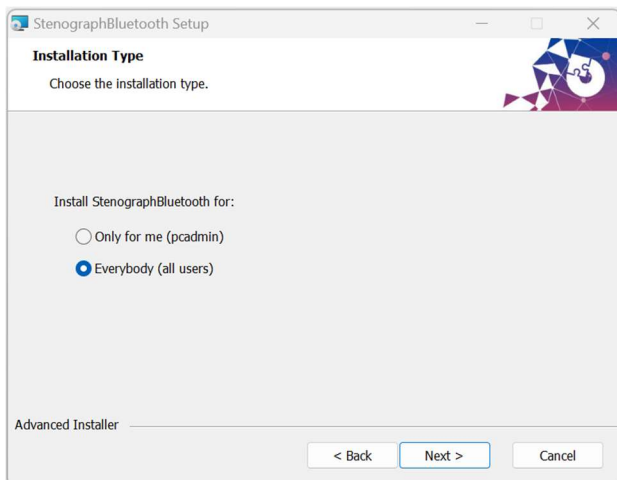
1. Unzip the StenographBluetooth.zip and then install Stenograph Bluetooth software by double clicking **StenographBluetooth.exe** file. Click **Next**.



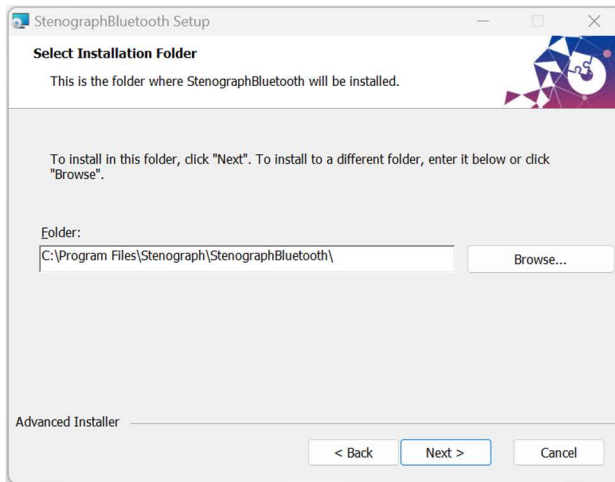
2. Accept the License Agreement and click **Next**.



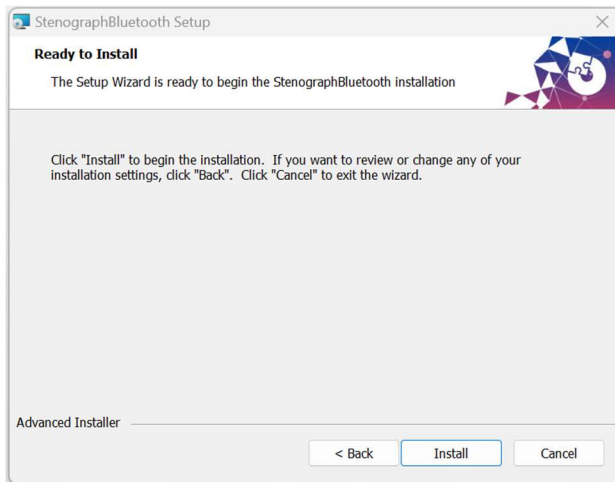
3. Select **Only for me** or **Everybody**.



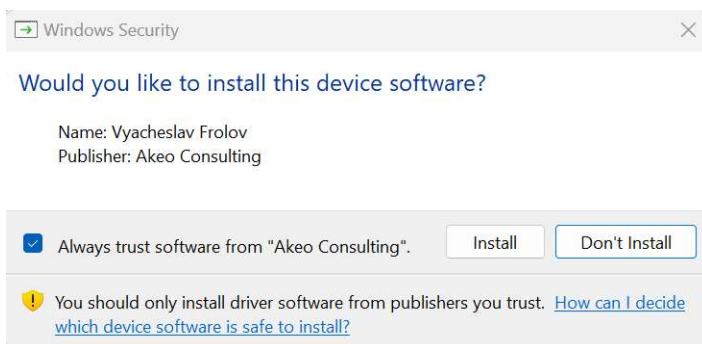
4. Keep the default installation path and click **Next**.



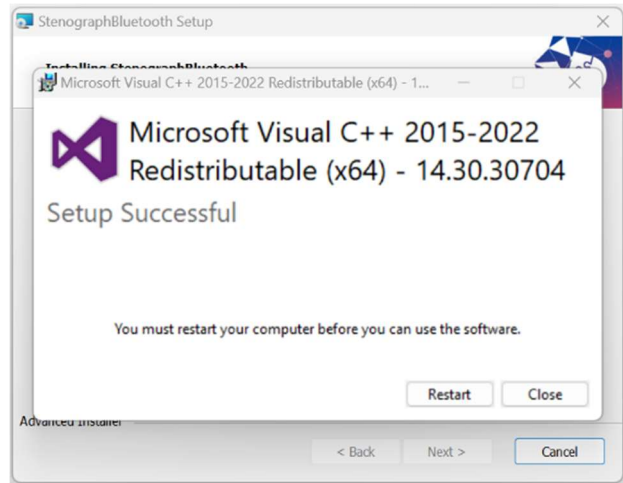
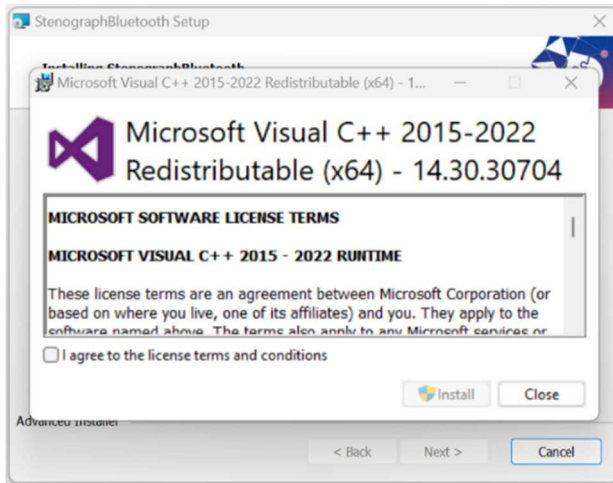
5. Click **Install**.



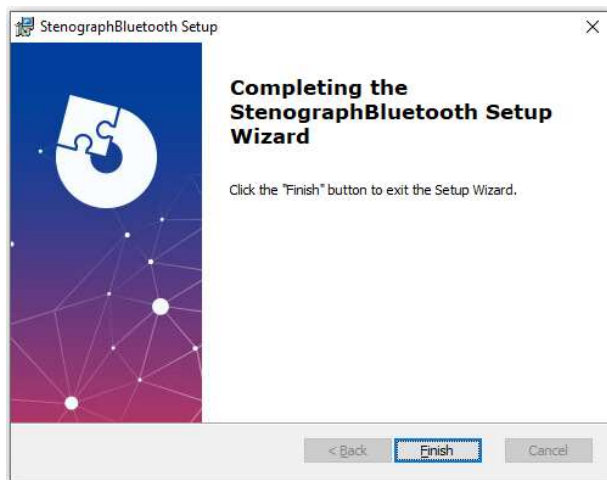
Note: You may be prompted to install a driver from Akeo Consulting. If you receive the prompt, click **Install** to install the driver software.



You may also be prompted to update the Microsoft Visual C++ 2015-2022 Redistributable (x64) - 14.30.30704. Check the box and click **Install**. A computer restart will be required. The installation will resume once the reboot has been completed.

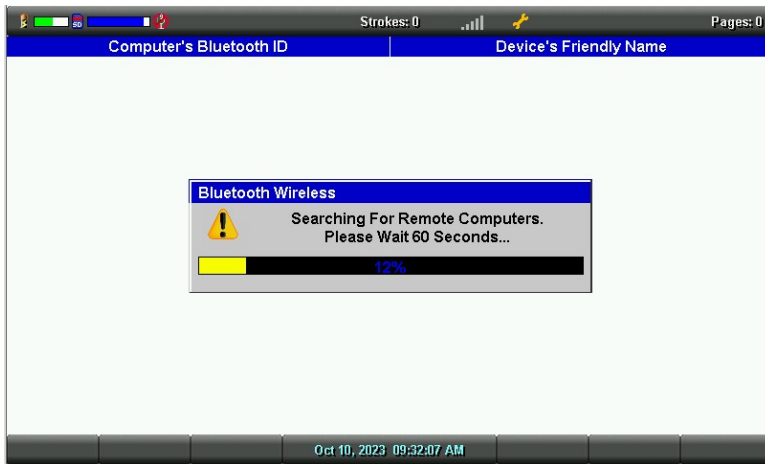


6. When the installation is complete, click **Finish**. *Stenograph Bluetooth* installation is now complete.



NOTE: On the Luminex machine, select **Setup**, **Wireless**, then **Bluetooth**. If the first button (F1) has the word *Configure*, proceed to Step #7. If not, proceed to Step #13.

7. From the Luminex main menu, choose **Setup, Wireless, Bluetooth**, then **Configure**.

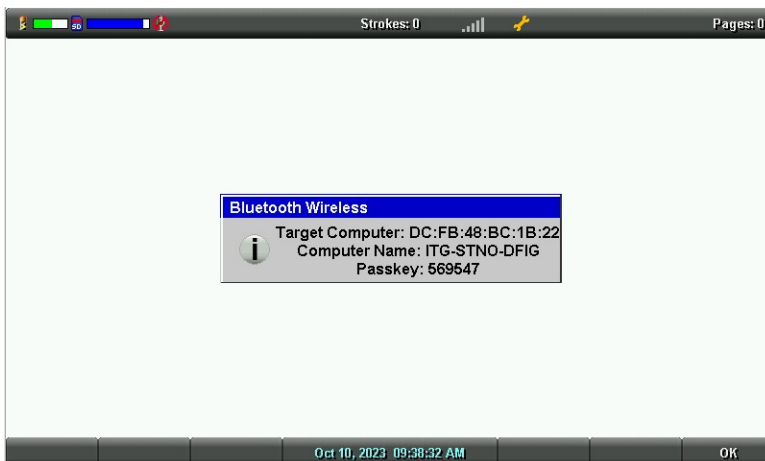


8. When the search is complete, use **Down/Up** buttons to *highlight your PC* (select the correct name), then choose the **Select** button.

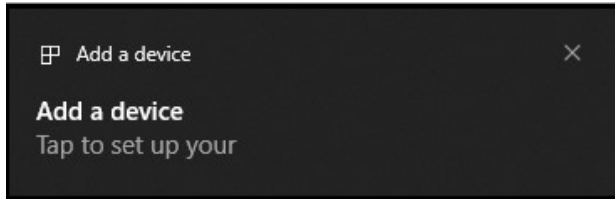
Note: To find out your computer name is to press **Windows key + Pause/break**. You can then look next to Computer name to confirm the name of the computer.



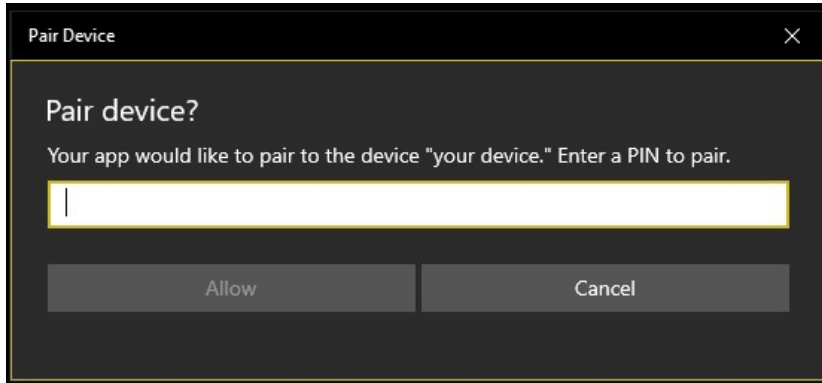
9. Make a note of the *Passkey* on the Luminex LCD. You will need to enter this passkey when prompted on the computer.



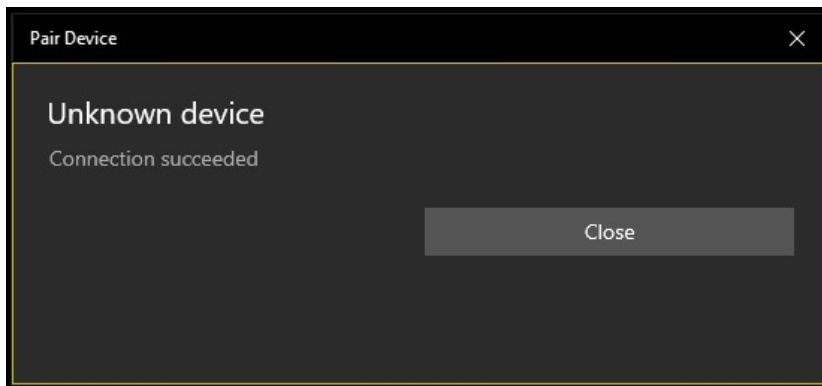
10. A dialog box will appear on the PC. Click to select **Add a device**.



11. Enter the **Passkey** shown on the Luminex LCD screen, then click **Allow**. If you do not type in the passkey after several seconds, a Timeout message will appear on the Luminex.



12. A Connection *succeeded* message will appear on your computer, click Close, then press OK on the Luminex.

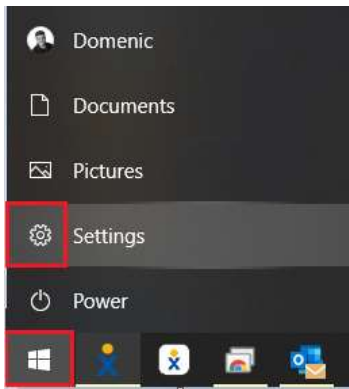


Note: Once paired, COM Port will always be COM #21.

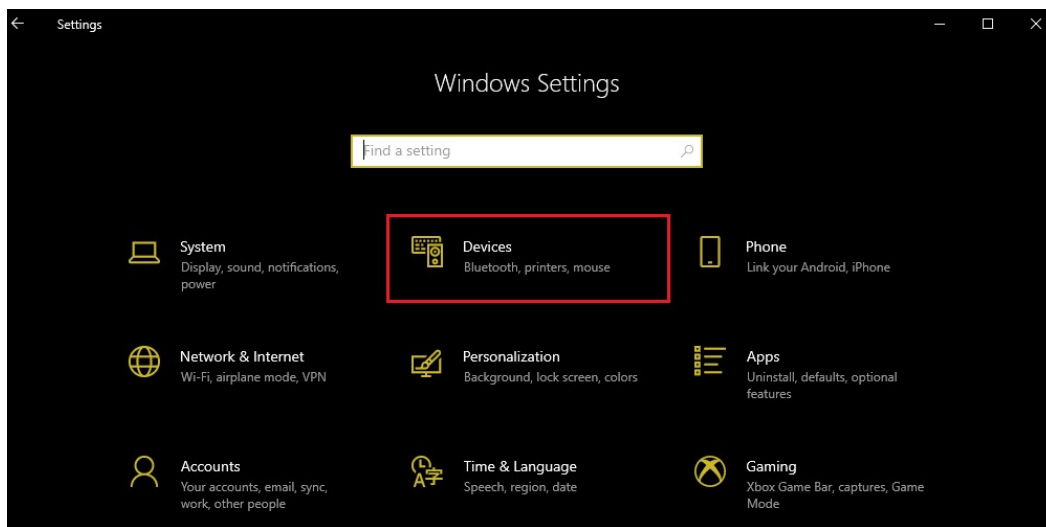
If the Writer does *not* have a **Configure** button.

Note: Luminex *must* be at the Bluetooth screen (*Setup, Wireless, Bluetooth*) before proceeding.

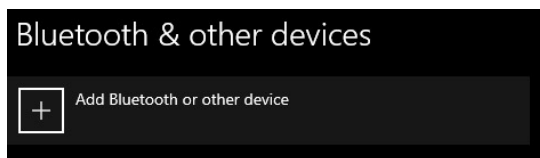
13. Click the **Start** button on the computer (lower left corner of the screen), then click **Settings**.



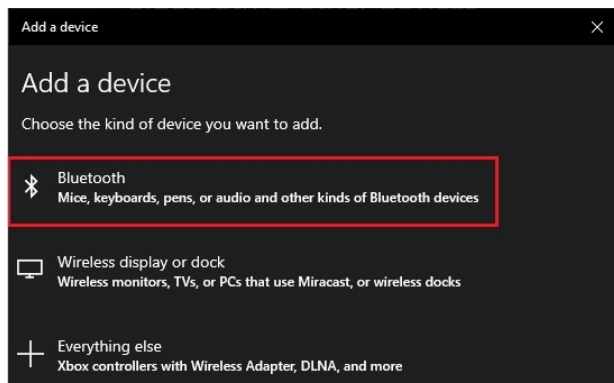
14. The *Windows Settings* window appears, click **Devices**.



15. At the top of the window, click **Add Bluetooth or other devices**.

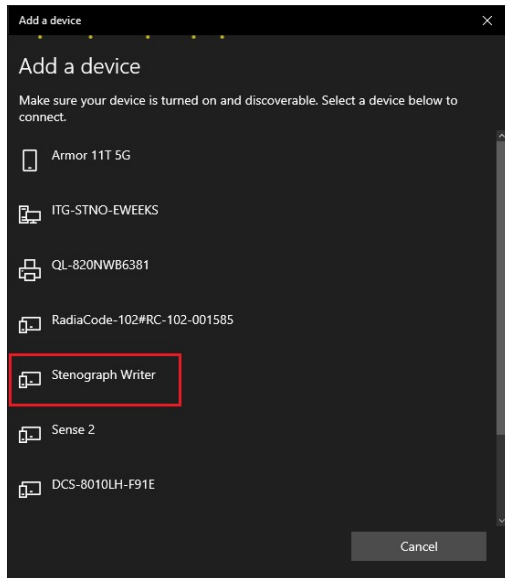


16. The *Add a device* window appears, click **Bluetooth**.

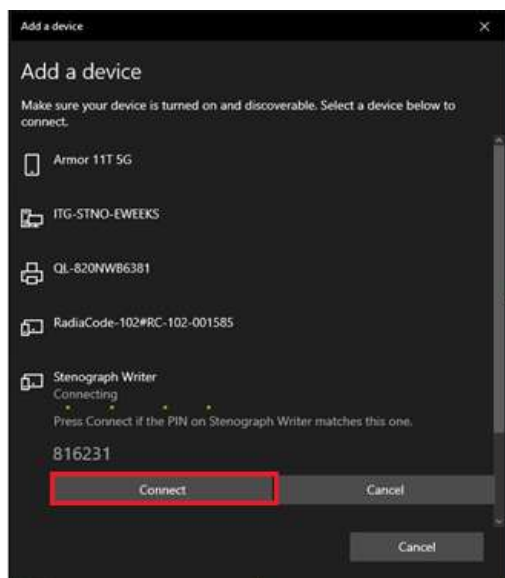
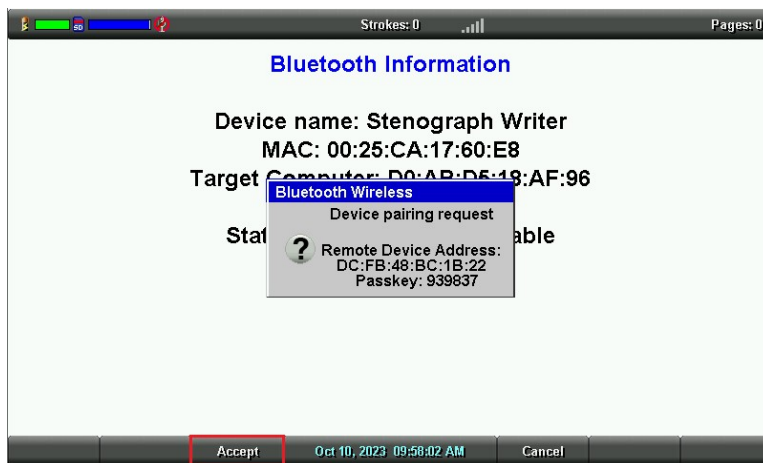


17. Click **Stenograph Writer**.

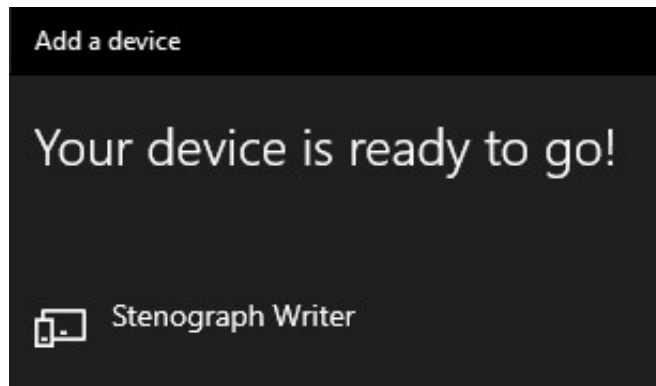
Note: It may take a moment or two before Stenograph Writer will appear in the list.



18. A *Passkey* will appear on the computer and Luminex, verify the passkey's match. Press **Accept** on the Luminex *first*, then click **Connect** on the computer.

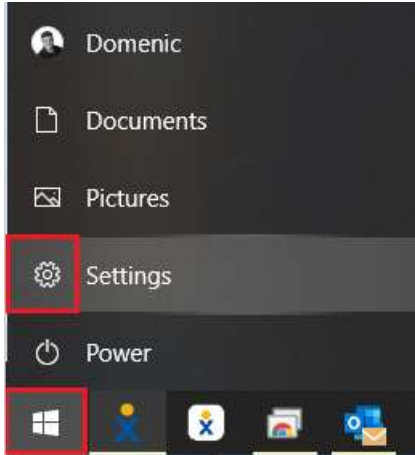


19. Congratulations!

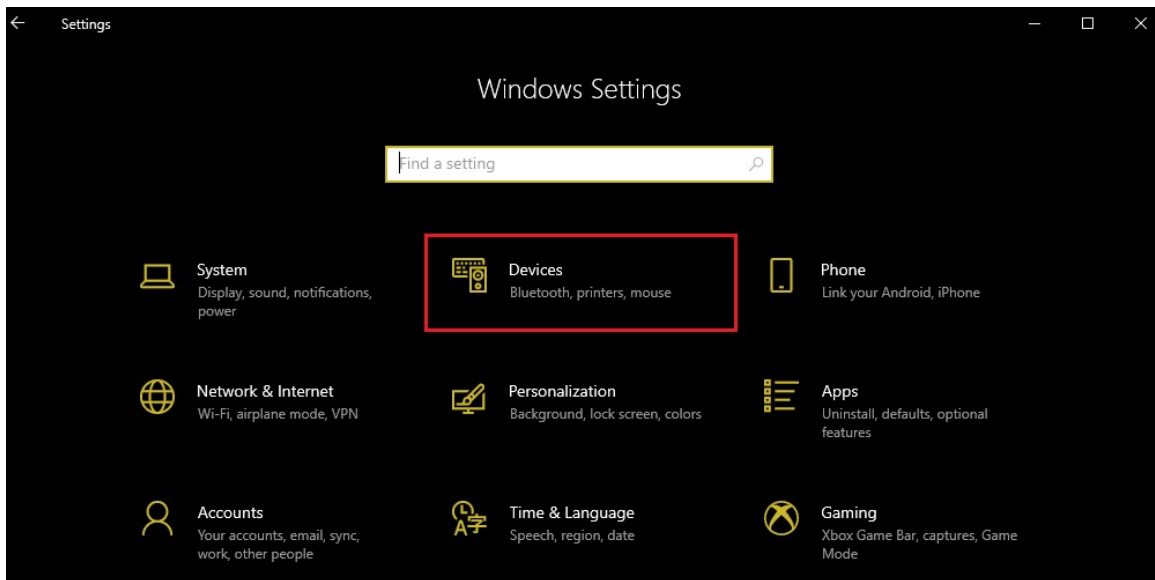


Luminex/Luminex II Successful Pairing Confirmation:

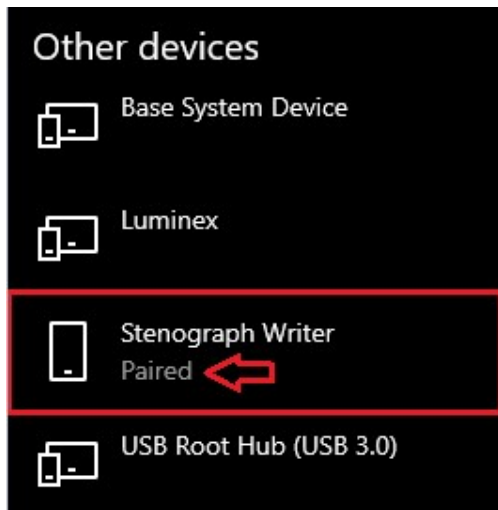
1. Click the **Start** button, then click **Settings**.



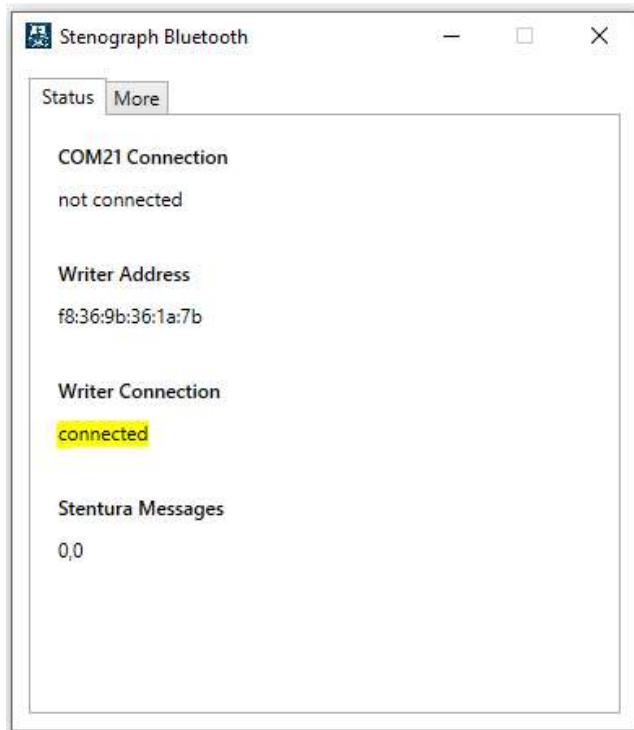
2. Click **Devices** at the *Windows Settings* window.



3. Under **Other Devices** you will now see a paired writer.



4. Click the **Bluetooth Proxy** icon on the Desktop. You will see that the writer is connected.



Luminex II Bluetooth FAQs

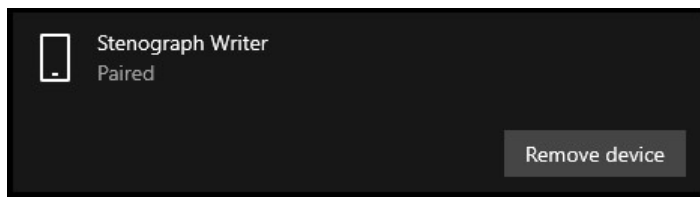
It is important to update the writer to the most recent version before proceeding with the installation and setup. Instructions on how to update the writer:

- 1) Connect the writer to the computer via the USB cable.
- 2) Go to www.stenopgraph.com **Downloads** section.
- 3) Updates for the Luminex and Luminex II writers are available as a single download. Simply click on the available Build number #23666.
- 4) Save the program to your desktop and run the program to update your writer.

Can I pair multiple writers to a single computer, or pair my writer to multiple computers?

No, only one machine can be paired to a computer at a time. To switch from one Luminex machine to another using the same PC, the following steps are required:

- Click **Start, Settings**, then **Devices** (see step #1, #2, and #3 on pg. #10).
- Left click the **Stenograph Writer** under **Other Devices**, then click **Remove device**.



- Turn off Bluetooth on the Luminex (**Setup, Wireless, Bluetooth, On/Off**)
- Now initiate setup on the new Luminex machine starting from step #7 or step #13 (turn Bluetooth back on first).

Can I pair my writer to another computer?

Yes, you can pair your writer to another computer, but it will be necessary to unpair the current connection to the current computer first.

Do I need to disconnect other devices connected to my computer while setting up the Bluetooth?

During the setup process, we recommend you disconnect other devices like a docking station or USB Hub. Once your writer finds and pairs with your computer and you can write in realtime to your software, you can plug all the other devices back in and use them as you would normally. They only need to be disconnected during the initial setup process.

Do I have to download a new software build to my Luminex?

Yes, it is necessary to update your Luminex to build #23666 or Stenograph Bluetooth will not work.

Can I update my writer to the new build via Wi-Fi or Bluetooth?

No, you must use the USB cable.

Can I use a different COM number for my realtime connection?

No, the COM number will always be COM21.

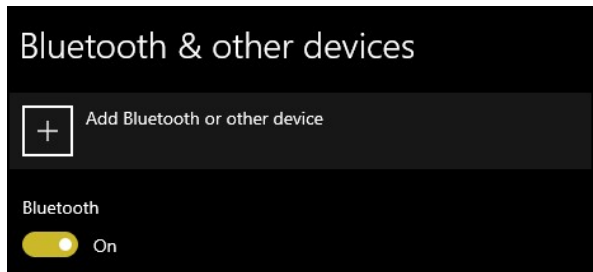
How can I tell if my writer is paired with my computer?

When successfully paired, the Stenograph Bluetooth icon in the System tray will no longer have a red dot.



Do I need to uninstall BlueSoleil before installing Stenograph Bluetooth?

We recommend uninstalling BlueSoleil and enabling the computer's internal Bluetooth prior to installing Stenograph Bluetooth.



Troubleshooting Tips:

- Restart computer after you install Stenograph Bluetooth.
- Turn writer off and then and back on again after you install update.
- Close Stenograph Bluetooth app and restart it.
- Stenograph Bluetooth needs to be active in your System tray. If it's not there, double-click the shortcut on the Desktop to open the program.



- In Case CATalyst, go into your Translate Options, then Realtime Tab, and change your input to Stenograph Serial/Bluetooth. The COM# should be set to COM21 under Connection.